

MAP OF SURVEY

LOCATED in Section 22, T. 26 S., R. 2 W., W.M. in Douglas County, Oregon.

February 2, 2004

FILED
Date: 2/6/2004 By: J.P.
This survey consists of:
Map: M 143-66
Narrative: _____
Corner Rpt: _____

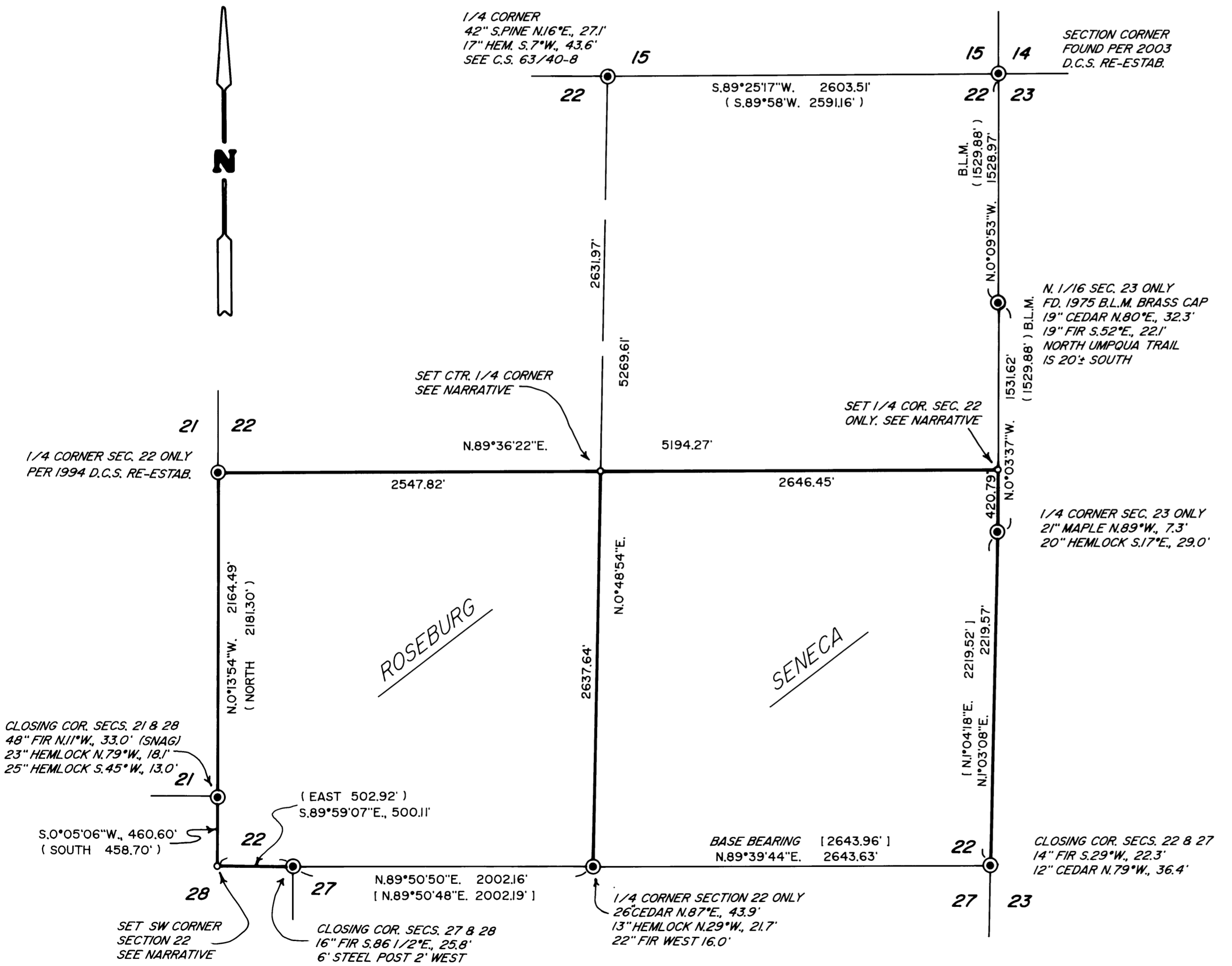
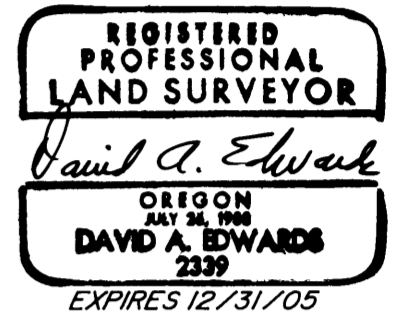
DOUGLAS COUNTY
SURVEYOR

SURVEYED FOR: ROSEBURG RESOURCES
P.O. BOX 1088
ROSEBURG, OREGON

AND

SENECA JONES TIMBER CO.
P.O. BOX 2129
ROSEBURG, OREGON

SURVEYED BY: DAVID EDWARDS LAND SURVEYING
P.O. BOX 361
OAKLAND, OREGON 97462
PHONE: (541) 459-0512



LEGEND

- ⊙ INDICATES BRASS CAP FOUND PER 1918 G.L.O. RESURVEY UNLESS OTHERWISE NOTED.
- INDICATES 5/8" X 36" STEEL REBAR WITH 2 1/2" DIAM. ALUMINUM CAP SET. (SEE NARRATIVE)
- () DENOTES 1918 G.L.O. RECORD DATA EXCEPT WHERE NOTED.
- [] DENOTES RECORD DATA PER M 94-80. G.L.O. = GENERAL LAND OFFICE.
- INDICATES BOUNDARY POSTED, BLAZED & FLAGGED THIS SURVEY.

SCALE: 1" = 600'

D.C.S. = DOUGLAS COUNTY SURVEYOR.

BASIS OF BEARINGS: M 94-80 AS SHOWN.

NARRATIVE

THE PURPOSE OF THIS SURVEY IS TO BLAZE, POST AND FLAG THE BOUNDARY LINES SHOWN AS BOLD HEREON AND TO MONUMENT THE EAST 1/4 CORNER, THE CENTER 1/4 CORNER AND THE SOUTHWEST CORNER OF SECTION 22. CONTROL TRAVERSES WERE MADE WHICH TIED IN THE NECESSARY CONTROLLING MONUMENTS AND THE SUBDIVISION OF SECTION 22 WAS COMPUTED. AFTER DISCUSSING THE SITUATION WITH LOCAL B.L.M. SURVEYORS I SET THE MISSING EAST 1/4 CORNER AT A LATITUDINAL MID-POINT BETWEEN THE NORTHEAST AND SOUTHEAST CORNERS OF SECTION 22, ON LINE BETWEEN THE NORTH 1/16 CORNER AND THE WEST 1/4 CORNER FOR SECTION 23 ONLY, AS SHOWN HEREON.

FROM SAID SET 1/4 CORNER: A 27" DIAM. CEDAR BEARS S.60°W., 14.0 FEET. BOTH SCRIBED "1/4 S22 BT" A 15" DIAM. FIR BEARS N.56°W., 60.2 FEET. SIX FOOT STEEL POSTS BEAR SOUTH 2 FEET AND WEST 2 FEET.

SEVERAL OPTIONS FOR POSITIONAL RESOLUTION OF THE MISSING SW CORNER OF SECTION 22 WERE ANALYZED. CONSIDERING THAT THE NEAREST EXISTING CORNERS ARE CLOSING CORNERS A BEARING EXTENSION INTERSECTION WAS REJECTED. COMPARISON OF MY RETURNED DISTANCES RELATIVE TO THE 1918 G.L.O. RESURVEY SHOWS INCONSISTENT DISHARMONY. THEREFORE A DISTANCE-DISTANCE INTERSECTION WAS ALSO REJECTED. A BROKEN BOUNDARY ADJUSTMENT USING THE TWO NEAREST MONUMENTED CORNERS WAS ULTIMATELY UTILIZED TO PLACE THE MISSING CORNER.

FROM SAID SET SW CORNER: A 6" DIAM. CEDAR BEARS S.50°E., 14.2 FEET. AN 11" DIAM. FIR BEARS N.29°W., 22.9 FEET. BOTH SCRIBED "S22 BT". NOTE: NO TREES AVAILABLE IN SECTION 22 DUE TO SLIDE. SIX FOOT STEEL POSTS BEAR NORTH 2 FEET AND EAST 2 FEET.

FROM THE SET CENTER 1/4 CORNER: A 27" DIAM. CEDAR BEARS N.41°E., 9.8 FEET. A 12" DIAM. FIR BEARS S.59°E., 19.45 FEET. AN 8" DIAM. FIR BEARS S.66°W., 16.35 FEET. A 7" DIAM. FIR BEARS N.53°W., 25.0 FEET. ALL SCRIBED "C 1/4 S22 BT"

ALL SET CAPS ARE STAMPED ACCORDING TO THE 1973 MANUAL AND ALSO WITH "LS 2339" AND "2004".

BEARING TREES ARE MEASURED TO CENTER OF TREE AT ROOT CROWN.

THE MARKED BOUNDARIES HAVE TREES BLAZED ON EACH SIDE OF LINE, SIX FOOT STEEL POSTS SET ALONG THE LINE AT INTERVALS OF 200 FEET OR LESS AND RED FLAGGING HUNG LIBERALLY ALONG THE BOUNDARY.

FIELD CREW: DAVID EDWARDS AND BRANT MILLER.

EQUIPMENT: NIKON TOTAL STATION.

COMPS. AND DRAFTING: DAVID EDWARDS.