

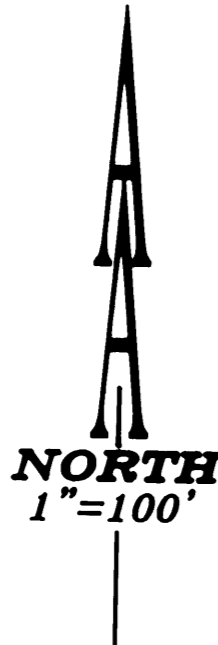
BOUNDARY LINE ADJUSTMENT

for ALICE EMERY JENKINS
 LOT 57 & 58, SUNSHINE ACRES SUBDIVISION (UNSURVEYED)
 LOCATED IN THE NE1/4 OF SEC. 15, T.27S., R.5W., W.M.
 DOUGLAS COUNTY, OREGON
 SEPTEMBER 2003

FILED
 Date: 1-13-2004 By: JC
 This survey consists of:
 Map: M143-59
 Narrative:
 Corner Rpt:

DOUGLAS COUNTY
 SURVEYOR

MAP FILE M143-59



RECORD:
 () RM 1-66

LEGEND:
 ● Set 5/8" x 30" Iron Rod with Yellow Plastic Cap marked "AA SURVEYING INC."
 ○ Found 5/8" Iron Rod
 △ Calculated Point

NUMBER	DIRECTION	DISTANCE
L1	S26°32'54"E	116.59'
L2	S46°17'37"E	152.11'

NUMBER	DELTA ANGLE	RADIUS	ARC LENGTH	CHORD DIRECTION	CHORD LENGTH
C1	16°31'51"	334.00' (334.00')C	99.25' (99.44')C	N00°08'55"W (N00°03'09"E)C	98.91' (99.09')
C2	02°52'58"	604.00' (604.00')C	30.39' (30.45')C	N09°33'29"E (N09°46'40"E)C	30.39' (30.45')
C3	15°21'29"	604.00' (604.00')C	161.90' (163.17')C	N18°54'24"E (N18°57'40"E)C	161.42' (162.67')

C=Calculated

APPROVALS:

Keith L. Cubic 1/13/04
 Douglas County Planning Director Date
 Douglas County Planning Department File Number 03-M096

NARRATIVE:

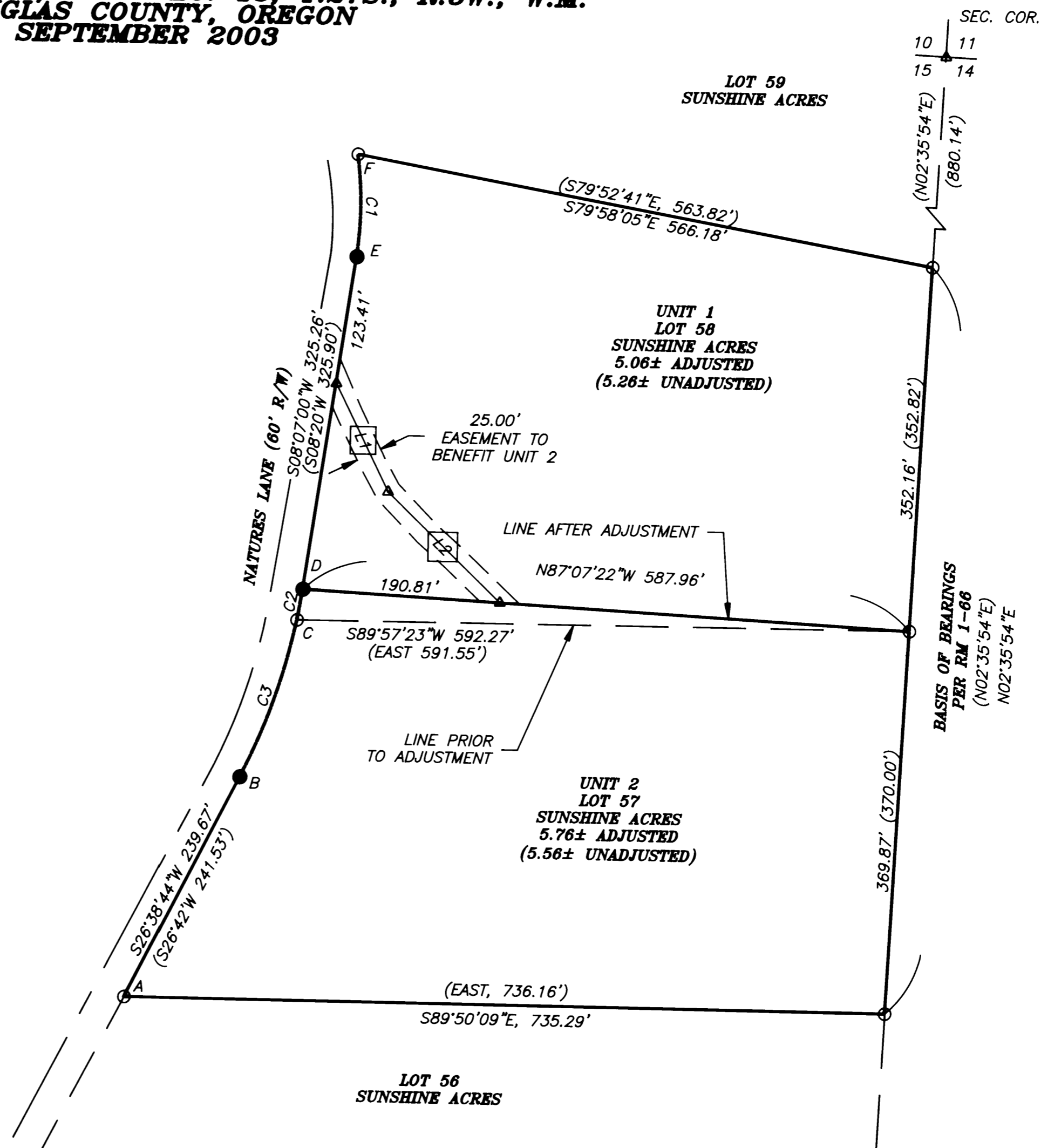
The purpose of this survey is to monument the adjusted boundary of the property shown.

The position of all found monuments were held.

Monument "B" was proportionally set based on calculated record distance between found monuments "A" and "C" versus measured distance. Calculated record distance between "A" and "C" is 403.31'. Measured distance between "A" and "C" is 400.21'. The calculated scale factor used was 0.9923.

Monument "D" and "E" were proportionally set based on calculated record distance between found monuments "C" and "F" versus measured distance. Calculated record distance between "C" and "F" is 454.60'. Measured distance between "C" and "F" is 453.72'. The calculated scale factor used was 0.9981.

The line was adjusted as shown.



REGISTERED
 PROFESSIONAL
 LAND SURVEYOR

Herman A. Pieske

OREGON
 JULY 14, 1978
 HERMAN A. PIESKE
 1851
 EXP. DATE: 12-31-04

AA
SURVEYING & ENGINEERING, INC.
ENGINEERING • SURVEYING • PLANNING

3076 NE DIAMOND LAKE BLVD.
 ROSEBURG, OREGON 97470
 TEL (541)672-2096
 FAX (541)672-0611

MAP FILE M143-59