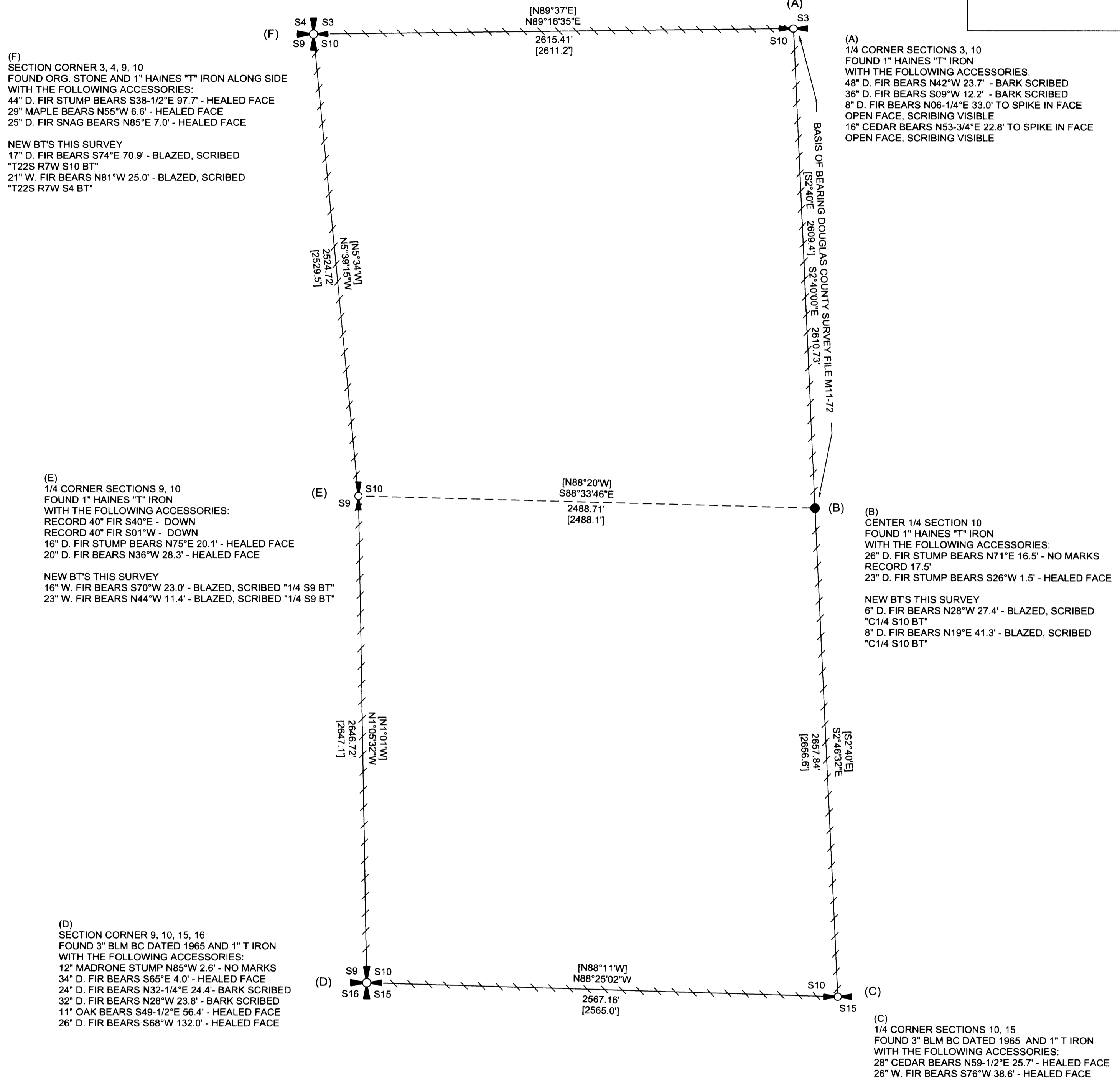


RECORD OF SURVEY  
 FOR: SENECA JONES TIMBER COMPANY  
 NW1/4, SW1/4, SECTION 10, T22S, R7W, W.M.  
 DOUGLAS COUNTY, OREGON  
 15, DECEMBER 2003



FILED  
 Date: 1-12-2004 By: JC  
 This survey consists of:  
 Map: M143-57  
 Narrative: \_\_\_\_\_  
 Corner Rpt: \_\_\_\_\_  
 DOUGLAS COUNTY  
 SURVEYOR



(F)  
 SECTION CORNER 3, 4, 9, 10  
 FOUND ORG. STONE AND 1" HAINES "T" IRON ALONG SIDE WITH THE FOLLOWING ACCESSORIES:  
 44" D. FIR STUMP BEARS S38-1/2"E 97.7' - HEALED FACE  
 29" MAPLE BEARS N55°W 6.6' - HEALED FACE  
 25" D. FIR SNAG BEARS N85°E 7.0' - HEALED FACE  
 NEW BT'S THIS SURVEY  
 17" D. FIR BEARS S74°E 70.9' - BLAZED, SCRIBED "T22S R7W S10 BT"  
 21" W. FIR BEARS N81°W 25.0' - BLAZED, SCRIBED "T22S R7W S4 BT"

(E)  
 1/4 CORNER SECTIONS 9, 10  
 FOUND 1" HAINES "T" IRON WITH THE FOLLOWING ACCESSORIES:  
 RECORD 40" FIR S40°E - DOWN  
 RECORD 40" FIR S01°W - DOWN  
 16" D. FIR STUMP BEARS N75°E 20.1' - HEALED FACE  
 20" D. FIR BEARS N36°W 28.3' - HEALED FACE  
 NEW BT'S THIS SURVEY  
 16" W. FIR BEARS S70°W 23.0' - BLAZED, SCRIBED "1/4 S9 BT"  
 23" W. FIR BEARS N44°W 11.4' - BLAZED, SCRIBED "1/4 S9 BT"

(D)  
 SECTION CORNER 9, 10, 15, 16  
 FOUND 3" BLM BC DATED 1965 AND 1" T IRON WITH THE FOLLOWING ACCESSORIES:  
 12" MADRONE STUMP N85°W 2.6' - NO MARKS  
 34" D. FIR BEARS S65°E 4.0' - HEALED FACE  
 24" D. FIR BEARS N32-1/4"E 24.4' - BARK SCRIBED  
 32" D. FIR BEARS N28°W 23.8' - BARK SCRIBED  
 11" OAK BEARS S49-1/2"E 56.4' - HEALED FACE  
 26" D. FIR BEARS S68°W 132.0' - HEALED FACE

(A)  
 1/4 CORNER SECTIONS 3, 10  
 FOUND 1" HAINES "T" IRON WITH THE FOLLOWING ACCESSORIES:  
 48" D. FIR BEARS N42°W 23.7' - BARK SCRIBED  
 36" D. FIR BEARS S09°W 12.2' - BARK SCRIBED  
 8" D. FIR BEARS N06-1/4"E 33.0' TO SPIKE IN FACE OPEN FACE, SCRIBING VISIBLE  
 16" CEDAR BEARS N53-3/4"E 22.8' TO SPIKE IN FACE OPEN FACE, SCRIBING VISIBLE

(B)  
 CENTER 1/4 SECTION 10  
 FOUND 1" HAINES "T" IRON WITH THE FOLLOWING ACCESSORIES:  
 26" D. FIR STUMP BEARS N71°E 16.5' - NO MARKS  
 RECORD 17.5'  
 23" D. FIR STUMP BEARS S26°W 1.5' - HEALED FACE  
 NEW BT'S THIS SURVEY  
 6" D. FIR BEARS N28°W 27.4' - BLAZED, SCRIBED "C1/4 S10 BT"  
 8" D. FIR BEARS N19°E 41.3' - BLAZED, SCRIBED "C1/4 S10 BT"

(C)  
 1/4 CORNER SECTIONS 10, 15  
 FOUND 3" BLM BC DATED 1965 AND 1" T IRON WITH THE FOLLOWING ACCESSORIES:  
 28" CEDAR BEARS N59-1/2"E 25.7' - HEALED FACE  
 26" W. FIR BEARS S76°W 38.6' - HEALED FACE

NARRATIVE:  
 THE PURPOSE OF THIS SURVEY WAS TO RETRACE A PORTION OF THE SURVEY OF SECTION 20, TOWNSHIP 22 SOUTH, RANGE 7 WEST, WILLAMETTE MERIDIAN AS PERFORMED BY WILFORD HAINES IN 1960 AND RECORDED AS DOUGLAS COUNTY SURVEY FILE M11-72. ALSO TO POST THE RETRACED LINES WITH 5-1/2" GALVANIZED STEEL POSTS, RED PAINTED BLAZES AND RED FLAGGING.

ALL CORNERS SHOWN ON THIS PLAT WERE TIED IN A CLOSED LOOP TRAVERSE AND HELD IN THEIR AS-TIED POSITION FOR POSTING.

ALL CORNERS SHOWN ON THIS PLAT HAVE A 5-1/2" GALVANIZED STEEL POST ADJACENT TO THE CORNER MONUMENT. CORNER ACCESSORIES HAVE RED PAINTED BAND AND FACE PLUS YELLOW BEARING TREE TAG WHERE APPROPRIATE.

THE BASIS OF BEARING FOR THIS SURVEY WAS THE M11-72 RECORD BETWEEN THE N1/4 CORNER AND C1/4 CORNER OF SECTION 10.

THIS SURVEY WAS PERFORMED USING A NIKON TOTAL STATION.



**Ward NorthWest, Inc.**  
 P.O. BOX 105 FLORENCE, OR 97439  
 (541) 997-9201 FAX: 541-997-3546

LEGEND

	CENTER 1/4 CORNER AS NOTED
	1/4 CORNER AS NOTED
	SECTION CORNER AS NOTED
	POSTED LINE AS NOTED IN NARRATIVE
[ ]	RECORD DATA M11-72

REGISTERED PROFESSIONAL LAND SURVEYOR  
*Ronald L. Rice*  
 OREGON  
 JULY 9, 2002  
 RONALD L. RICE  
 54633LS  
 EXPIRES: 12-31-2004

FILE NAME		
03-95.TRV	DATE	DRAWN BY
SCALE	12-15-03	RLR
400 Ft/in	REVISION	SHEET
JOB	-----	1/1
03-95		

This map drawn with TRAVERSE PC Software