

LONE ROCK TIMBER CO.

PO BOX 1127 ROSEBURG, OREGON 97470
SECTION 6, TOWNSHIP 26 SOUTH, RANGE 7 WEST, W.M.

BLIXSETH - GARRISON: SURVEY
DOUGLAS COUNTY, OREGON

DATE: AUGUST 2003
SCALE: 1" = 500'

FILED

Date: 9/11/2003 By: JP
This survey consists of:
Map: M 143 - 4
Narrative: _____
Corner Rpt: _____

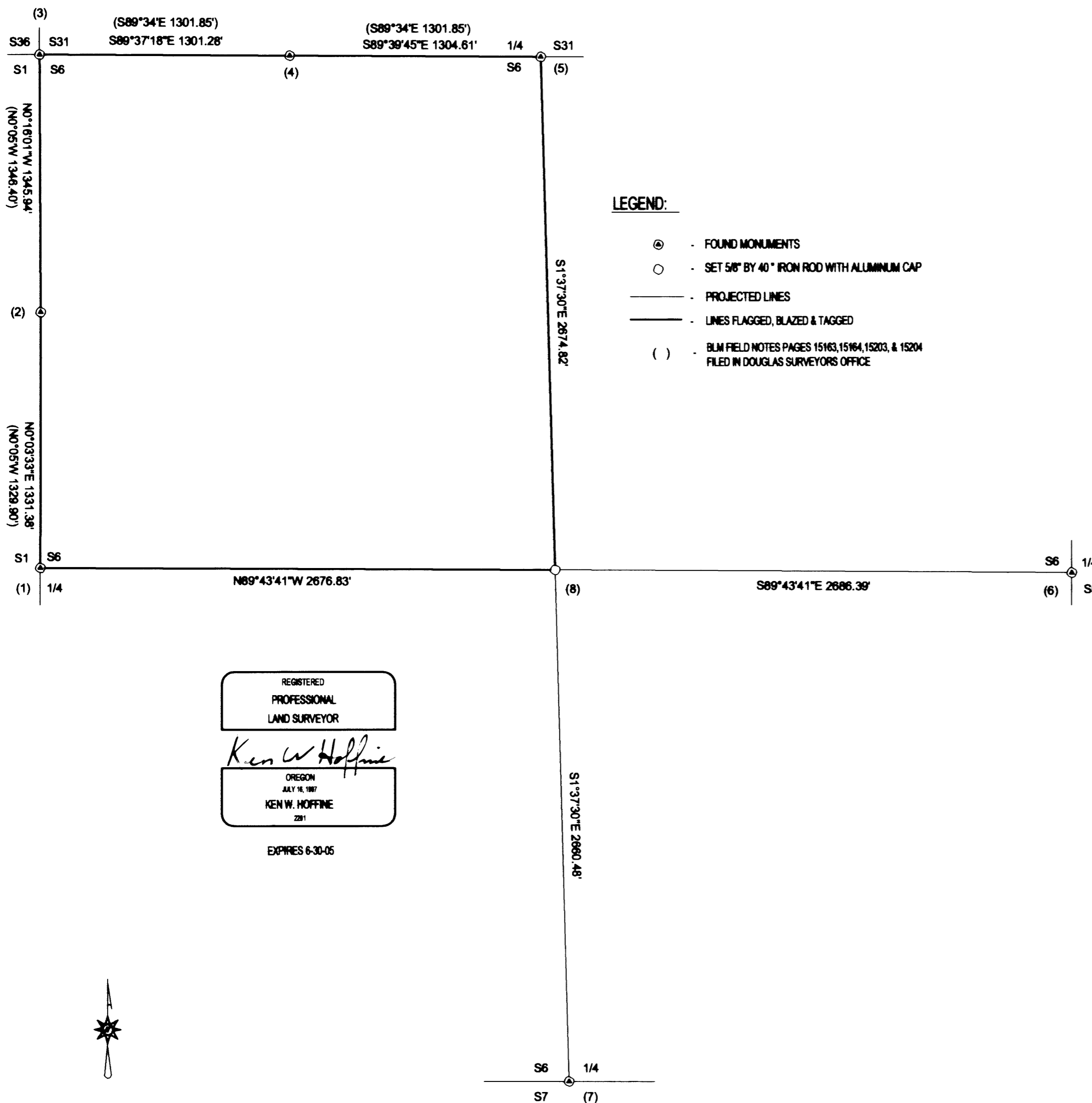
DOUGLAS COUNTY
SURVEYOR

NARRATIVE:

THIS SURVEY WAS CONDUCTED TO ESTABLISH PROPERTY CORNERS AND PROPERTY LINES FOR TIMBER CUTTING PURPOSES. WE INITIATED THIS SURVEY AT THE NORTH 1/4 OF SECTION 6 A BLM BRASS CAP SET BY PROPORTION IN 1971. ALL BLM CORNERS FOUND IN THIS SURVEY (AS SHOWN ON THIS PLAT) AND USED FOR CONTROL WERE SET BY PROPORTION IN THIS 1971 BLM SURVEY. WE BEGAN A RANDOM CLOSED TRAVERSE AROUND THE APPROXIMATE BOUNDARY OF THE NW 1/4 OF SECTION 6. WE THEN RAN TWO LEGS OF RANDOM OPEN TRAVERSE TO THE SOUTH 1/4 AND THE EAST 1/4 OF SECTION 6. USING GPS WE CHECKED OUR CLOSURE FROM GPS CONTROL POINTS NEAR THE NORTH 1/16, NORTH 1/4, CENTER 1/4, SOUTH 1/4 AND ON THE EAST 1/4. WE COMPUTED AND SET THE CENTER 1/4 CORNERS. WE THEN RIBBONED, BLAZED, PAINTED AND TAGGED THE PROPERTY LINES AS SHOWN. THIS SURVEY WAS DONE WITH A NIKON DTM 450 TOTAL STATION WITH TRIMBLE 4000SSE, 4000SE, 4400 AND PRO XL GPS RECEIVERS. I WAS ASSISTED ON THIS SURVEY BY GARY ANGOLIET, IGNACIO ROMAN, PAT CARTER AND MARK DVORSACK.

CORNER INFORMATION:

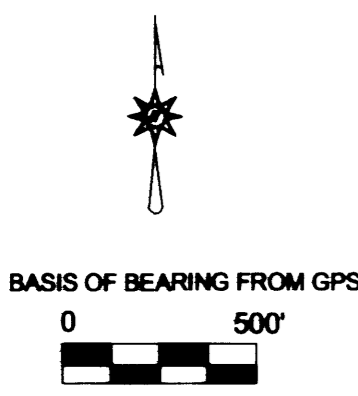
- THE FOLLOWING IS A RECORD OF ALL CORNERS FOUND OR SET DURING THE COURSE OF THIS SURVEY.
- 1) THE 1/4 CORNER BETWEEN SECTION 1, TOWNSHIP 26 SOUTH, RANGE 8 WEST AND SECTION 6, TOWNSHIP 26 SOUTH, RANGE 7 WEST
FOUND 1971 BLM BRASS CAP
- 28" DOUGLAS FIR BEARS S41° E, 16.5 FEET (RECORD S42°E, 17.16 FEET) HEALED FACE AND TAG
- 17" DOUGLAS FIR 6 FOOT TALL STUMP BEARS N42 1/2° E, 17.9 FEET (RECORD N43°E 17.82 FEET) HEALED FACE AND TAG
- 34" DOUGLAS FIR BEARS N69° W, 70.0 FEET AS PER RECORD HEALED FACE AND TAG
CORNER LIES ON NORTHWEST SLOPE 0.5 FEET ABOVE GROUND.
 - 2) THE NORTH 1/16 CORNER BETWEEN SECTIONS 1 AND 6
FOUND 1971 BLM BRASS CAP.
- 24" DOUGLAS FIR STUMP BEARS N70 1/4° E, 23.5 FEET (RECORD N71°E 23.76 FEET) HEALED FACE AND TAG
- 15" WHITE FIR BEARS N12° W, 19.0 FEET (NO RECORD BLM TAG READS S12 1/4°E 29 LKS.) HEALED FACE
CORNER LIES ON WEST FACING SLOPE APPROXIMATELY 1.0 FEET ABOVE GROUND
 - 3) THE NORTHWEST SECTION CORNER OF SECTION 6
FOUND 1971 BLM BRASS CAP.
- 8" WHITE FIR BEARS S40 3/4° E, 14.8 FEET (RECORD S39°E, 14.5 FEET) VISIBLE SCRIBING AND TAG
- 9" DOUGLAS FIR BEARS N34 1/4° E, 18.2 FEET (RECORD N34 1/2°E, 18.0 FEET) VISIBLE SCRIBING AND TAG
- 19" DOUGLAS FIR BEARS N44° W, 14.9 FEET (RECORD N45°W, 15.18 FEET) HEALED FACE AND TAG
- 35" DOUGLAS FIR BEARS S13 3/4° W, 33.5 FEET (RECORD S14°W, 34.32 FEET) HEALED FACE AND TAG
CORNER LIES ON SOUTH EDGE OF SMALL RIDGE APPROXIMATELY 50 FEET NORTH OF AF DRAW
 - 4) THE WEST 1/16 CORNER FOR SECTION 31 ONLY
FOUND 1971 BLM BRASS CAP.
- 10" WHITE FIR BEARS N35° E, 7.7 FEET (RECORD N33° E, 7.92 FEET) HEALED FACE AND TAG
- 10" DOUGLAS FIR BEARS N29° W, 4.0 FEET (RECORD N32°W, 3.96 FEET) HEALED FACE AND TAG
CORNER LIES ON NORTH SLOPE IN SLUMP AREA.
 - 5) THE NORTH 1/4 CORNER OF SECTION 6
FOUND 1971 BLM BRASS CAP.
- 14" WHITE FIR BEARS S75° W, 118.2 FEET (RECORD S75°W, 80.3 FEET) HEALED FACE
- 20" DOUGLAS FIR BEARS S1° E, 80.2 FEET (RECORD S2°W, 118.6 FEET) HEALED FACE
- 19" HIGH DOUGLAS FIR STUMP BEARS S29 1/2° W, 16.1 FEET (RECORD S30°W, 16.2 FEET)
CORNER LIES ON NORTHWEST SLOPE APPROXIMATELY 50 FEET EAST OF OLD SKID ROAD
 - 6) THE EAST 1/4 CORNER OF SECTION 6
FOUND 1971 BLM BRASS CAP.
- 17" DOUGLAS FIR STUMP BEARS N5° E, 15.2 FEET (AS PER RECORD) HEALED FACE AND TAG
- 42" DOUGLAS FIR STUMP BEARS N39 1/4° W, 46.86 FEET (AS PER RECORD) HEALED FACE AND TAG
CORNER LIES ON NORTH FACING RIDGE TOP WITH METAL FENCE POST ALONGSIDE.
 - 7) THE SOUTH 1/4 CORNER OF SECTION 6
FOUND 1971 BLM BRASS CAP.
- 20" DOUGLAS FIR STUMP BEARS S45 1/4° E, 60.9 FEET (RECORD S45°E, 61.38 FEET) HEALED FACE AND TAG
- 22" DOUGLAS FIR STUMP BEARS N17 3/4° W, 26.3 FEET (RECORD N19°W, 26.4 FEET) HEALED FACE AND TAG
CORNER SITS ON SOUTH FACING SLOPE APPROXIMATELY 20 FEET SOUTH OF 5 FOOT TALL ROCK FACE.
 - 8) THE CENTER 1/4 CORNER OF SECTION 6
SET 5/8" X 40" IRON ROD WITH 2 1/2" ALUMINUM CAP MARKED LONE ROCK TIMBER T26S R7W S6 2003 PLS 2291.
- 31" DOUGLAS FIR BEARS N23° E, 21.2 FEET WE SCRIBE C1/4 S6 BT AND TAG TREE
- 11" DOUGLAS FIR BEARS S56 1/4° E, 18.6 FEET WE SCRIBE C1/4 S6 BT AND TAG TREE
- 11" DOUGLAS FIR BEARS S10 3/4° W, 17.5 FEET WE SCRIBE C1/4 S6 BT AND TAG TREE
- 10" WHITE FIR BEARS N62 3/4° W, 18.9 FEET WE SCRIBE C1/4 S6 BT AND TAG TREE
CORNER LIES ON WEST FACING 30% SLOPE APPROXIMATELY 450 FEET SOUTH OF ROAD JUNCTION



LEGEND:

- ⊙ - FOUND MONUMENTS
- - SET 5/8" BY 40" IRON ROD WITH ALUMINUM CAP
- - PROJECTED LINES
- - LINES FLAGGED, BLAZED & TAGGED
- () - BLM FIELD NOTES PAGES 15163, 15164, 15203, & 15204 FILED IN DOUGLAS SURVEYORS OFFICE

REGISTERED
PROFESSIONAL
LAND SURVEYOR
Ken W. Hoffine
OREGON
JULY 16, 1987
KEN W. HOFFINE
2281
EXPIRES 6-30-06



MAP FILE M 143 - 4

MAP FILE M 143 - 4