

FILED

Date: 11/19/2003 By: JP  
 This survey consists of:  
 Map: M143-29  
 Narrative:  
 Corner Rpt:

DOUGLAS COUNTY SURVEYOR

**SURVEY FOR**  
**FRERES LUMBER COMPANY & WILLAMETTE INDUSTRIES**  
**E 1/2 OF SECTION 14**  
**TOWNSHIP 21 SOUTH, RANGE 4 WEST, W.M..**  
**LANE COUNTY, OREGON**  
**AUGUST 20, 2000**

**NARRATIVE**

THE PURPOSE OF THIS SURVEY WAS TO MONUMENT THE PROPERTY LINES (BLAZED, PAINTED & POSTED) FOR FRERES LUMBER COMPANY & WILLAMETTE INDUSTRIES IN T21S, R4W, SECTION 14, W.M. CORNER MONUMENTS EXISTING IN THIS SECTION WERE HELD AS FOUND.

CORNERS SET IN THIS SURVEY WERE SET IN ACCORDANCE WITH THE BLM MANUAL OF SURVEYING INSTRUCTIONS 1973 & AS PER LCD&R DEED DESCRIPTION R 182L, PAGE 9304761, R 306, PAGE 161 AND R 1159, PAGE 81-41373. THERE ARE EXISTING FENCES LAYING SOUTH AND EAST OF OUR ESTABLISHED LINES AND CORNER SETS IN THE SE 1/4. THESE MAY CAUSE SOME POSSIBLE CONFLICT IN THE FUTURE. DEED CALLS HELD AS NOTED.

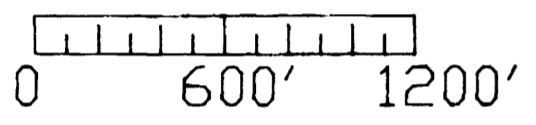
BASIS OF BEARING IS THE EAST 1/2 OF THE NORTH LINE OF THE SECTION 14 AS PER CS 18749 BASED UPON THE INVERSE BETWEEN #1 AND #3.

THIS SURVEY WAS PERFORMED USING A NIKON A20LG - TOTAL STATION TO MEASURE ANGLES AND DISTANCES. BEARING TREES REFERENCED ON THIS SURVEY WERE MEASURED WITH A 50" DIAMETER TAPE TO THE SIDE CENTER OF THE TREE AND HAND COMPASS TO THE CENTER.

- LEGEND**
- = SET 5/8" X 30" REBAR /W YPC 'LS 2603'
  - = CORNERS FOUND AS NOTED
  - ⊕ = CALCULATED POINT-NO MONUMENT FOUND OR SET
  - X = FENCE LINE (HTS)
- MEASUREMENTS OF RECORD AS NOTED
- < > = DEED
  - [ ] = GLO
  - [ ] = CSF #18749, EIMSTAD
  - [ ] = CS M110-72#, BAKER L.S.(DOUGLAS COUNTY)
  - << >> = 1982 BLM DEPENDENT RESURVEY

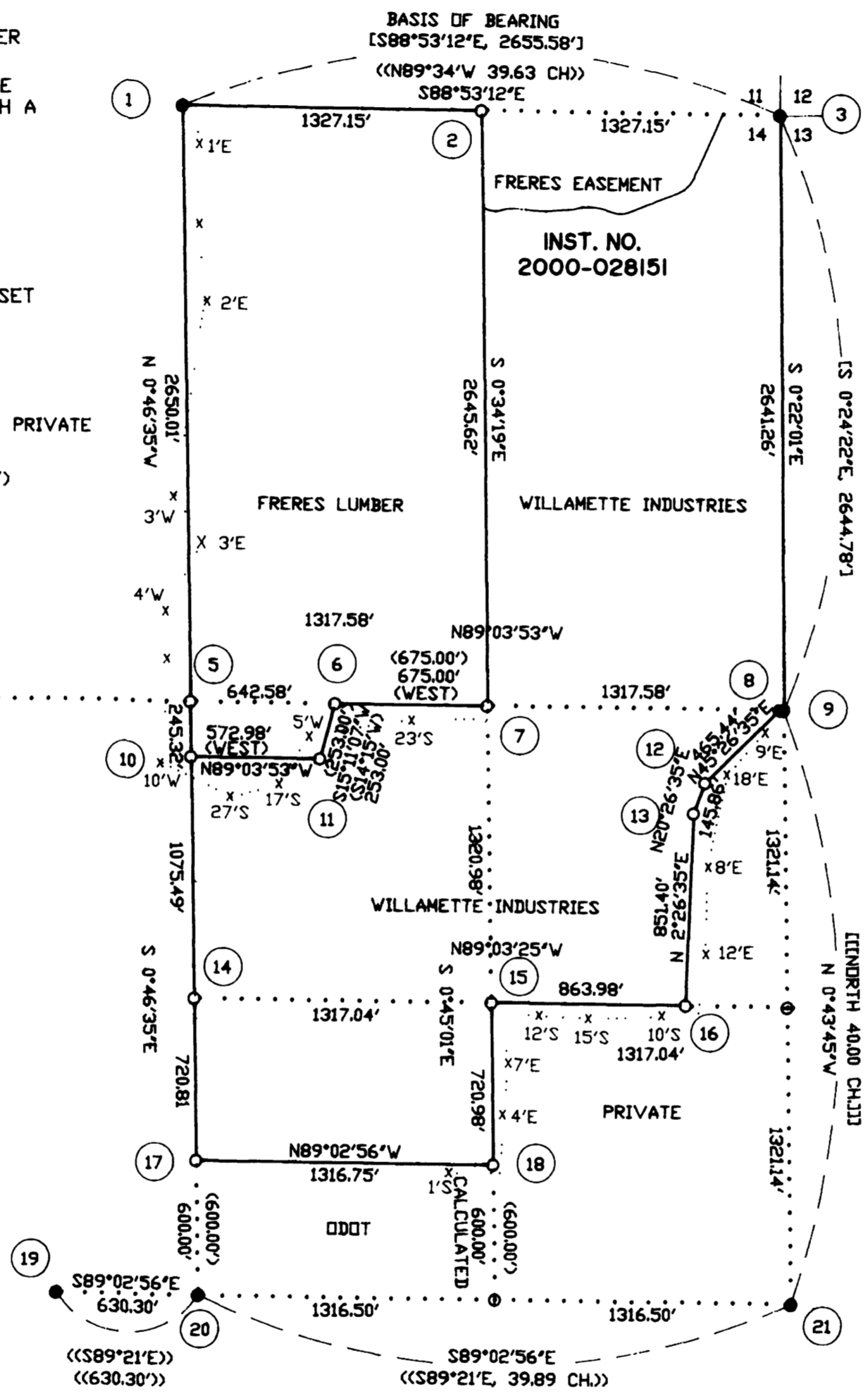


Scale: 1"=600 ft

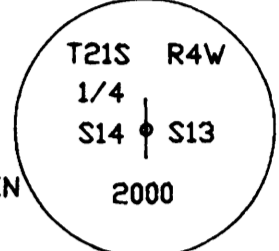


**CORNER NOTES**

- (1) 1/4 CORNER SECTIONS 11/14  
 FOUND: 5/8" REBAR, 0.3 FT ABOVE GRADE.  
 BT: 23' D. FIR S63°E, 13.8 FT. HEALED FACE  
 42' D. FIR STUMP S64°W, 43.0 FT. AXE WORK, ROTTEN  
 9' D. FIR N27.5°E, 29.3 FT. BLAZED & SCRIBED '1/4 S11 BT'  
 18' D. FIR N21°W, 18.5 FT. BLAZED & SCRIBED '1/4 S14 BT'  
 7' D. FIR S45°W, 51.5 FT. BLAZED & SCRIBED '1/4 S14 BT'  
 1/2" I. PIPE N66°E, 5.8 FT.
- (2) E1/16 CORNER SECTIONS 11/14  
 SET: 5/8" X 30" REBAR, 0.5 FT ABOVE GROUND W/ YPC '2603'  
 BT: 17' W. HEM N89°E, 14.4 FT. BLAZED & SCRIBED 'E1/16 S11 BT'  
 10' D. FIR N15°E, 10.2 FT. 'E1/16 S11 BT'
- (3) SECTION CORNER SECTION 11-12/14-13  
 FOUND: 5/8" REBAR, .3 FT ABOVE GROUND  
 BTS: 14' D. FIR S62°E, 31.1 FT. HEALED FACE  
 14' POPULAR S47°E, 130.4 FT. BARK SCRIBING VISIBLE  
 NO OTHER TREES AVAILABLE-CORNER NOT REPROPORTIONED.
- (4) 1/4 CORNER SECTIONS 15/14  
 FOUND: 2.0" BC, 0.5 FT ABOVE GRADE, PLS 752  
 BT: 18' R. ALDER N63.5°E, 22.8 FT. BARK SCRIBING VISIBLE,  
 15' R. ALDER S67°E, 31.2 FT.  
 14' CEDAR N52°E, 34.2 FT. HEALED FACE  
 60' D. FIR STUMP S73.5°W, 41.0 FT. SCRIBING VISIBLE  
 1/2" REBAR S01°41'W, 34.5 FT.
- (5) CENTER 1/4 CORNER SECTION 14  
 SET: 5/8" X 30" REBAR, 0.2 FT ABOVE GROUND W/ YPC '2603'  
 BT: 18' D. FIR N69°E, 18.7 FT. BLAZED & SCRIBED 'C1/4 S14 BT'  
 14' D. FIR S36°W, 48.7 FT.  
 22' G. CHINKAPIN S40°E, 24.0 FT.  
 12' G. CHINKAPIN N65°E, 32.5 FT.
- (6) PROPERTY CORNER (306-161)  
 SET: 5/8" X 30" REBAR, 0.1 FT ABOVE GROUND W/ YPC '2603'  
 BT: 22' D. FIR S46°W, 44.7 FT. BLAZED & SCRIBED 'PC BT'  
 17' D. FIR S54°E, 45.0 FT.  
 NOTE: CORNER SET @ 675' FROM #7 (SENIOR DEED)  
 SET STEEL POST 1' SOUTH
- (7) CENTER-EAST 1/16 CORNER SECTION 14  
 SET: 5/8" X 30" REBAR, 0.1 FT ABOVE GROUND W/ YPC '2603'  
 BT: 31' D. FIR S01°E, 29.6 FT. BLAZED & SCRIBED 'CE1/16 S14 BT'  
 16' D. FIR S82°E, 19.4 FT.  
 SET STEEL POST 1' NORTH
- (8) PROPERTY CORNER (306-161)  
 SET: 5/8" X 30" REBAR, 0.4 FT ABOVE GROUND W/ YPC '2603'  
 BT: 10' D. FIR S14°W, 15.7 FT. BLAZED & SCRIBED 'PC BT'  
 6' CHINKAPIN N1°E, 14.2 FT. BLAZED & SCRIBED 'PC BT'  
 NOTE: PT LOCATED N89°03'53"W 17.30' (11.2) FROM E1/4 S14  
 SET STEEL POST 1' S45°W



- (9) 1/4 CORNER SECTIONS 14/13  
 FOUND: LCS D 2.5" BC, 1.0 FT ABOVE GRADE.  
 BT: 30' D. FIR N60°E, 108.2 FT. W/ AXE WORK & SCRIBING (STUMP)  
 36' D. FIR S78°W, 80.7 FT. STUMP  
 11' D. FIR N35°E, 59.3 FT. BLAZED & SCRIBED 'CS BT'  
 11' D. FIR N29°W, 59.4 FT.  
 5' D. FIR S28°E, 7.4 FT. BLAZED & SCRIBED '1/4 S14 BT'  
 10' D. FIR S58°E, 7.1 FT. '1/4 S13 BT'  
 NOTE: FOUND 1/2" REBAR S31°40'E, 3.9 FT. - UNKNOWN DRIGIN
- (10) PROPERTY CORNER (306-161)  
 SET: 5/8" X 30" REBAR, 0.1 FT. ABOVE GROUND W/ YPC '2603'  
 BT: 25' D. FIR N66°E, 21.4 FT. BLAZED & SCRIBED 'PC BT'  
 11' D. FIR S44°E, 48.3 FT. BLAZED & SCRIBED 'PC BT'  
 NOTE: PT LOCATED BEARING-BEARING INTERSECT (306-161)  
 SET STEEL POST 1' NORTH
- (11) PROPERTY CORNER (306-161)  
 SET: 5/8" X 30" REBAR, 2 GRADE W/ YPC '2603'  
 BT: 37' D. FIR N60°W, 27.7 FT. BLAZED & SCRIBED 'PC BT'  
 18' D. FIR S38°W, 38.3 FT. BLAZED & SCRIBED 'PC BT'  
 NOTE: PT LOCATED BEARING-DISTANCE FROM #6 (306-161)  
 SET STEEL POST 1' NORTH
- (12) PROPERTY CORNER (306-161)  
 SET: 5/8" X 30" REBAR, 0.4 FT. ABOVE GROUND W/ YPC '2603'  
 BT: 22' D. FIR S5°W, 14.1 FT. BLAZED & SCRIBED 'PC BT'  
 19' D. FIR S82°E, 9.3 FT. BLAZED & SCRIBED 'PC BT'  
 NOTE: PT LOCATED HOLDING DEED BEARING (ROTATED) AND DISTANCE.  
 SET STEEL POST 1' N°45E
- (13) PROPERTY CORNER (306-161)  
 SET: 5/8" X 30" REBAR, 0.4 FT ABOVE GROUND W/ YPC '2603'  
 BT: 10' D. FIR S49°E, 14.9 FT. BLAZED & SCRIBED 'PC BT'  
 11' D. FIR N27°E, 5.3 FT. BLAZED & SCRIBED 'PC BT'  
 NOTE: PT LOCATED HOLDING DEED BEARING (ROTATED) AND DISTANCE.  
 SET STEEL POST 2.5' NORTH
- (14) CENTER-SOUTH 1/16 CORNER  
 SET: 5/8" X 30" REBAR, 0.1 FT. ABOVE GROUND W/ YPC '2603'  
 BT: 27' D. FIR S30°W, 16.7 FT. BLAZED & SCRIBED 'CS1/16 S14 BT'  
 13' D. FIR N46°W, 12.1 FT. BLAZED & SCRIBED 'PC BT'  
 SET STEEL POST 1' NORTH
- (15) SOUTH-EAST 1/16 CORNER  
 SET: 5/8" X 30" REBAR, 0.1 FT. ABOVE GROUND W/ YPC '2603'  
 BT: 23' D. FIR N16°W, 3.2 FT. BLAZED & SCRIBED 'SE1/16 S14 BT'  
 15' D. FIR N71°E, 10.1 FT. BLAZED & SCRIBED 'PC BT'  
 SET STEEL POST 1' NORTH
- (16) PROPERTY CORNER (306-161)  
 SET: 5/8" X 30" REBAR, 0.6 FT. ABOVE GROUND W/ YPC '2603'  
 BT: 13' D. FIR N27°E, 7.3 FT. BLAZED & SCRIBED 'PC BT'  
 9' I. CEDAR S22°W, 40.5 FT. BLAZED & SCRIBED 'PC BT'  
 NOTE: PT SET AT PROPORTIONED DISTANCE ALONG 1/16 LINE (DEED)  
 SET STEEL POST 2' WEST
- (17) PROPERTY CORNER  
 SET: 5/8" X 30" REBAR, 0.2 FT ABOVE GROUND W/ YPC '2603'  
 BT: 5' D. FIR S89°E, 34.5 FT. BLAZED & SCRIBED 'X' 'BT'  
 5' D. FIR S36°E, 23.1 FT. BLAZED & SCRIBED 'X' 'BT'  
 5/8" REBAR W/ ODOT CAP S79°15'E, 6.1 FT. (UNKNOWN)  
 SET STEEL POST 1' SOUTH
- (18) PROPERTY CORNER  
 SET: 5/8" X 30" REBAR, 0.4 FT. ABOVE GROUND W/ YPC '2603'  
 BT: 11' D. FIR S22°E, 15.1 FT. BLAZED & SCRIBED 'PC BT'  
 19' D. FIR N40°E, 8.3 FT. BLAZED & SCRIBED 'PC BT'  
 SET STEEL POST 2' WEST
- (19) RM TO 1/4 CORNER SECTIONS 14/23 (NOT FOUND)  
 FOUND: 1982 BEARING TREE TO RM FOR 1/4 SECTIONS 14/23  
 BT: 22' W. HEMLOCK S15°W, 88.10 FT. HEALED FACE
- (20) 1/4 CORNER SECTIONS 14/23  
 FOUND: 5/8" REBAR, 0.25 FT. ABOVE GROUND  
 RM: 5/8" REBAR N89°E, 20.8 FT. W/ ODOT SIGN NEAR BY.  
 NOTE: RM AND 1/4 CORNER LAY IN ODOT STOCK PILE SITE.
- (21) SECTION CORNER SECTIONS 14-13/23-24  
 FOUND: 2.5" BLM BC .3 FT ABOVE GROUND  
 BTS: NOT TIED THIS SURVEY

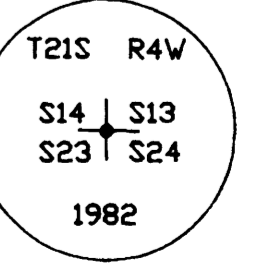


REGISTERED PROFESSIONAL LAND SURVEYOR  
 Harvey M. Christensen  
 OREGON  
 MARCH 16, 1993  
 HARVEY M. CHRISTENSEN  
 2603



LICENSE RENEWAL DATE DECEMBER 31, 2001

**NORTHWEST TIMBERLAND CONSULTING, INC.**  
**4680 BRIARS ST. - EUGENE, OR 97404-1113**  
**PHONE OR FAX (541) 461-4076**



MAP FILE M143-29

MAP FILE M143-29