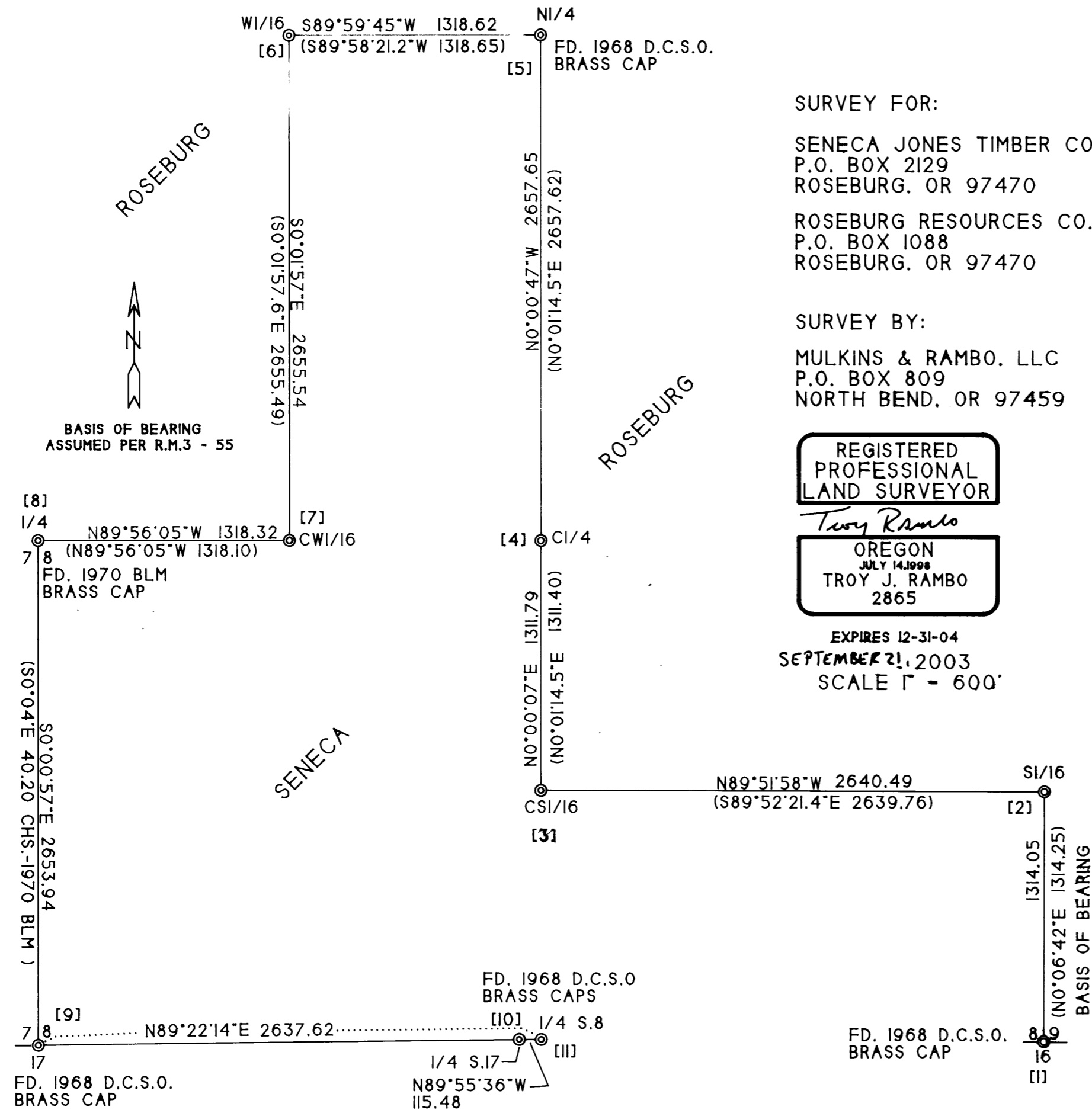


BOUNDARY SURVEY
 LOCATED IN SECTION 8, T.30S., R.2W., W.M.,
 DOUGLAS COUNTY, OREGON

FILED
 Date: 10-20-2003
 This survey consists of:
 Map: M143-15
 Narrative:
 Corner Rpt:
 DOUGLAS COUNTY
 SURVEYOR

MAP FILE M143-15



SURVEY FOR:
 SENECA JONES TIMBER COMPANY
 P.O. BOX 2129
 ROSEBURG, OR 97470
 ROSEBURG RESOURCES CO.
 P.O. BOX 1088
 ROSEBURG, OR 97470

SURVEY BY:
 MULKINS & RAMBO, LLC
 P.O. BOX 809
 NORTH BEND, OR 97459

REGISTERED
 PROFESSIONAL
 LAND SURVEYOR
Troy Rambo
 OREGON
 JULY 14, 1998
 TROY J. RAMBO
 2865

EXPIRES 12-31-04
 SEPTEMBER 21, 2003
 SCALE 1" = 600'

CORNER NOTES

- [1]: FD. A 26" DF WITH A HEALED FACE - BEARS N36°W, 65.0 FT.
 FD. AN 20" DF WITH A HEALED FACE - BEARS N65°E, 21.4 FT.
 FD. A 23" DF WITH A HEALED FACE - BEARS S25°W, 18.2 FT.
 CORNER FALLS IN A FENCE CORNER - FENCE RUNS NORTH AND EAST
- [2]: FD. 20" DF WITH A HEALED FACE - BEARS S54°E, 41.4 FT.
 FD. A 34" CEDAR WITH A HEALED FACE - BEARS S60°W, 55.5 FT.
- [3]: FD. A 23" DF WITH A HEALED FACE - BEARS S53°W, 26.5 FT.
 FD. A 27" DF WITH A HEALED FACE - BEARS S1°E, 7.0 FT.
- [4]: FD. A 16" DF WITH A HEALED FACE - BEARS N53°W, 16.7 FT.
 FD. AN 18" DF WITH A HEALED FACE - BEARS S5°W, 8.4 FT.
 FD. A STEEL FENCE POST - BEARS S86°E, 1.9 FT.
 SCRIBED "CI/4 BT" ON A 19" DF - BEARS S75°E, 20.8 FT.
- [5]: FD. A 32" DF WITH A HEALED FACE - BEARS NORTH, 19.8 FT.
 FD. A 28" MADRONE WITH A HEALED FACE BEARS - N69°W, 23.4 FT.
 FD. A 12" CEDAR WITH A HEALED FACE - BEARS S18°E, 14.0 FT.
 BARK SCRIBED "1/4 S8 BT" ON A 45" DF - BEARS S54°W, 2.1 FT. TO
 A TO 6" SPIKE • BASE OF SCRIBES
- [6]: FD. A 17" HEMLOCK WITH A HEALED FACE - BEARS S18°E, 50.0 FT.
 FD. A 56" DF WITH A HEALED FACE - BEARS N60°E, 42.7 FT.
- [7]: FD. A 13" DF WITH A HEALED FACE - BEARS N62°W, 5.2 FT.
 FD. A 16" DF WITH A HEALED FACE - BEARS N28°E, 25.6 FT.
- [8]: FD. A 14" GF WITH A HEALED FACE - BEARS N60 1/2°W, 22.4 FT.
 FD. A 15" PINE WITH A HEALED FACE - BEARS N57°E, 14.8 FT.
 SCRIBED "1/4 S7 BT" ON AN 8" DF - BEARS S36°W, 16.9 FT.
 BARK SCRIBED "1/4 S8 BT" ON A 15" MAPLE - BEARS S36°E, 24.1 FT.
- [9]: FD. A 29" DF WITH A HEALED FACE - BEARS N8°E, 19.2 FT.
 FD. A 13" WH SNAG WITH VISIBLE SCRIBES - BEARS S47°E, 29.1 FT.
 CHOPPED AN "X" AT DBH ON A 21" GF - BEARS S45°W, 28.9 FT.
 DID NOT LOOK FOR THE RECORD 10" WH BEARING N16°W, 67.4 FT.
 SET A STEEL POST 1.1 FT. NORTH
- [10]: FD. D.C.S.O. BRASS CAP AND RECORD BT'S IN PLACE
- [11]: FD. A 12" MAPLE WITH NO MARKS - BEARS N40°E, 29.0 FT.
 FD. A 40" DF STUMP WITH VISIBLE SCRIBES - BEARS N41 1/2°W, 21.8 FT.
 FD. A 15" WH WITH A HEALED FACE - BEARS N2 3/4°W, 24.2 FT.
 FD. A 10" DF WITH A HEALED FACE BEARS - S69 1/4°W, 21.3 FT.

LEGEND

- ⊙ FD. A 2 1/2" BRASS CAPS PER RM3 - 55
 UNLESS OTHERWISE NOTED
- LINES FLAGGED, BLAZED, AND MARKED
 WITH 5 1/2" STEEL POSTS
- () RECORD BEARING/DISTANCE PER RM3 - 55
 UNLESS OTHERWISE NOTED
- [] CORNER REFERENCE NUMBER

NARRATIVE

THE PURPOSE OF THIS SURVEY WAS TO ESTABLISH THE BOUNDARIES AS SHOWN FOR FUTURE FOREST OPERATIONS.
 CONTROL FOR THIS SURVEY WAS BASED ON R.M.3 - 55, THE 1970 DEPENDENT RESURVEY, PORTION OF SUBDIVISIONAL LINES, T.30S., R.2W., W.M., OREGON, AND THE 1968 D.C.S.O. CORNER RENEWALS.
 ALL NEW BEARING TREES WERE MEASURED TO A 6" SPIKE AT SIDE CENTER BASE. BEARINGS WERE MEASURED WITH A HAND COMPASS WITH A DECLINATION OF 17' EAST.
 THE FIELD WORK WAS PERFORMED BETWEEN SEPTEMBER OF 2002 AND SEPTEMBER 19, 2003 BY TROY RAMBO, CLYDE MULKINS, AND JOSH WALLMAN.

MAP FILE M143-15