

BOUNDARY SURVEY
FOR: SENECA JONES TIMBER COMPANY
SE1/4, S13 & NE1/4, S24, T25S, R2W, W.M.
DOUGLAS COUNTY, OREGON
15, AUGUST 2003



FILED
 Date 8/26/2003 By: JP
 This survey consists of:
 Map: M142-79
 Narrative: _____
 Corner Rpt: _____
DOUGLAS COUNTY
SURVEYOR

(A)
 CLOSING CORNER COMMON TO SECTIONS 18, 19
 TOWNSHIP 25 SOUTH, RANGE 1 WEST

FOUND 3-1/4" BLM BC DATED 1978
 WITH THE FOLLOWING ACCESSORIES;
 9" D. FIR BEARS N68-1/4°E 6.6' (HEALED FACE)
 (RECORD N71-1/2°E)
 10" D. FIR BEARS S44-1/4°E 13.5' (HEALED FACE)
 (RECORD S39-1/4°E)

(B)
 SE1/16 CORNER SECTION 13

FOUND 3" BLM BC DATED 2002
 WITH THE FOLLOWING ACCESSORIES;
 9" HEMLOCK BEARS S35-1/2°E 21.2' (OPEN FACE SCRIBING VISIBLE)
 11" D. FIR BEARS S66°W 12.6' (OPEN FACE SCRIBING VISIBLE)

(C)
 S1/16 CORNER EAST LINE SECTION 13 ONLY

FOUND 3" BLM BC DATED 1978
 WITH THE FOLLOWING ACCESSORIES;
 11" D. FIR BEARS S65-1/2°W 22.1' (HEALED FACE)
 8" D. FIR BEARS N30-1/2°W 5.6' (HEALED FACE)

(D)
 E1/16 CORNER SECTION 13, 24

FOUND 3" BLM BC DATED 2002
 WITH THE FOLLOWING ACCESSORIES;
 10" D. FIR BEARS N16°E 8.4' (OPEN FACE SCRIBING VISIBLE)
 17" D. FIR BEARS S20-1/2°E 21.5' (OPEN FACE SCRIBING VISIBLE)

(E)
 SECTION CORNER COMMON TO SECTIONS 13, 24 ONLY

FOUND 3" BLM BC DATED 1978
 WITH THE FOLLOWING ACCESSORIES;
 28" D. FIR STUMP BEARS N34-1/2°W 19.1' (VISIBLE SCRIBING)
 16" D. FIR BEARS S27°W 5.6' (HEALED FACE RECORD S32-1/2°W 6.3')
 11" D. FIR BEARS N21-3/4°W 15.2' (HEALED FACE)

(F)
 W1/4 CORNER SECTION 19 ONLY TOWNSHIP 25 SOUTH,
 RANGE 1 WEST

FOUND 3" BLM BC SET IN BEDROCK DATED 1978
 WITH THE FOLLOWING ACCESSORIES;
 18" CEDAR SNAG BEARS N71-1/2°E 42.6' (SCRIBING VISIBLE)
 15" D. FIR BEARS S76-3/4°E 45.2' (HEALED FACE)
 "X BO" IN EXPOSED BEDROCK BEARS S57-3/4°W 4.3'
 NOTE: NO GALVANIZED STEEL POST SET NEAR CORNER

(G)
 NE1/16 CORNER SECTION 24

SET 5/8" X 3/8" REBAR WITH 2-1/2" ALUMINUM CAP
 MARKED AS SHOWN WITH THE FOLLOWING ACCESSORIES;
 26" HEMLOCK BEARS N39-1/2°W 23.6'
 (SEMI-HEALED FACE SCRIBING VISIBLE HOSFORD BT)

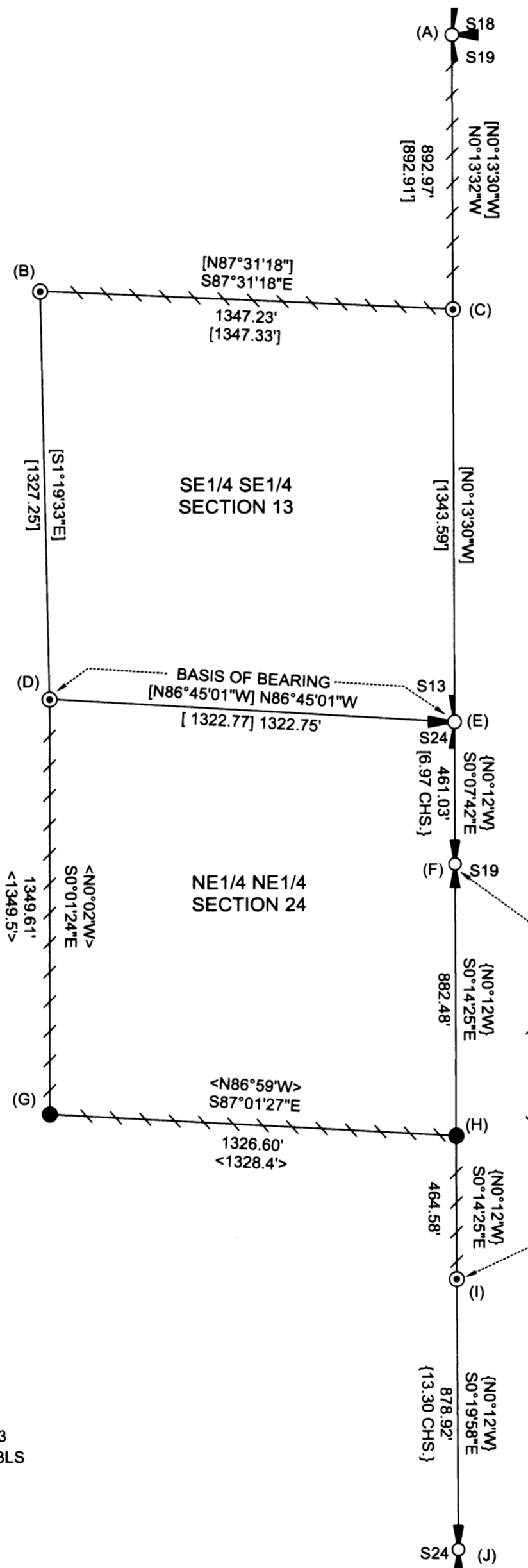
NEW BT THIS SURVEY
 8" R. CEDAR BEARS N33°E 4.9' BLAZED, SCRIBED
 "NE 1/16 S24 BT"

(H)
 N1/16 CORNER EAST LINE SECTION 24 ONLY

SET 5/8" X 3/8" REBAR WITH 2-1/2" ALUMINUM CAP
 MARKED AS SHOWN WITH THE FOLLOWING ACCESSORIES;
 13" D. FIR BEARS N31-3/4°W 54.6' BLAZED, SCRIBED "N1/16 S24 BT"
 15" D. FIR BEARS S60-1/2°W 54.8' BLAZED, SCRIBED "N1/16 S24 BT"

LEGEND

- SET MONUMENT AS NOTED
- ⊙ FOUND MONUMENT AS NOTED
- ⊙ FOUND 1/16 CORNER MONUMENT AS NOTED
- POSTED LINE
- ⊙ FOUND 1/4 CORNER MONUMENT AS NOTED
- { } 1978 BLM RECORD DATA
- [] 2001-2002 BLM UNOFFICIAL DATA
- < > M16-5 RECORD DATA



NARRATIVE

THE PURPOSE OF THIS SURVEY WAS TO LOCATE AND MARK THE SECTION AND SUBDIVISIONAL LINES OF SECTIONS 13 AND 24 WHICH ARE SHOWN AS POSTED ON THIS PLAT. THIS BOUNDARY SURVEY ALSO REQUIRED THE LOCATION AND MONUMENTATION OF THE N1/16 CORNER ON THE EAST LINE OF SECTION 24.

A PORTION OF THE RANGE LINE BETWEEN R1W AND R2W WAS RETRACED AND MONUMENTED BY V. W. HOSFORD IN 1950 AND AGAIN BY BLM IN 1978. THESE CORNERS WERE TIED AND HELD AS CONTROL FOR CALCULATING THE POSITION FOR THE N1/16 CORNER OF SECTION 24 AND THE POSTING OF LINE.

THE MONUMENTS USED AS CONTROL FOR THE SUBDIVISION OF SECTION 13 WERE SET BY BLM IN 2001-2002, IN A YET TO BE APPROVED SURVEY. THE EVIDENCE USED TO REESTABLISH THE NE1/16 CORNER OF SECTION 24 WAS RECOVERED FROM A 1955 SUBDIVISION OF SECTION 24 BY V. W. HOSFORD AND RECORDED AS DOUGLAS COUNTY SURVEY FILE M16-5. THE N1/16 CORNER WAS SET AT RECORD BEARING AND DISTANCE FROM THE ONE REMAINING BEARING TREE.

ALL LINES SHOWN AS POSTED WERE MARKED WITH RED PAINTED BLAZES, RED FLAGGING AND GALVANIZED STEEL POSTS. MONUMENTS SHOWN AS FOUND OR SET ON THIS PLAT HAVE A GALVANIZED STEEL POST ADJACENT TO THE CORNER UNLESS OTHERWISE NOTED. ALSO ALL BEARING TREES HAVE A RED PAINTED BAND AND FACE PLUS YELLOW BEARING TREE TAG.

THE BASIS OF BEARING FOR THIS SURVEY IS THE BLM UNOFFICIAL RECORD FOR THE SECTION LINE BETWEEN THE E1/16 CORNER COMMON TO SECTIONS 13 AND 24, AND THE EAST SECTION CORNER COMMON TO SECTIONS 13 AND 24 ONLY.

THIS SURVEY WAS PERFORMED USING A NIKON TOTAL STATION.

(I)
 S1/16 CORNER EAST LINE SECTION 19 ONLY
 TOWNSHIP 25 SOUTH, RANGE 1 WEST

FOUND 3" BLM BC DATED 1978
 WITH THE FOLLOWING ACCESSORIES;
 13" HEMLOCK BEARS N36-1/2°E 57.4' (SEMI-HEALED FACE)
 8" R. CEDAR BEARS S29°E 6.6' (SEMI-HEALED FACE)

(J)
 E1/4 SECTION 24 ONLY

FOUND 2" IRON PIPE WITH 2-1/4" IRON CAP
 MARKED WITH CENTER PUNCH ONLY
 WITH THE FOLLOWING ACCESSORIES;
 32" D. FIR STUMP BEARS S57°W 16.8' (HEALED FACE)
 28" D. FIR STUMP BEARS N27°W 19.8' (SCRIBING VISIBLE)

NEW BT'S THIS SURVEY
 7" D. FIR BEARS S78°W 12.0' BLAZED, SCRIBED "1/4 S24 BT"
 5" D. FIR BEARS S06°W 10.1' BLAZED, SCRIBED "1/4 S24 BT"

REGISTERED
 PROFESSIONAL
 LAND SURVEYOR
Ronald L. Rice
 OREGON
 JULY 9, 2002
 RONALD L. RICE
 54633LS

EXPIRES: 12-31-2004

Ward NorthWest, Inc.
 P.O. BOX 105 FLORENCE, OR 97439
 (541) 997-9201 FAX: 541-997-3546

FILE NAME		
03-54PLAT.TRV		
SCALE	DATE	DRAWN BY
400 Ft/in	8/15/03	RLR
JOB	REVISION	SHEET
03-54	-----	1/1

This map drawn with TRAVERSE PC Software