

BOUNDARY SURVEY
 LOCATED IN SECTION 12, T.30S., R.9W., W.M.,
 DOUGLAS COUNTY, OREGON

SURVEY FOR:
 ROSEBURG RESOURCES CO.
 P.O. BOX 1088
 ROSEBURG, OR 97470

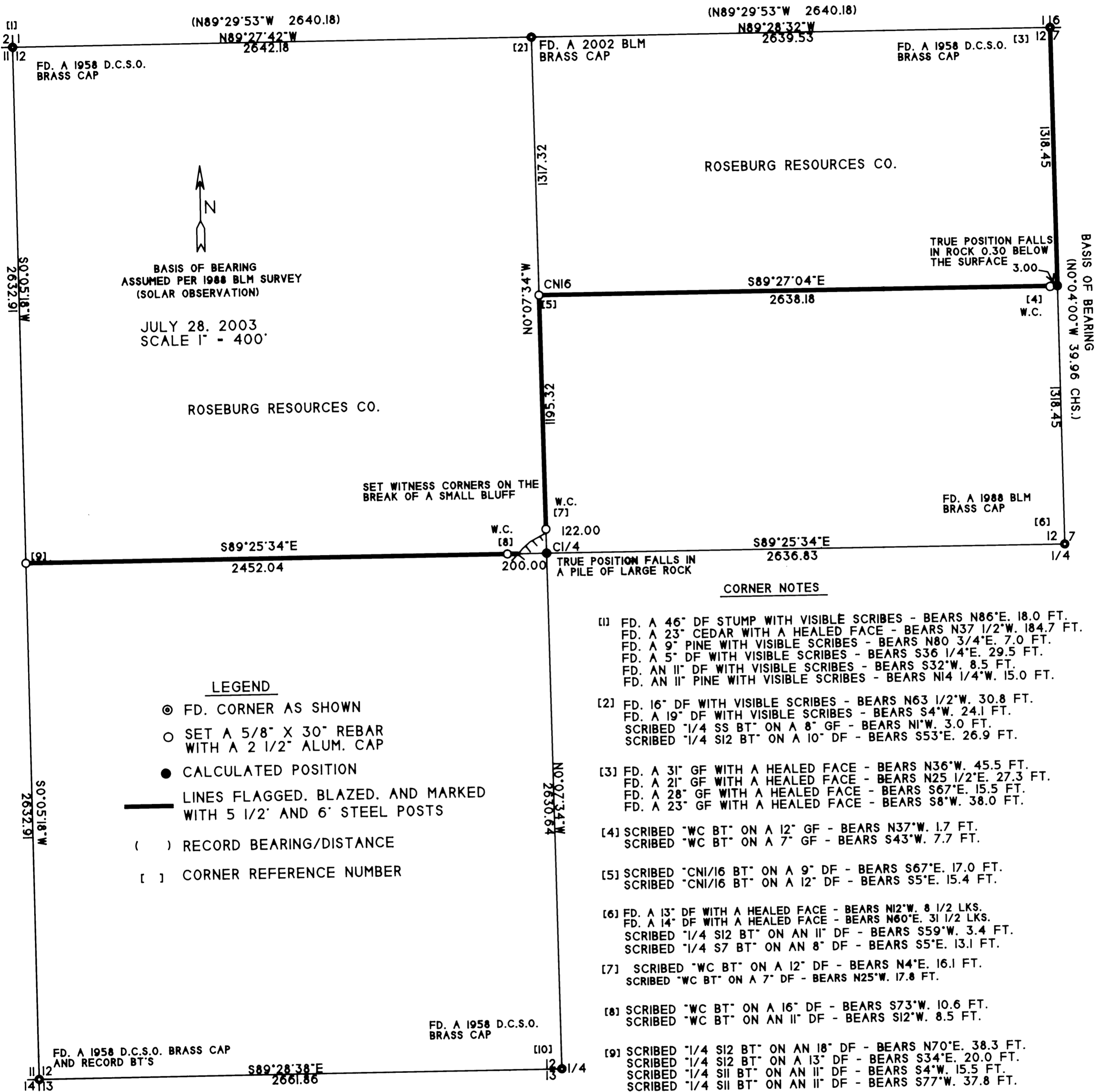
SURVEY BY:
 MULKINS & RAMBO, LLC
 P.O. BOX 809
 NORTH BEND, OR 97459

REGISTERED
 PROFESSIONAL
 LAND SURVEYOR
Troy Rambo
 OREGON
 JULY 14, 1998
 TROY J. RAMBO
 2865

EXPIRES 12-31-04

FILED
 Date: 8-13-2003 By: JC
 This survey consists of:
 Map: M142-69
 Narrative: _____
 Corner Rpt: _____

DOUGLAS COUNTY
 SURVEYOR



CORNER NOTES

- [1] FD. A 46" DF STUMP WITH VISIBLE SCRIBES - BEARS N86°E, 18.0 FT.
 FD. A 23" CEDAR WITH A HEALED FACE - BEARS N37 1/2°W, 184.7 FT.
 FD. A 9" PINE WITH VISIBLE SCRIBES - BEARS N80 3/4°E, 7.0 FT.
 FD. A 5" DF WITH VISIBLE SCRIBES - BEARS S36 1/4°E, 29.5 FT.
 FD. AN 11" DF WITH VISIBLE SCRIBES - BEARS S32°W, 8.5 FT.
 FD. AN 11" PINE WITH VISIBLE SCRIBES - BEARS N14 1/4°W, 15.0 FT.
- [2] FD. 16" DF WITH VISIBLE SCRIBES - BEARS N63 1/2°W, 30.8 FT.
 FD. A 19" DF WITH VISIBLE SCRIBES - BEARS S4°W, 24.1 FT.
 SCRIBED 1/4 SS BT ON A 8" GF - BEARS N1°W, 3.0 FT.
 SCRIBED 1/4 S12 BT ON A 10" DF - BEARS S53°E, 26.9 FT.
- [3] FD. A 31" GF WITH A HEALED FACE - BEARS N36°W, 45.5 FT.
 FD. A 21" GF WITH A HEALED FACE - BEARS N25 1/2°E, 27.3 FT.
 FD. A 28" GF WITH A HEALED FACE - BEARS S67°E, 15.5 FT.
 FD. A 23" GF WITH A HEALED FACE - BEARS S8°W, 38.0 FT.
- [4] SCRIBED "WC BT" ON A 12" GF - BEARS N37°W, 1.7 FT.
 SCRIBED "WC BT" ON A 7" GF - BEARS S43°W, 7.7 FT.
- [5] SCRIBED "CNI/16 BT" ON A 9" DF - BEARS S67°E, 17.0 FT.
 SCRIBED "CNI/16 BT" ON A 12" DF - BEARS S5°E, 15.4 FT.
- [6] FD. A 13" DF WITH A HEALED FACE - BEARS N12°W, 8 1/2 LKS.
 FD. A 14" DF WITH A HEALED FACE - BEARS N60°E, 31 1/2 LKS.
 SCRIBED 1/4 S12 BT ON AN 11" DF - BEARS S59°W, 3.4 FT.
 SCRIBED 1/4 S7 BT ON AN 8" DF - BEARS S5°E, 13.1 FT.
- [7] SCRIBED "WC BT" ON A 12" DF - BEARS N4°E, 16.1 FT.
 SCRIBED "WC BT" ON A 7" DF - BEARS N25°W, 17.8 FT.
- [8] SCRIBED "WC BT" ON A 16" DF - BEARS S73°W, 10.6 FT.
 SCRIBED "WC BT" ON AN 11" DF - BEARS S12°W, 8.5 FT.
- [9] SCRIBED 1/4 S12 BT ON AN 18" DF - BEARS N70°E, 38.3 FT.
 SCRIBED 1/4 S12 BT ON A 13" DF - BEARS S34°E, 20.0 FT.
 SCRIBED 1/4 S11 BT ON AN 11" DF - BEARS S4°W, 15.5 FT.
 SCRIBED 1/4 S11 BT ON AN 11" DF - BEARS S77°W, 37.8 FT.
- [10] FD. THE REMAINS OF A CEDAR STUMP - BEARS N29°W, 39.6 FT.
 FD. A 22" OAK WITH A ROTTEN FACE - BEARS N18°E, 83.8 FT.
 FD. A 26" DF SNAG WITH A HEALED FACE - BEARS S74 1/2°E, 26.7 FT.
 THE RECORD 36" LAUREL - GONE
 FD. A 17" PINE WITH VISIBLE SCRIBES - BEARS S38°W, 114.8 FT.

NARRATIVE

THE PURPOSE OF THIS SURVEY WAS TO ESTABLISH THE BOUNDARIES AS SHOWN FOR FUTURE FOREST OPERATIONS. CONTROL FOR THIS SURVEY WAS BASED ON: M101-44; THE DEPENDENT RESURVEY OF A PORTION OF THE EAST BOUNDARY OF T.30S., R.9W.; DEPENDENT RESURVEY OF A PORTION OF THE SUBDIVISIONAL LINES, T.30S., R.9W., W.M., OREGON.
 FOR SOME REASON THE CORNERS ESTABLISHED IN M101-44 WERE SET INCORRECTLY. THESE POSITIONS WERE NOT ACCEPTED IN THIS SURVEY. THE MONUMENTS AT THE W1/4 AND N1/4(M101-44) WERE PULLED AND THE CAP WAS REMOVED AND THE REBAR WAS DRIVEN UNDER THE SURFACE AT THE CNI/16 POSITION. AND ALL BT TAGS WERE REMOVED AT THE REQUEST OF ROSEBURG RESOURCES CO.. (THESE CORNERS WERE ANYWHERE FROM 40' TO 80' OUT OF POSITION).
 ALL NEW BEARING TREES WERE MEASURED TO A 6" SPIKE AT SIDE CENTER BASE. BEARINGS WERE MEASURED WITH A HAND COMPASS WITH A DECLINATION OF 17' EAST.
 THE FIELD WORK WAS PERFORMED BETWEEN MAY 12 AND JULY 28, 2003 BY TROY RAMBO AND JOSH WALLMAN.