

MAP OF SURVEY

LOCATED in the NW 1/4 of Section 26, T. 29 S., R. 8 W., W.M.
in Douglas County, Oregon.

April 21, 2003

COUNTY SURVEYORS FILE DATA
DO NOT REMOVE FROM OFFICE

FILED
Date: 4/28/2003 By: JP
This survey consists of:
Map: M 142-6
Narrative: _____
Corner Rpt: _____

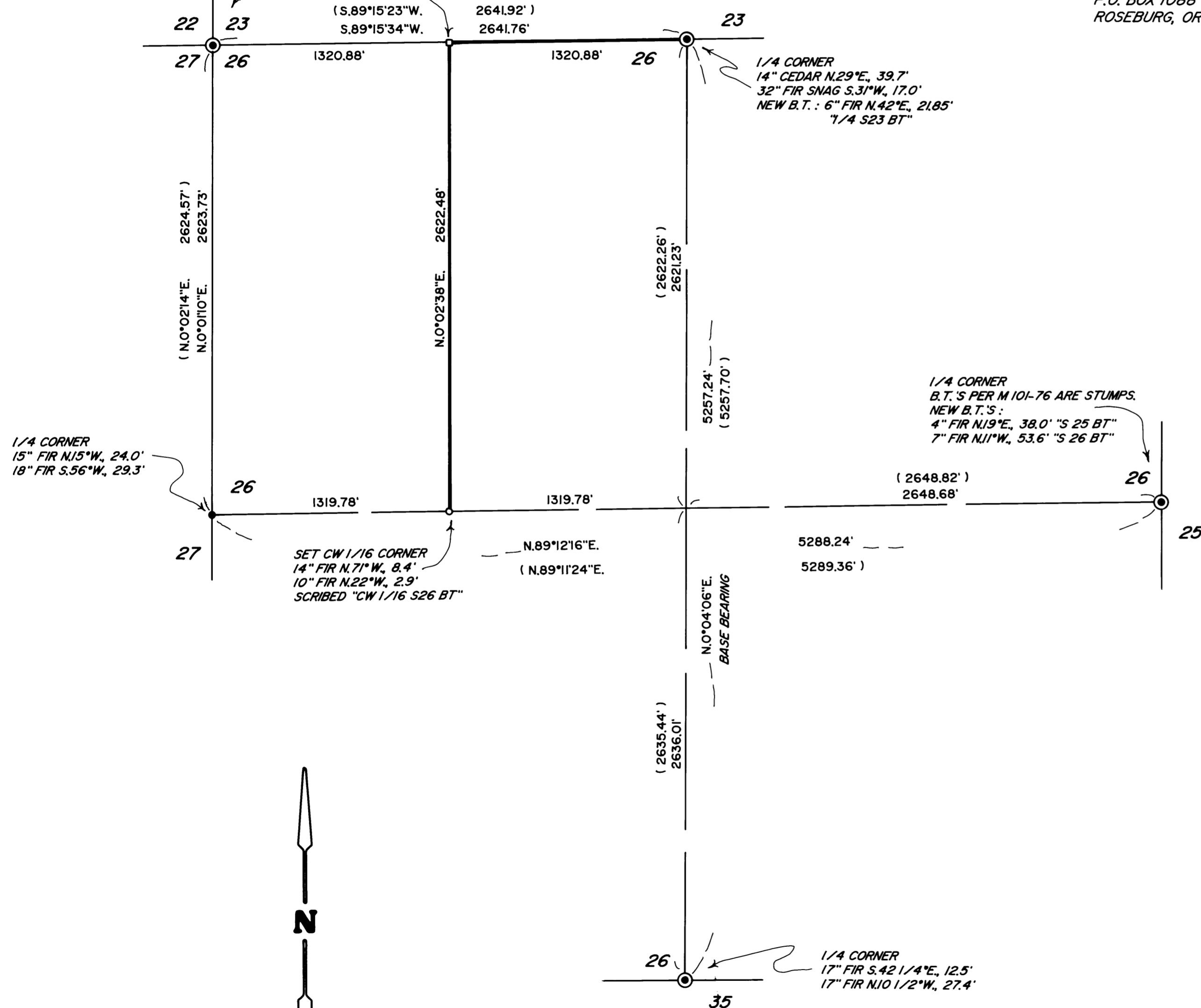
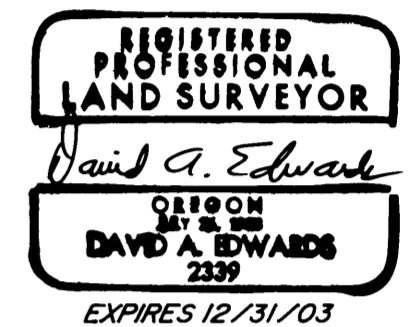
DOUGLAS COUNTY
SURVEYOR

SECTION CORNER
12" CHINQUAPIN NORTH 28.0'
12" FIR N.82°E., 4.0'
17" CHINQUAPIN S.65°W., 19.0'
NEW B.T.:
9" CHINQUAPIN S.53°E., 8.4'
"S 26 BT"

SET WEST 1/16 CORNER
15" FIR N.17°E., 17.5" "W 1/16 S23 BT"
6" FIR N.45°W., 12.5" "W 1/16 S23 BT"
SET STEEL POST N.43°W., 5.5"
COULD NOT GET POST IN ON LINE EITHER
EAST OR SOUTH DUE TO ROCK OUTCROP

SURVEYED FOR: ROSEBURG RESOURCES
P.O. BOX 1088
ROSEBURG, OREGON

SURVEYED BY: DAVID EDWARDS LAND SURVEYING
P.O. BOX 361
OAKLAND, OREGON 97462
PHONE: (541) 459-0512



LEGEND

- ⊙ INDICATES B.L.M. OR D.C.S. BRASS CAP FOUND.
- INDICATES 5/8" X 30" STEEL PIN WITH ALUMINUM CAP MKD. "ROSEBURG RESOURCES", "LS 2339" AND "2003" SET.
- INDICATES 5/8" DIAM. IRON ROD FOUND PER M 101-76.
- INDICATES 2" DIAM. BRASS CAP MKD. "LS 2339" AND "2003" SET IN SOLID ROCK.
- () DENOTES RECORD DATA PER M 101-76.
- INDICATES LINE BLAZED, POSTED AND FLAGGED.

SCALE: 1" = 500'

BASIS OF BEARINGS: M 101-76 AS SHOWN.

NARRATIVE

THE PURPOSE OF THIS SURVEY IS TO MONUMENT THE WEST 1/16 CORNER COMMON TO SECTIONS 23 AND 26 AND THE CENTER-WEST 1/16 CORNER OF SECTION 26 AND TO BLAZE, POST AND FLAG THE BOUNDARIES SHOWN AS BOLD LINES HEREON.

AFTER TYING IN THE CONTROLLING MONUMENTS I COMPUTE THE SUBDIVISION OF THE NW QUARTER AS SHOWN. THE LINES WERE MARKED BY BLAZING TREES ON BOTH SIDES OF LINE, BY SETTING 6 FOOT STEEL POSTS ALONG THE LINES AT INTERVALS OF 200' OR LESS AND BY HANGING RED FLAGGING ALONG THE TRUE LINES.

FIELD CREW: BRANT MILLER AND BRANDY SWEARINGEN.

EQUIPMENT: NIKON TOTAL STATION.

COMPS. AND DRAFTING: DAVID EDWARDS.

