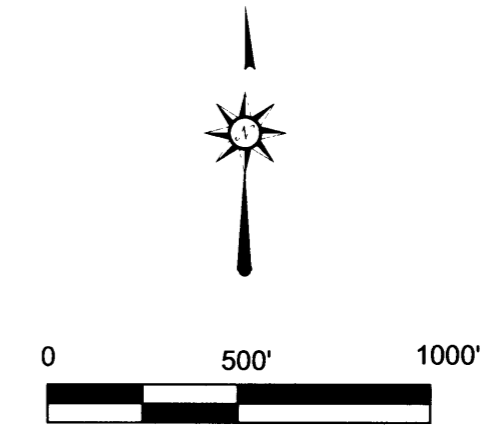


PROPERTY SURVEY  
 FOR: ROSEBURG RESOURCES COMPANY  
 NW1/4, NE1/4, SE1/4, SW1/4, S24, T24S, R8W, W.M.  
 DOUGLAS COUNTY, OREGON  
 24, JUNE 2003

FILED  
 Date: 7/2/2003 By: JJP  
 This survey consists of:  
 Map: M142-47  
 Narrative:  
 Corner Rpt:  
 DOUGLAS COUNTY  
 SURVEYOR



(A)  
 SECTION CORNER SECTIONS 13,14,23,24  
 FOUND 2-1/2" COUNTY SURVEYORS BRASS  
 CAP DATED 1960 WITH THE FOLLOWING  
 ACCESSORIES.  
 47" D. FIR BEARS S18°W 56.1' (HEALED  
 FACE)  
 21" D. FIR BEARS S74°W 17.7' (HEALED  
 FACE)  
 28" W. FIR BEARS N42°W 53.8' (HEALED  
 FACE)  
 24" D. FIR BEARS S02°E 39.0' (HEALED FACE)  
 24" D. FIR BEARS N33°E 42.0' (HEALED  
 FACE)

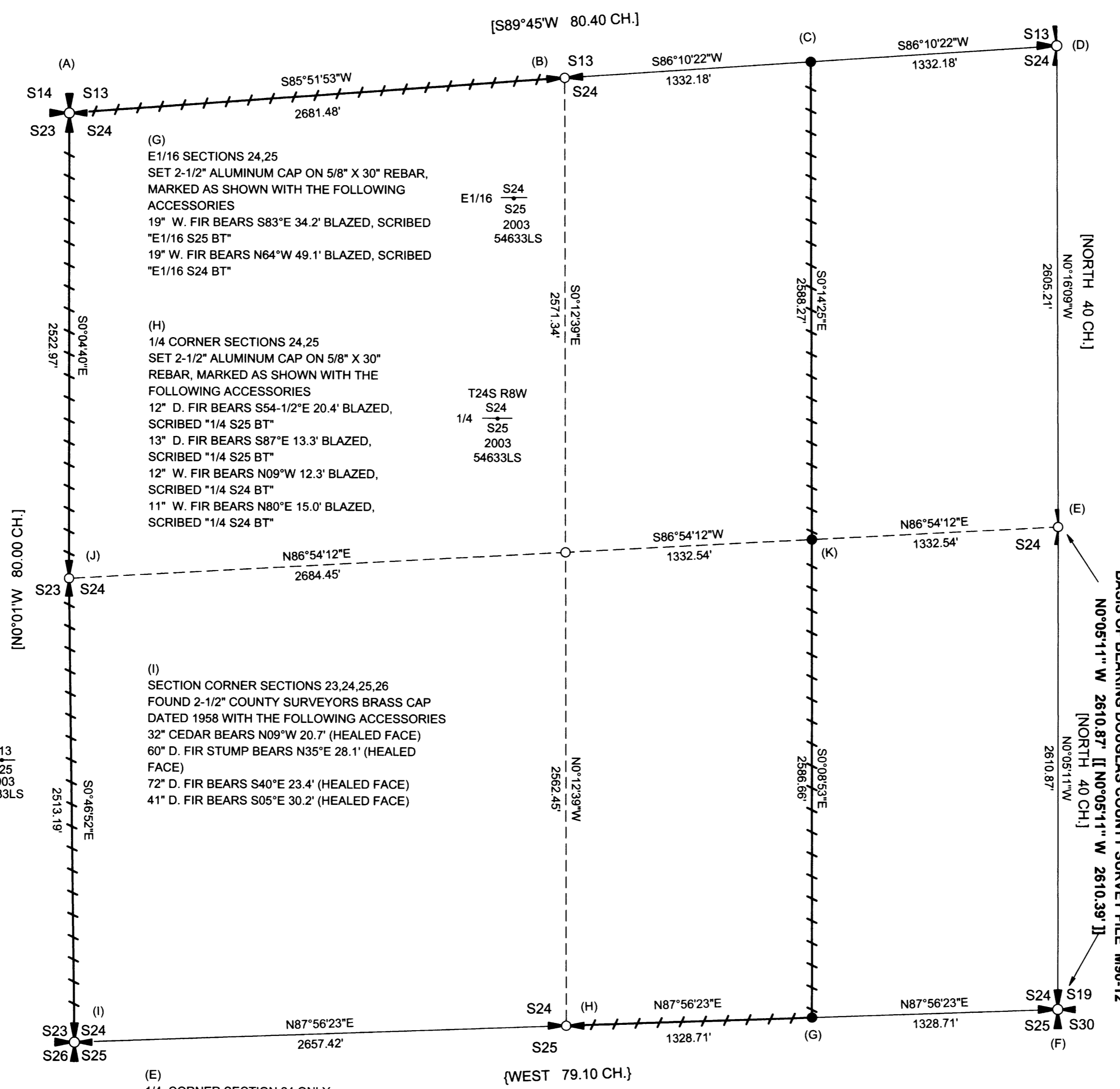
(B)  
 1/4 CONER SECTIONS 13,24  
 FOUND 2-1/2" COUNTY SURVEYORS BRASS  
 CAP DATED 1966 WITH THE FOLLOWING  
 ACCESSORIES.  
 48" BURNED FIR STUMP BEARS S16°W 13.2'  
 36" BURNED ROTTED FIR STUMP BEARS  
 N75°W 24.4'  
 12" D. FIR SNAG BEARS S44°E 51.6' (HEALED  
 FACE)

NEW BT'S THIS SURVEY  
 11" D. FIR BEARS S45°W 4.8' BLAZED,  
 SCRIBED "1/4 S24 BT"  
 11" D. FIR BEARS S88-1/2°W 54.3' BLAZED,  
 SCRIBED "1/4 S24 BT"  
 7" D. FIR BEARS N75°W 25.6' BLAZED,  
 SCRIBED "1/4 S13 BT"  
 10" D. FIR BEARS N20°W 36.5' BLAZED,  
 SCRIBED "1/4 S13 BT"

(C)  
 E1/16 SECTIONS 13,24  
 SET 2-1/2" ALUMINUM CAP ON 5/8" X 30"  
 REBAR MARKED AS SHOWN WITH THE  
 FOLLOWING ACCESSORIES  
 22" D. FIR BEARS S54°W 29.7' BLAZED,  
 SCRIBED "E1/16 S24 BT"  
 18" D. FIR BEARS N24°E 3.5' BLAZED,  
 SCRIBED "E1/16 S13 BT"

(D)  
 SECTION CORNER FOR SECTIONS 13,24 ONLY  
 FOUND 2-1/2" BRASS CAP DATED 1981 WITH THE  
 FOLLOWING ACCESSORIES  
 20" FIR BEARS N52°W 24.8' (HEALED FACE)  
 32" FIR BEARS S18°W 24.2' (HEALED FACE)

NEW BT THIS SURVEY  
 31" D. FIR BEARS N74°E 20.2' BLAZED, SCRIBED  
 "X BT" AT BASE



(G)  
 E1/16 SECTIONS 24,25  
 SET 2-1/2" ALUMINUM CAP ON 5/8" X 30"  
 REBAR, MARKED AS SHOWN WITH THE FOLLOWING  
 ACCESSORIES  
 19" W. FIR BEARS S83°E 34.2' BLAZED, SCRIBED  
 "E1/16 S25 BT"  
 19" W. FIR BEARS N64°W 49.1' BLAZED, SCRIBED  
 "E1/16 S24 BT"

(H)  
 1/4 CORNER SECTIONS 24,25  
 SET 2-1/2" ALUMINUM CAP ON 5/8" X 30"  
 REBAR, MARKED AS SHOWN WITH THE  
 FOLLOWING ACCESSORIES  
 12" D. FIR BEARS S54-1/2°E 20.4' BLAZED,  
 SCRIBED "1/4 S25 BT"  
 13" D. FIR BEARS S87°E 13.3' BLAZED,  
 SCRIBED "1/4 S25 BT"  
 12" W. FIR BEARS N09°W 12.3' BLAZED,  
 SCRIBED "1/4 S24 BT"  
 11" W. FIR BEARS N80°E 15.0' BLAZED,  
 SCRIBED "1/4 S24 BT"

(I)  
 SECTION CORNER SECTIONS 23,24,25,26  
 FOUND 2-1/2" COUNTY SURVEYORS BRASS  
 CAP DATED 1958 WITH THE FOLLOWING ACCESSORIES  
 32" CEDAR BEARS N09°W 20.7' (HEALED FACE)  
 60" D. FIR STUMP BEARS N35°E 28.1' (HEALED  
 FACE)  
 72" D. FIR BEARS S40°E 23.4' (HEALED FACE)  
 41" D. FIR BEARS S05°E 30.2' (HEALED FACE)

(E)  
 1/4 CORNER SECTION 24 ONLY  
 FOUND 2-1/2" COUNTY SURVEYORS BRASS CAP  
 DATED 1960 WITH THE FOLLOWING  
 ACCESSORIES  
 26" W. FIR (RECORD R. FIR) BEARS S79°W 46.8'  
 (HEALED FACE)  
 34" D. FIR (RECORD W. FIR) BEARS S36°W 9.5'  
 (HEALED FACE)  
 2-1/2" BRASS CAP MARKING THE W1/4 CORNER  
 OF SECTION 19 BEARS N0°16'28"W 43.06'

NEW BT THIS SURVEY  
 8" D. FIR BEARS S52-1/2°E 22.0' BLAZED,  
 SCRIBED "X BT" AT BASE

(F)  
 SECTION CORNER SECTIONS 19,24,25,30  
 FOUND 2-1/2" COUNTY SURVEYORS BRASS CAP  
 DATED 1958 WITH THE FOLLOWING ACCESSORIES  
 15" CEDAR BEARS S10-1/2°W 38.6' (HEALED FACE)  
 4" + MARK AND "BO" CHISELED IN SANDSTONE BLUFF  
 5' ABOVE GROUND  
 ON 10' HIGH FACE WHICH BEARS S45°E 7.8'  
 32" MAPLE BEARS N17°E 44.0' (ROTTED FACE)  
 28" W. FIR BEARS N82°W 64.3' (HEALED FACE)

NARRATIVE

THE PURPOSE OF THIS SURVEY WAS TO SUBDIVIDE SECTION 24,  
 TOWNSHIP 24 SOUTH, RANGE 8 WEST, WILLAMETTE MERIDIAN,  
 ACCORDING TO THE 1973 BLM MANUAL OF SURVEYING  
 INSTRUCTION AND TO POST THE LINES AND SET THE CORNERS  
 NOTED ON THIS PLAT.

A CLOSED LOOP CONTROL TRAVERSE WAS RUN TO TIE ALL  
 CONTROLLING CORNERS AND ESTABLISH A SEARCH AREA FOR  
 THE SOUTH 1/4 CORNER. NO EVIDENCE WAS FOUND FOR THE  
 SOUTH 1/4 CORNER SO IT WAS REESTABLISHED AT  
 PROPORTIONATE POSITION.

THE BASIS OF BEARING FOR THIS SURVEY WAS THE RECORD FOR  
 THE SOUTH 1/2 MILE OF THE EAST LINE OF SECTION 24 AS  
 RECORDED IN DOUGLAS COUNTY SURVEY FILE M90-12.

ALL LINES SHOWN AS POSTED ARE MARKED WITH RED PAINTED  
 BLAZES, RED FLAGGING AND 5-1/2" GALVANIZED STEEL POSTS.  
 EXISTING CORNERS OR CORNERS ESTABLISHED AS A RESULT OF  
 THIS SURVEY HAVE A GALVANIZED STEEL POST ADJACENT TO  
 THE CORNER MONUMENT AND ACCESSORIES HAVE RED PAINTED  
 BANDS AND BEARING TREE TAGS WHERE APPROPRIATE.

THIS SURVEY WAS PERFORMED USING A NIKON AND PENTAX  
 TOTAL STATION.

(J)  
 1/4 CORNER SECTIONS 23,24  
 FOUND 2-1/2" COUNTY SURVEYORS BRASS CAP  
 DATED 1958 WITH THE FOLLOWING  
 ACCESSORIES  
 35" x 16" D. FIR SNAG BEARS N75-1/2°E 66.7'  
 (OPEN FACE)  
 12" D. FIR BEARS S31°E 7.0' (HEALED FACE)  
 16" W. FIR BEARS N66°W 32.2' (HEALED FACE)  
 10" D. FIR BEARS S56-1/4°W 18.5' (HEALED FACE)

NEW BT THIS SURVEY  
 12" D. FIR BEARS N13°E 32.8' BLAZED, SCRIBED  
 "1/4 S24 BT"

(K)  
 CE1/16 SECTION 24  
 SET 2-1/2" ALUMINUM CAP ON 5/8" X 30"  
 REBAR, MARKED AS SHOWN  
 WITH THE FOLLOWING ACCESSORIES  
 15" W. FIR BEARS S38°E 25.3' BLAZED,  
 SCRIBED "CE1/16 S24 BT"  
 19" D. FIR BEARS S34°W 20.9' BLAZED,  
 SCRIBED "CE1/16 S24 BT"

- LEGEND
- CALCULATED POSITION NO MONUMENT SET
  - ++++ POSTED LINE AS NOTED IN NARRATIVE
  - [ ] RECORD G.L.O. DATA 1895
  - { } RECORD G.L.O. DATA 1857
  - [ ] RECORD DATA M90-12
  - SET 2-1/2" ALUMINUM CAP ON 5/8" X 30" REBAR CAP MARKED AS SHOWN

REGISTERED  
 PROFESSIONAL  
 LAND SURVEYOR  
*Ronald L. Rice*  
 OREGON  
 JULY 9, 2002  
 RONALD L. RICE  
 54633LS  
 EXPIRES: 12-31-2004

Ward NorthWest, Inc.  
 P.O. BOX 105 FLORENCE, OR 97439  
 (541) 997-9201 FAX: 541-997-3546

FILE NAME		
03-21.TRV		
SCALE	DATE	DRAWN BY
500 Ft/in	6/24/03	RLR
JOB	REVISION	SHEET
03-21		1/1

This map drawn with TRAVERSE PC Software

MAP FILE M142-47

MAP FILE M142-47