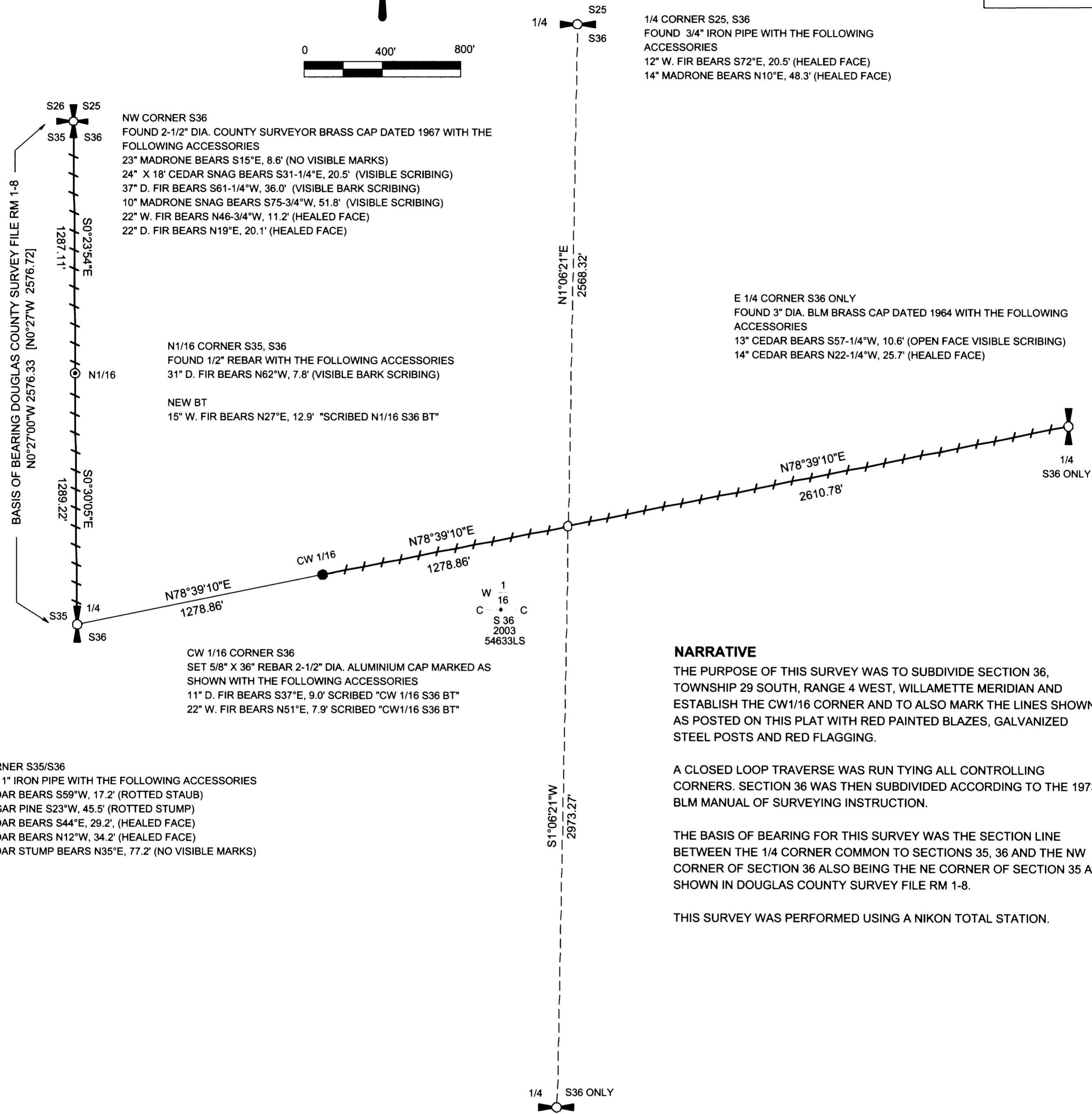


PROPERTY SURVEY  
 FOR: SENECA JONES TIMBER COMPANY  
 NW1/4, NE1/4, SECTION 36, T29S, R4W, W.M.  
 DOUGLAS COUNTY, OREGON  
 24, JUNE 2003

FILED  
 Date: 7/2/2003 By: JP  
 This survey consists of:  
 Map: M142-46  
 Narrative:  
 Corner Rpt:  
 DOUGLAS COUNTY  
 SURVEYOR



**NARRATIVE**

THE PURPOSE OF THIS SURVEY WAS TO SUBDIVIDE SECTION 36, TOWNSHIP 29 SOUTH, RANGE 4 WEST, WILLAMETTE MERIDIAN AND ESTABLISH THE CW1/16 CORNER AND TO ALSO MARK THE LINES SHOWN AS POSTED ON THIS PLAT WITH RED PAINTED BLAZES, GALVANIZED STEEL POSTS AND RED FLAGGING.

A CLOSED LOOP TRAVERSE WAS RUN TYING ALL CONTROLLING CORNERS. SECTION 36 WAS THEN SUBDIVIDED ACCORDING TO THE 1973 BLM MANUAL OF SURVEYING INSTRUCTION.

THE BASIS OF BEARING FOR THIS SURVEY WAS THE SECTION LINE BETWEEN THE 1/4 CORNER COMMON TO SECTIONS 35, 36 AND THE NW CORNER OF SECTION 36 ALSO BEING THE NE CORNER OF SECTION 35 AS SHOWN IN DOUGLAS COUNTY SURVEY FILE RM 1-8.

THIS SURVEY WAS PERFORMED USING A NIKON TOTAL STATION.

1/4 CORNER S35/S36  
 FOUND 1" IRON PIPE WITH THE FOLLOWING ACCESSORIES  
 16" CEDAR BEARS S59°W, 17.2' (ROTTED STAUB)  
 30" SUGAR PINE S23°W, 45.5' (ROTTED STUMP)  
 30" CEDAR BEARS S44°E, 29.2' (HEALED FACE)  
 25" CEDAR BEARS N12°W, 34.2' (HEALED FACE)  
 12" CEDAR STUMP BEARS N35°E, 77.2' (NO VISIBLE MARKS)

CW 1/16 CORNER S36  
 SET 5/8" X 36" REBAR 2-1/2" DIA. ALUMINIUM CAP MARKED AS SHOWN WITH THE FOLLOWING ACCESSORIES  
 11" D. FIR BEARS S37°E, 9.0' SCRIBED "CW 1/16 S36 BT"  
 22" W. FIR BEARS N51°E, 7.9' SCRIBED "CW1/16 S36 BT"

N1/16 CORNER S35, S36  
 FOUND 1/2" REBAR WITH THE FOLLOWING ACCESSORIES  
 31" D. FIR BEARS N62°W, 7.8' (VISIBLE BARK SCRIBING)  
 NEW BT  
 15" W. FIR BEARS N27°E, 12.9' "SCRIBED N1/16 S36 BT"

1/4 CORNER S25, S36  
 FOUND 3/4" IRON PIPE WITH THE FOLLOWING ACCESSORIES  
 12" W. FIR BEARS S72°E, 20.5' (HEALED FACE)  
 14" MADRONE BEARS N10°E, 48.3' (HEALED FACE)

E 1/4 CORNER S36 ONLY  
 FOUND 3" DIA. BLM BRASS CAP DATED 1964 WITH THE FOLLOWING ACCESSORIES  
 13" CEDAR BEARS S57-1/4°W, 10.6' (OPEN FACE VISIBLE SCRIBING)  
 14" CEDAR BEARS N22-1/4°W, 25.7' (HEALED FACE)

S 1/4 CORNER S36 ONLY  
 FOUND 1-1/4" IRON PIPE  
 ORIGINAL BT'S MISSING  
 SECTION CORNER COMMON TO SECTIONS 1, 2  
 T30S, R4W, W.M. MARKED BY A 1-1/4" BENT IRON  
 PIPE BEARS S89°06'25"W, 19.47'  
 SET "T" POST ADJACENT TO BOTH PIPES

**LEGEND**

- [ ] RECORD DATA SURVEY FILE RM 1-8
- SET THIS SURVEY 5/8" X 36" REBAR WITH 2-1/2" ALUMINIUM CAP, MARKED AS SHOWN
- ++++ POSTED LINE AS NOTED IN NARRATIVE
- ⊙ FOUND 1/2" REBAR
- ⊕ FOUND QUARTER CORNER MONUMENT
- ⊗ FOUND SECTION CORNER MONUMENT
- CALCULATED POSITION ONLY

REGISTERED PROFESSIONAL LAND SURVEYOR  
*Ronald L. Rice*  
 OREGON  
 JULY 9, 2002  
 RONALD L. RICE  
 54633LS  
 EXPIRES: 12-31-2004

**Ward NorthWest, Inc.**  
 P.O. BOX 105 FLORENCE, OR 97439  
 (541) 997-9201 FAX: 541-997-3546

FILE NAME		
03-24.TRV	SCALE	DRAWN BY
400 Ft/in	DATE	RLR
JOB	REVISION	SHEET
03-24	---	1/1

This map drawn with TRAVERSE PC Software