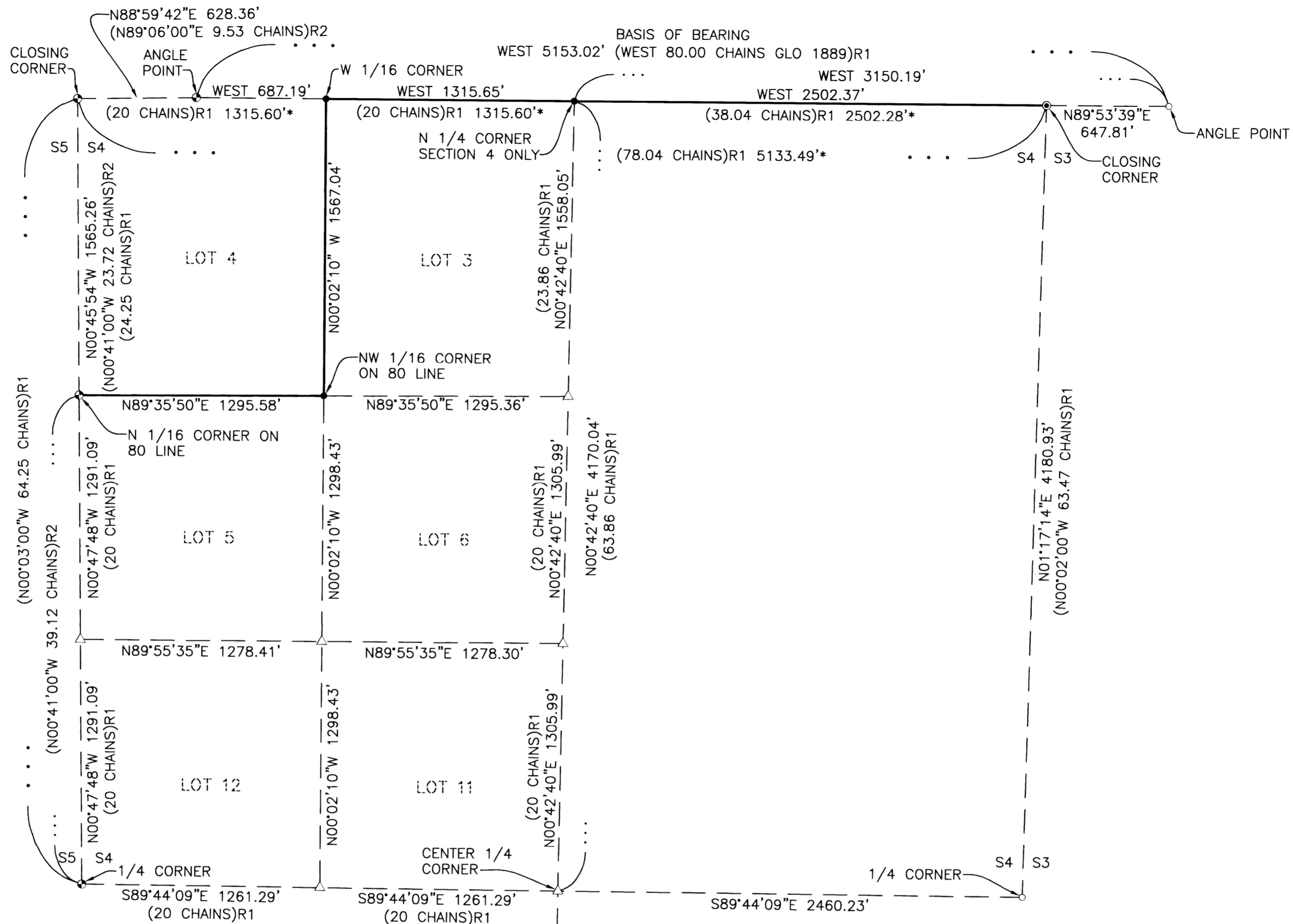


FILED
Date: 6/10/2003 By: JP
This survey consists of:
Map: M 142-36
Narrative:
Corner Rpt: CS 65/45-32 A-M
DOUGLAS COUNTY
SURVEYOR

C.S. File No. 65/45-32 A-M
MAP FILE M 142-36



NOTE:
SEE SEPARATE CORNER NOTES IN
DOUGLAS COUNTY SURVEY RECORDS AS

CS FILE 65/45-32 A THRU M

FIELD CREW: BRUCE WEBSTER AND BLAIN LOVEMARK

EQUIPMENT: NIKON TOTAL STATION AND
HP48 TDS DATA COLLECTOR

OFFICE: JERRY ESTABROOK

DRAFTING: MICHAEL JONES

NARRATIVE:

THE PURPOSE OF THIS SURVEY WAS TO SUBDIVIDE THE NORTHWEST QUARTER OF SECTION 4, TOWNSHIP 31 SOUTH, RANGE 4 WEST, W.M. AND POST AND MARK THE SOUTH AND EAST BOUNDARIES OF LOT 4 AND A PORTION OF THE NORTH BOUNDARY OF SECTION 4 AS SHOWN, FOR FOREST MANAGEMENT. GLO HISTORY OF THE SOUTH BOUNDARY OF TOWNSHIP 30 SOUTH, RANGE 4 WEST WAS SURVEYED IN 1854 AND RESURVEYED IN 1889. TOWNSHIP 30 SOUTH, RANGE 4 WEST WAS SUBDIVIDED IN 1893. THE ORIGINAL SECTION CORNER FOR SECTIONS 33 AND 34 OF TOWNSHIP 30 SOUTH, RANGE 4 WEST AND SECTIONS 3 AND 4 OF TOWNSHIP 31 SOUTH, RANGE 4 WEST, THE ORIGINAL SECTION CORNER FOR SECTIONS 32 AND 33 OF TOWNSHIP 31 SOUTH, RANGE 4 WEST AND SECTIONS 4 AND 5 OF TOWNSHIP 31 SOUTH, RANGE 4 WEST AND THE ORIGINAL QUARTER CORNER COMMON TO SECTION 33 OF TOWNSHIP 30 SOUTH, RANGE 4 WEST AND SECTION 4 OF TOWNSHIP 31 SOUTH, RANGE 4 WEST WERE FOUND OUT OF LIMITS IN THE 1893 GLO SURVEY TO SUBDIVIDE TOWNSHIP 30 SOUTH, RANGE 4 WEST. THEY THEREFORE ESTABLISHED CLOSING CORNERS ON THE TOWNSHIP LINE FOR SECTION 33 AND HELD SAID ORIGINAL SECTION CORNERS AND QUARTER CORNER AS ANGLE POINTS FOR THE TOWNSHIP LINE. TOWNSHIP 31 SOUTH, RANGE 4 WEST WAS SUBDIVIDED IN AN 1894 GLO SURVEY, IN WHICH CLOSING CORNERS FOR SECTION 4 WERE ESTABLISHED ON THE TOWNSHIP LINE BETWEEN SAID ANGLE POINTS. THE PROCEDURE FOR THIS SURVEY WAS THEREFORE AS FOLLOWS: WE TIED THE ORIGINAL NORTHWEST AND NORTHEAST CLOSING CORNERS OF SECTION 4 AND THE ORIGINAL SECTION CORNER COMMON TO SECTIONS 4, 5, 32, AND 33 (NOW AN ANGLE POINT IN THE TOWNSHIP LINE). WE THEN SEARCHED FOR THE ORIGINAL QUARTER CORNER COMMON TO SECTIONS 4 AND 33 AND THE ORIGINAL SECTION CORNER COMMON TO SECTIONS 3, 4, 33, AND 34, AS THESE ARE NOW ANGLE POINTS IN THE TOWNSHIP LINE. IN THE VICINITY OF SAID QUARTER CORNER WE DID NOT FIND ANY EVIDENCE TO ESTABLISH THE ANGLE POINT. IN THE VICINITY OF SAID SECTION CORNER WE FOUND THE ORIGINAL CORNER TREE AND BT'S WITH VISIBLE SCRIBING. WE THEREFORE HELD THIS CORNER POSITION AND THE MONUMENTED ANGLE POINT WHICH WAS ORIGINALLY THE SECTION CORNER COMMON TO SECTIONS 4, 5, 32, AND 33 TO CONTROL THE ALIGNMENT OF THE TOWNSHIP LINE. WE THEN CALCULATED THE PROPORTIONAL POSITIONS FOR THE WEST 1/16 CORNER AND THE NORTH 1/4 CORNER BETWEEN THE NORTHWEST AND NORTHEAST CLOSING CORNERS OF SECTIONS 4. WE THEN ADJUST THESE PROPORTIONAL POSITIONS NORTH TO THE TOWNSHIP LINE. WE THEN TIED THE MONUMENTED POSITIONS FOR THE WEST, EAST, AND SOUTH QUARTER CORNERS AND THE NORTH 1/16 CORNER ON THE 80 LINE ON THE WEST BOUNDARY LINE OF SECTION 4. WE THEN SUBDIVIDED SECTION 4 AS SHOWN.

LEGEND

- SET MONUMENT AS NOTED IN CORNER NOTES
- FOUND CORNER AS NOTED
- ⊙ FOUND BRASS CAP AS NOTED
- ⊙ FOUND ALUMINUM CAP AS NOTED
- △ CALCULATED POSITION
- () R1 RECORD AS PER GLO
- () R2 RECORD AS PER BLM
- PROPERTY LINES POSTED WITH IRON FENCE POST AND MARKED WITH RED BLAZES AND RED FLAGGING
- * RECORD GLO AND PROPORTIONED DISTANCES USED FOR LOTTING, CORNERS WERE ADJUSTED TO TOWNSHIP LINE.



0' 250' 500' 1000'
SCALE: 1" = 500'

<p>REGISTERED PROFESSIONAL LAND SURVEYOR</p> <p><i>Jerry Lee Estabrook</i></p> <p>OREGON JUNE 30, 1995 JERRY LEE ESTABROOK 2703</p> <p>EXPIRES: 12/31/2003</p>	<p>SURVEY</p> <p>LOCATED IN THE NW 1/4 OF SECTION 4, TOWNSHIP 31 SOUTH, RANGE 4 WEST, WILLAMETTE MERIDIAN, DOUGLAS COUNTY, OREGON</p>	
	<p>SURVEYED FOR: ROSEBURG RESOURCES CO. P.O. BOX 1088 ROSEBURG, OR 97470</p>	<p>SURVEYED BY: i.e. ENGINEERING</p> <p>741 SE Jackson Street Roseburg, Oregon 97470 PHONE (541) 673-0166 FAX (541) 440-9392 iemail@ieengineering.com</p>
<p>SCALE: AS SHOWN</p>	<p>DATE: MAY, 2003</p>	<p>DWG. BY: MLJ</p> <p>JOB NO: 774-04</p> <p>PAGE: 1 OF 1</p>

C.S. File No. 65/45-32 A-M
MAP FILE M 142-36