

FILED
 Date: 6/5/2003 By: JP
 This survey consists of:
 Map: M142-32
 Narrative:
 Corner Rpt:

DOUGLAS COUNTY
 SURVEYOR

BOUNDARY SURVEY
 LOCATED IN SECTION 28, T.29S., R.4W., W.M.,
 DOUGLAS COUNTY, OREGON

SURVEY FOR:

SENECA JONES TIMBER COMPANY
 P.O. BOX 2129
 ROSEBURG, OR 97470

SURVEY BY:

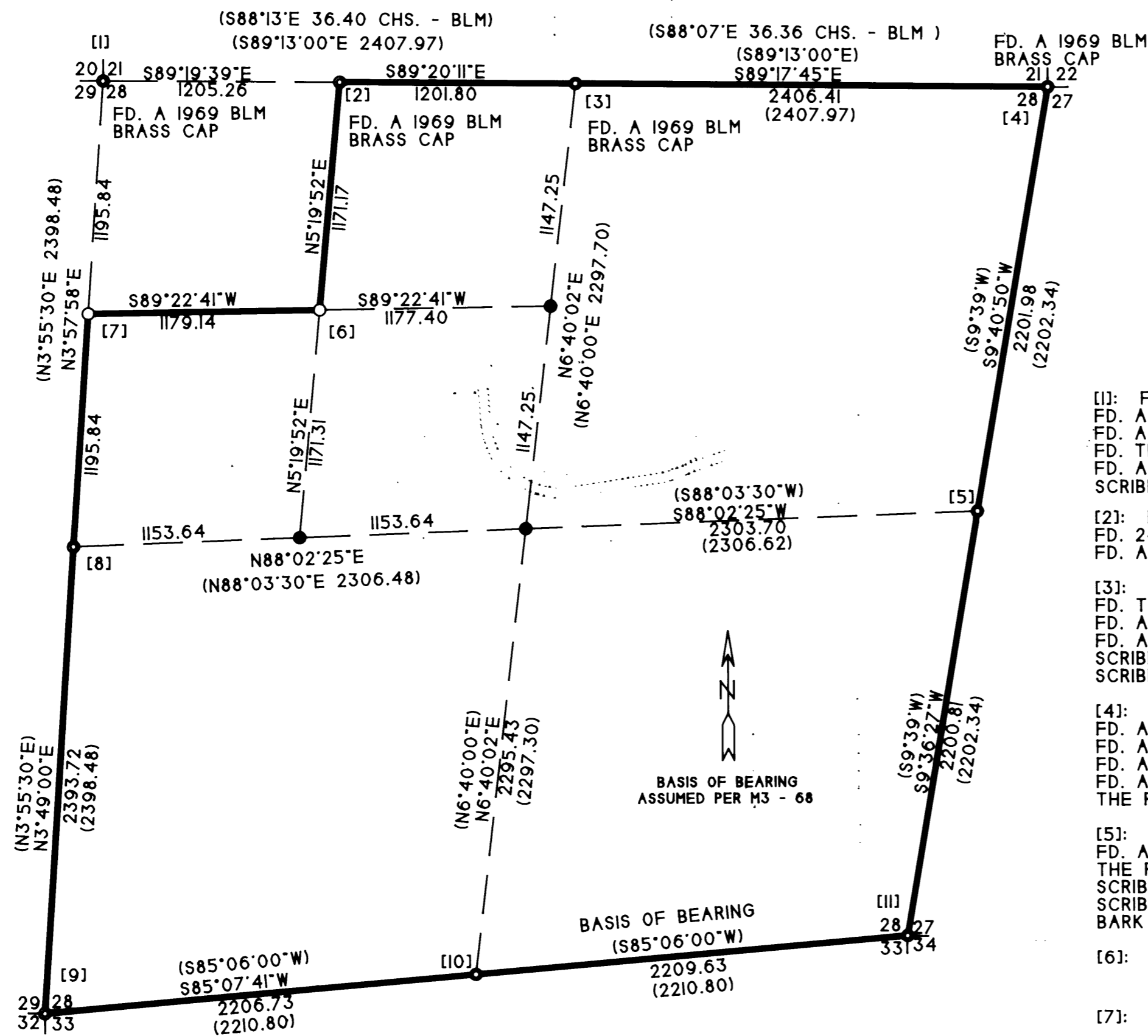
MULKINS & RAMBO, LLC
 P.O. BOX 809
 NORTH BEND, OR 97459

REGISTERED
 PROFESSIONAL
 LAND SURVEYOR

Troy Rambo
 OREGON
 JULY 14, 1998
 TROY J. RAMBO
 2865

EXPIRES 12-31-04

MAY 16, 2003
 SCALE 1" = 600'



CORNER NOTES

- [1]: FD. A 1969 BLM BRASS CAP FROM WHICH:
 FD. AN 11" MADRONE WITH A HEALED FACE - BEARS N58°E. 10 1/2 lks.
 FD. AN 8" MADRONE WITH A HEALED FACE - BEARS S8°E. 45 1/2 lks.
 FD. THE RECORD 8" DF - BEARS S73 1/2"W. 79 lks. - NOW A LOW STUMP
 FD. A 9" MADRONE WITH A HEALED FACE - BEARS N15 3/4"W. 64 lks.
 SCRIBED "S28 BT" ON AN 8" DF - BEARS S52°E. 23.3 FT.
- [2]: FD. A 1969 BLM BRASS CAP FROM WHICH:
 FD. 24" DF WITH A HEALED FACE - BEARS S72 3/4"E. 73 1/2 lks.
 FD. A 17" DF WITH A HEALED FACE - BEARS N32 3/4"E. 42 1/2 lks.
- [3]: FD. A 1969 BLM BRASS CAP FROM WHICH:
 FD. THE RECORD 36" DF STUMP - BEARS S3°E. 40 lks.
 FD. A 17" MADRONE WITH A ROTTEN FACE - BEARS N46°W. 235 lks.
 FD. A 25" DF WITH A HEALED FACE - BEARS N51 3/4"E. 153 lks.
 SCRIBED "1/4 S28 BT" ON A 9" DF - BEARS S87°W. 28.6 FT.
 SCRIBED "1/4 S28 BT" ON A 9" DF - BEARS S52°E. 20.3 FT.
- [4]: FD. A 1969 BLM BRASS CAP FROM WHICH:
 FD. A 48" DF STUMP WITH VISIBLE BARK SCRIBES - BEARS S37 1/4"E. 61 lks.
 FD. A 24" DF WITH A HEALED FACE - BEARS N70°E. 102 lks.
 FD. A 21" GRAND FIR WITH A HEALED FACE - BEARS S35°W. 34 lks.
 FD. A 44" DF WITH VISIBLE BARK SCRIBES - BEARS N30 1/2"W. 102 lks.
 THE RECORD 17" GRAND FIR S79 1/2"W. 36 lks. - UPROOTED
- [5]: FD. A 1" IRON PIPE FROM WHICH:
 FD. A 35" DF WITH A HEALED FACE - BEARS S58°E. 9.2 FT.
 THE RECORD 26" DF N31°W. 103 FT. - UPROOTED
 SCRIBED "1/4 S28 BT" ON A 17" DF - BEARS N13°W. 13.0 FT.
 SCRIBED "1/4 S28 BT" ON A 19" INCENSE CEDAR - BEARS S84°W. 21.7 FT.
 BARK SCRIBED "1/4 S27 BT" ON AN 18" DF - BEARS S3°E. 34.9 FT.
- [6]: SCRIBED "NW1/16 BT" ON AN 8" DF - BEARS N30°W. 5.7 FT.
 SCRIBED "NW1/16 BT" ON A 10" DF - BEARS N67°E. 11.9 FT.
- [7]: SCRIBED "N1/16 BT" ON A 20 MADRONE - BEARS N16°E. 37.6 FT.
 BARK SCRIBED "N1/16 BT" ON A 36" DF - BEARS N26°W. 41.6 FT.
- [8]: FD. A 1" IRON PIPE FROM WHICH:
 FD. A 26" INCENSE CEDAR WITH A HEALED FACE - BEARS N68°E. 9.0 FT.
 FD. A 15" INCENSE CEDAR WITH A HEALED FACE - BEARS S34°W. 46.9 FT.
 SCRIBED "1/4 S29 BT" ON AN 8" DF - BEARS N21°W. 11.4 FT.
 SCRIBED "1/4 S28 BT" ON A 17" INCENSE CEDAR - BEARS S16°E. 23.8 FT.
- [9]: FD. A 1" IRON PIPE FROM WHICH:
 FD. A 42" INCENSE CEDAR WITH A HEALED FACE - BEARS N60 1/2"E. 69.4 FT.
 FD. A 31" DF WITH A HEALED FACE - BEARS N42 1/2"W. 36.3 FT.
 THE OTHER RECORD BT'S ARE NOW STUMPS
 SCRIBED "S32 BT" ON A 14" INCENSE CEDAR - BEARS S79°W. 6.1 FT.
 SCRIBED "S33 BT" ON A 6" GRAND FIR - BEARS S52°E. 13.2 FT.
- [10]: FD. A 1" IRON PIPE FROM WHICH:
 FD. A ROTTEN CEDAR STUMP WITH VISIBLE SCRIBES - BEARS S53°E. 22.5 FT.
 FD. A 22" DF WITH A HEALED FACE - BEARS N22 1/2"E. 48.9 FT.
 SCRIBED "1/4 S28 BT" ON A 13" GRAND FIR - BEARS N62°W. 5.1 FT.
 SCRIBED "1/4 S33 BT" ON A 10" DF - BEARS N88°E. 36.0 FT.
 SCRIBED "1/4 S33 BT" ON A 15" DF - BEARS S38°E. 16.4 FT.
 SCRIBED "1/4 S33 BT" ON AN 8" DF - BEARS S55°W. 27.9 FT.
- [III]: FD. A 1" IRON PIPE FROM WHICH:
 FD. A 48" INCENSE CEDAR WITH A HEALED FACE - BEARS S47°W. 17.8 FT.
 FD. A 45" DF WITH A HEALED FACE - BEARS N60°E. 59.4 FT.
 FD. A ROTTEN GRAND FIR SNAG WITH A HEALED FACE - BEARS N16°W. 27.0 FT.
 THE RECORD 32" DF BEARING S60°E. 16.5 FT. - NOW A LOW STUMP
 SCRIBED "S27 BT" ON A 14" DF - BEARS N44°E. 26.5 FT.
 SCRIBED "S34 BT" ON A 10" INCENSE CEDAR - BEARS S85°E. 12.6 FT.

LEGEND

- ⊙ FD. A 1" IRON PIPE PER M3 - 68
UNLESS OTHERWISE NOTED
- SET A 5/8" X 36" REBAR WITH A
2 1/2" ALUM. CAP
- CALCULATED POSITION
- LINES FLAGGED, BLAZED, AND MARKED
WITH 5 1/2" AND 6" STEEL POSTS
- () RECORD BEARING/DISTANCE PER M3 - 68
UNLESS OTHERWISE NOTED
- [] CORNER REFERENCE NUMBER

NARRATIVE

THE PURPOSE OF THIS SURVEY WAS TO ESTABLISH THE BOUNDARIES AS SHOWN FOR FUTURE FOREST OPERATIONS.
 CONTROL FOR THIS SURVEY WAS BASED ON M3 - 68 AND THE 1969 DEPENDENT RESURVEY. PORTION OF SUBDIVISIONAL LINES, T.29S., R.4W., W.M., OREGON.
 ALL NEW BEARING TREES WERE MEASURED TO A 6" SPIKE AT SIDE CENTER BASE. BEARINGS WERE MEASURED WITH A HAND COMPASS WITH A DECLINATION OF 17° EAST.
 THE FIELD WORK WAS PERFORMED BETWEEN APRIL 21 AND MAY 15, 2003 BY TROY RAMBO, CLYDE MULKINS, AND JOSH WALLMAN.

MAP FILE M142-32

MAP FILE M142-32