

MAP FILE M142-2

**NARRATIVE:**

THE PURPOSE OF THIS SURVEY WAS TO DELINEATE THE BOUNDARY LINE COMMON TO SECTION 19 AND SECTION 24, BETWEEN THE COMMON 1/4 CORNER AND THE COMMON N1/16 CORNER OF SAID SECTIONS. THE PROCEDURE WAS AS FOLLOWS: WE RAN A CLOSED LOOP TRAVERSE BETWEEN THE 1/4 CORNER COMMON TO SAID SECTIONS AND THE SECTION CORNER COMMON TO SECTIONS 13, 18, 19, AND 24. WE THEN ESTABLISHED A MONUMENT FOR THE NORTH 1/16 CORNER AT THE MIDPOINT BETWEEN SAID 1/4 CORNER AND SAID SECTION CORNER. WE THEN MARKED THE BOUNDARY LINE FROM SAID 1/4 CORNER TO SAID N1/16 CORNER WITH RED FLAGGING, IRON FENCE POSTS AND TREE BLAZING.

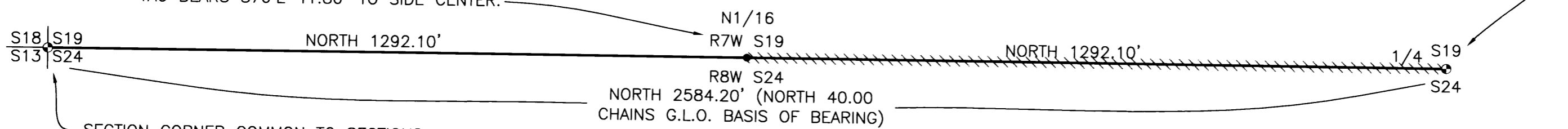
FILED

Date: 4/18/2003 By: JP  
This survey consists of:  
Map: M142-2  
Name: \_\_\_\_\_  
Corner Ept: \_\_\_\_\_

1/4 CORNER COMMON TO SECTIONS 19 AND 24  
FOUND MONUMENT:  
A 2 1/2" BRASS CAP ON 1" IRON PIPE MARKED "T32S, R7W, R8W, 1/4, S19, S24, 1967".  
FOUND BT'S:  
A 30" PINE SNAG WITH TAG BEARS S70°E 46.20' TO FACE, ORIGINAL.  
A 36" FIR STAMPED WITH TAG BEARS N85°W 28.40' TO FACE, ORIGINAL.  
A 21" FIR WITH HEALED FACE AND TAG BEARS N24°30"E 27.70', CS 54/36.  
A 12" PINE WITH HEALED FACE AND TAG.  
BT'S MARKED:  
A 7" FIR WITH FACE SCRIBED "BT" WITH X CHOP AND TAG BEARS N51°W 14.80' TO SIDE CENTER.  
A 12" MADRONE FACE SCRIBED "T32S, R7W, S19, W1/4, BT" BEARS S58°E 20.50' TO SIDE CENTER.

NORTH 1/16 CORNER COMMON TO SECTIONS 19 AND 24 SET MONUMENT:  
A 2 1/2" ALUMINUM CAP ON 5/8"x30" IRON ROD, MARKED "T32S, R7W, R8W, N1/16, S19, S24 2003, LS2703".  
BT'S MARKED:  
AN 8" FIR FACE SCRIBED "T32S R8W S24 BT" AND TAG BEARS S24°W 33.70' TO SIDE CENTER.  
A 32" FIR WITH FACE SCRIBED "T32S R7W S 19 BT" AND TAG BEARS S70°E 41.80' TO SIDE CENTER.

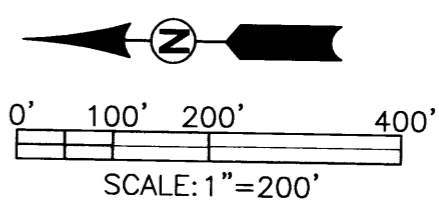
**FIELD CREW:** BRUCE WEBSTER AND BLAINE LOVEMARK  
**EQUIPMENT:** NIKON TOTAL STATION AND HP48/TDS DATA COLLECTOR  
**OFFICE:** JERRY ESTABROOK  
**DRAFTING:** MICHAEL JONES



SECTION CORNER COMMON TO SECTIONS 13, 18, 19, AND 24 FOUND MONUMENT:  
A 3 1/4" BRASS CAP ON 1" IRON PIPE MARKED "T32S, R8W, R7W, S13, S18, S19, S24, 1958".  
FOUND BT'S:  
A 16" MADRONE WITH ROTTEN FACE AND TAG BEARS N30°E 50.10' (53.46' ORIGINAL).  
A 29" FIR WITH HEALED FACE AND TAG BEARS S55°W 14.80' (15.18' ORIGINAL).  
A 14" LIVE OAK WITH VISIBLE SCRIBE AND TAG BEARS N55°W 49.90' (53.46' ORIGINAL).  
A 24" FIR WITH HEALED FACE AND TAG BEARS N19°E 56.10', THIELSEN 1958.  
A 23" FIR WITH HEALED FACE AND TAG BEARS S72°30'W 49.50', THIELSEN 1958.  
A 24" FIR WITH HEALED FACE AND TAG BEARS N74°W 31.00', THIELSEN 1958.

**LEGEND**

- SET MONUMENT AS NOTED
- FOUND MONUMENT AS NOTED
- ▨ BOUNDARY LINE MARKED WITH FLAGGING, IRON FENCE POST AND TREE BLAZING.



<b>REGISTERED PROFESSIONAL LAND SURVEYOR</b> <i>Jerry Lee Estabrook</i> <b>OREGON</b> JUNE 30, 1995 <b>JERRY LEE ESTABROOK</b> 2703 EXPIRES: 12/31/2003	<b>SURVEY</b> LYING IN THE NE 1/4 OF SEC. 24 AND THE NW 1/4 OF SEC. 19, T32S, R8 & 7W, WILLAMETTE MERIDIAN, DOUGLAS COUNTY, OREGON	
	<b>SURVEYED FOR:</b> ROSEBURG RESOURCES CO. P.O. BOX 1088 ROSEBURG, OR 97470	<b>SURVEYED BY:</b> <b>i.e.</b> ENGINEERING 741 SE Jackson Street Roseburg, Oregon 97470 PHONE (541) 673-0166 FAX (541) 440-9392 iemail@ieengineering.com
SCALE: AS SHOWN	DATE: APRIL, 2003	DWG. BY: MLJ JOB NO: 774-03 PAGE: 1 OF 1

MAP FILE M142-2