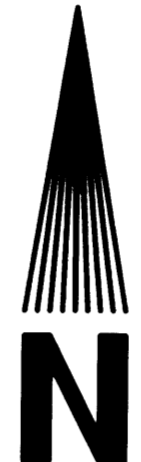


MAP FILE M141-69

FILED
Date: 3/12/2003 By: JP
This survey consists of:
Map: M141-69
Name: _____
Corner: _____
DOUGLAS COUNTY
SURVEYOR

RECORD OF SURVEY
LOCATED IN
SECTION 34, T21S, R6W, W.M.
DOUGLAS COUNTY, OREGON
FOR
SENECA - JONES TIMBER COMPANY
BY
ROBERTS SURVEYING INC.
P.O. BOX 7155
EUGENE, OREGON 97401
PHONE (541) 345-1112
MARCH 3, 2003

REGISTERED
PROFESSIONAL
LAND SURVEYOR
Ted C. Baker
OREGON
JULY 25, 1991
TED C. BAKER
2488
EXPIRES 12-31-03



SCALE: 1" = 400'

LEGEND

- MONUMENTS FOUND IN M 118-39 AND USED IN THIS SURVEY UNLESS OTHERWISE NOTED
- MONUMENTS SET: 5/8" X 36" IRON PIN WITH 1-1/2" ALUMINUM CAP MARKED AS SHOWN
- △ COMPUTED POINT
- () DATA OF RECORD
- LINE MARKED WITH FENCE POSTS/RED RIBBON & BLAZES

REFERENCES

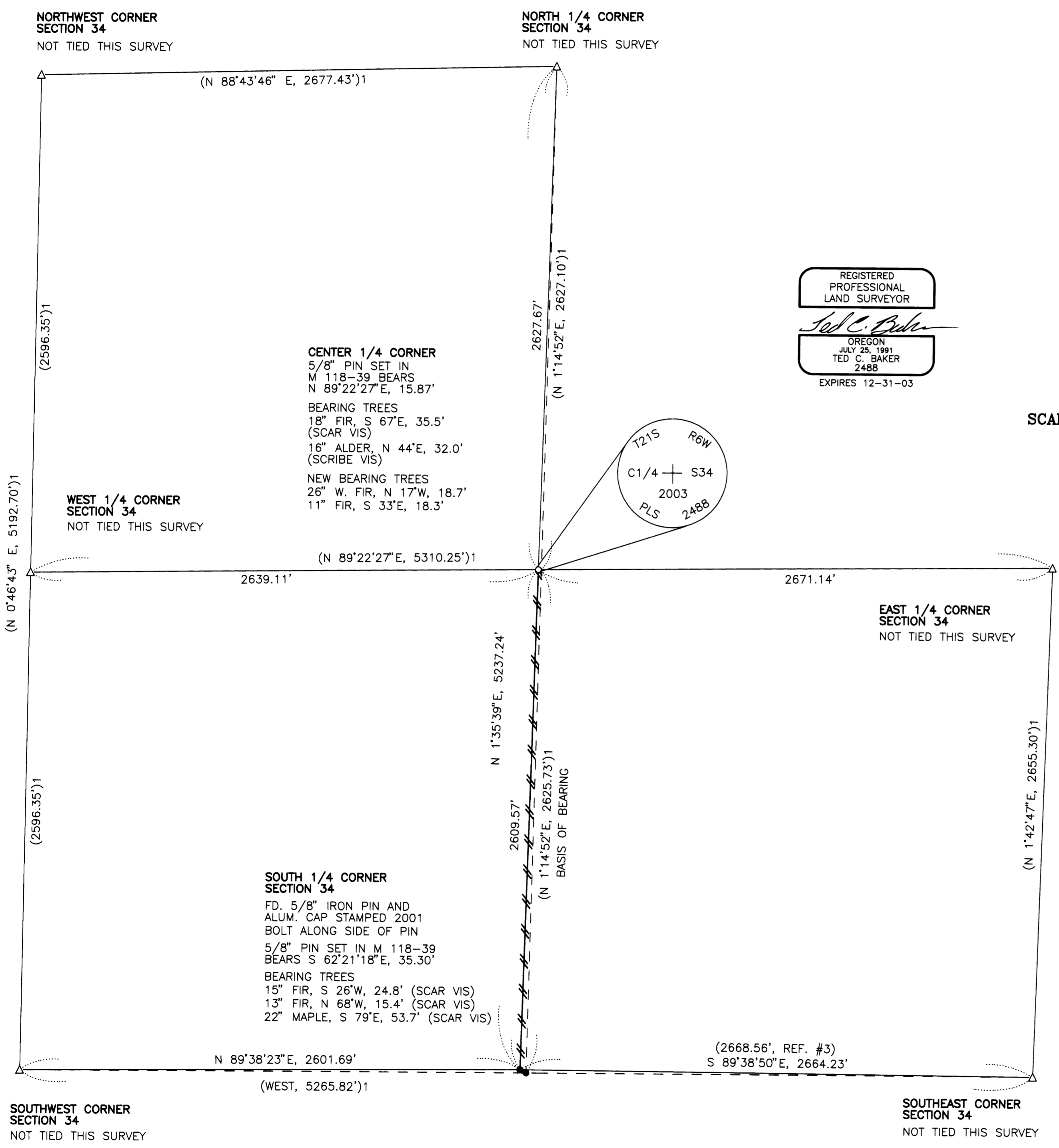
- () 1 M 118-39 BY ROBERTS DATED FEBRUARY 10, 1994.
- () 2 PLAT OF SUNNYDALE ORCHARDS, PLAT VOL. 5, PAGES 20 A & B, BY SCROGGIN DATED AUGUST 6, 1914.
- () 3 H.E.1 - SURVEY BY HAINES DATED 1965.

NOTE

MEASURED BEARING AND DISTANCE SAME AS DATA OF RECORD UNLESS OTHERWISE NOTED.

NARRATIVE

THE PURPOSE OF THIS SURVEY IS TO CORRECT A PREVIOUS SURVEY MADE BY THIS OFFICE FOR SENECA TIMBER COMPANY DATED FEBRUARY 10, 1994 AND FILED IN DOUGLAS COUNTY SURVEYORS OFFICE AS M 118-39. THE SOUTH 1/4 CORNER OF SECTION 34 WAS PROPORTIONED BETWEEN THE SOUTHEAST AND SOUTHWEST CORNER IN SAID M 118-39. IN 2001 A DOUGLAS COUNTY RE-MONUMENTATION CREW FOUND A BOLT AT SAID SOUTH 1/4 CORNER AS SHOWN IN A 1914 SURVEY OF SUNNYDALE ORCHARDS. WE CALCULATED THE DIFFERENCES IN LOCATION BETWEEN THE BOLT AND THE SOUTH 1/4 CORNER SET IN M 118-39 AND RE-CALCULATED THE NORTH-SOUTH CENTERLINE AND EAST-WEST CENTERLINE USING RECORD DATA FROM SAID M 118-39. THE 5/8" IRON PINS SET IN M 118-39 AT THE SOUTH 1/4 CORNER AND CENTER 1/4 CORNER REMAINED IN THE SAME LOCATION BUT WERE LOWERED APPROXIMATELY 0.5 FEET BELOW THE SURFACE OF THE GROUND.



MAP FILE M141-69