

BOUNDARY LINE SURVEY
 LOCATED IN SECTION 28, T.21 S., R.9 W., W.M.,
 DOUGLAS COUNTY, OREGON

FILED
 Date: 2/21/2003 By: LP
 This Survey consists of:
 Map: M141-61
 Name:
 Corner Rpt:
 DOUGLAS COUNTY
 SURVEYOR

SURVEY FOR:

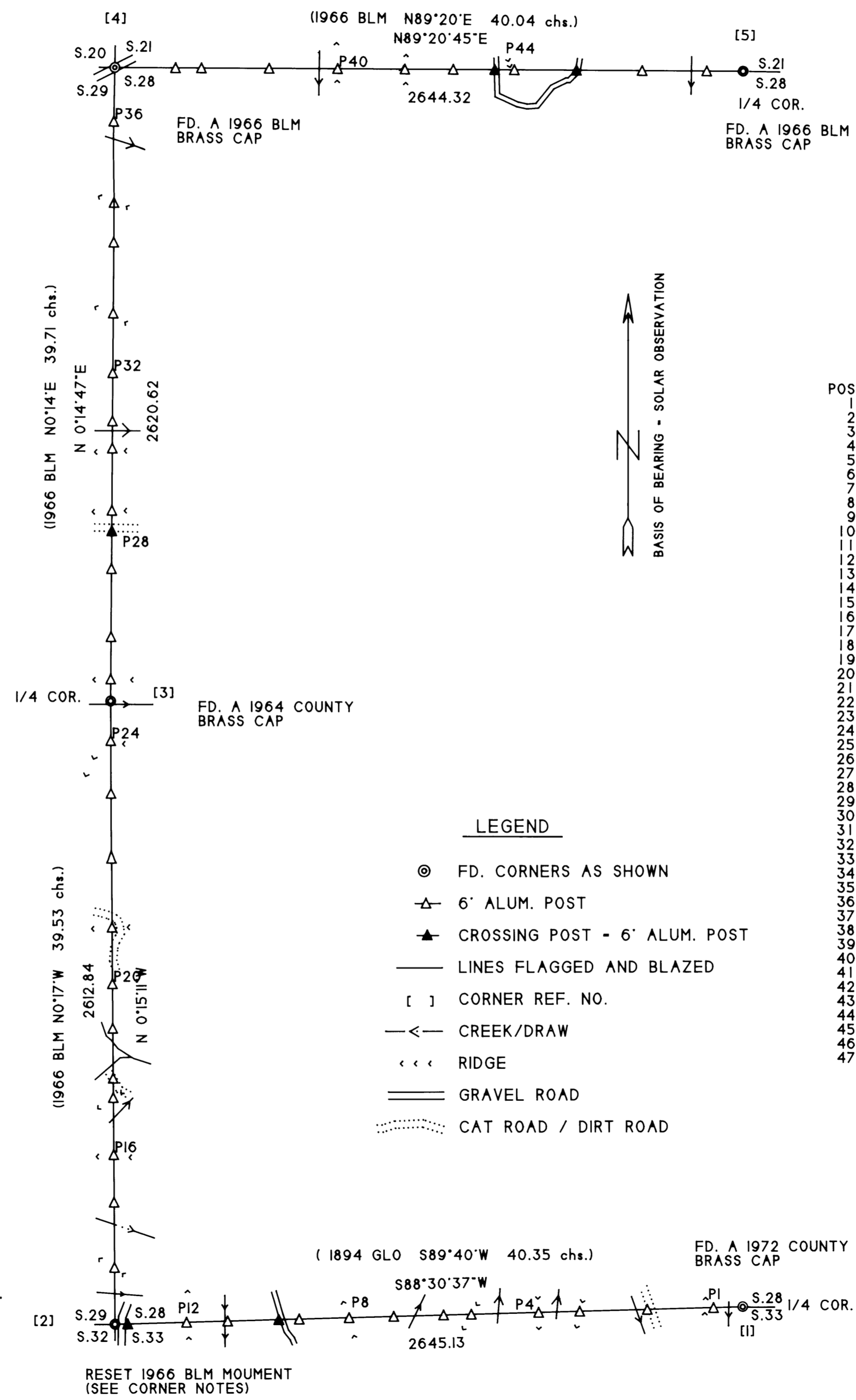
IP TIMBERLANDS OPERATING CO., LTD
 711 PORT DOCK ROAD
 REEDSPORT, OR. 97467

SURVEY BY:

CLYDE F. MULKINS
 TIMBER CRUISING & ENGINEERING
 P.O. BOX 750
 COOS BAY, OR. 97420



MAP FILE M141-61



POST	DIR.	DIST.
1	W	2522
2	W	2243
3	W	1958
4	W	1785
5	W	1502
6	W	1385
7	W	1174
8	W	986
9	W	776
10	W	690
11	W	475
12	W	302
13	W	54
14	N	2372
15	N	2098
16	N	1897
17	N	1657
18	N	1575
19	N	1364
20	N	1176
21	N	936
22	N	646
23	N	388
24	N	166
25	N	2528
26	N	2350
27	N	2065
28	N	1906
29	N	1820
30	N	1557
31	N	1442
32	N	1239
33	N	987
34	N	688
35	N	520
36	N	225
37	N	2389
38	N	2280
39	N	1995
40	N	1707
41	N	1424
42	N	1220
43	N	1046
44	N	963
45	N	702
46	N	425
47	N	153

POSTING NOTES		REFERENCE	DIST
TO	TREE	BEARS	
SW SEC	20" HEMLOCK	S50°W	16.9
-	13" ALDER	S89°E	19.6
-	10" HEMLOCK	N77°E	4.1
-	15" HEMLOCK	S19°E	7.0
-	8" HEMLOCK	N43°W	8.2
-	75" DF STUMP	S74°W	11.1
-	11" MAPLE	S57°W	3.5
-	9" CHINQUAPIN	S17°E	11.5
-	5" DF	EAST	5.5
-	11" DF	N07°W	12.4
-	20" DF	S35°E	33.0
-	12" DF	N86°W	12.2
-	29" MAPLE	S06°W	14.7
W 1/4	17" DF	S41°W	5.2
-	25" DF	N68°E	20.4
-	7" DF	N03°E	22.4
-	13" MAPLE	N39°E	9.2
-	26" HEMLOCK	N53°E	11.6
-	15" ALDER	S80°E	15.2
-	20" DF	N87°E	17.3
-	14" DF	N28°E	9.0
-	23" HEMLOCK	N82°W	45.7
-	13" DF	S10°E	2.5
-	17" HEMLOCK	N06°E	5.0
NW SEC	18" HEMLOCK	N46°E	5.4
-	15" HEMLOCK	N71°E	10.9
-	15" DF	S77°W	10.6
-	14" DF	S64°W	9.7
-	25" DF	N01°E	3.2
-	15" DF	S15°E	6.4
-	12" DF	S67°W	14.4
-	24" DF	S15°W	1.8
-	12" DF	N13°E	1.7
-	19" DF	S86°E	7.3
-	17" HEMLOCK	N77°E	7.9
-	26" DF	S61°W	23.3
N 1/4	16" DF	N59°E	7.4
-	12" DF	N20°W	9.1
-	15" DF	S37°E	14.6
-	17" DF	S49°E	20.5
-	15" DF	N58°W	10.7
-	14" DF	S66°E	9.0
-	13" HEMLOCK	N79°W	4.0
-	19" HEMLOCK	S52°W	8.9
-	21" HEMLOCK	S59°E	11.2
-	17" DF	S87°E	2.1
-	13" HEMLOCK	N38°W	23.2

LEGEND

- ⊙ FD. CORNERS AS SHOWN
- △ 6" ALUM. POST
- ▲ CROSSING POST - 6" ALUM. POST
- LINES FLAGGED AND BLAZED
- [] CORNER REF. NO.
- CREEK/DRAW
- <<< RIDGE
- == GRAVEL ROAD
- CAT ROAD / DIRT ROAD

CORNER NOTES

CORNER #1: FD. A 1972 COUNTY BRASS CAP AT THE 1/4 CORNER BETWEEN SECTIONS 28 AND 33, FROM WHICH: FD. A BURNED AND ROTTEN 12" DF STUMP WITH VISIBLE SCRIBES BEARS S67 1/2"E, 11.9 FT.; FD. A 14" BURNED AND DEAD DF WITH A HEALED FACE BEARS S39°E, 24.0 FT.; FD. AN 18" HEMLOCK SNAG WITH A HEALED FACE BEARS N23 1/2"E, 18.0 FT.; 1 SET A 5/8" X 30" REBAR WITH PLASTIC CAP MKD. LS2006 BEARS S49°43'08"E, 34.38 FT.; 1 SET A 5" STEEL FENCE POST BEARS N19°W, 8.7 FT.; 1 SET A 5" STEEL FENCE POST BEARS S12°W, 12.7 FT.

CORNER #2: 1 RESET A 1966 BLM MONUMENT (MONUMENT WAS MOVED IN LAND SLIDE) AT THE CORNER OF SECTIONS 28, 29, 32, AND 33, FROM WHICH: FD. ORIG. 29" MAPLE, FACE BURIED, BEARS S72°E, 52.1 FT. (RECORD S73 1/4"E, 79 lks.); FD. A 34" MAPLE WITH A HEALED FACE BEARS S35°W, 40.3 FT. (RECORD S33°W, 61 lks.); FD. ORIG. 90° DF WITH SCRIBES (OPENED UP FACE) BEARS N33°W, 37.6 FT. (RECORD N33 3/4"W, 57 lks.); FD. A DOUGLAS COUNTY BRASS CAP (WITNESS CORNER) BEARS N89°47'36"W, 54.44 FT. (RECORD WEST, 55.0 FT.)

CORNER #3: FD. A 1964 COUNTY BRASS CAP AT THE 1/4 CORNER BETWEEN SECTIONS 28 AND 29 FROM WHICH: FD. A 33" DF WITH A HEALED FACE BEARS N54°E, 34.6 FT. (RECORD N53 1/4"E, 50 lks.); FD. A 42" HEMLOCK WITH A HEALED FACE BEARS S48 1/2"W, 58.1 FT.; 1 SCRIBED 1/4 S28 BT ON A 22" HEMLOCK BEARS S50°E, 46.0 FT.; 1 BARK SCRIBED 1/4 S29 BT ON AN 11" ALDER BEARS S28°W, 32.0 FT. CORNER FALLS 10 FT. NORTH OF CREEK.

CORNER #4: FD. A 1966 BLM BRASS CAP AT THE CORNER OF SECTIONS 20, 21, 28, AND 29 FROM WHICH: FD. A 13" ALDER WITH VISIBLE BARK SCRIBES BEARS N16 1/2"E, 68 lks.; FD. A 19" DF WITH A HEALED FACE BEARS S61°E, 126 lks.; FD. A 24" HEMLOCK WITH A HEALED FACE BEARS S27 1/4"W, 246 lks.; FD. A 20" DF WITH A HEALED FACE BEARS N49 1/2"W, 136 lks. CORNER FALLS IN THE CENTER OF A GRAVEL ROAD. CORNER IS BURIED APPROX. 2 FT. DEEP. 1 SET A 6" SPIKE OVER THE FD. BRASS CAP.

CORNER #5: FD. A 1966 BLM BRASS CAP AT THE 1/4 CORNER BETWEEN SECTIONS 21 AND 28 FROM WHICH: FD. THE REMAINS OF THE ORIGINAL HEMLOCK STUMP (NO MARKS REMAINING) BEARS S33 1/2"W, 15 lks.; FD. A 15" DF WITH A HEALED FACE BEARS N73 1/2"E, 179 lks.; FD. A 32" HEMLOCK WITH A HEALED FACE BEARS S10°E, 242 lks.; FD. A 21" DF WITH A HEALED FACE (ORIGIN UNKNOWN) BEARS S54°E, 29.0 FT.; 1 SCRIBED 1/4 S21 BT ON A 21" DF BEARS N15°W, 13.5 FT. CORNER FALLS APPROX. 50' WEST OF OLD ROAD.

NARRATIVE

THE PURPOSE OF THIS SURVEY WAS TO MARK THE PROPERTY LINES AS SHOWN FOR FOREST MANAGEMENT OPERATIONS. RECORD SURVEYS USED FOR THIS SURVEY WERE: GLO SUBDIVISION NOTES OF T.21 S., R.9 W., PAGES 955 THRU 958; 1966 BLM DEPENDENT RESURVEY, PORTION OF SUBDIVISIONAL LINES, T.21 S., R.9 W., PAGES 14249 THRU 14251; DOUGLAS COUNTY CORNER RENEWALS 19 AND 25 T.21 S., R.9 W. THE FIELD WORK WAS PERFORMED BETWEEN JANUARY 9 AND FEBRUARY 9, 1996. ASSISTING ME WITH THIS SURVEY WERE TROY RAMBO AND RANDY MADDEN. A TOPCON GTS-301 TOTAL STATION WAS USED FOR TRAVERSING.

SCALE 1" = 400'
 FEBRUARY 12, 1996

MAP FILE M141-61