

MAP FILE M141-5

REGISTERED PROFESSIONAL LAND SURVEYOR

Kristian O. Degroot
OREGON JULY 17, 1981
KRISTIAN O. DEGROOT 1941

RENEWAL DATE: 12-31-03

FILED
Date: 10/11/2002 By: JP
This survey consists of:
Map: M141-5
Name:
Corner Rpt:
DOUGLAS COUNTY SURVEYOR

RECORD OF SURVEY

LOT 9, BLOCK 3, CHADWICK ADDITION

NW 1/4, SECTION 19, T.27S., R.5W., W.M.

CITY OF ROSEBURG

DOUGLAS COUNTY, OREGON

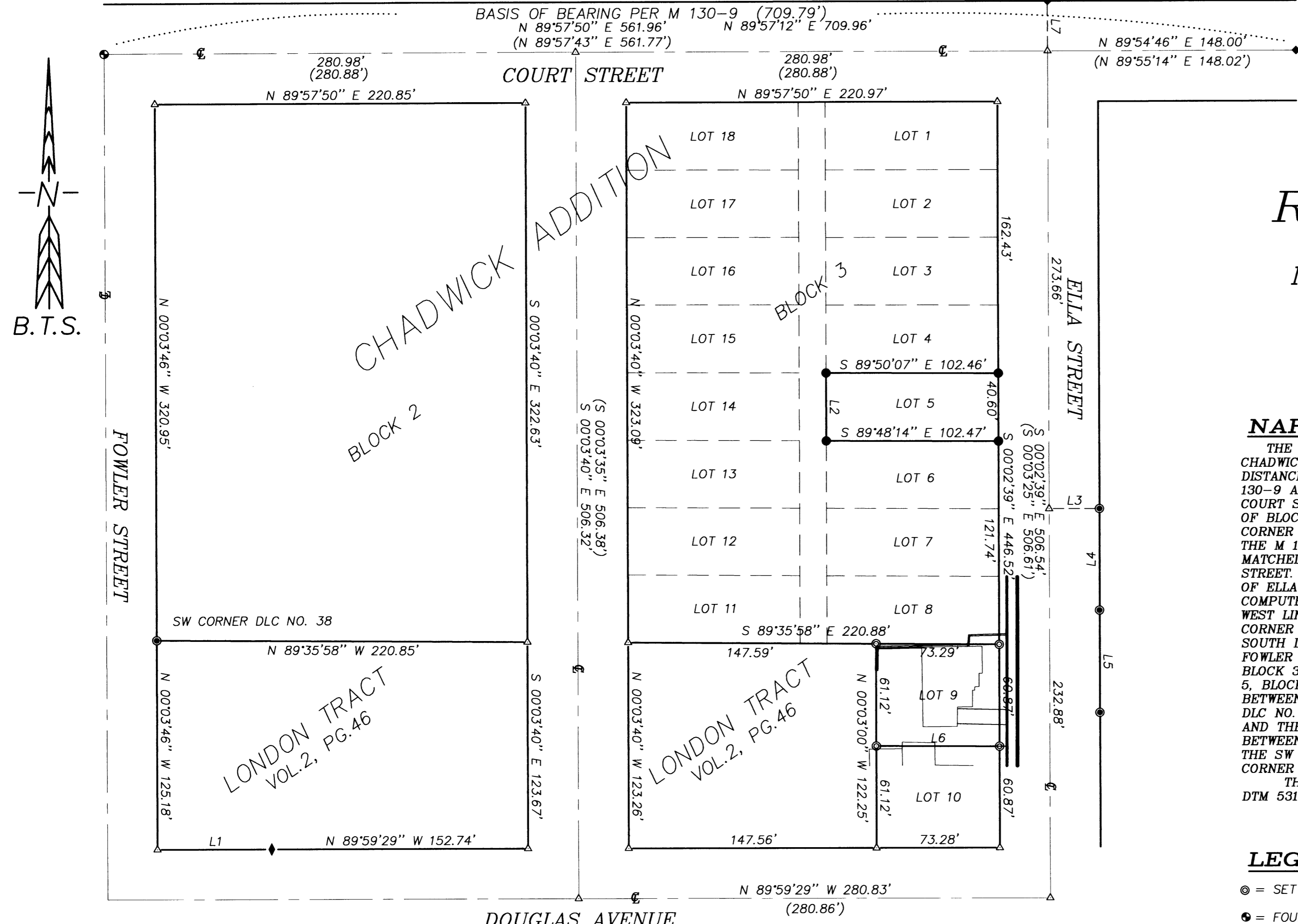
NARRATIVE:

THE PURPOSE OF THIS SURVEY WAS TO MONUMENT THE CORNERS OF LOT 9, BLOCK 3, CHADWICK ADDITION. I COMPUTED COURT STREET-ELLA STREET INTERSECTION AT DISTANCE-DISTANCE INTERSECTION OF COURT STREET TRACT MONUMENTS AS PER M 119-49, M 130-9 AND M 136-78 AFTER STRAIGHTENING THE BENT IRON ROD AT THE EAST END OF COURT STREET. I COMPUTED THE WEST LINE OF BLOCK 2, CHADWICK ADDITION AND SW CORNER OF BLOCK 1, LONDON TRACT AT THE INTERSECTION OF M 130-9 BEARINGS FROM THE SW CORNER OF DLC NO. 38 AND THE M 31-37 MONUMENT. I COMPUTED ELLA STREET BY HOLDING THE M 136-78 MONUMENTS AND THE ELLA-COURT STREET INTERSECTION WHICH EXACTLY MATCHED THE M 136-78 CALLS TO THE M 119-49 MONUMENTS ON THE EAST LINE OF ELLA STREET. I COMPUTED THE SE CORNER OF BLOCK 3 AT THE INTERSECTION OF THE WEST LINE OF ELLA STREET PER M 136-78 AND THE NORTH LINE OF DOUGLAS STREET PER M 130-9. I COMPUTED THE NW CORNER OF BLOCK 2, CHADWICK ADDITION AT THE INTERSECTION OF THE WEST LINE OF BLOCK 2 WITH THE SOUTH LINE OF COURT STREET. I COMPUTED THE NE CORNER OF BLOCK 3 AT THE INTERSECTION OF THE WEST LINE OF ELLA STREET WITH THE SOUTH LINE OF COURT STREET. I THEN COMPUTED PITZER STREET PROPORTIONALLY BETWEEN FOWLER STREET AND ELLA STREET. I THEN COMPUTED THE NE AND SE CORNERS OF LOT 9, BLOCK 3 PROPORTIONALLY BETWEEN THE SE CORNER OF BLOCK 3 AND THE SE CORNER OF LOT 5, BLOCK 3. I THEN COMPUTED THE SW CORNER OF LOT 10 BLOCK 3 PROPORTIONALLY BETWEEN THE SE AND SW CORNER OF BLOCK 3. I HELD A LINE BETWEEN THE SW CORNER OF DLC NO. 38 AND THE NE CORNER OF LOT 9 BLOCK 3 AS THE NORTH LINE OF LONDON TRACT AND THE NORTH LINE OF LOT 9. I COMPUTED THE NW CORNER OF LOT 9 PROPORTIONALLY BETWEEN THE NE CORNER OF LOT 9 AND THE SW CORNER OF LOT 11 AND THEN COMPUTED THE SW CORNER OF LOT 9 PROPORTIONALLY BETWEEN THE NW CORNER OF LOT 9 AND THE SW CORNER OF LOT 10.

THIS SURVEY WAS PERFORMED BY MATT DIXON AND MICKEY CALVERT USING A NIKON DTM 531 TOTAL STATION WITH COMPUTATIONS AND DRAFTING BY KRIS DEGROOT.

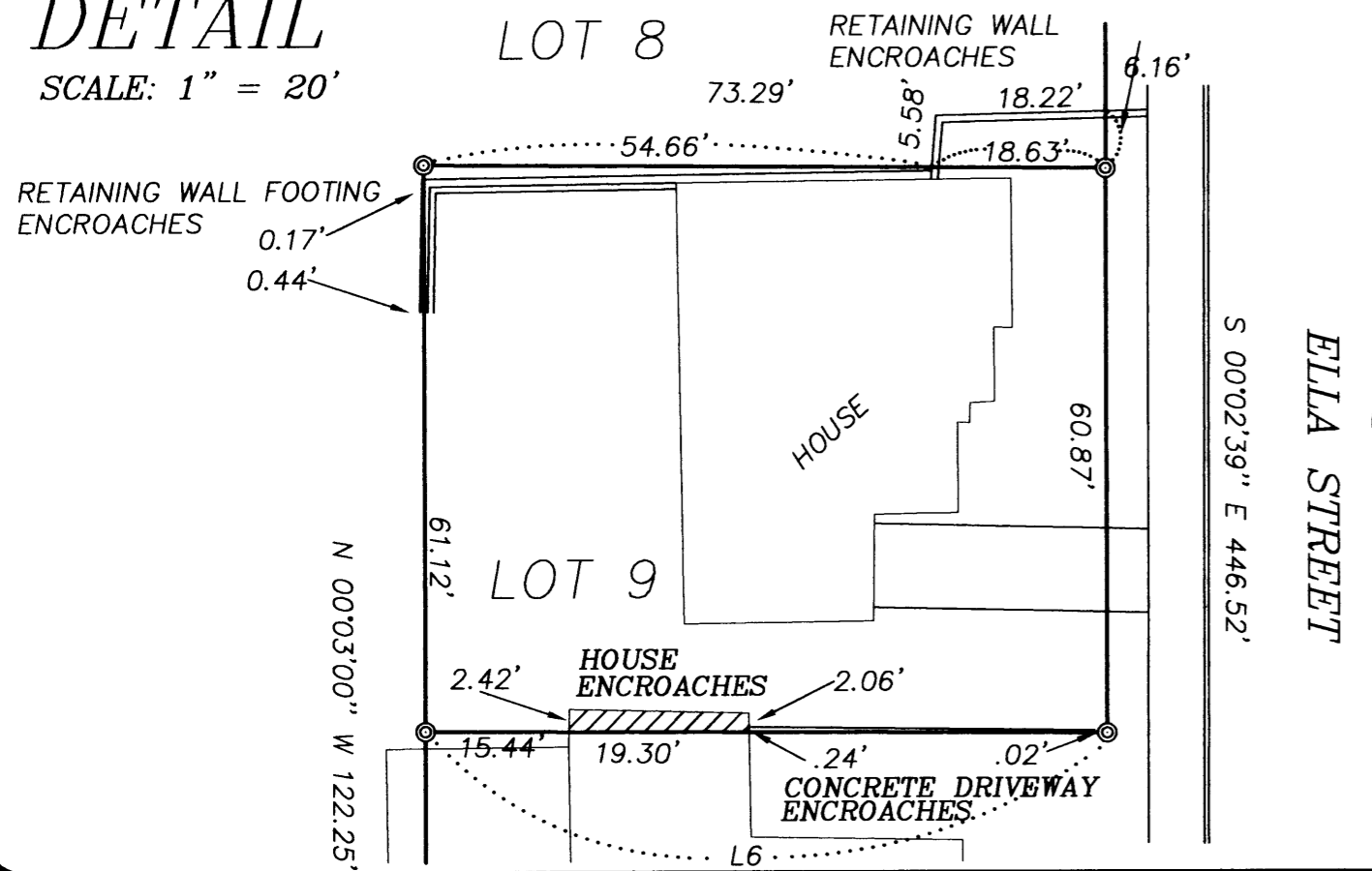
LEGEND:

- ⊙ = SET 5/8" x 30" IRON ROD w/PLASTIC CAP MARKED "BTS ENG-SURV"
- = FOUND BCIP STREET MONUMENT
- ◆ = FOUND 5/8" IRON ROD PER COURT STREET TRACTS, VOL 11, PG. 11
- ◇ = FOUND 5/8" IRON ROD PER M 31-37
- ⊙ = FOUND 5/8" IRON ROD PER M 119-49
- = FOUND 5/8" IRON ROD PER M 136-78
- △ = COMPUTED POINT NOT SET
- x — = EXISTING FENCE
- () = RECORD PER M 136-78



DETAIL

SCALE: 1" = 20'



NUMBER	DIRECTION	DISTANCE
L1	N 89°59'29" W	68.09'
L2	S 00°02'24" E	40.54'
L3	N 89°57'21" E	29.95'
L4	S 00°05'36" W	60.88'
L5	S 00°06'17" E	60.97'
L6	N 89°47'43" W	73.28'
L7	S 00°09'51" E	30.00'

BTS ENGINEERING & SURVEYING, INC.
431 S.E. MAIN ST., ROSEBURG, OR 97470
PHONE (541) 673-0966 FAX (541) 673-0105

SCALE: 1" = 50'
DATE: SEPT. 25, 2002

FOR: WAYNE BATES
374 ELLA STREET
ROSEBURG, OR 97470

JOB #: 02-079
FILE: BATES.DWG
SHEET 1 OF 1

MAP FILE M141-5