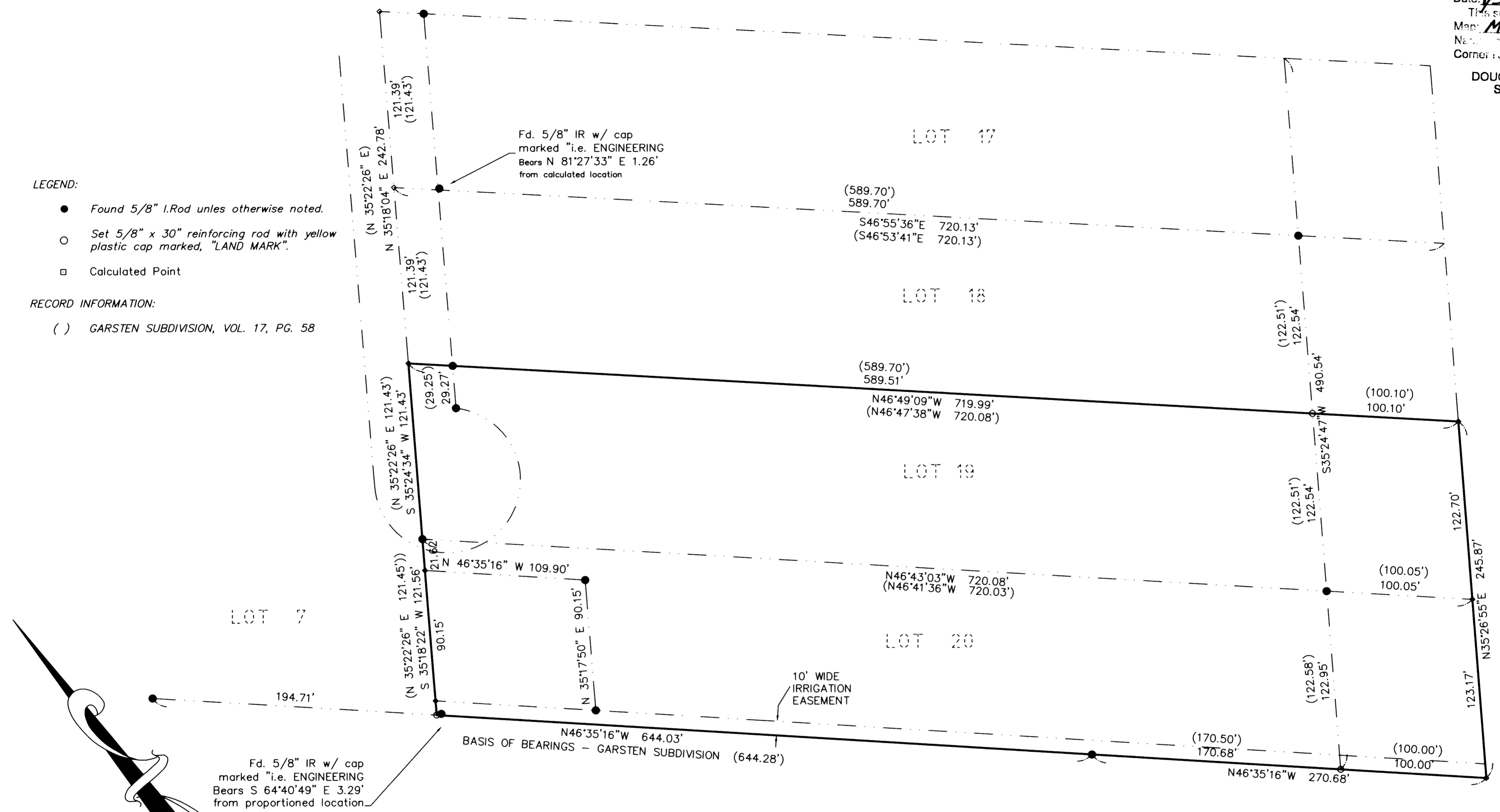


FILED  
Date: 1/31/2003 By: JP  
This survey consists of:  
Map: M141-48  
Name:  
Corner pt:

DOUGLAS COUNTY  
SURVEYOR

- LEGEND:
- Found 5/8" I.Rod unless otherwise noted.
  - Set 5/8" x 30" reinforcing rod with yellow plastic cap marked, "LAND MARK".
  - Calculated Point

RECORD INFORMATION:  
( ) GARSTEN SUBDIVISION, VOL. 17, PG. 58



NARRATIVE

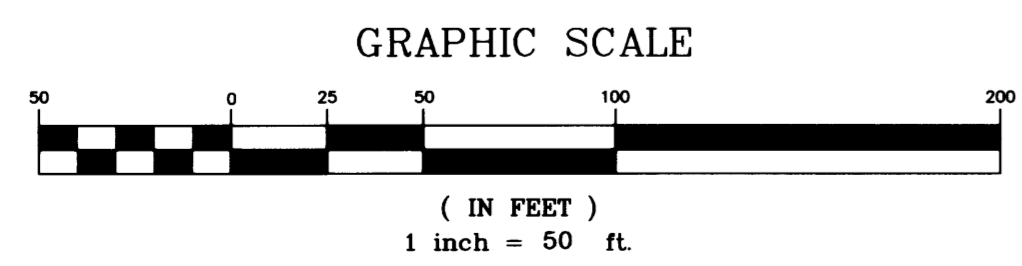
THE PURPOSE OF THE SURVEY WAS TO REPLACE MISSING CORNERS OF LOTS 19 & 20, GARSTEN SUBDIVISION.

THE EXISTING MONUMENTS WERE LOCATED AND INCORPORATED INTO A CLOSED TRAVERSE. MISSING CORNERS AND CORNERS OUT OF POSITION WERE SET AS FOLLOWS:

THE NORTHWEST CORNER OF LOT 20 WAS ESTABLISHED AT PROPORTIONATE DISTANCE ALONG THE WEST LINE.

THE MISSING CORNER ALONG THE WEST LINE NEAR THE RIVER WAS SET AT THE INTERSECTION OF THE REFERENCE LINE AND THE WEST LINE

THE MISSING CORNER ON THE EAST LINE OF LOT 19 WAS SET AT PROPORTIONATE DISTANCE ALONG THE REFERENCE LINE.



Sheet 1 of 1

**BOUNDARY SURVEY**  
 In the SW 1/4, Section 27, T. 26 S., R. 6 W., W.M.  
 In Lots 19 & 20, GARSTEN SUBDIVISION  
 Douglas County, Oregon  
 JANUARY 25, 2003

REGISTERED PROFESSIONAL LAND SURVEYOR

FOR: Larry Garzenelli  
 313 Rio Vista Drive  
 Roseburg, Oregon

OREGON  
 JULY 18, 1987  
 MARK A. HEIMBURGER  
 2287

Land Mark SURVEYING INC.  
 3329 N.E. Stephens Street  
 Roseburg, Oregon 97470  
 Tel (541) 677-9400  
 Fax (541) 677-9401

RENEWS 06/30/2003 LM Proj. No. 2003-0001