

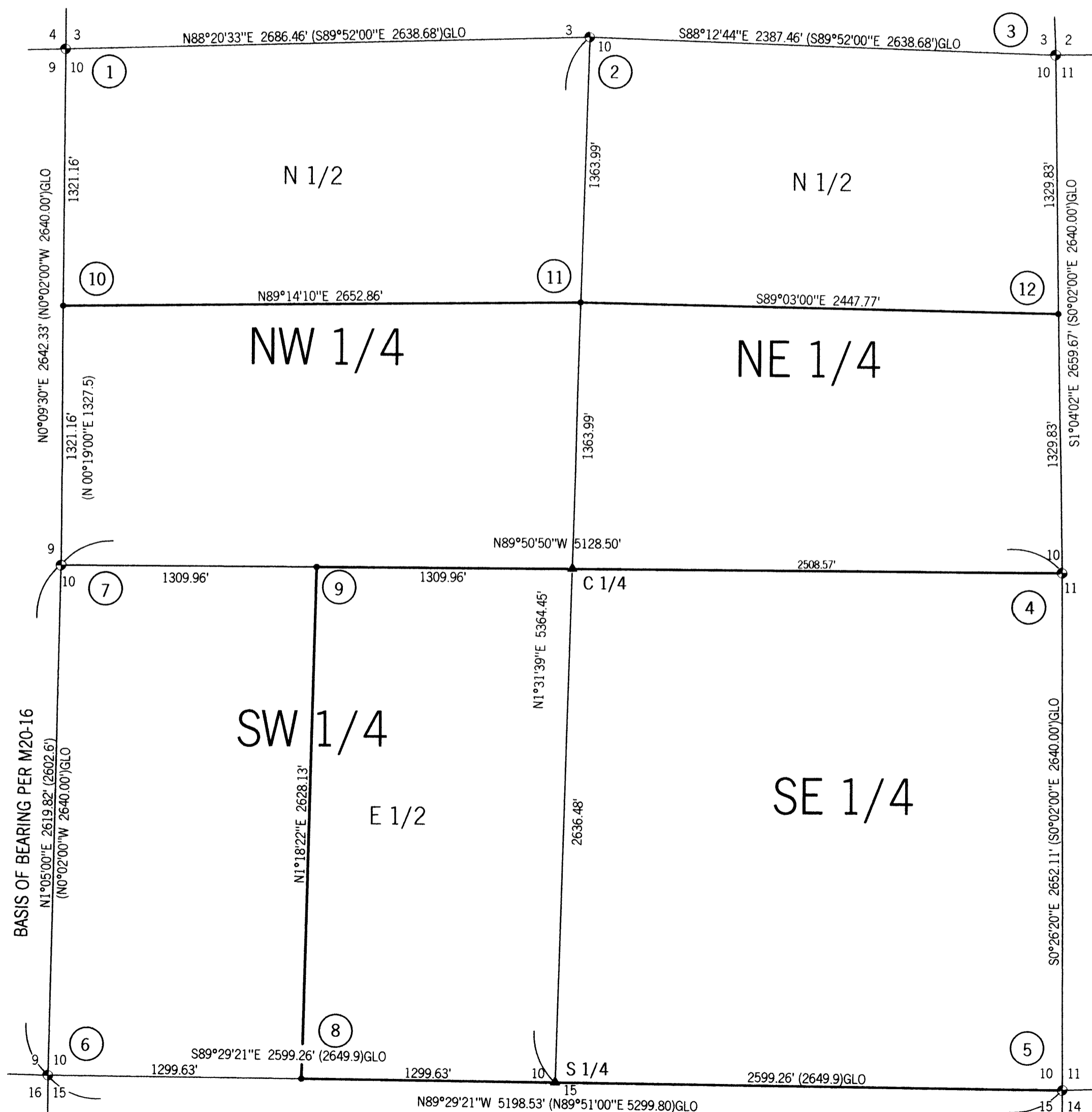
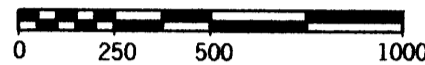
BOUNDARY SURVEY

IN SECTION 10, T. 31 S., R. 9 W., W. M.

DOUGLAS COUNTY, OREGON - JANUARY 2003



SCALE 1" = 500'



- 1** NW COR. S 10
 2 1/2" BC UP 0.40' ALSO 7/8" HEX ROD AT REC. B & D
 13" CEDAR BT NOW 14", N 21° E 21.1' W/ OPEN FACE, SOME SCRIBE VIS., TAG
 30" CEDAR BT DOWN, N 39° W 37.6'
 24" D. FIR BT NOW ROTTED STUMP, S 30° W 5.3'
 22" D. FIR BT NOW TALL BARKLESS SNAG, S 72° E 5.3', LOOKS TO HAVE BEEN OPENED, TAG
 12" HEMLOCK BT NOW 22" W. FIR, S 84° W 144.2' SCAR VISIBLE & TAG
- NEW:
 10.5" D, FIR BT N 37° W 41.68' SCRIBED "SE S4 BT" & TAG

- 2** N 1/4
 2 1/2" BC UP 1.65' ON NORTH SIDE OF HEMLOCK COR. TREE
 8" HEMLOCK COR. TREE NOW 13" W/ OPEN FACE & TAG
 16" HEMLOCK BT STUMP 5.0' TALL, N 63° W 6.6', BARK GONE, SCRIBE VIS., METAL ON TOP
 12" NOW 18" HEMLOCK BT N 42° E 30.4' W/ SPIRE TOP, OPENED BUT NO SCRIBE VIS. DBL. BLAZE
- 3** NE COR. S 10
 2 1/2" BC UP 1.10'
 18" NOW 13" D. FIR BT STOB 10' TALL, S 32° E 16.5' W/ OPEN FACE, SOME SCRIBE VIS. NO BARK
 16" NOW 15" D. FIR BT STOB 10' - 12' TALL, S 26° W 23.4', NO BARK, SCAR VISIBLE
 28" D. FIR BT NOW UPROOTED STUMP, N 40° W 90.4' TO ROOT HOLE
 36" NOW 39" D. FIR UPROOTED STUMP, S 5° W 25.1' TO ROOT HOLE
- NEW:
 14" HEMLOCK BT, N 31° W 10.97', SCRIBED "SE S3 BT" & TAG
 7" D. FIR BT, N 24° E 5.78', SCRIBED "SW S2 BT" & TAG
- 4** E 1/4
 2 1/2" BC UP 0.70'
 20" D. FIR BT NOW DOWN, N 71° W 94.9' TO ROOT HOLE, SCRIBE VIS., TAG
 22" D. FIR STUMP 3.6' TALL, S 19° E 55.3', METAL CAP, NO BARK, SCAR VIS., TAG
- NEW:
 8" D. FIR BT, S 52° E 7.85', SCRIBED "W1/4 S11 BT" & TAG
 7" D. FIR BT, S 88° E 5.0', SCRIBED "W1/4 S11 BT" & TAG
 6" D. FIR BT, S 88° W 7.0', SCRIBED "E1/4 S10 BT" & TAG
 STEEL POSTS 1.0' WEST OF BC
- 5** SE COR. S 10
 2 1/2" BC UP 0.80'
 10" NOW 12" YEW BT, N 68° E 14.5, SCAR, PARTLY DEAD, TAG
 8" D. FIR BT AT S 35° E 15.8' NOW GONE, TAG FOUND ON GROUND
 NO BT'S FOUND IN SW
 10" D. FIR STUMP AT N 85° W 29.0' NOW GONE
 21" CEDAR BT NOW 29", S 50° E 35.0', HEALED DBL BLAZE, TAG
 18" D. FIR BT NOW 31", N 56 1/2° W 39.9', TREE HAS TALL SCAR, NO TAG
 11" YEW BT NOW 14", N 79° E 14.5', SCRIBE VIS. TAG
 SET STEEL POST 1.0 WEST OF BC
- 6** SW COR. S 10
 2 1/2" BC UP 0.50 W/ 3/4" I. PIPE ALONG SIDE
 40" D. FIR BT, S 39° E 43.5', HEALED
 18" ROTTED D. FIR S 40° W 31.1', 7.0' TALL
 40" D. FIR BT AT S 71° W 25.8' NOW GONE, FOUND ROOT HOLE
 54" D. FIR BT, S 02° E 34.9', HEALED W/ TAG
 50" D. FIR STUMP, N 88° E 38.9', "X" CARVED IN TOP, TAG
 5" D. FIR NOW 9", N 57° W 20.9', HEALED DBL BLAZE
- 7** W 1/4
 2 1/2" BC UP 1.0' W/ 3/4" I. PIPE ALONG SIDE
 24" D. FIR BT STUMP, N 26° E 13.2'
 8" D. FIR STOB AT IN SW NOW GONE
 14" D. FIR BT, N 39° E 42.8' IS STUMP LAYING OVER, TIE TO ROOT HOLE
 8" W. FIR BT NOW 23", N 19° W 19.3', CROOKED, SCAR VIS.
 NEW:
 8" D. FIR BT, S 52° E 12.95', SCRIBED "E1/4 S9 BT" & TAG
 8" D. FIR BT, S 45° E 8.77', SCRIBED "W1/4 S10 BT" & TAG

- 8** W 1/16
 SET 5/8" I. ROD W/ 2" ALUM. CAP UP 0.4'
 "W 1/16 S10 PLS 2752", PUNCHED
 15" D. FIR BT, S 55° E 24.95' "W 1/16 S15 BT", TAG
 18" D. FIR BT, WEST 8.18', "W 1/16 S15 BT", TAG
 STEEL POST 1.0 EAST
- 9** CW 1/16
 SET 5/8" I. ROD W/ 2" ALUM. CAP UP 0.3'
 "CW 1/16 S10 PLS 2752", PUNCHED
 4" D. FIR BT, S 7° W 7.15' "CW 1/16 S10 BT", TAG
 4" D. FIR BT, N 34° W 5.30', "CW 1/16 S15 BT", TAG
 STEEL POST 1.0 EAST
- 10** N 1/16
 SET 5/8" I. ROD W/ 2" ALUM. CAP UP 0.4'
 "N 1/16 S10 PLS 2752", PUNCHED
 17" HEMLOCK BT, N 75° E 2.5' "N 1/16 S10 BT", TAG
 23" HEMLOCK BT, S 18° E 21.00', "N 1/16 S10 BT", TAG
 STEEL POST 1.0 SOUTH
 BOTH THESE TREES HAD BT TAGS BUT NO SCRIBE SCAR
 AND NOT OF RECORD. TAGS LOCATED 2 SEPERATE POSITIONS
- 11** CN 1/16
 SET 5/8" I. ROD W/ 2" ALUM. CAP UP 0.4'
 "CN 1/16 S10 PLS 2752", PUNCHED
 4" D. FIR BT, N 52° E 16.30' "CN 1/16 S10 BT", TAG
 4" D. FIR BT, N 82 1/2° W 8.20', "CN 1/16 S10 BT", TAG
 STEEL POST 1.0 EAST
- 12** N 1/16
 SET 5/8" I. ROD W/ 2" ALUM. CAP UP 0.4'
 "N 1/16 S10 PLS 2752", PUNCHED
 5" D. FIR BT, N 7° E 11.85' "N 1/16 S11 BT", TAG
 5" D. FIR BT, S 47° E 24.38', "N 1/16 S11 BT", TAG
 STEEL POST 1.0 WEST

- LEGEND:**
- FD GOVERNMENT CORNER (SEE CORNER NOTES)
 - SET 5/8" X 30" IRON ROD W/ 2" ALUMINUM CAP MARKED AS NOTED
 - ▲ COMPUTED POINT, NOTHING FOUND OR SET
 - () RECORD PER M20-16

NARRATIVE:
 THIS SURVEY WAS COMPLETED TO ESTABLISH THE EAST 1/2 OF THE SW 1/4, THE SE 1/4, THE NORTH 1/2 OF THE NW 1/4 AND THE NORTH 1/2 OF THE NE 1/4 OF SECTION 10. A CLOSED LOOP TRAVERSE WAS COMPLETED TO TIE THE FOUND CONTROLLING MONUMENTED CORNERS OF SECTION 10 AS WELL AS THE WEST, NORTH AND EAST 1/4 CORNERS. WITH THIS COMPLETED THE SECTION WAS BROKEN DOWN IN ACCORDANCE TO THE 1973 MANUAL OF INSTRUCTION. THE SOUTH 1/4 CORNER WAS SEARCHED FOR BUT THIS AREA HAVING BEEN LOGGED OVER MANY YEARS BACK HAS DISTROYED ANY TRACE OF THE ORIGINAL BEARING TREES. CALLS IN THE ORIGINAL NOTES WERE CHECKED AGAINST PANTHER CREEK AND PANTHER RIDGE WITH A DISTANCE DISCREPANCY NOTED MAKING THE NOTES SOMEWHAT SUSPECT. THE SOUTH 1/4 CORNER WAS THEN COMPUTED BY USING PROPORTIONING AND THAT POSITION HELD FOR THE SECTION BREAKDOWN.
 THE NORTH 1/16 CORNER OF SECTION 9 AND 10 WAS SHOWN AS BEING TIED PER SURVEY M20-16 HOWEVER INSPECTION OF THE AREA FAILED TO TURN UP ANY MONUMENT. TWO TREES WERE FOUND WITH BEARING TREE TAGS ATTACHED. THE POSITION OF THE N 1/16 CORNER PER EACH TAG FELL IN SEPERATE LOCATIONS AND BOTH THOSE AREAS WERE SEARCHED. RESEARCH OF THE NAME, "W. OWEN", GIVEN ON ONE OF THE TAGS LED TO ROBERT DOLLAR COMPANY OF GLENDALE, NOW SUPERIOR, AND A LETTER PER CS 51/68 REGARDING SURVEY WORK IN SECTION 10 IN 1960. CONTACT WITH SUPERIOR LUMBER HAS RETURNED NO RESULTS OF A MONUMENT PLACED AT THE INTENDED POSITION PER THE TAG OR ANY SURVEY FIELD NOTES. THE POSITION OF THE N 1/16, SEC. 9 & 10 WAS THEN HELD AS COMPUTED. THE LINES SHOWN IN BOLD WERE RAN, POSTED, BLAZED, PAINTED AND FLAGGED AS REQUESTED BY THE OWNER.

FIELD CREW: C. SWEEDEN, E. WILDS AND G. STACY
 MAPPING AND COMPUTATIONS: C. SWEEDEN
 EQUIPMENT USED: NIKON DTM-521 W/ SUPPORT

SURVEY FOR:
 SUPERIOR LUMBER COMPANY
 2695 GLENDALE VALLEY ROAD
 GLENDALE, OREGON 97442

REGISTERED
 PROFESSIONAL
 LAND SURVEYOR

Carl A. Sweeden

OREGON
 CARL A. SWEEDEN
 2752
 JANUARY 16, 1996
 EXPIRES 6-30-04

Sweeden
 Land Surveying

Carl A. Sweeden
 P.L.S.

5211 Cole Road
 Oakland, Ore. 97462
 Tel. 541-459-9523

FILED

Date: 1/13/2003 By: JP
 This survey consists of:
 Map: M 141-39
 Narrative:
 Corner Rpt: _____

DOUGLAS COUNTY
 SURVEYOR

MAP FILE M141-39