

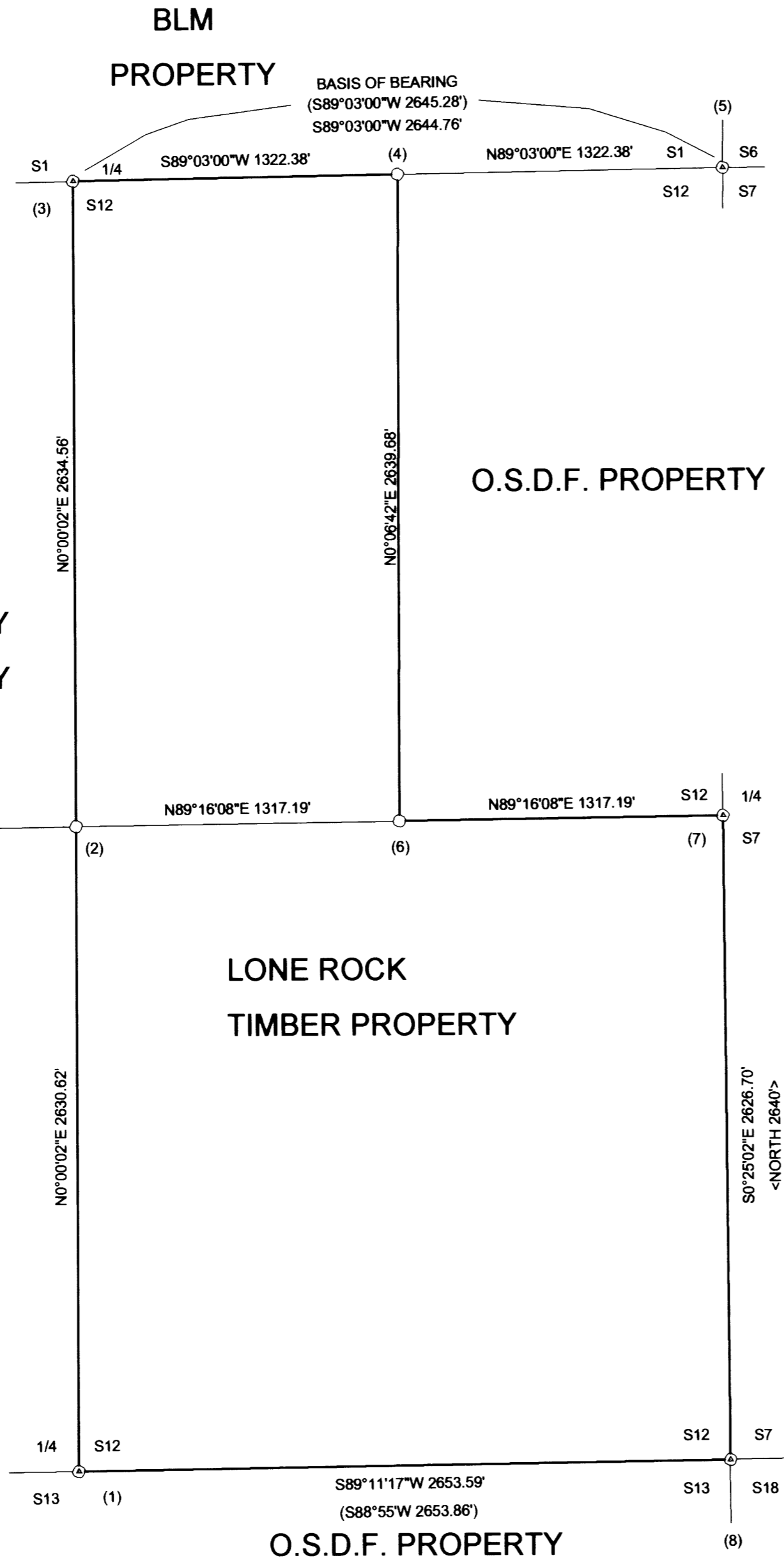
# LONE ROCK TIMBER CO.

PO BOX 1127 ROSEBURG, OREGON 97470  
SECTION 12, TOWNSHIP 32 SOUTH, RANGE 6 WEST, W.M.

PIEREN & GOFF SURVEY  
DOUGLAS COUNTY, OREGON  
DATE: NOV. 2002  
SCALE: 1" = 500'



OREGON STATE  
DEPT. OF FORESTRY  
(O.S.D.F.) PROPERTY



**LEGEND:**

- ⊙ - FOUND MONUMENTS
- - SET 5/8" BY 40" IRON ROD WITH ALUMINUM CAP
- - PROJECTED LINES
- - LINES FLAGGED, BLAZED & TAGGED
- ( ) - BLM 1980 RECORD SURVEY FILED IN DOUGLAS COUNTY SURVEYORS OFFICE (CHAINS CONVERTED TO FEET)
- < > - GLO ORIGINAL FIELD NOTES FILED IN DOUGLAS COUNTY SURVEYORS OFFICE (CHAINS CONVERTED TO FEET)

REGISTERED  
PROFESSIONAL  
LAND SURVEYOR

*Ken W. Hoffine*

OREGON  
JULY 15 1981  
KEN W. HOFFINE  
2281

EXPIRES 6-31-03

**NARRATIVE**

THIS SURVEY WAS INITIATED TO ESTABLISH PROPERTY CORNERS AND PROPERTY LINES FOR TIMBER CUTTING PURPOSES. WE INITIATED THIS SURVEY AT THE SOUTH 1/4 OF SECTION 12 A BLM BCIP SET BY PROPORTION. WE BEGAN A RANDOM CLOSED LOOP TRAVERSE FROM THE SOUTH 1/4 AROUND THE EXTERIOR BOUNDARY OF THE LONE ROCK PROPERTY TIEING IN THE BLM PROPORTIONED NORTH 1/4 AND ORIGINAL POSITIONS FOR THE EAST 1/4 AND SOUTHEAST SECTION CORNER. WE THEN RAN A SEPARATE CLOSED LOOP TRAVERSE FROM A TRAVERSE POINT NEAR THE EAST 1/16 TO THE NORTHEAST CORNER OF SECTION 12 A RENEWED ORIGINAL CORNER POSITION. NEXT WE RAN A CLOSED LOOP TRAVERSE TO THE WEST 1/4 OF SECTION 12 A BLM BCIP SET BY PROPORTION. WE COMPUTED THE BREAKDOWN OF SECTION 12 AND SET THE CORNERS AS SHOWN HEREON. PROPERTY LINES SHOWN WERE BLAZED, PAINTED, RIBBONED AND TAGGED. THIS SURVEY WAS DONE WITH A NIKON DTM 450 WITH GARY ANGIOLET, MARK DVORSCAK AND IGNACIO ROMAN ASSISTING ME.

FILED  
Date: 12/20/2002 By: J.P.  
This survey consists of:  
Map: M141-34  
Narrative:  
Corner Rpt:  
DOUGLAS COUNTY  
SURVEYOR

**CORNER INFORMATION**

THE FOLLOWING IS A RECORD OF ALL CORNERS FOUND OR SET DURING THE COURSE OF THIS SURVEY:

- 1) THE SOUTH 1/4 CORNER OF SECTION 12  
FOUND 1980 BLM BRASS CAP.  
- 12" CEDAR BEARS N78 3/4"E, 22.7 FEET (RECORD N77 3/4"E, 22.77 FEET) WELL HEALED FACE AND BLM TAG  
- 22" DOUGLAS FIR BEARS S22"W, 38.5 FEET (RECORD S22"W, 38.94 FEET) WELL HEALED FACE AND BLM TAG  
CORNER LIES ON EAST SIDE OF RIDGE. ROCK ROAD APPROXIMATELY 200 FEET EAST AND 150 FEET WEST FROM CORNER.
- 2) THE CENTER 1/4 OF SECTION 12  
SET 5/8" X 40" IRON ROD WITH 2 1/2" ALUMINUM CAP MARKED LONE ROCK TIMBER T32S 46W C 1/4 S12 2002 PLS 2291.  
- 18" DOUGLAS FIR BEARS N52 1/2"W, 35.5 FEET, WE SCRIBE C 1/4 S12 B.T. AND TAG TREE  
- 21" DOUGLAS FIR BEARS S44 1/2"E, 60.4 FEET, WE SCRIBE C 1/4 S12 B.T. AND TAG TREE  
- 9" CEDAR BEARS S24 1/4"W, 35.6 FEET, WE SCRIBE C 1/4 S12 B.T. AND TAG TREE  
- 27" DOUGLAS FIR BEARS S30 1/4"W, 41.2 FEET, WE SCRIBE C 1/4 S12 B.T. AND TAG TREE  
CORNER LIES ON NORTHWEST SLOPE APPROX. 150 FT. WEST OF NEW ROCK ROAD. BLAZED LINES SOUTH AND NORTH OF CORNER.
- 3) THE NORTH 1/4 CORNER OF SECTION 12  
FOUND 1980 BLM BRASS CAP.  
- 10" CEDAR BEARS S34 1/4"W, 14.6 FEET (RECORD S33 3/4"W, 14.52 FEET) VISIBLE SCRIBING AND TAG  
- 32" DOUGLAS FIR BEARS N1 1/2"W, 47.00 FEET (RECORD N1"W, 46.86 FEET) WELL HEALED FACE, WE TAG TREE  
CORNER LIES ON FLAT APPROXIMATELY 50 FEET EAST OF CREEK.
- 4) THE EAST 1/16 CORNER BETWEEN SECTIONS 1 AND 12  
SET 5/8" X 50" IRON ROD WITH 2 1/2" ALUMINUM CAP MARKED LONE ROCK TIMBER E1/16 S1 S12 2002 PLS 2291.  
- 18" DOUGLAS FIR BEARS N41 3/4"W, 20.9 FEET, WE SCRIBE E1/16 S1 B.T. AND TAG TREE  
- 24" DOUGLAS FIR BEARS S36 1/2"E, 31.9 FEET, WE SCRIBE E1/16 S12 B.T. AND TAG TREE  
CORNER LIES ON SOUTH SIDE OF RIDGETOP BLAZED LINE RUNNING WEST AND SOUTH FROM CORNER.
- 5) THE NORTHEAST SECTION CORNER OF SECTION 12  
FOUND 1980 OREGON STATE BOARD OF FORESTRY BRASS CAP.  
- 43" FIR SNAG BEARS S30"E, 11.75 FEET (RECORD S28"E, 11.88 FEET) VISIBLE BARK SCRIBING  
- 11" DOUGLAS FIR BEARS N52 3/4"E, 6.2 FEET (RECORD N50"E, 6.27 FEET) WELL HEALED FACE AND TAG  
- 28" CEDAR BEARS N68 1/4"W, 27.1 FEET (RECORD N67"W, 27.39 FEET) WELL HEALED FACE AND TAG  
- 35" CEDAR BEARS S31 3/4"W, 46.0 FEET (RECORD S34"W, 46.86 FEET) WELL HEALED FACE AND TAG  
CORNER LIES ON EAST FACING SLOPE APPROXIMATELY 415 FEET EAST OF END OF RIDGETOP ROCK ROAD WITH 4" X 4" POST LAYING ALONG SIDE OF CAP.
- 6) THE CENTEREAST 1/16 CORNER FOR SECTION 12  
SET 5/8" X 40" IRON ROD WITH 2 1/2" ALUMINUM CAP MARKED LONE ROCK TIMBER CE 1/16 S12 2002 PLS 2291.  
- 18" DOUGLAS FIR BEARS N61"E, 19.7 FEET, WE SCRIBE CE 1/16 S12 B.T. AND TAG TREE  
- 19" DOUGLAS FIR BEARS S12 1/2"E, 13.6 FEET, WE SCRIBE CE 1/16 S12 B.T. AND TAG TREE  
CORNER LIES ON SOUTH FACING SLOPE APPROXIMATELY 80.0 FEET EAST OF NEW ROCK ROAD. BLAZED LINE RUNS NORTH AND EAST FROM CORNER.
- 7) THE EAST 1/4 CORNER OF SECTION 12  
FOUND 2 1/2" CAP BURIED 2 FEET BELOW GROUND LEVEL ON EAST FILL SLOPE OF DIRT CAT ROAD.  
- 19" DOUGLAS FIR BEARS S59 1/4"E, 3.8 FEET (NO RECORD) WELL HEALED FACE AND TAG THAT READS N60"W, 4.3 FEET  
- 24" DOUGLAS FIR BEARS N5 3/4"E, 16.9 FEET (RECORD N6°40'E, 16.76 FEET) WELL HEALED FACE AND TAG  
- 14" DOUGLAS FIR BEARS S67"W, 31.5 FEET (RECORD S68°15'W, 31.05 FEET) WELL HEALED FACE AND TAG  
CORNER LIES ON EAST SLOPE ON EAST EDGE OF DIRT CAT ROAD.
- 8) THE SOUTHEAST CORNER OF SECTION 12  
FOUND 1959 DOUGLAS COUNTY BRASS CAP.  
- 18" FIR BEARS N30 1/2"E, 38.6 FEET (RECORD N32"E, 39.5 FEET) HEALED FACE AND TAG  
- 16" FIR BEARS S59 3/4"E, 51.1 FEET (RECORD S58 1/2"E, 51.6 FEET) HEALED FACE AND LRT TAG  
- 22" CEDAR BEARS S23 1/4"E, 21.9 FEET (RECORD S24"E, 22.4 FEET) HEALED FACE AND LRT TAG  
- LARGE FIR SNAG S1 3/4"E, 9.8 FEET (RECORD SOUTH 10.0 FEET) HEALED FACE  
- 9" MADRONE N53 1/2"W, 24.2 FEET (RECORD N52"W, 24.4 FEET) WELL HEALED FACE AND TAG  
CORNER 1.0 FEET ABOVE GROUND ON SOUTH FACING SLOPE APPROXIMATELY 150 FEET NORTH OF MAIN ROCK ROAD.
- 9) THE WEST 1/4 CORNER OF SECTION 12  
FOUND 1980 BLM BRASS CAP.  
- 20" DOUGLAS FIR BEARS S32 3/4"E, 18.9 FEET (RECORD S33 1/2"E, 19.8 FEET) WELL HEALED FACE AND TAG  
- 16" DOUGLAS FIR BEARS N46"W, 8.7 FEET (RECORD N46"W, 8.25 FEET) WELL HEALED FACE NO TAG  
CORNER LIES IN TREES APPROXIMATELY 30 FEET WEST OF ROAD. THIS ROAD ENDS APPROXIMATELY ANOTHER 70 FEET SOUTH.

MAP FILE M141-34

MAP FILE M141-34