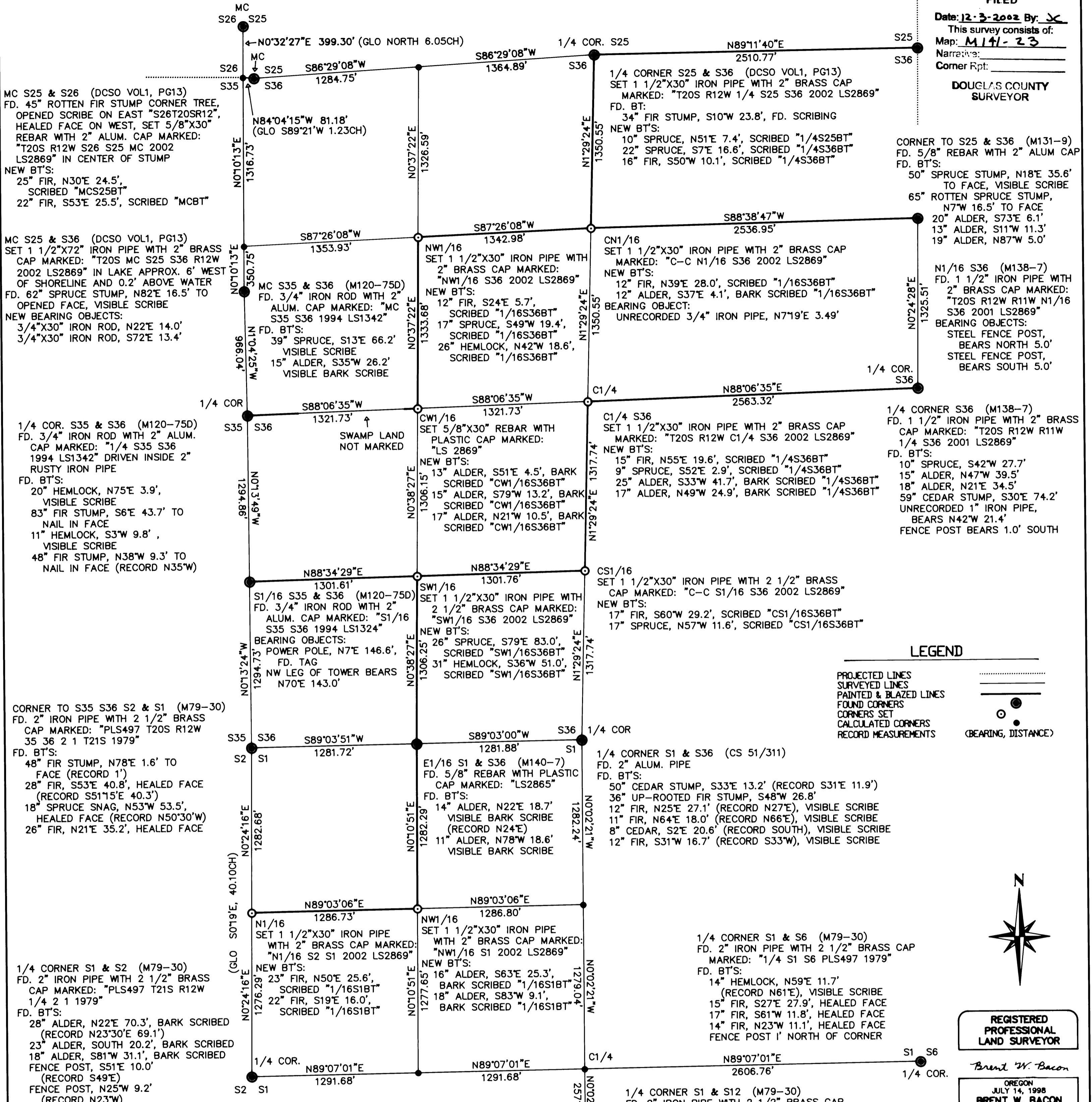


FILED
Date: 12-3-2002 By: [Signature]
This survey consists of:
Map: M141-23
Narrative:
Corner Rpt:
DOUGLAS COUNTY
SURVEYOR



LEGEND
PROJECTED LINES
SURVEYED LINES
PAINTED & BLAZED LINES
FOUND CORNERS
CORNERS SET
CALCULATED CORNERS
RECORD MEASUREMENTS
(BEARING, DISTANCE)



**REGISTERED
PROFESSIONAL
LAND SURVEYOR**
Brent W. Bacon
OREGON
JULY 14, 1998
BRENT W. BACON
2869

NARRATIVE

THE PURPOSE OF THIS SURVEY WAS TO SUBDIVIDE SECTION 36, TOWNSHIP 20 SOUTH, RANGE 12 WEST, AND SECTION 1, TOWNSHIP 21 SOUTH, RANGE 12 WEST, WILLAMETTE MERIDIAN, DOUGLAS COUNTY, OREGON. THIS SURVEY WAS CONDUCTED FOR MENASHA FOREST PRODUCTS CORPORATION, PORT BLAKELY TREE FARMS, LINCOLN TIMBER, AND ROSBORO LUMBER COMPANY. THE CONTROLLING SURVEYS WERE THE 1857 GLO SURVEY BY HARVEY GORDON, A 1965 SURVEY BY RON DURHAM (CS 51/311), A 1980 SURVEY BY RICHARD HINTZ (M79-30), A 1994 SURVEY BY RONALD STUNTZNER (M120-75D), A 2001 SURVEY BY ME (M138-7) AND A 2002 SURVEY BY TROY RAMBO (M140-7). BOTH SECTIONS WERE SUBDIVIDED ACCORDING TO THE 1973 BLM MANUAL OF SURVEYING INSTRUCTIONS.

THE NW CORNER OF SECTION 36 FALLS IN THE LAKE. DUE TO THE CLOSENESS OF THE FOUND ORIGINAL MEANDER CORNERS TO THE NORTH AND EAST, A DISTANCE-DISTANCE INTERSECT WAS USED TO CALCULATE THE BEST AVAILABLE POSITION OF THE NW CORNER. THE N1/16 BETWEEN SECTIONS 25 & 36 AND THE N1/16 BETWEEN SECTIONS 35 & 36 WERE CALCULATED AT MIDPOINT BETWEEN THE NW CORNER AND THE RESPECTIVE 1/4 CORNER. THEY WERE THEN SLID PERPENDICULAR TO FALL ON LINE AS SHOWN ON THIS MAP.

THE EQUIPMENT USED WAS TRIMBLE 4000 SERIES GPS RECEIVERS FOR TEMPORARY CONTROL AND A NIKON DTM830 TOTAL STATION WITH TDS DATA COLLECTION SOFTWARE. THE BASIS OF BEARING IS GEODETIC AS DETERMINED FROM THE GPS CONTROL SURVEY. DISTANCES MEASURED TO BEARING TREES ESTABLISHED IN THIS SURVEY ARE TO A SPIKE SET AT SIDE CENTER OF THE TREE. ALL OTHER DISTANCES ARE MEASURED TO SIDE CENTER UNLESS NOTED. BEARINGS WERE MEASURED TO THE CENTER OF THE TREE USING A HAND COMPASS. A TAG WAS ATTACHED TO THE BEARING TREE FACING THE CORNER WITH AN ORANGE BAND PAINTED AROUND THE TREE. LINE SHOWN AS MARKED ON THIS MAP WAS BLAZED AND PAINTED ORANGE. THE ASSISTING PERSONNEL WERE JOHN MINOR, JERRY ESTABROOK, DOYCE ROSE, AND BRUCE WEBSTER.

1/4 CORNER S1 & S12 (M79-30)
FD. 2" IRON PIPE WITH 2 1/2" BRASS CAP
MARKED: "T21S PLS497 R12W 1 12 1979"
FD. BT'S:
22" FIR STUMP, S89°E 42.3', HEALED FACE
21" FIR STUMP, N11°W 34.6'
(RECORD N8°30'W 33.9'), HEALED FACE

MENASHA FOREST PRODUCTS CORP.
T20S R12W S36 & T21S R12W S1

PROJECT NO:	SCALE: 1" = 500'
DRAWN BY: B. BACON	DATE: 10/8/02
CHECKED BY: J. MINOR	SHT: OF: 1 1
APPROVED BY:	