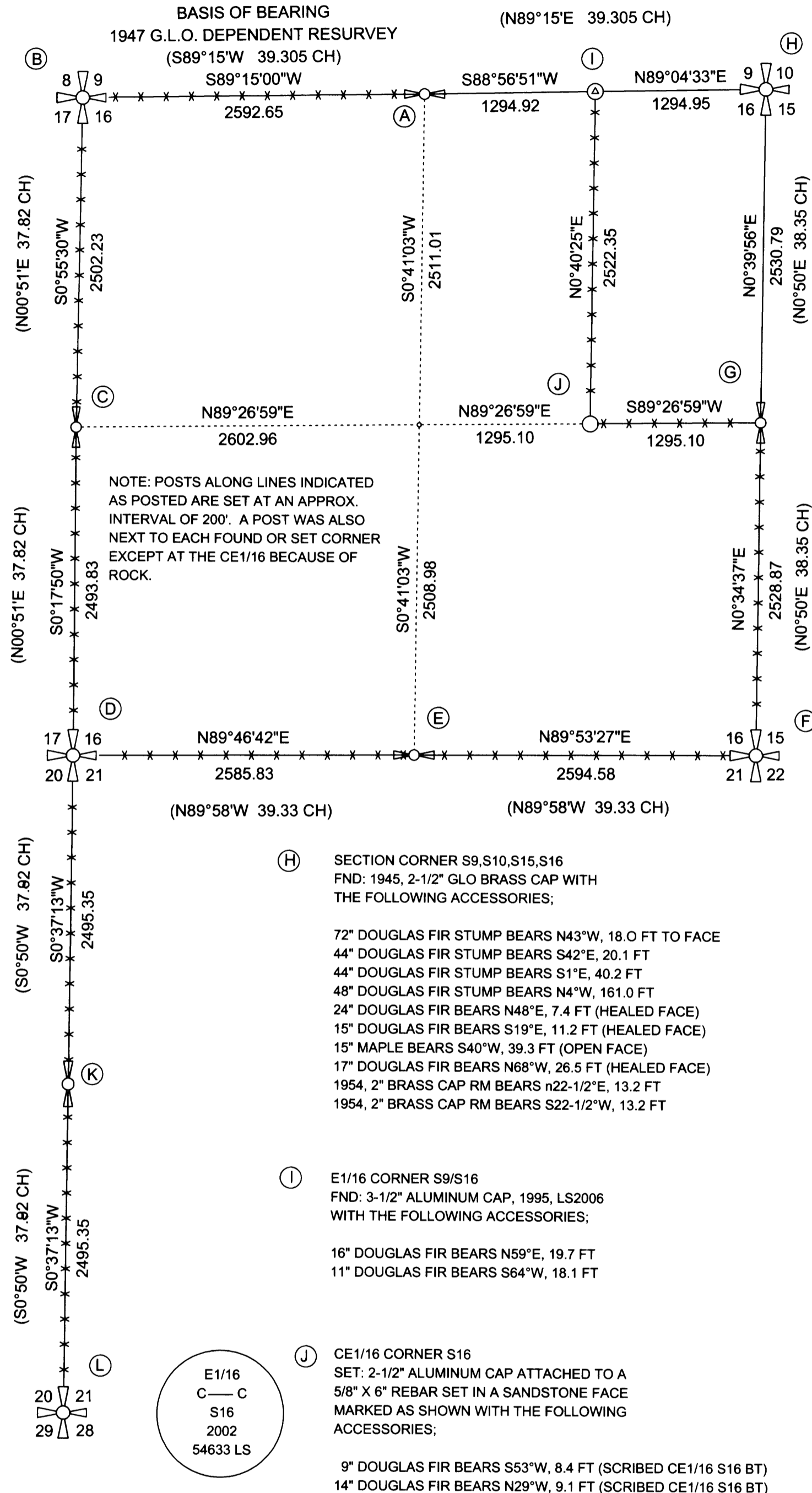
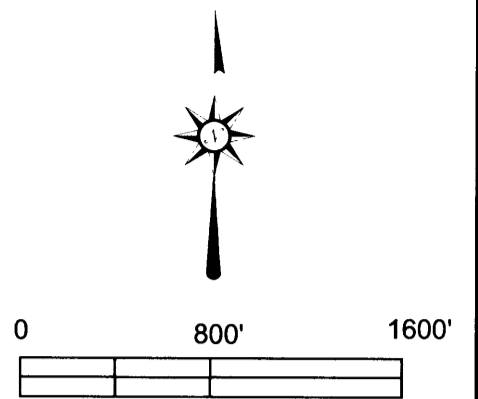


RECORD OF SURVEY
FOR: ROSEBURG RESOURCES CO.
SEC. 16, T21S, R08W, W.M.
DOUGLAS COUNTY, OR
10/30/02



NOTE: POSTS ALONG LINES INDICATED AS POSTED ARE SET AT AN APPROX. INTERVAL OF 200'. A POST WAS ALSO NEXT TO EACH FOUND OR SET CORNER EXCEPT AT THE CE1/16 BECAUSE OF ROCK.

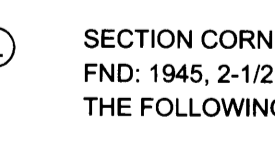
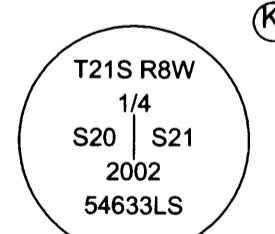
- (A) 1/4 CORNER S9/S16
 FND: 1945, 2-1/2" GLO BRASS CAP WITH THE FOLLOWING ACCESSORIES:
 41" DOUGLAS FIR BEARS S50°W, 3.6 FT
 14" DOUGLAS FIR BEARS N7-1/2°W, 27.4 FT
 12" DOUGLAS FIR BEARS N48°E, 31.2 FT
 12" DOUGLAS FIR BEARS S70°E, 35.8 FT
 ALL BT'S HAVE A HEALED FACE
- (B) SECTION CORNER S8,S9,S17,S16
 FND: 1945, 2-1/2" GLO BRASS CAP WITH THE FOLLOWING ACCESSORIES:
 17" DOUGLAS FIR BEARS S60-3/4°W, 16.5 FT (HEALED FACE)
 24" DOUGLAS FIR BEARS N70-3/4°W, 77.9 FT (HEALED FACE)
 70" DOUGLAS FIR STUMP BEARS N84-1/2° E, 24.4 FT (VISIBLE SCRIBING)
 22" DOUGLAS FIR BEARS S46-1/2°E, 93.7 FT (HEALED FACE)
- (C) 1/4 CORNER S17/S16
 FND: 1945, 2-1/2" GLO BRASS CAP WITH THE FOLLOWING ACCESSORIES:
 48" X 3' DOUGLAS FIR STUMP BEARS S60°W, 31 FT
 32" X 7' DOUGLAS FIR STUMP BEARS S37-1/2°E, 44.9 FT (VISIBLE SCRIBING)
 NEW BT'S THIS SURVEY
 12" DOUGLAS FIR BEARS S38°E, 14.5 FT (SCRIBED 1/4 S16 BT)
 14" DOUGLAS FIR BEARS S14°W, 7.0 FT (SCRIBED 1/4 S17 BT)
 14" DOUGLAS FIR BEARS N37°W, 22.6 FT (SCRIBED 1/4 S17 BT)
 9" DOUGLAS FIR BEARS N41°E, 22.4 FT (SCRIBED 1/4 S16 BT)
- (D) SECTION CORNER S17,S16,S21,S20
 FND: 1945, 2-1/2" GLO BRASS CAP WITH THE FOLLOWING ACCESSORIES:
 25" DOUGLAS FIR BEARS N54°E, 38.3FT (HEALED FACE)
 28" DOUGLAS FIR BEARS S34-1/2°W, 42.2 FT (HEALED FACE)
 11" DOUGLAS FIR BEARS N55-1/2°W, 87.1 FT (HEALED FACE)
 NEW BT THIS SURVEY
 19" DOUGLAS FIR BEARS N65°W, 18.8 FT (SCRIBED T21S R8W S17 BT")
- (E) 1/4 CORNER S16/S21
 FND: 1945, 2-1/2" GLO BRASS CAP WITH THE FOLLOWING ACCESSORIES:
 70" DOUGLAS FIR BEARS N1-1/2°W, 66.0 FT
 87" DOUGLAS FIR BEARS S37-1/4°W, 35.6 FT (HEALED FACE)
 NEW BT'S THIS SURVEY
 9" DOUGLAS FIR BEARS S65°W, 9.1 FT (SCRIBED 1/4 S21 BT)
 12" DOUGLAS FIR BEARS N27°E, 12.0 FT (SCRIBED 1/4 S16 BT)
- (F) SECTION CORNER S16,S17,S22,S21
 FND: 1954, 2-1/2" BLM BRASS CAP WITH THE FOLLOWING ACCESSORIES:
 2" BRASS CAP RM, 1954 BEARS S38°E, 33.0 FT
 2" BRASS CAP RM, 1954 BEARS N38°W, 33.0 FT
 2" BRASS CAP WC, 1945 BEARS N0°50'E, 6.6 FT
 NEW BT'S THIS SURVEY
 11" DOUGLAS FIR BEARS S26°W, 3.2 FT (SCRIBED T21S R8W S21 BT)
 11" DOUGLAS FIR BEARS N74°E, 10.1 FT (SCRIBED T21S R8W S15 BT)
- (G) 1/4 CORNER S16/S15
 FND: 1945, 2-1/2" GLO BRASS CAP WITH THE FOLLOWING ACCESSORIES;
 BOTH ORIGINAL BT'S EITHER MISSING OR ROTTED
 NEW BT'S THIS SURVEY
 18" DOUGLAS FIR BEARS N36°W, 14.3 FT (SCRIBED 1/4 S16 BT)
 11" DOUGLAS FIR BEARS N10°E, 6.1 FT (SCRIBED 1/4 S15 BT)
 18" DOUGLAS FIR BEARS N77°E, 5.7 FT (SCRIBED 1/4 S15 BT)
 16" DOUGLAS FIR BEARS S52°W, 10.0 FT (SCRIBED 1/4 S16 BT)
- (H) SECTION CORNER S9,S10,S15,S16
 FND: 1945, 2-1/2" GLO BRASS CAP WITH THE FOLLOWING ACCESSORIES;
 72" DOUGLAS FIR STUMP BEARS N43°W, 18.0 FT TO FACE
 44" DOUGLAS FIR STUMP BEARS S42°E, 20.1 FT
 44" DOUGLAS FIR STUMP BEARS S1°E, 40.2 FT
 48" DOUGLAS FIR STUMP BEARS N4°W, 161.0 FT
 24" DOUGLAS FIR BEARS N48°E, 7.4 FT (HEALED FACE)
 15" DOUGLAS FIR BEARS S19°E, 11.2 FT (HEALED FACE)
 15" MAPLE BEARS S40°W, 39.3 FT (OPEN FACE)
 17" DOUGLAS FIR BEARS N68°W, 26.5 FT (HEALED FACE)
 1954, 2" BRASS CAP RM BEARS n22-1/2°E, 13.2 FT
 1954, 2" BRASS CAP RM BEARS S22-1/2°W, 13.2 FT
- (I) E1/16 CORNER S9/S16
 FND: 3-1/2" ALUMINUM CAP, 1995, LS2006 WITH THE FOLLOWING ACCESSORIES;
 16" DOUGLAS FIR BEARS N59°E, 19.7 FT
 11" DOUGLAS FIR BEARS S64°W, 18.1 FT
- (J) CE1/16 CORNER S16
 SET: 2-1/2" ALUMINUM CAP ATTACHED TO A 5/8" X 6" REBAR SET IN A SANDSTONE FACE MARKED AS SHOWN WITH THE FOLLOWING ACCESSORIES;
 9" DOUGLAS FIR BEARS S53°W, 8.4 FT (SCRIBED CE1/16 S16 BT)
 14" DOUGLAS FIR BEARS N29°W, 9.1 FT (SCRIBED CE1/16 S16 BT)
- (K) 1/4 CORNER S20/S21
 SET: 2-1/2" ALUMINUM CAP ON A 5/8" X 36" REBAR MARKED AS SHOWN WITH THE FOLLOWING ACCESSORIES;
 19" DOUGLAS FIR BEARS N35°E, 40.6 FT (SCRIBED 1/4 S21 BT)
 13" DOUGLAS FIR BEARS N01°E, 14.4 FT (SCRIBED 1/4 S21 BT)
 9" DOUGLAS FIR BEARS S75°W, 8.1 FT (SCRIBED 1/4 S20 BT)
 14" DOUGLAS FIR BEARS S38°W, 25.8 FT (SCRIBED 1/4 S20 BT)
- (L) SECTION CORNER S20,S21,S28,S29
 FND: 1945, 2-1/2" GLO BRASS CAP WITH THE FOLLOWING ACCESSORIES;
 11" DOUGLAS FIR BEARS N26°E, 26.0 FT (OPEN FACE)
 8" MADRONE BEARS S83°W, 39.2 FT (OPEN FACE)
 NEW BT'S THIS SURVEY
 8" DOUGLAS FIR BEARS S88-1/2°W, 40.5 FT (SCRIBED T21S R8W S29 BT)
 7" DOUGLAS FIR BEARS S70-3/4°E, 59.2 FT (SCRIBED T21S R8W S28 BT)



FILED
 Date: 11/12/2002 By: JP
 This survey consists of:
 Map: M141-12
 Narrative: _____
 Corner Rpt: _____
DOUGLAS COUNTY
SURVEYOR

LEGEND

- CORNER SET THIS SURVEY AS NOTED HEREON
- CORNER SET THIS SURVEY AS NOTED HEREON
- FND. MONUMENT AS NOTED HEREON
- FND. MONUMENT AS NOTED HEREON
- FND. MONUMENT AS NOTED HEREON
- FND. MONUMENT AS NOTED HEREON
- LINE POSTED WITH 5-1/2 FOOT GALVANIZED STEEL FENCE POSTS, LINE ALSO BLAZED AND PAINTED WITH RED RIBBON & RED PAINT
- RECORD DATA
- 1949 G.L.O. DEPENDENT RESURVEY
- COMPUTED POSITION
- NO MONUMENT SET
- GENERAL LAND OFFICE



FILE NAME		
02-53EX.TRV		
SCALE	DATE	DRAWN BY
800 Ft/In	10-30-2002	RBW
JOB	REVISION	SHEET
02-53	---	1/1

REGISTERED PROFESSIONAL LAND SURVEYOR

 OREGON
 JULY 9, 2002
 RONALD L. RICE
 54633LS
 EXPIRES: 12-31-2002

Ward NorthWest, Inc.
 P.O. BOX 105 FLORENCE, OR 97439
 (541) 997-9201 FAX: 541-997-3546

NARRATIVE

THE PURPOSE OF THIS SURVEY WAS TO ESTABLISH THE LINES AND CORNERS AS SHOWN ON THIS MAP.

IN 1945, A G.L.O. DEPENDENT RE-SURVEY WAS PERFORMED BY NORM PRICE. IN 1954, THE SE CORNER OF SECTION 16 WAS RE-SET BY THE BLM. ALL CORNERS SHOWN AS FOUND WERE HELD AS CONTROL FOR THIS SURVEY.

THE 1/4 CORNER BETWEEN SECTION 20 & 21 WAS NOT RECOVERED. BEARING TREES WERE ALSO SEARCHED FOR BUT NOT FOUND. THIS CORNER WAS RESET BY PROPORTIONATE MEASURE AS SHOWN ON THIS MAP.

THE CE1/16 CORNER WAS SET PER THE BLM 1973 MANUAL OF SURVEY INSTRUCTION.

THE BASIS OF BEARING FOR THIS SURVEY WAS THE WEST 1/2 OF THE NORTH LINE OF SECTION 16 AS INDICATED ON THIS MAP.

THIS SURVEY WAS PERFORMED USING A PENTAX TOTAL STATION.