




# PROPERTY SURVEY

SECTION 36, T.27 S., R.8 W., W.M.  
DOUGLAS COUNTY, OREGON  
AUGUST, 2002

**SURVEY BY:**  
HOSTETTER LAND SURVEYING  
63538 PINTAIL DR.  
COOS BAY, OR 97420

**SURVEY FOR:**  
SENECA JONES TIMBER COMPANY  
P O BOX 2129  
ROSEBURG, OREGON 97470

## LEGEND:

- CORNER FOUND: 
- CORNER SET: 
- LINE BLAZED 
- RECORD DISTANCE:  
GLO ( 20.41 CH )

### CORNER NOTES:

1. FOUND: 1 1/2" IRON PIPE W/ 1958 BRASS CAP AS DESCRIBED IN 2001 ( M138-86 ).
2. FOUND 3 BTS MARKED BY WEYERHAEUSER COMPANY ( ACCORDING TO WEYCO RECORDS 2 ORIGINAL GLO BTS WERE FOUND WITH VISIBLE SCRIBING IN 1952. THE CORNER POSITION WAS MONUMENTED WITH A 1/2" ALLOY PIPE AT THAT TIME. SUBSEQUENT RECORDS INDICATE THAT THE BEARING TREES PRESENT NOW REFERENCE THE CORNER POSITION AS MARKED BY THE 1/2" PIPE, WHICH HAS EVIDENTLY BEEN REMOVED BY LOGGING. NO EVIDENCE OF THE ORIGINAL BTS REMAIN ).  
SET: 5/8" X 3/8" REBAR W/ 2 1/2" CAP MARKED " S25 S36 1/4 LS1975 2002 " FROM WEYCO BT INFORMATION FROM WHICH:  
12" FIR, WEYCO TAG, BEARS N 7 1/2", 15.6 FEET.  
50" FIR STUMP, WEYCO TAG, BEARS S 38"E, 14.6 FEET TO FACE.  
14" CEDAR, WEYCO TAG, BEARS S 20"W, 9.1 FEET.  
NEW BTS:  
10" FIR, SCRIBED " S25 1/4 BT ", BEARS N 52"E, 22.3 FEET TO SPIKE.  
14" FIR, SCRIBED " S36 1/4 BT ", BEARS: S 40"E, 8.9 FEET TO SPIKE.
3. FOUND 1961 BRASS CAP AND ACCESSORIES AS DESCRIBED BY DOUGLAS COUNTY SURVEYOR IN 1997 ( 64/74-34 ).
4. SET: 5/8" X 3/8" REBAR W/ 2 1/2" CAP MARKED " S36 NE 1/16 LS1975 2002 "  
FROM WHICH:  
40" FIR, SCRIBED " S36 1/16 BT ", BEARS N 59"E, 27.5 FEET TO SPIKE.  
26" FIR, SCRIBED " S36 1/16 BT ", BEARS: S 34"E, 38.8 FEET TO SPIKE.
5. FOUND: CEDAR FENCE POST ( CORNER MONUMENT ) AND ACCESSORIES AS DESCRIBED BY DOUGLAS COUNTY SURVEYOR IN 1997 ( 64/74-22 )
6. FOUND: 1979 BRASS CAP SET BY REPPETO ( 58/219 ).  
FROM WHICH:  
18" FIR, FACE EVIDENT, WEYCO AND CHAMPION TAGS, BEARS: S 89"W, 5.7 FEET TO "W" NAIL.  
NEW BTS:  
20" FIR, SCRIBED " S36 1/4 BT ", BEARS: N 14\*40"E, 39.2 FEET TO SPIKE.  
18" FIR, SCRIBED " S36 1/4 BT ", BEARS: N 57\*46"E, 28.4 FEET TO SPIKE.  
16" FIR, SCRIBED " S36 1/4 BT ", BEARS: S 45\*04"E, 25.00 FEET TO SPIKE.
7. SET: 5/8" X 3/8" REBAR W/ 2 1/2" CAP MARKED " S36 CW1/16 LS1975 2002 "  
FROM WHICH:  
20" FIR, SCRIBED " S36 1/16 BT ", BEARS: N 82\*07"E, 28.9 FEET TO SPIKE.  
24" FIR, SCRIBED " S36 1/16 BT ", BEARS N 84\*27"W, 19.3 FEET TO SPIKE.
8. SET: 5/8" X 3/8" REBAR W/ 2 1/2" CAP MARKED " S36 CE1/16 LS1975 2002 "  
FROM WHICH:  
26" FIR, SCRIBED " S36 1/16 BT ", BEARS: N 52"E, 2.2 FEET TO SPIKE.  
22" FIR, SCRIBED " S36 1/16 BT ", BEARS S 55"W, 20.1 FEET TO SPIKE.
9. FOUND: 1958 BRASS CAP AND ACCESSORIES AS DESCRIBED BY DOUGLAS COUNTY SURVEYOR IN 1997 ( 64/74-23 ).
10. SET: 5/8" X 3/8" REBAR W/ 2 1/2" CAP MARKED " S36 SW1/16 LS1975 2002 "  
FROM WHICH:  
22" FIR, SCRIBED " S36 1/16 BT ", BEARS: N 22\*29"E, 37.4 FEET TO SPIKE.  
16" FIR, SCRIBED " S36 1/16 BT ", BEARS S 60\*24"W, 8.8 FEET TO SPIKE.
11. SET: 5/8" X 3/8" REBAR W/ 2 1/2" CAP MARKED " S35 S36 1/16 LS1975 2002 "  
FROM WHICH:  
14" FIR, SCRIBED " S36 1/16 BT ", BEARS: S 52"E, 21.7 FEET TO SPIKE.  
16" FIR, SCRIBED " S35 1/16 BT ", BEARS N 62"W, 24.4 FEET TO SPIKE.
12. FOUND: 1961 BRASS CAP AND ACCESSORIES AS DESCRIBED BY BLM ( VOL. 30, PG. 12859 ).
13. FOUND: 1979 BRASS CAP AND ACCESSORIES AS DESCRIBED BY REPPETO ( 58/219 )  
FROM WHICH:  
NEW BTS:  
14" FIR, MARKED W/ "X", BT TAG, BEARS S75"E, 16.8 FEET TO CENTER.  
14" FIR, MARKED W/ "X", BT TAG, BEARS S10"W, 42.5 FEET TO CENTER.  
AMENDED SECTION CORNER ON TOWNSHIP LINE ( NOT MONUMENTED ) BEARS: S 01\*12\*53"E, 4.58 FEET.
14. FOUND: 1961 BRASS CAP AND ACCESSORIES AS DESCRIBED BY R.G. GEISLER IN 1986 ( M90-79 ).
15. FOUND: 1961 BRASS CAP AS SET BY DOUGLAS COUNTY SURVEYOR ( 49/12 )  
FROM WHICH:  
24" FIR, FACE EVIDENT, BT TAG, BEARS: N 6 1/2"E, 33.9 FEET.  
ROTTEN FIR WINDFALL, BT TAG, BEARS: N 80"W, 89.6 FEET  
NEW BTS:  
18" CEDAR, SCRIBED " S36 1/4 BT ", BEARS: S 76"E, 7.7 FEET TO SPIKE.  
20" FIR, SCRIBED " S36 1/4 BT ", BEARS: S 88"W, 35.8 FEET TO SPIKE.  
AMENDED CORNER ON TOWNSHIP LINE ( NOT MONUMENTED ) BEARS N 00\*13\*41"E, 78.91 FEET.
16. FOUND: 1 1/2" IRON PIPE AND BTS AS DESCRIBED BY R.G. GEISLER ( M90-79 )  
NEW BTS:  
22" FIR, SCRIBED " S1 1/4 BT ", BEARS: N 42"E, 50.7 FEET TO SPIKE.  
20" OAK, SCRIBED " S1 1/4 BT ", BEARS: N 04"E, 73.5 FEET TO SPIKE.

### NARRATIVE:

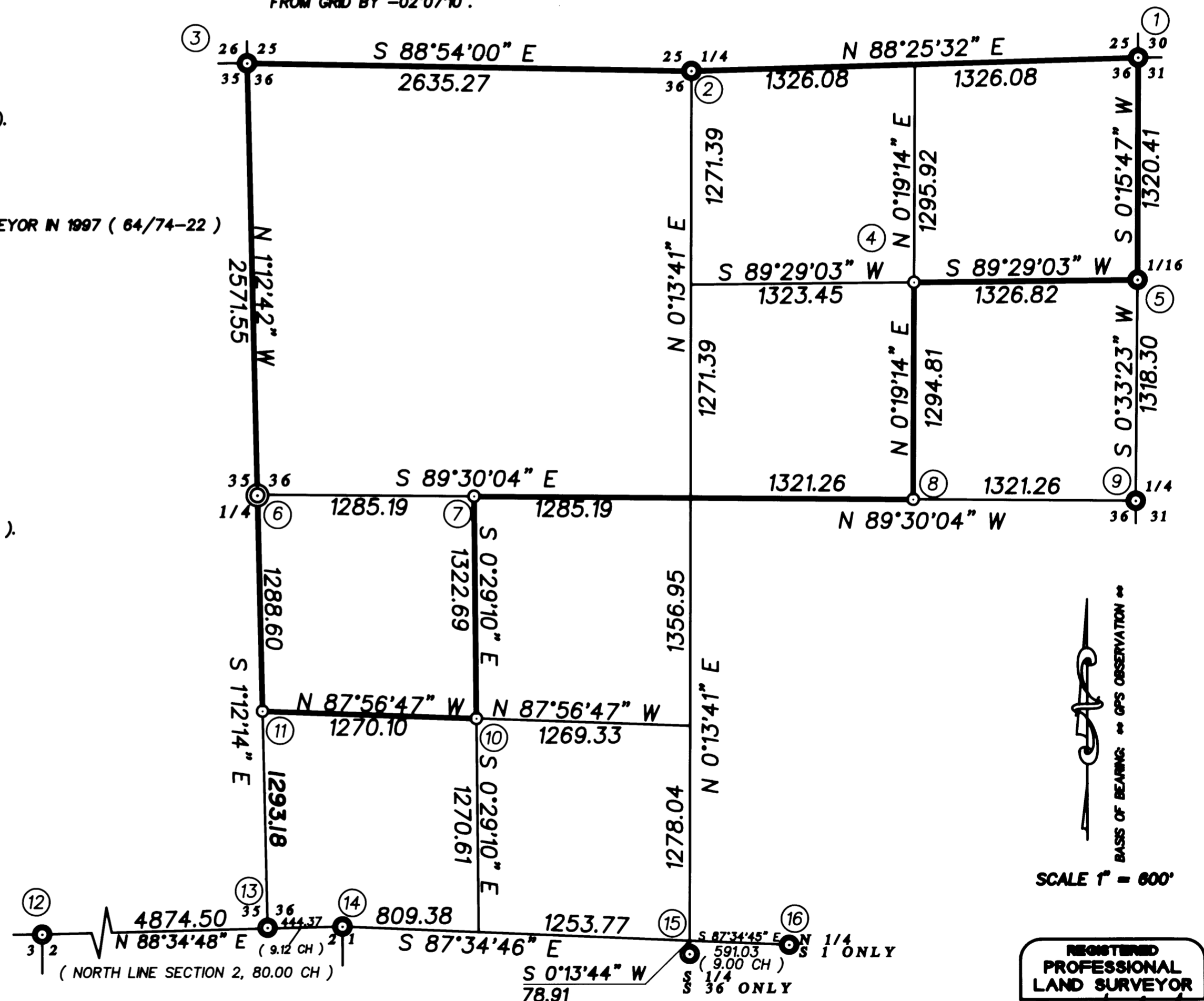
THIS SURVEY WAS PERFORMED IN ORDER TO DETERMINE PROPERTY BOUNDARIES AS SHOWN. OFFSETS TO TRUE LINE WERE CALCULATED, LINE WAS MARKED BY RED FLAGGING AND 5 1/2 FOOT STEEL FENCE POSTS PLACED ALONG LINE ( 150' TO 200' APART ). BOTH SIDES OF LINE WERE BLAZED AND PAINTED.

THE SOUTH BOUNDARY OF THIS SECTION WAS ORIGINALLY SURVEYED IN 1896 BY W.P. HEYDEN WHICH WAS A RETRACEMENT OF A PREVIOUS SURVEY OF SECTIONS 1 & 2, T.28 S., R.8 W. ( 1855 BY D. HATHORN ). CORNERS SET IN 1896 WERE TREATED IN THE SAME MANNER DESCRIBED FOR CLOSING CORNERS IN THE "BLM MANUAL" AS FOLLOWS: THE C 1/4 WAS CALCULATED AT THE INTERSECTION OF 1/4 CORNERS USING THE S 1/4 CORNER AS MONUMENTED BY THE DOUGLAS COUNTY SURVEYOR IN 1961. THE CS 1/16 WAS CALCULATED AT THE MIDPOINT OF LINE BETWEEN THE C 1/4 AND S 1/4 CORNERS AS DESCRIBED ABOVE. THE S 1/16 ON THE WEST LINE WAS ESTABLISHED AT THE MIDPOINT OF LINE BETWEEN THE W 1/4 AND SW SECTION CORNER AS MONUMENTED BY REPPETO IN 1979. THE W 1/16 CORNER ON THE SOUTH LINE OF SECTION 36 WAS CALCULATED AT PROPORTIONATE DISTANCE ALONG THE AMENDED SECTION LINE AS DETERMINED BY FOUND MONUMENTS FOR SECTIONS 1 & 2. THE AMENDED CORNER POSITIONS FOR SECTION 36 WERE NOT MONUMENTED ( SEE CORNER NOTES FOR RELATIONSHIP BETWEEN FOUND MONUMENTS AND AMENDED CORNER POSITIONS ).

BEARING TREE MEASUREMENTS TO ORIGINAL AND OTHER FOUND BTS ARE LISTED TO THE CENTER OF THE TREE UNLESS OTHERWISE NOTED. MEASUREMENTS LISTED FOR BTS MARKED IN THIS SURVEY ARE TO THE HEAD OF 8" SPIKES PLACED IN ROOT COLLARS (BELOW FACE). TAGS PLACED ON ALL NEW BEARING TREES LIST BEARING AND DISTANCE FROM SPIKE TO CORNER MONUMENT.

EQUIPMENT USED INCLUDED A NIKON NPL-820 TOTAL STATION AND 3 ASHTECH LOCUS GPS RECEIVERS. BEARINGS ARE BASED ON STATIC GPS OBSERVATIONS AND HAVE BEEN ROTATED FROM GRID BY -02\*07\*10'.

FILED  
Date: 9-11-2002 By: JC  
This survey consists of:  
Map: M140-72  
Narrative:  
Corner Rpt:  
DOUGLAS COUNTY SURVEYOR



BASES OF BEARING: GPS OBSERVATION  
SCALE 1" = 600'

REGISTERED PROFESSIONAL LAND SURVEYOR  
TONY HOSTETTER  
OREGON JAN 19, 1982  
1975  
EXPIRES: 6/30/03

MAP FILE M140-72

MAP FILE M140-72