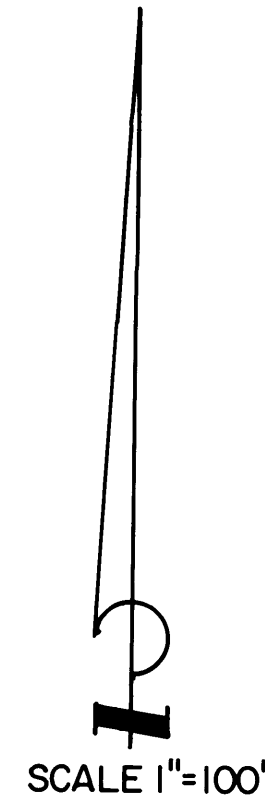
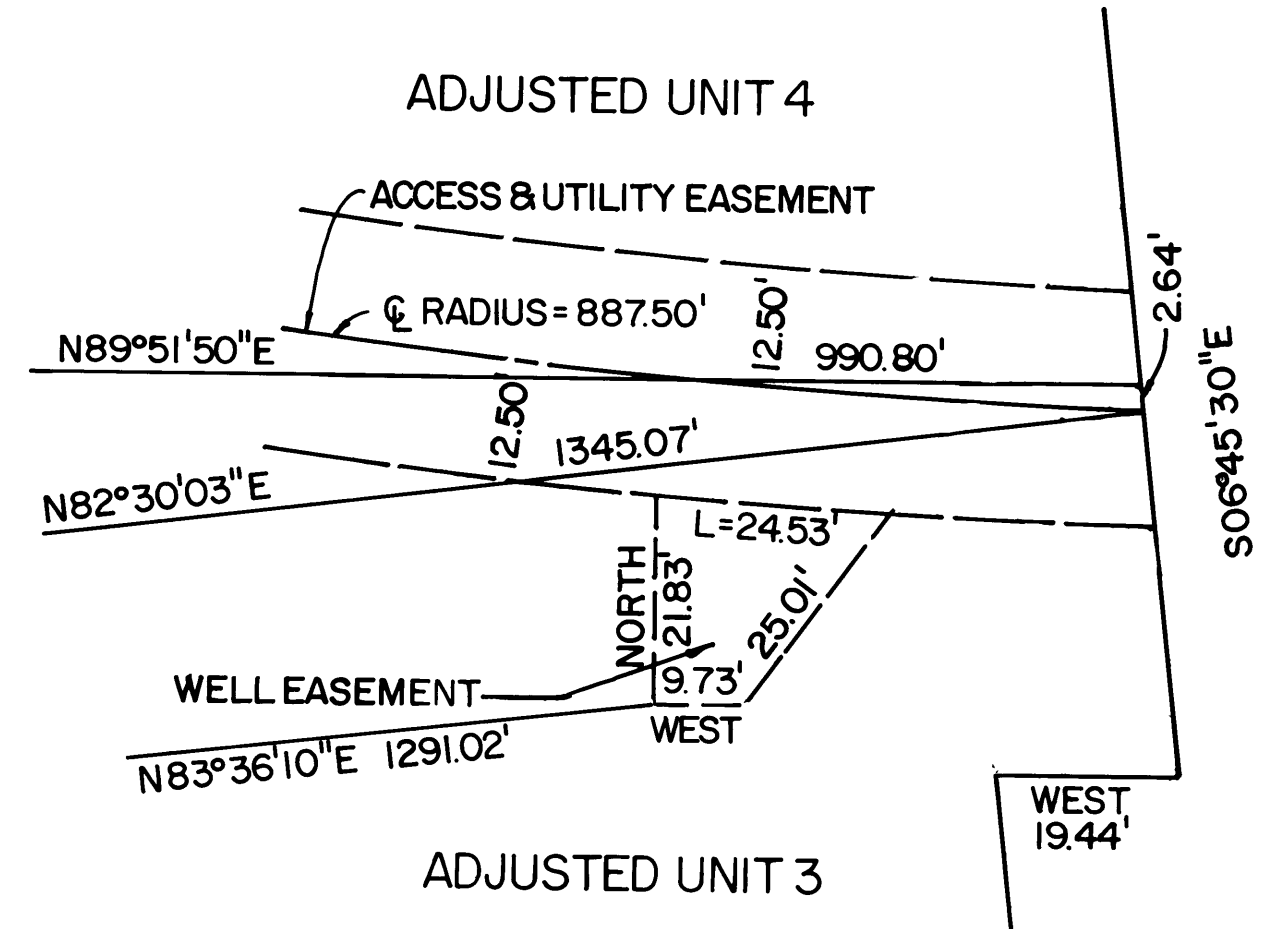
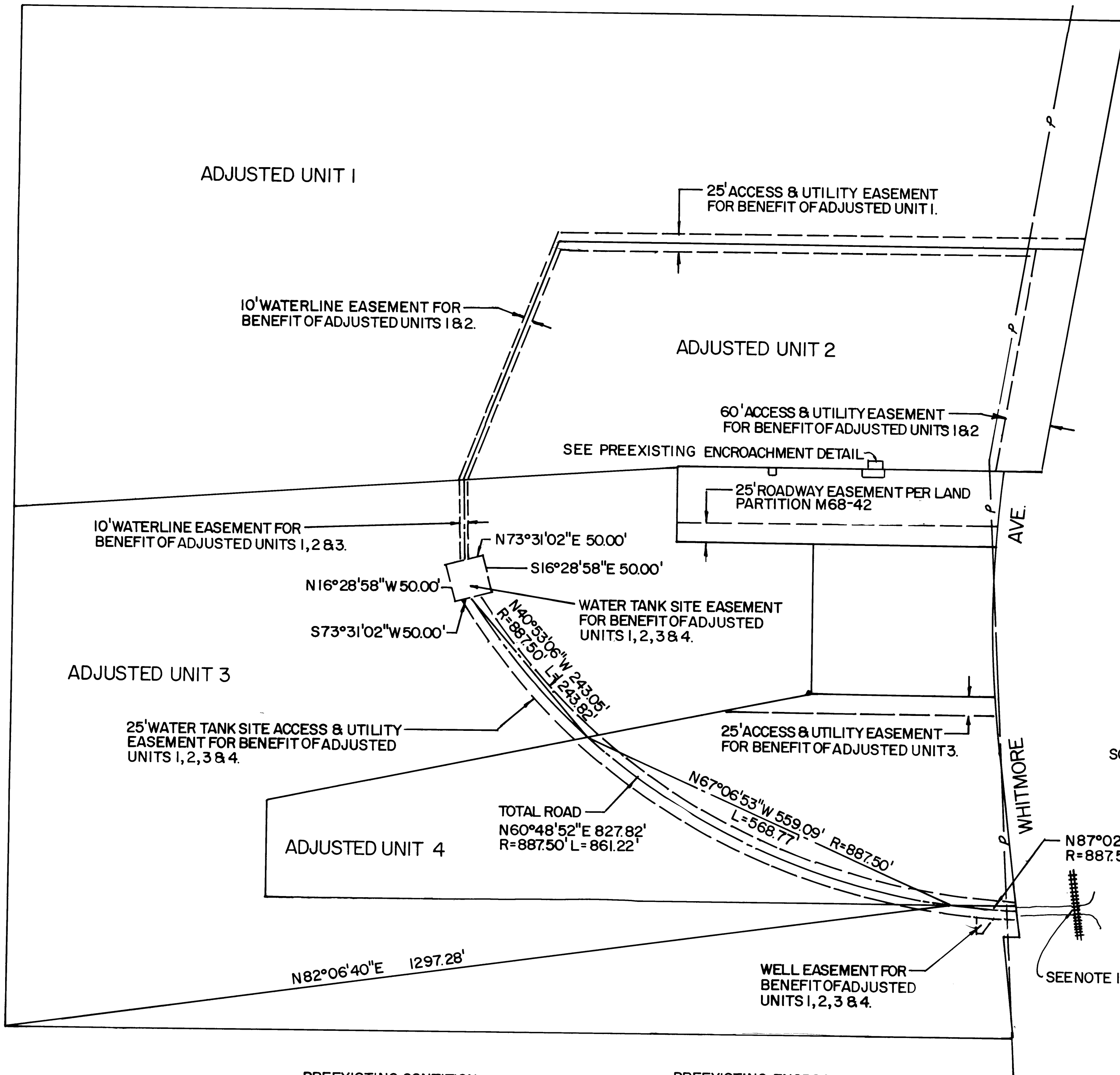
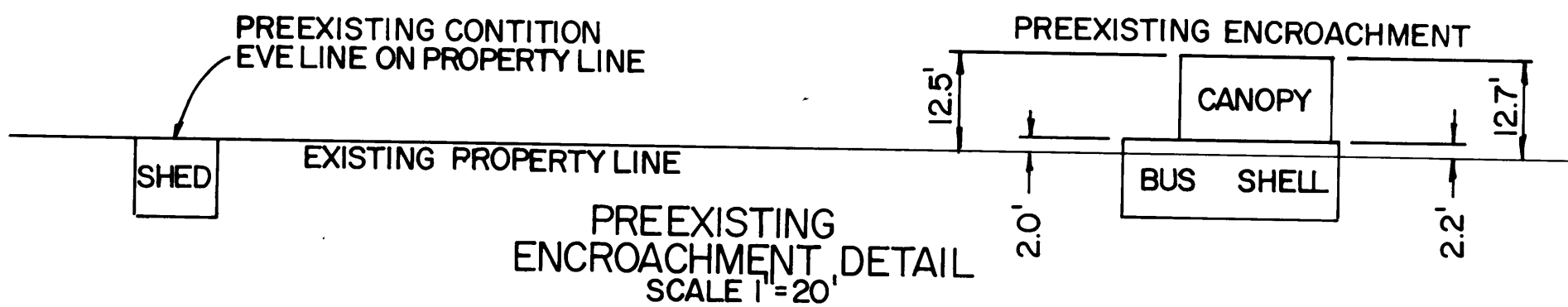


FILED  
 Date: 5/9/2002 By: JP  
 This survey consists of:  
 Map: M 140-5 B  
 Narrative:  
 Corner Rpt:  
 DOUGLAS COUNTY  
 SURVEYOR

NOTE:  
 I. RAILROAD CROSSING = C.O. & P. RR INC.  
 OCCUPANCY LICENSE NO. CORP 010706.



BOUNDARY LINE ADJUSTMENT SURVEY  
 FOR  
**SOUTH VALLEY ENTERPRISES INC.**  
 NW 1/4 & NE 1/4 SECTION 17, T25S, R5W, W.M.  
 DOUGLAS COUNTY, OREGON



REGISTERED  
 PROFESSIONAL  
 LAND SURVEYOR  
*Donald E. Wolford*  
 OREGON  
 JANUARY 19, 1993  
 DONALD E. WOLFORD  
 2602  
 PLSEXPRES 6/30/2002

WOLFORD LAND SURVEYING LLC  
 87180 MUNSEL LAKE ROAD  
 FLORENCE, OR 97439  
 (541) 997-4455

MAP FILE M 140-5 B

MAP FILE M 140-5 B