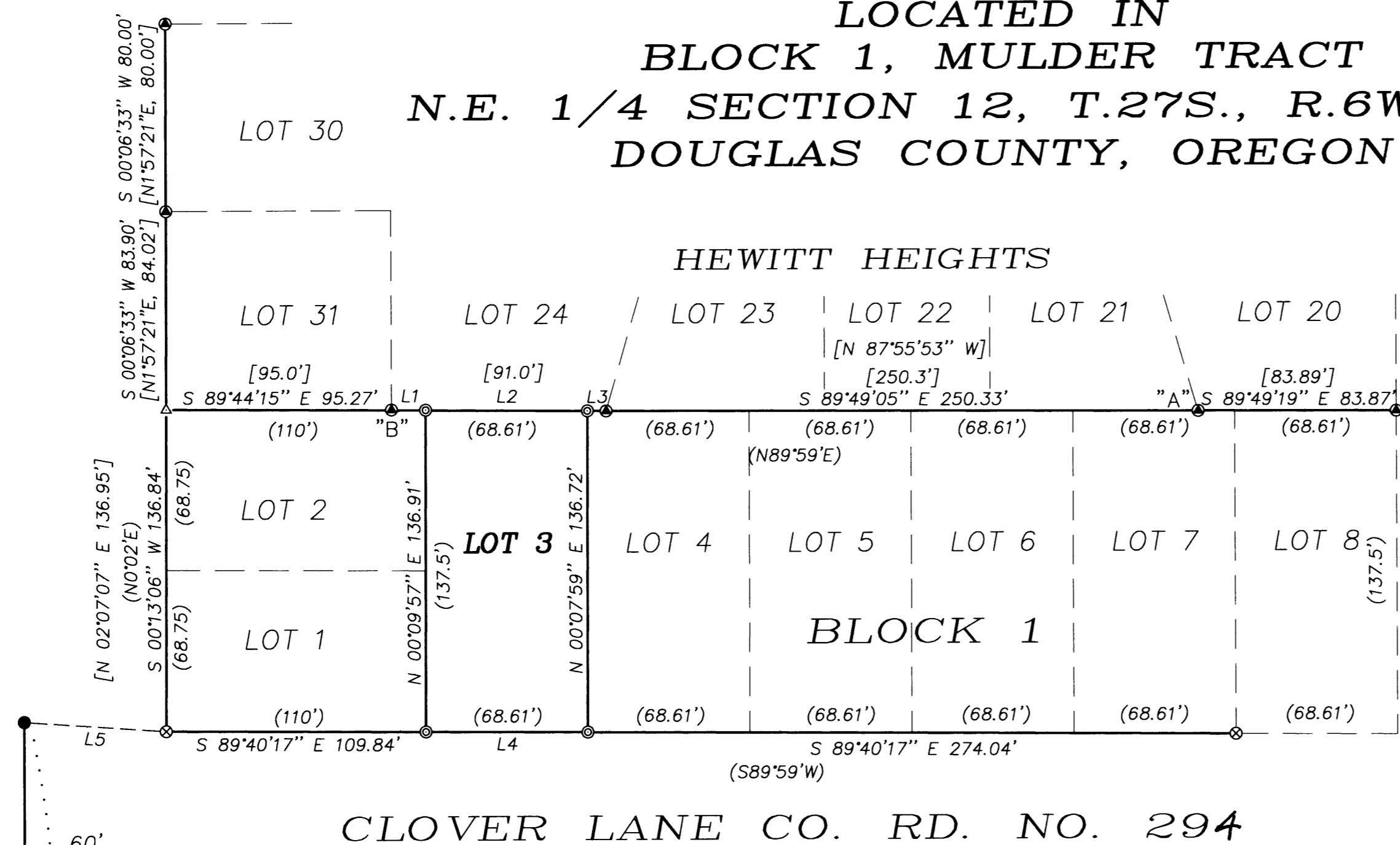


RECORD OF SURVEY

LOCATED IN
BLOCK 1, MULDER TRACT
 N.E. 1/4 SECTION 12, T.27S., R.6W., W.M.
 DOUGLAS COUNTY, OREGON

FILED
 Date: 8/7/2002 By: JP
 This survey consists of:
 Map: M 140-52
 Narrative: _____
 Corner Rpt: _____

DOUGLAS COUNTY
 SURVEYOR



NE VINE STREET

KERR STREET

NUMBER	DIRECTION	DISTANCE	RECORD
L1	S 89°30'54" E	14.44'	
L2	S 89°30'54" E	68.43'	
L3	S 89°30'54" E	7.95'	
L4	S 89°40'17" E	68.51'	
L5	S 85°59'38" E	60.24'	[N89°01'03"W, 60.45']

NARRATIVE:

THE PURPOSE OF THIS SURVEY WAS TO MONUMENT THE CORNERS OF LOT 3, BLOCK 1, MULDER TRACT. MONUMENTS FOUND PER MULDER TRACT AND HEWITT HEIGHTS CONTROLLED THIS SURVEY. THE SE AND SW CORNERS OF LOT 3 WERE COMPUTED AT PROPORTIONATE DISTANCE BETWEEN THE SW CORNER OF LOT 1 AND THE SE CORNER OF LOT 7. THE NW CORNER OF BLOCK 1 WAS COMPUTED AT THE INTERSECTION OF THE BEARINGS OF THE WEST LINE OF LOT 30 AND A LINE BETWEEN MONUMENT "A" AND MONUMENT "B" OF HEWITT HEIGHTS. THIS POSITION CLOSELY MATCHES THE HEWITT HEIGHT RECORD BETWEEN THE NW CORNER OF LOT 31 AND THE SW CORNER OF LOT 1, BLOCK 1, MULDER TRACT. THE NE AND NW CORNERS OF LOT 3 WERE THEN COMPUTED AT PROPORTIONATE DISTANCE BETWEEN THE NE AND NW CORNERS OF BLOCK 1 AND SET ON THE SOUTH LINE OF LOT 24 OF HEWITT HEIGHTS. THIS SURVEY WAS PERFORMED BY MATT DIXON, MICKEY CALVERT AND ADAM DEGROOT USING A NIKON DTM 531 TOTAL STATION AND A SOKKIA SET 5 TOTAL STATION WITH COMPUTATIONS BY KRIS DEGROOT AND DRAFTING BY BILL WARREN.

LEGEND:

- ⊙ = SET 5/8" X 30" IRON ROD w/PLASTIC CAP MARKED "BTS ENG-SURV".
- = FOUND 5/8" IRON ROD PER HEWITT HEIGHTS (VOL.15, PG. 31A&B)
- ⊗ = FOUND 1/2" IRON ROD PER MULDER TRACT (VOL.9, PG.36)
- ⊙ = FOUND 1/2" IRON PIPE PER CLOVER KERR SUBDIVISION (VOL. 6, PG. 29)
- = FOUND 5/8" IRON ROD PER M 119-72
- △ = COMPUTED POINT NOT SET
- () = RECORD PER MULDER TRACT (VOL.9, PG.36)
- [] = RECORD PER HEWITT HEIGHTS (VOL.15, PG. 31A&B)

REGISTERED
 PROFESSIONAL
 LAND SURVEYOR

Kristian O. Degroot

OREGON
 JULY 17, 1981
 KRISTIAN O. DEGROOT
 1941

RENEWAL DATE: 12-31-03

MAP FILE M140-52

MAP FILE M140-52

BTS ENGINEERING & SURVEYING, INC.
 431 S.E. MAIN ST., ROSEBURG, OR 97470
 PHONE (541) 673-0966 FAX (541) 673-0105

SCALE: 1" = 50'
 DATE: AUGUST 5, 2002

KING BISCUIT LLC
 FOR: 5834 WATSON DRIVE
 FORT COLLINS, CO. 80528

JOB #: 02-058
 KING-BIS.DWG
 SHEET 1 OF 1

**COUNTY SURVEYORS FILE DATA
 DO NOT REMOVE FROM OFFICE**