

FILED  
 Date: 4-29-2002 By: JC  
 This survey consists of:  
 Map: M140-3  
 Number:  
 Corner Sp:

DOUGLAS COUNTY  
 CLERK

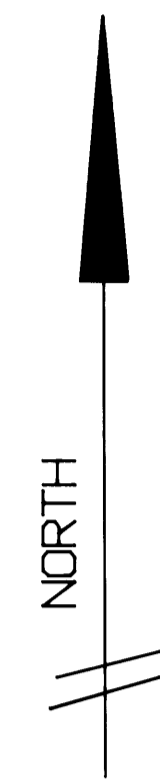
MAP FILE M140-3

# TOWNSHIP 29 SOUTH RANGE 8 WEST SW 1/4 SECTION 2 DOUGLAS COUNTY, OREGON

SURVEY FOR SENECA JONES TIMBER COMPANY

**GARY T. SMITHER**  
**OREGON SURVEYOR**  
 P.O. BOX 545, NORTH BEND, OREGON 97459  
 FAX & PHONE: (541) 751-9624

- LEGEND**
- MONUMENT FOUND AS NOTED
  - SET 5/8" x 36" IRON ROD WITH 2 1/2" ALUMINUM CAP MARKED AS NOTED WITH 5 1/2" STEEL FENCE POST DRIVEN NEAR CORNER
  - MONUMENT OF RECORD NOT TIED THIS SURVEY
  - BOLD LINE REPRESENTS LINES RUN WITH TRUE LINES BLAZED AND PAINTED WITH RED TREE MARKING PAINT AND FLAGGED WITH RED FLAGGING AND 5 1/2" STEEL FENCE POST ESTABLISHED AT INTERVALS NOT TO EXCEED 200 FEET ALONG THE TRUE LINE WITH THE TOPS PAINTED RED
  - REPRESENTS LINES NOT RUN THIS SURVEY
  - CALC. - CALCULATED VALUES FROM MEASURED CORNERS TO RECORD CORNERS SEE NARRATIVE AND RECORD SURVEY M65-8
  - REC. - RECORDED SURVEY VALUES FROM M65-8
  - MEAS. - VALUES MEASURED AS A RESULT OF THIS SURVEY



DATE OF SURVEY APRIL 18, 2002  
 SCALE OF DRAWING 1" = 400 FEET

**SURVEY NARRATIVE**

THIS SURVEY WAS CONDUCTED FOR SENECA JONES TIMBER COMPANY TO LOCATE CERTAIN BOUNDARIES IN THE SW 1/4 OF SECTION 2. BEARINGS WERE BASED ON COUNTY RECORD SURVEY 46/21 WHICH ILLUSTRATES A MAGNETIC DECLINATION OF 2'15". INDICATING TRUE BEARING. THE MONUMENTS THAT CONTROLLED THIS SURVEY ARE SHOWN AS FOUND AND OF RECORD IN COUNTY SURVEY M65-8.

WE RAN AN ALTERNATE POINT TRAVERSE ALONG THE ILLUSTRATED BOLD LINES WITH A CLOSURE OF 1:3850. WE ESTABLISHED OUR BASIS OF BEARING BETWEEN THE SOUTHWEST CORNER OF SECTION 2 AND THE W1/6 OF SECTIONS 2 AND 11 TO BE THE SAME AS THAT BEARING IN CS 46/21(M65-8). TRAVERSING IN A COUNTER CLOCKWISE DIRECTION FROM THE SOUTHWEST CORNER OF SECTION 2 TO THE W1/4 OF SECTION 2 WE CLOSED 1:5800. COMPARING MEASURED TO RECORD COORDINATES.

IN ORDER TO LOCATE THE C1/4 OF SECTION 2 WE PLACED BOTH THE RECORD SURVEY M65-8 AND OUR RETRACEMENT OF THE M65-8 SURVEY ON THE SAME SET OF COORDINATES. WE HELD THE RECORD COORDINATES OF THE E1/4 AND N1/4 AND THE MEASURED COORDINATES OF THE W1/4 AND THE C1/4 TO PERFORM AN INTERSECTION FOR THE MONUMENTATION OF THE C1/4. ALL RECORD, MEASURED, AND CALCULATED VALUES ARE SHOWN ON THIS PLAT AND DESCRIBED IN THE LEGEND.

PRIOR TO CONDUCTING THIS SURVEY A SEARCH OF THE RECORD INDICATES THAT ALL RECORD CORNERS AND FOUND CORNERS ILLUSTRATED ON THIS PLAT FOR THE CONTROL AND SUBDIVISION OF SECTION 2 WERE ESTABLISHED BY PROCEDURE OUTLINED IN THE 1973 MANUAL OF SURVEYING INSTRUCTIONS.

**ORIGINAL W1/4 CORNER SECTION 2**  
 FOUND 1958 DOUGLAS COUNTY IRON PIPE WITH BRASS CAP WITH STEEL FENCE POST PER C.S FILE 49/100

36" ROTTED FIR STUMP N 55° W, 28.4 FEET WITH VISIBLE SCRIBE "B" WITH OLD TAG

15" CEDAR S 62° E, 11.2 FEET WITH HEALED FACE AND OLD TAG

21" D. FIR N 24° W, 70.5 FEET WITH HEALED FACE AND OLD TAG

NEW BEARING TREES:

12" CEDAR S 61° W, 14.9 FEET TO SPIKE SET SIDE CENTER, SCRIBED "T29 R8 1/4 S3 BT" WITH TAG

21" D. FIR N 23° E, 13.3 FEET TO SPIKE SET SIDE CENTER, SCRIBED "T29 R8 1/4 S2 BT" WITH TAG

**ORIGINAL SOUTHWEST CORNER SECTION 2**  
 FOUND 1972 BUREAU OF LAND MNGMT IRON PIPE WITH BRASS CAP WITH STEEL FENCE POST PER M42-67

27" LAUREL N 57° E, 22.4 FEET FACE ROTTED OUT WITH OLD TAG

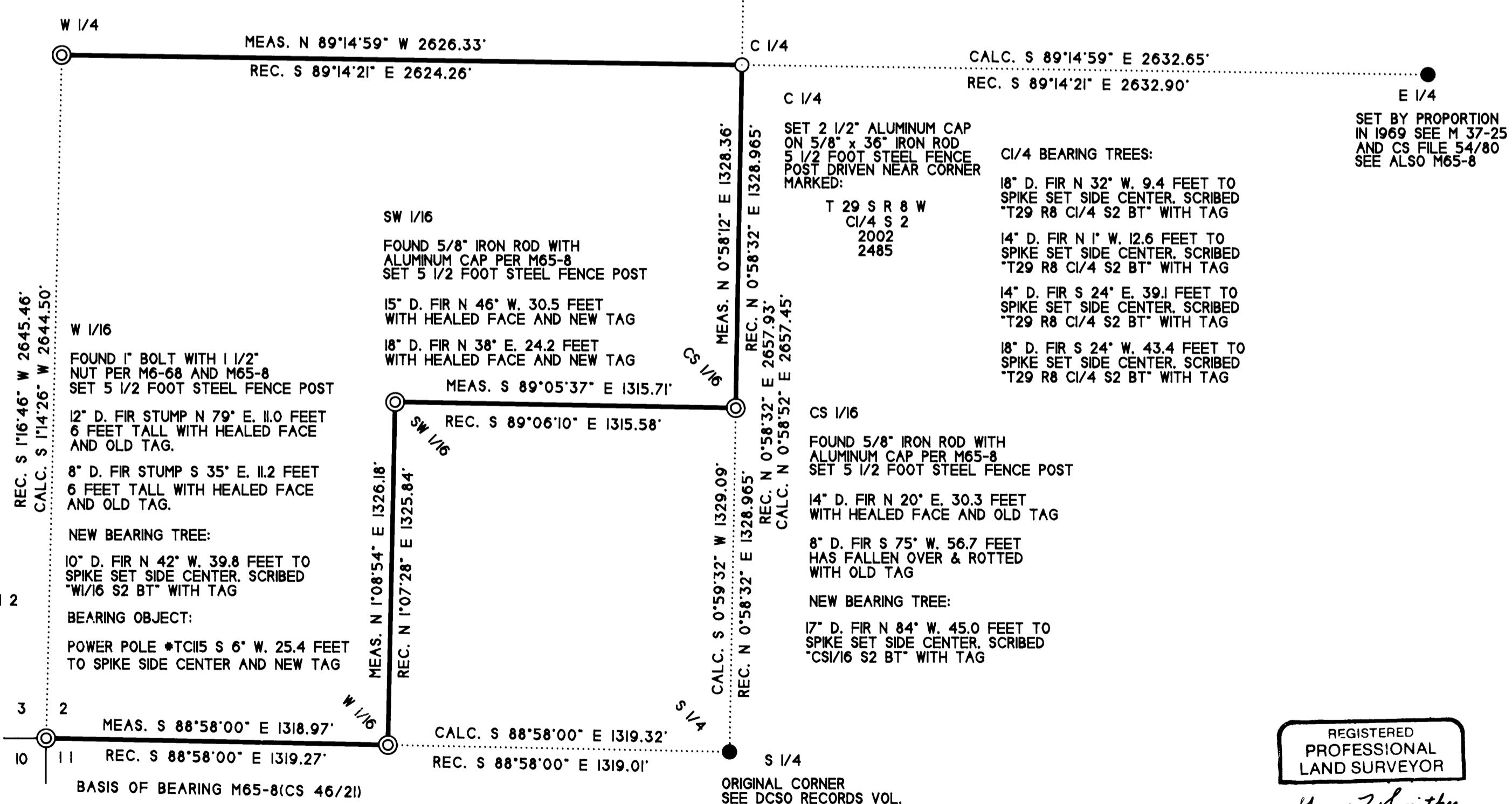
41" LAUREL S 23 1/2° E, 16.5 FEET FACE ROTTED OUT WITH OLD TAG

19" D. FIR N 64° E, 29.1 FEET WITH HEALED FACE AND NEW TAG

13" D. FIR S 86 1/2° E, 39.4 FEET WITH HEALED FACE AND NEW TAG

24" D. FIR N 86° W, 16.0 FEET WITH HEALED FACE AND OLD TAG

16" D. FIR S 46° W, 43.2 FEET WITH HEALED FACE AND NEW TAG



REGISTERED  
 PROFESSIONAL  
 LAND SURVEYOR

*Gary T. Smither*

OREGON  
 JANUARY 29, 1991  
 GARY T. SMITHER  
 2485

Expires 6/02

MAP FILE M140-3