

LONE ROCK TIMBER CO.

SURVEY BY: LONE ROCK TIMBER CO.
PO BOX 1127 ROSEBURG, OREGON 97470 LONE ROCK SURVEY: STONEROD #2 TRACT
SECTION 30, TOWNSHIP 27 SOUTH, RANGE 7 WEST, W.M. DOUGLAS COUNTY, ORE.
SCALE: 1" = 300' JUNE, 2002

NARRATIVE:

THIS SURVEY WAS CONDUCTED TO ESTABLISH CORNERS AND PROPERTY LINES FOR TIMBER CUTTING PURPOSES. WE INITIATED THIS SURVEY AT THE SOUTH 1/4 OF SECTION 30 A COUNTY BCIP SET FROM PERPETUATED ORIGINAL EVIDENCE. WE BEGAN A RANDOM TRAVERSE FROM THE SOUTH 1/4 TO HOSTETTERS CENTER WEST 1/16 CONTINUING THEN EASTERLY TO A POINT NEAR THE CENTER CORNER OF SECTION 30 TRAVERSING THEN NORTHERLY TO THE NORTH 1/4 OF SECTION 30 A COUNTY BCIP SET FROM ORIGINAL EVIDENCE. WE THEN TRAVERSED SOUTHEASTERLY TO THE EAST 1/4 OF SECTION 30 A COUNTY BCIP SET FROM ORIGINAL EVIDENCE. WE CHECKED CLOSURE OF OUR SURVEY WITH GPS BETWEEN THE SOUTH 1/4 AND A TRAVERSE POINT NEAR THE EAST 1/4. I COMPUTED AND SET THE CENTER OF SECTION 30 BASED ON THE ORIGINAL CORNER POSITIONS FOUND AND CENTER WEST 1/16 CORNER OF SECTION 30 SET FROM HOSTETTERS 2001 SURVEY OF THE WEST 1/2 OF SECTION 30. WE MARKED THE PROPERTY LINES AS SHOWN HEREON. THIS SURVEY WAS DONE WITH A NIKON DTM 450 TOTAL STATION, TRIMBLE 4400 AND 4000 SSE GPS WITH GARY ANGIOLET, MARK DVORSCAK AND IGNACIO ROMAN ASSISTING ME.

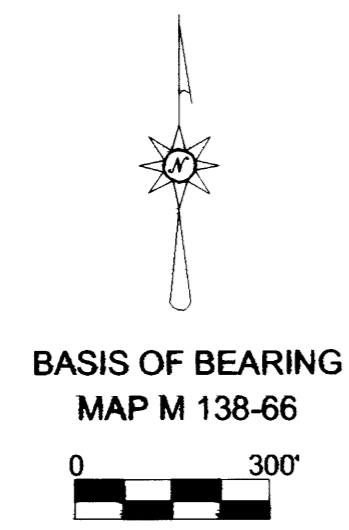
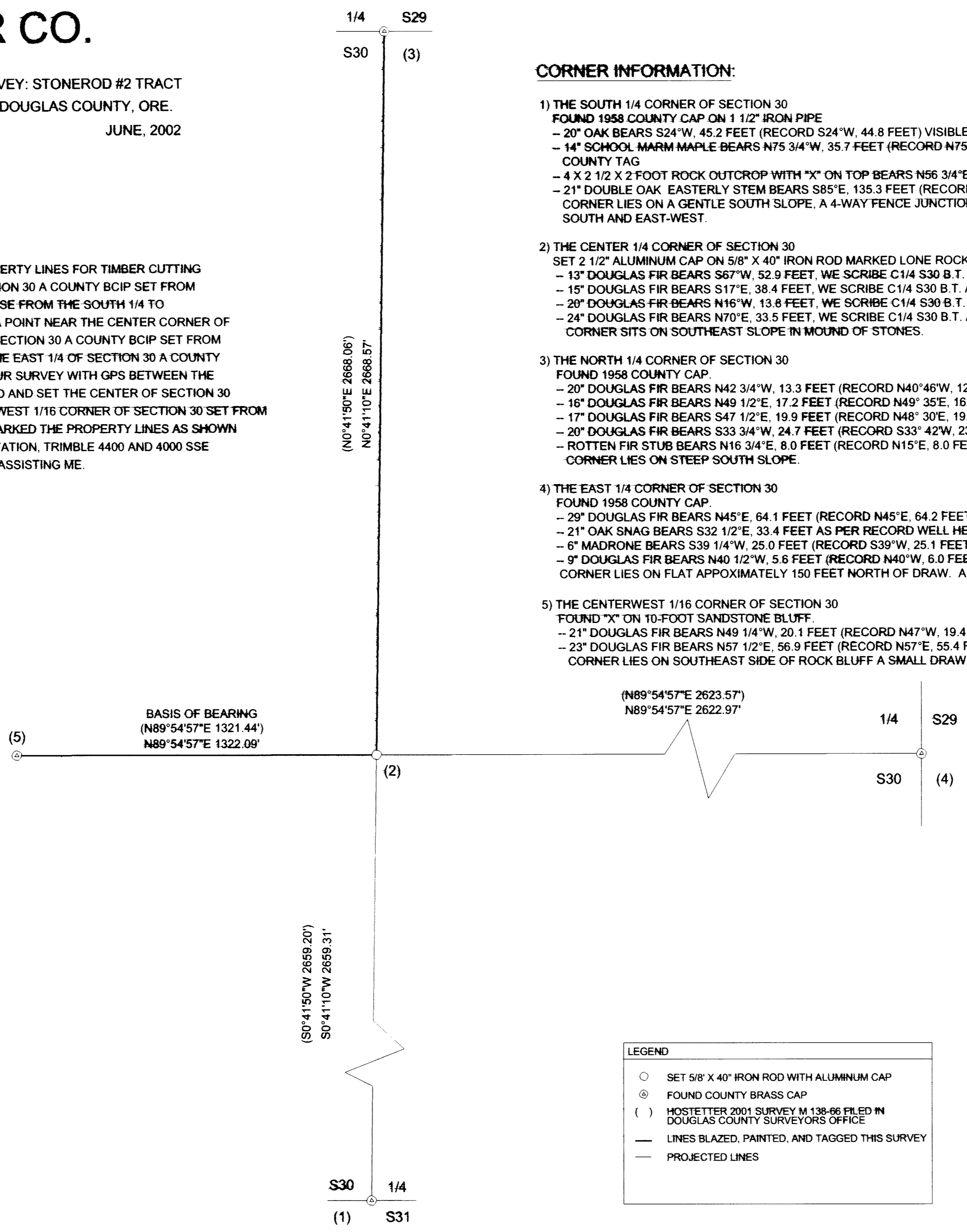
FILED

Date: 6/10/2002 By: JP
This survey consists of:
Map: M140-25
Narrative:
Corner Rpt:

DOUGLAS COUNTY
SURVEYOR

CORNER INFORMATION:

- 1) THE SOUTH 1/4 CORNER OF SECTION 30
FOUND 1958 COUNTY CAP ON 1 1/2" IRON PIPE
- 20" OAK BEARS S24°W, 45.2 FEET (RECORD S24°W, 44.8 FEET) VISIBLE SCRIBING AND COUNTY TAG
- 14" SCHOOL MARM MAPLE BEARS N75 3/4°W, 35.7 FEET (RECORD N75 1/2°W, 35.9 FEET) VISIBLE SCRIBING AND COUNTY TAG
- 4 X 2 1/2 X 2 FOOT ROCK OUTCROP WITH "X" ON TOP BEARS N56 3/4°E, 120.7 FEET (RECORD N56 1/2°E, 120.6 FEET)
- 21" DOUBLE OAK EASTERLY STEM BEARS S85°E, 135.3 FEET (RECORD S85 1/2°E, 135.0 FEET) WELL HEALED FACE, NO TAG
CORNER LIES ON A GENTLE SOUTH SLOPE, A 4-WAY FENCE JUNCTION BEARS SOUTH 2 FEET. FENCES RUN NORTH-SOUTH AND EAST-WEST.
- 2) THE CENTER 1/4 CORNER OF SECTION 30
SET 2 1/2" ALUMINUM CAP ON 5/8" X 40" IRON ROD MARKED LONE ROCK TIMBER T27S, R7W C1/4 S30 2002 PLS 2291.
- 13" DOUGLAS FIR BEARS S67°W, 52.9 FEET, WE SCRIBE C1/4 S30 B.T. AND TAG TREE
- 15" DOUGLAS FIR BEARS S17°E, 38.4 FEET, WE SCRIBE C1/4 S30 B.T. AND TAG TREE
- 20" DOUGLAS FIR BEARS N16°W, 13.8 FEET, WE SCRIBE C1/4 S30 B.T. AND TAG TREE
- 24" DOUGLAS FIR BEARS N70°E, 33.5 FEET, WE SCRIBE C1/4 S30 B.T. AND TAG TREE
CORNER SITS ON SOUTHEAST SLOPE IN MOUND OF STONES.
- 3) THE NORTH 1/4 CORNER OF SECTION 30
FOUND 1958 COUNTY CAP.
- 20" DOUGLAS FIR BEARS N42 3/4°W, 13.3 FEET (RECORD N40°46'W, 12.2 FEET) PITCHED OVER FACE AND WEYCO TAG
- 16" DOUGLAS FIR BEARS N49 1/2°E, 17.2 FEET (RECORD N49° 35'E, 16.1 FEET) PITCHED OVER FACE AND WEYCO TAG
- 17" DOUGLAS FIR BEARS S47 1/2°E, 19.9 FEET (RECORD N48° 30'E, 19.0 FEET) PITCHED OVER FACE AND WEYCO TAG
- 20" DOUGLAS FIR BEARS S33 3/4°W, 24.7 FEET (RECORD S33° 42'W, 23.4 FEET) PITCHED OVER FACE AND WEYCO TAG
- ROTTEN FIR STUB BEARS N16 3/4°E, 8.0 FEET (RECORD N15°E, 8.0 FEET) VISIBLE AXE MARKS
CORNER LIES ON STEEP SOUTH SLOPE.
- 4) THE EAST 1/4 CORNER OF SECTION 30
FOUND 1958 COUNTY CAP.
- 29" DOUGLAS FIR BEARS N45°E, 64.1 FEET (RECORD N45°E, 64.2 FEET) WELL HEALED DOUBLE FACES AND TAG
- 21" OAK SNAG BEARS S32 1/2°E, 33.4 FEET AS PER RECORD WELL HEALED DOUBLE FACE AND TAG
- 6" MADRONE BEARS S39 1/4°W, 25.0 FEET (RECORD S39°W, 25.1 FEET) DOUBLE FACE WITH VISIBLE SCRIBING AND TAG
- 9" DOUGLAS FIR BEARS N40 1/2°W, 5.6 FEET (RECORD N40°W, 6.0 FEET) DOUBLE FACE WITH VISIBLE SCRIBING AND TAG
CORNER LIES ON FLAT APPROXIMATELY 150 FEET NORTH OF DRAW. A NORTH-SOUTH FENCE LINE IS 8.0 FEET EAST OF CORNER.
- 5) THE CENTERWEST 1/16 CORNER OF SECTION 30
FOUND "X" ON 10-FOOT SANDSTONE BLUFF.
- 21" DOUGLAS FIR BEARS N49 1/4°W, 20.1 FEET (RECORD N47°W, 19.4 FEET) PITCHED OVER FACE AND WEYCO TAG
- 23" DOUGLAS FIR BEARS N57 1/2°E, 56.9 FEET (RECORD N57°E, 55.4 FEET) PITCHED OVER FACE AND WEYCO TAG
CORNER LIES ON SOUTHEAST SIDE OF ROCK BLUFF A SMALL DRAW LIES APPROXIMATELY 30 FEET WEST OF CORNER.



LEGEND	
○	SET 5/8" X 40" IRON ROD WITH ALUMINUM CAP
⊙	FOUND COUNTY BRASS CAP
()	HOSTETTER 2001 SURVEY M 138-66 FILED IN DOUGLAS COUNTY SURVEYORS OFFICE
—	LINES BLAZED, PAINTED, AND TAGGED THIS SURVEY
- - -	PROJECTED LINES

REGISTERED
PROFESSIONAL
LAND SURVEYOR

Ken W. Hoffine

OREGON
KEN W. HOFFINE
JULY 16, 1987
#2291

EXPIRES: 6-30-03

MAP FILE M140-25

MAP FILE M140-25