

LONE ROCK TIMBER CO.

PO BOX 1127 ROSEBURG OREGON 97470 DATE: JUNE 2002
 SECTION 22, TOWNSHIP 29 SOUTH, RANGE 4 WEST, W.M.
 LONE ROCK TIMBER TRACT - MCGARVEY

DOUGLAS COUNTY, OREGON
 SCALE: 1" = 300'

REGISTERED
 PROFESSIONAL
 LAND SURVEYOR

Ken W Hoffine
 OREGON
 JULY 15 '98
 KEN W. HOFFINE
 229

EXPIRES 6-30-03

LEGEND:

- ⊙ - FOUND MONUMENT
- - SET 5/8" BY 40" IRON ROD WITH PLASTIC CAP
- - LINES FLAGGED, BLAZED & TAGGED
- - - - PROJECTED LINES
- () - GLENN BAUGHMAN RECORD SURVEY FILED IN DOUGLAS COUNTY SURVEYORS OFFICE AS MAP M 27-27
- (()) - 1969 BLM FIELD NOTES PAGES 15868 AND 15869
- < > - LONE ROCK TIMBER MAP RECORD SURVEY FILED IN DOUGLAS COUNTY SURVEYORS OFFICE AS MAP M 128-12

NARRATIVE:

THIS SURVEY WAS CONDUCTED TO LOCATE, ESTABLISH AND MARK A BOUNDARY LINE TO CREATE 10 - ACRE PARCEL ON THE NORTH END OF TAX LOT 2500 DEED NO. 333882. WE INITIATED THIS SURVEY ON A BLM BCIP FOR THE CLOSING CORNER FOR SECTION 21 AND 22 ON THE SOUTH LINE OF DLC #38. WE BEGAN A CLOSED LOOP RANDOM TRAVERSE TIEING IN THE FOUND MONUMENTS AS SHOWN HEREON. WE SET IRON RODS ON THE SOUTH BOUNDARY LINE TO SEPARATE THE AGRICULTURAL FIELDS AND CREEK TO THE NORTH FROM THE TIMBERED AREA ON THE SOUTH. THIS SURVEY WAS DONE WITH A NIKON DTM 450 TOTAL STATION WITH GARY ANGIOLET, GERALD RAGON, MARK DVORCAK AND IGNACIO ROMAN ASSISTING ME.

FILED
 Date: 6/10/2002 By: JP
 This survey consists of:
 Map: M140-24
 Narrative:
 Corner Rpt:

DOUGLAS COUNTY
 SURVEYOR

CORNER INFORMATION:

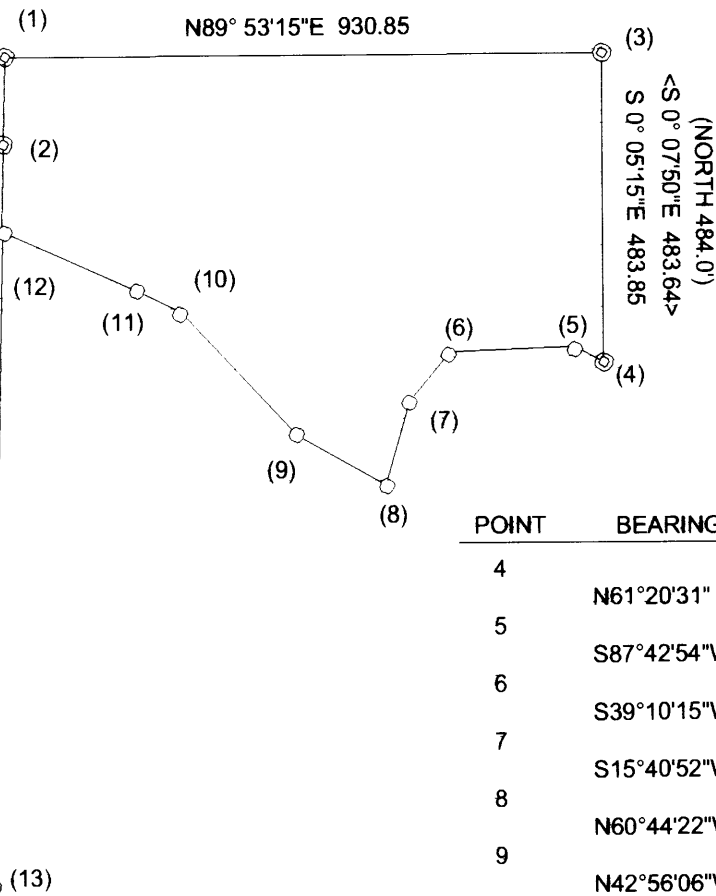
- 1) CLOSING CORNER FOR SECTION 21 AND 22 AT DLC #38 LINE
 FOUND 1969 BLM BRASS CAP AT GROUND LEVEL.
 -- 21" CEDAR BEARS S16 1/2°E, 8.58 FEET AS PER RECORD, WELL HEALED FACE AND BLM TAG
 -- 39 1/2" DOUGLAS FIR BEARS S70 3/4°E, 82.17 FEET AS PER RECORD, WELL HEALED FACE
 CORNER LIES ON FLAT GROUND NORTHEAST OF MOBILE HOME.
- 2) WITNESS CORNER FOR THE 1/4 CORNER BETWEEN SECTION 21 AND 22
 FOUND 1969 BLM BRASS CAP 1 1/2 FEET TALL INSIDE 4" METAL PIPE CASING.
 -- 34" CEDAR BEARS S49 3/4°E, 30.4 FEET (RECORD S49 3/4°E, 29.7 FEET) WELL HEALED FACE AND BLM TAG
 -- 18" CEDAR BEARS N56 1/2°W, 47.5 FEET AS PER RECORD, WELL HEALED FACE AND BLM TAG
 CORNER LIES ON NORTH BANK OF NORTH MYRTLE CREEK WEST OF SHOP BUILDING AND SOUTHEAST OF MOBILE HOME.
- 3) PROPERTY CORNER ON SOUTH LINE OF DLC #38
 FOUND 3 1/2" BRASS CAP AT GROUND LEVEL SET IN CONCRETE.
 -- POWER POLE PPL 29-04 BEARS S83°W, 31.0 FEET
 CORNER LIES AT THE INTERSECTION OF AN EAST-WEST FENCE AND A NORTH-SOUTH FENCE.
- 4) PROPERTY CORNER
 FOUND 5/8" IRON PIPE SET BY BAUGHMAN MAP 27-27.
 -- 15" DOUGLAS FIR BEARS S62°E, 24.1 FEET
 CORNER LIES AT BASE OF HILL AT THE CORNER OF A NORTH-SOUTH FENCE.
- 5) PROPERTY CORNER
 SET 5/8" REBAR WITH YELLOW PLASTIC CAP MARKED LONE ROCK TIMBER LS 2291.
- 6) PROPERTY CORNER
 SET 5/8" REBAR WITH YELLOW PLASTIC CAP MARKED LONE ROCK TIMBER LS 2291.
 -- 5" DOUGLAS FIR BEARS S13°E, 9.3 FEET, WE SCRIBED "B.T." AND TAGGED
- 7) PROPERTY CORNER
 SET 5/8" REBAR WITH YELLOW PLASTIC CAP MARKED LONE ROCK TIMBER LS 2291.
 -- 10" MAPLE BEARS S67°W, 24.2 FEET, WE SCRIBED "B.T." AND TAGGED
- 8) PROPERTY CORNER
 SET 5/8" REBAR WITH YELLOW PLASTIC CAP MARKED LONE ROCK TIMBER LS 2291.
 -- 13" CEDAR BEARS N8°W, 17.3 FEET, WE SCRIBED "B.T." AND TAGGED
- 9) PROPERTY CORNER
 SET 5/8" REBAR WITH YELLOW PLASTIC CAP MARKED LONE ROCK TIMBER LS 2291.
 -- 6" DOUGLAS FIR BEARS S71 1/4°E, 29.9 FEET, WE SCRIBED "B.T." AND TAGGED
- 10) PROPERTY CORNER
 SET 5/8" REBAR WITH YELLOW PLASTIC CAP MARKED LONE ROCK TIMBER LS 2291.
 -- 6" GRAND FIR BEARS N81 1/4°W, 21.6 FEET, WE SCRIBED "B.T." AND TAGGED
- 11) PROPERTY CORNER
 SET 5/8" REBAR WITH YELLOW PLASTIC CAP MARKED LONE ROCK TIMBER LS 2291.
 -- 7" DOUGLAS FIR BEARS S78 1/2°W, 13.1 FEET, WE SCRIBED "B.T." AND TAGGED
- 12) PROPERTY CORNER
 SET 5/8" REBAR WITH YELLOW PLASTIC CAP MARKED LONE ROCK TIMBER LS 2291.
 -- 12" INCENSE CEDAR BEARS S73°E, 32.8 FEET, WE SCRIBED "B.T." AND TAGGED
- 13) PROPERTY CORNER
 FOUND 5/8" REBAR WITH YELLOW PLASTIC CAP MARKED LONE ROCK TIMBER LS 2291.
 -- 7" DOUGLAS FIR BEARS S44°E, 12.7 FEET, HEALING FACE AND TAG
 -- 5/8" IRON ROD BEARS S89° 59' 48"W 25.04 FEET (SET BY BAUGHMAN MAP M 27-10)
 CORNER LIES ON STEEP NORTH FACING SLOPE APPROX. 35 FEET NORTH OF SPUR RIDGE

BASIS OF BEARING

((N 1°10'00"E))
 ((138.60))
 <N 1°10'00"E>
 <137.98>
 N 1°10'00"E
 138.01

N 1°12'14"E
 135.11

<S 1°12'28"W 1161.38>
 S 1°12'57"W 1161.46
 S 1°12'57"W 1026.36



BASIS OF BEARING
 FROM BLM FIELD NOTES
 PAGE 15869

POINT	BEARING	DISTANCE
4	N61°20'31" W	51.02
5	S87°42'54"W	196.21
6	S39°10'15"W	101.63
7	S15°40'52"W	131.97
8	N60°44'22"W	159.34
9	N42°56'06"W	264.66
10	N63°53'04"W	76.22
11	N66°00'00"W	228.58
12		

MAP FILE M140-24

MAP FILE M140-24