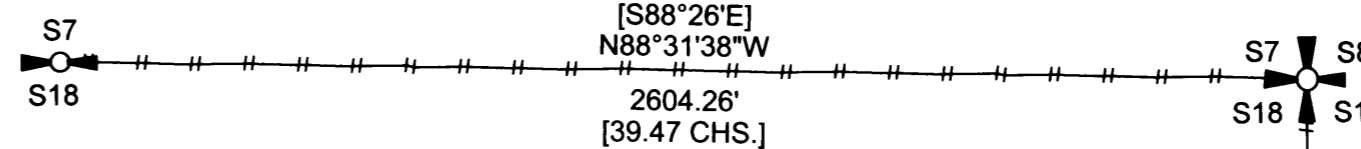


**RECORD OF SURVEY**  
**FOR: ROSEBURG RESOURCES CO.**  
**SECTION 18, T21S, R8W, W.M.**  
**DOUGLAS COUNTY, OREGON**  
**25, APRIL 2002**

1/4 CORNER SECTIONS 7, 18  
 FOUND 2-1/2" GLO BRASS CAP DATED 1945  
 WITH THE FOLLOWING ACCESSORIES  
 70" D. FIR BEARS N74°E 42 LKS. - ROTTEN STUMP  
 70" D. FIR BEARS S3-1/2° E 36 LKS. - ROTTEN STUMP  
 16" D. FIR BEARS S13°W 11.6' OPEN FACE - SCRIBING VISIBLE  
 7" D. FIR STUMP BEARS S60°W 7.9' - OPEN FACE SCRIBING VISIBLE  
 10" D. FIR BEARS N61°W 10.7' - OPEN FACE SCRIBING VISIBLE  
 12" D. FIR BEARS N36°E 29.8' - OPEN FACE SCRIBING VISIBLE



SECTION CORNER SECTIONS 7, 8, 17, 18  
 FOUND 3" BLM BRASS CAP DATED 1960  
 WITH THE FOLLOWING ACCESSORIES  
 23" D. FIR STUMP BEARS N31°E 35 LKS. - VISIBLE SCRIBING ON BURNED AND ROTTED FACE  
 40" D. FIR STUMP BEARS S54 -1/2°E 229 LKS. WITH VISIBLE SCRIBE ON OPEN FACE  
 17" D. FIR BEARS N68°E 323 LKS. - HEALED FACE  
 12" D. FIR BEARS S62°W 4.1' - OPEN FACE SCRIBING VISIBLE  
 11" D. FIR BEARS N32°W 6.7' - OPEN FACE SCRIBING VISIBLE  
 12" D. FIR BEARS S43°E 32.0' - OPEN FACE SCRIBING VISIBLE

FILED  
 Date: 5/20/2002 By: JC  
 This survey consists of:  
 Map: M140-10  
 Narrative:  
 Corner Rpt:

DOUGLAS COUNTY  
 SURVEYOR

**NARRATIVE**

THE PURPOSE OF THIS SURVEY WAS TO MARK A PORTION OF THE BOUNDARY'S OF SECTION 18, T21S R8W, W.M. AS SHOWN ON THIS PLAT

ALL SECTION CORNERS AND 1/4 CORNERS WERE HELD IN THEIR AS TIED POSITION, WITH THE EXCEPTION OF THE 1/4 CORNER COMMON TO SECTIONS 18 AND 19. THIS CORNER WAS FOUND TO BE 20.06' N36°17'29"E FROM A SINGLE PROPORTIONED POSITION BASED ON THE 1884 GLO RECORD.

THE BLM WAS CONTACTED AND REQUESTED TO REVIEW THE AS TIED POSITION OF THE 1945 1/4 CORNER. A LETTER INDICATING A CORRECTIVE DEPENDANT RESURVEY WOULD BE INITIATED WAS ISSUED ON FEBRUARY 19, 2002, BY THE BLM. OUR CLIENT REQUESTED THIS CORNER BE SET IN CONJUNCTION WITH THIS SURVEY.

IN 1966, THE BLM PERFORMED A DEPENDENT RESURVEY OF THE WEST LINE OF SECTION 18, WHICH INCLUDED SETTING THE E1/4 CORNER OF SECTION 13, T21S, R9W, W.M.. THE E1/4 CORNER SECTION 13, WAS FOUND TO BE FORCED OUT OF POSITION DUE TO A TREE ROOT, THEREFORE, IT WAS NOT HELD AS CONTROLLING THE WEST LINE OF SECTION 18.

LINE SHOWN AS POSTED AS A RESULT OF THIS SURVEY WAS MARKED WITH RED PAINTED BLAZES, RED FLAGGING AND 5 - 1/2 GALVANIZED STEEL POSTS. THE POSTS WERE SET AT RANDOM INTERVALS WITH A MAXIMUM SPACING OF APPROXIMATELY 200'.

THE BASIS OF BEARING FOR THIS SURVEY WAS THE BEARING OF THE SOUTH LINE OF SECTION 18 AS ESTABLISHED IN THE 1947 GLO DEPENDENT RESURVEY.

THIS SURVEY WAS PERFORMED USING A PENTAX TOTAL STATION.

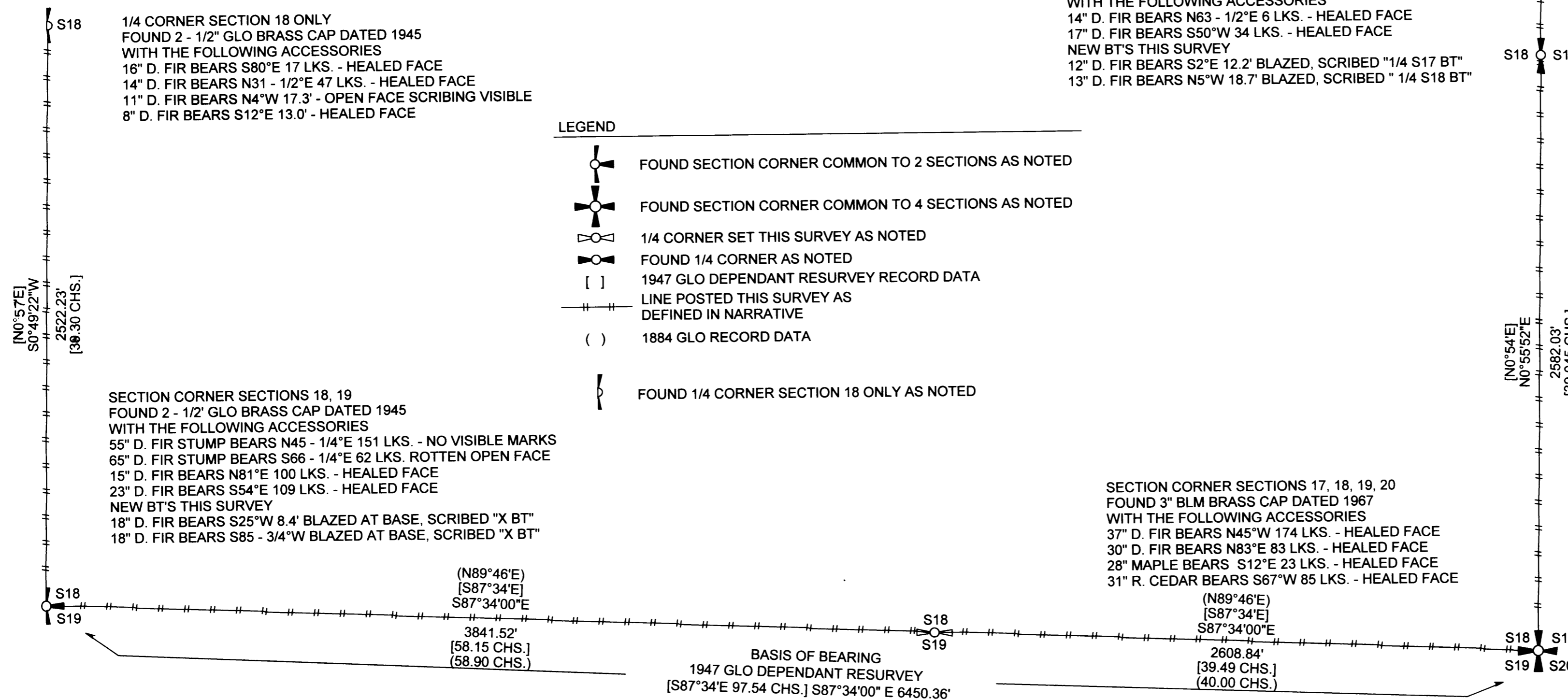
1/4 CORNER SECTIONS 17, 18  
 FOUND 2 - 1/2" GLO BRASS CAP DATED 1945  
 WITH THE FOLLOWING ACCESSORIES  
 14" D. FIR BEARS N63 - 1/2°E 6 LKS. - HEALED FACE  
 17" D. FIR BEARS S50°W 34 LKS. - HEALED FACE  
 NEW BT'S THIS SURVEY  
 12" D. FIR BEARS S2°E 12.2' BLAZED, SCRIBED "1/4 S17 BT"  
 13" D. FIR BEARS N5°W 18.7' BLAZED, SCRIBED " 1/4 S18 BT"

1/4 CORNER SECTION 18 ONLY  
 FOUND 2 - 1/2" GLO BRASS CAP DATED 1945  
 WITH THE FOLLOWING ACCESSORIES  
 16" D. FIR BEARS S80°E 17 LKS. - HEALED FACE  
 14" D. FIR BEARS N31 - 1/2°E 47 LKS. - HEALED FACE  
 11" D. FIR BEARS N4°W 17.3' - OPEN FACE SCRIBING VISIBLE  
 8" D. FIR BEARS S12°E 13.0' - HEALED FACE

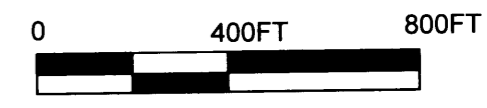
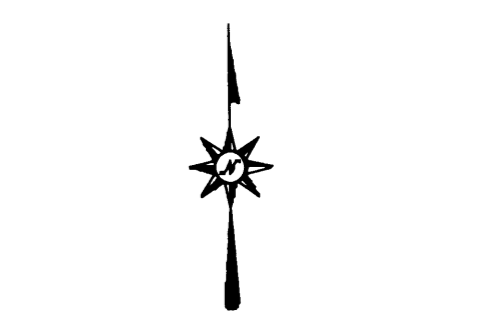
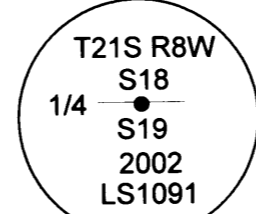
SECTION CORNER SECTIONS 18, 19  
 FOUND 2 - 1/2" GLO BRASS CAP DATED 1945  
 WITH THE FOLLOWING ACCESSORIES  
 55" D. FIR STUMP BEARS N45 - 1/4°E 151 LKS. - NO VISIBLE MARKS  
 65" D. FIR STUMP BEARS S66 - 1/4°E 62 LKS. ROTTEN OPEN FACE  
 15" D. FIR BEARS N81°E 100 LKS. - HEALED FACE  
 23" D. FIR BEARS S54°E 109 LKS. - HEALED FACE  
 NEW BT'S THIS SURVEY  
 18" D. FIR BEARS S25°W 8.4' BLAZED AT BASE, SCRIBED "X BT"  
 18" D. FIR BEARS S85 - 3/4°W BLAZED AT BASE, SCRIBED "X BT"

**LEGEND**

- FOUND SECTION CORNER COMMON TO 2 SECTIONS AS NOTED
- FOUND SECTION CORNER COMMON TO 4 SECTIONS AS NOTED
- 1/4 CORNER SET THIS SURVEY AS NOTED
- FOUND 1/4 CORNER AS NOTED
- 1947 GLO DEPENDANT RESURVEY RECORD DATA
- LINE POSTED THIS SURVEY AS DEFINED IN NARRATIVE
- 1884 GLO RECORD DATA
- FOUND 1/4 CORNER SECTION 18 ONLY AS NOTED



1/4 CORNER SECTIONS 18, 19  
 SET 5/8" X 24" REBAR IN SANDSTONE WITH 2 - 1/2" ALUMINUM CAP  
 MARKED AS SHOWN, WITH THE FOLLOWING ACCESSORIES  
 22" D. FIR BEARS N79°W 40.8' BLAZED, SCRIBED "1/4 S18 BT"  
 20" D. FIR BEARS S76 -1/2°W 15.5' BLAZED, SCRIBED "1/4 S19 BT"  
 20" D. FIR BEARS S56 - 1/4°E 13.3' BLAZED, SCRIBED "1/4 S19 BT"  
 2 - 1/2" GLO BRASS CAP DATED 1945 BEARS N36°17'29"E 20.06'



REGISTERED  
 PROFESSIONAL  
 LAND SURVEYOR  
  
 OREGON  
 ROBERT B. WARD JR.  
 JULY 30, 1976  
 LS 1091  
 EXPIRES: 6/30/02

Ward NorthWest, Inc.  
 P.O. BOX 105 FLORENCE, OR 97439  
 (541) 997-9201 FAX: 541-997-3546

FILE X:\SURVEY\02102-01\02-01.TRV

MAP FILE M140-10

MAP FILE M140-10