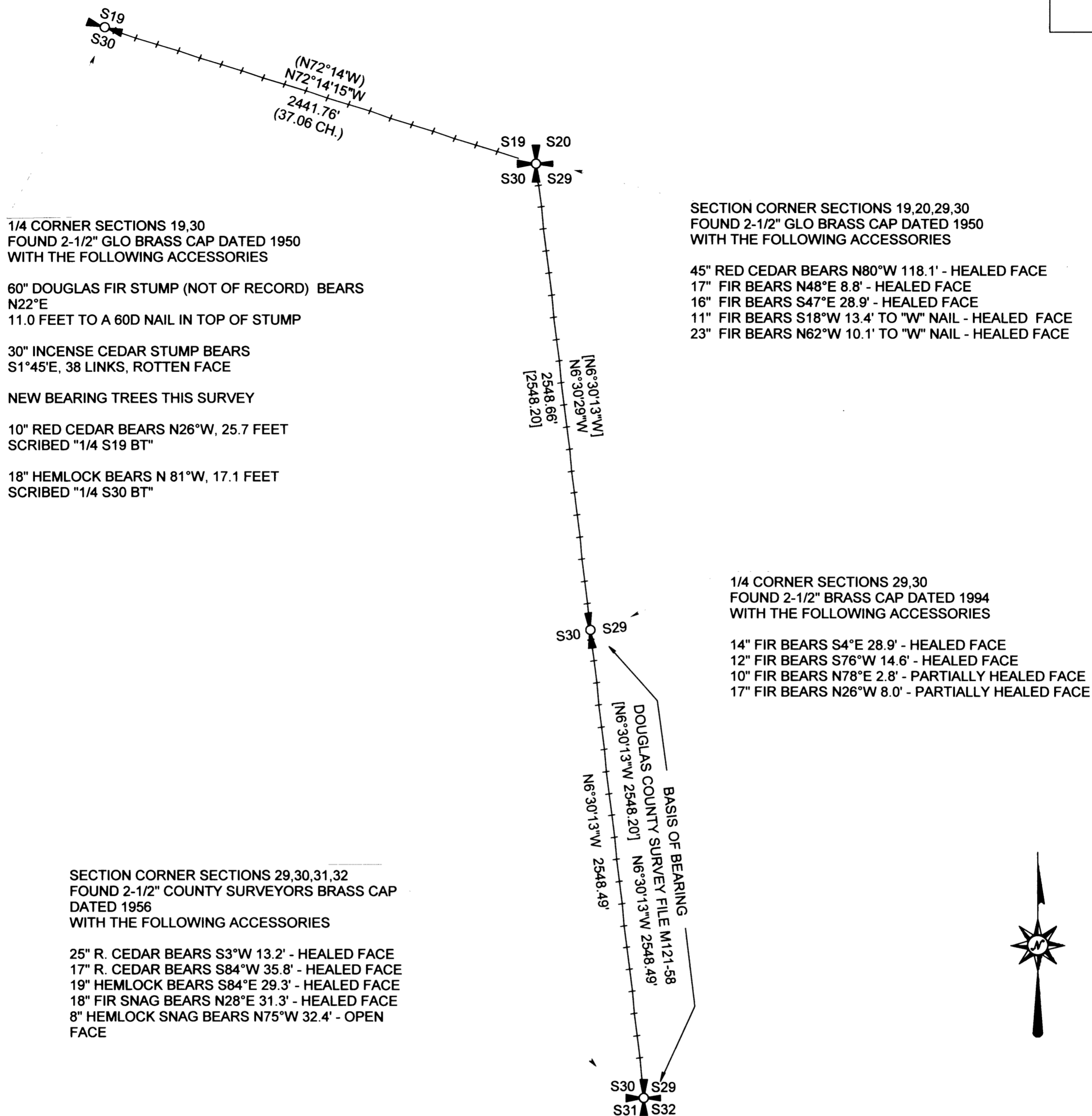


PROPERTY SURVEY
 FOR: SENECA JONES TIMBER COMPANY
 NE1/4 & SE1/4, SECTION 30, T24S, R3W, W.M.
 DOUGLAS COUNTY, OREGON 19, DECEMBER 2001

FILED
 Date: 1/9/2002 By: JP
 This survey consists of:
 Map: M139-34
 Narrative:
 Corner Rpt:
 DOUGLAS COUNTY
 SURVEYOR



1/4 CORNER SECTIONS 19,30
 FOUND 2-1/2" GLO BRASS CAP DATED 1950
 WITH THE FOLLOWING ACCESSORIES

60" DOUGLAS FIR STUMP (NOT OF RECORD) BEARS
 N22°E
 11.0 FEET TO A 60D NAIL IN TOP OF STUMP

30" INCENSE CEDAR STUMP BEARS
 S1°45'E, 38 LINKS, ROTTEN FACE

NEW BEARING TREES THIS SURVEY

10" RED CEDAR BEARS N26°W, 25.7 FEET
 SCRIBED "1/4 S19 BT"

18" HEMLOCK BEARS N 81°W, 17.1 FEET
 SCRIBED "1/4 S30 BT"

SECTION CORNER SECTIONS 19,20,29,30
 FOUND 2-1/2" GLO BRASS CAP DATED 1950
 WITH THE FOLLOWING ACCESSORIES

45" RED CEDAR BEARS N80°W 118.1' - HEALED FACE
 17" FIR BEARS N48°E 8.8' - HEALED FACE
 16" FIR BEARS S47°E 28.9' - HEALED FACE
 11" FIR BEARS S18°W 13.4' TO "W" NAIL - HEALED FACE
 23" FIR BEARS N62°W 10.1' TO "W" NAIL - HEALED FACE

1/4 CORNER SECTIONS 29,30
 FOUND 2-1/2" BRASS CAP DATED 1994
 WITH THE FOLLOWING ACCESSORIES

14" FIR BEARS S4°E 28.9' - HEALED FACE
 12" FIR BEARS S76°W 14.6' - HEALED FACE
 10" FIR BEARS N78°E 2.8' - PARTIALLY HEALED FACE
 17" FIR BEARS N26°W 8.0' - PARTIALLY HEALED FACE

SECTION CORNER SECTIONS 29,30,31,32
 FOUND 2-1/2" COUNTY SURVEYORS BRASS CAP
 DATED 1956
 WITH THE FOLLOWING ACCESSORIES

25" R. CEDAR BEARS S3°W 13.2' - HEALED FACE
 17" R. CEDAR BEARS S84°W 35.8' - HEALED FACE
 19" HEMLOCK BEARS S84°E 29.3' - HEALED FACE
 18" FIR SNAG BEARS N28°E 31.3' - HEALED FACE
 8" HEMLOCK SNAG BEARS N75°W 32.4' - OPEN
 FACE

NARRATIVE

THE PURPOSE OF THIS SURVEY WAS TO MARK THE SECTION LINES SHOWN ON THIS MAP WITH RED PAINTED BLAZES, RED FLAGGING AND 5-1/2" GALVANIZED STEEL POSTS PLACED AT APPROXIMATELY 200' INTERVALS OR LESS.

ALL CORNERS SHOWN ON THIS MAP WERE TIED IN A CONTROL TRAVERSE AND HELD AS CONTROLLING CORNERS FOR MARKING TRUE LINE IN THE ABOVE REFERENCED MANNER.

THE BASIS OF BEARING FOR THIS SURVEY WAS THE SECTION LINE BETWEEN SECTIONS 29 AND 30 FROM THE COMMON SOUTH SECTION CORNER TO THE COMMON 1/4 CORNER AS SHOWN IN DOUGLAS COUNTY SURVEY FILE M121-58 A, B.

THIS SURVEY WAS PERFORMED USING A PENTAX TOTAL STATION.

ALL CORNERS HAVE A GALVANIZED STEEL POST ADJACENT TO CORNER MONUMENT AND ALL CORNER ACCESSORIES HAVE A RED PAINTED BAND AND FACE PLUS A BEARING TREE TAG.



REGISTERED
 PROFESSIONAL
 LAND SURVEYOR
 Robert B. Ward Jr.
 OREGON
 ROBERT B. WARD JR.
 JULY 30, 1976
 LS 1091
 EXPIRES: 6/30/02

LEGEND

- FOUND 1/4 CORNER AS NOTED
- FOUND SECTION CORNER AS NOTED
- LINE MARKED AS NOTED IN NARRATIVE
- RECORD DATA 1950 GLO DEPENDANT RESURVEY
- RECORD DATA DOUGLAS COUNTY SURVEY FILE M121-58 A, B

PLOTTER: HP DESIGNJET 500
 INK: BLACK C4810A
 MEDIA: CLEARPRINT DRAFTING VELLUM
 TRANSLUCENT-100% NEW COTTON FIBER
 SOLVENT FREE

Ward NorthWest, Inc.
 P.O. BOX 105 FLORENCE, OR 97439
 (541) 997-9201 FAX: 541-997-3546
 FILE:X:\SURVEYS\01\01-70\01-70.TRV