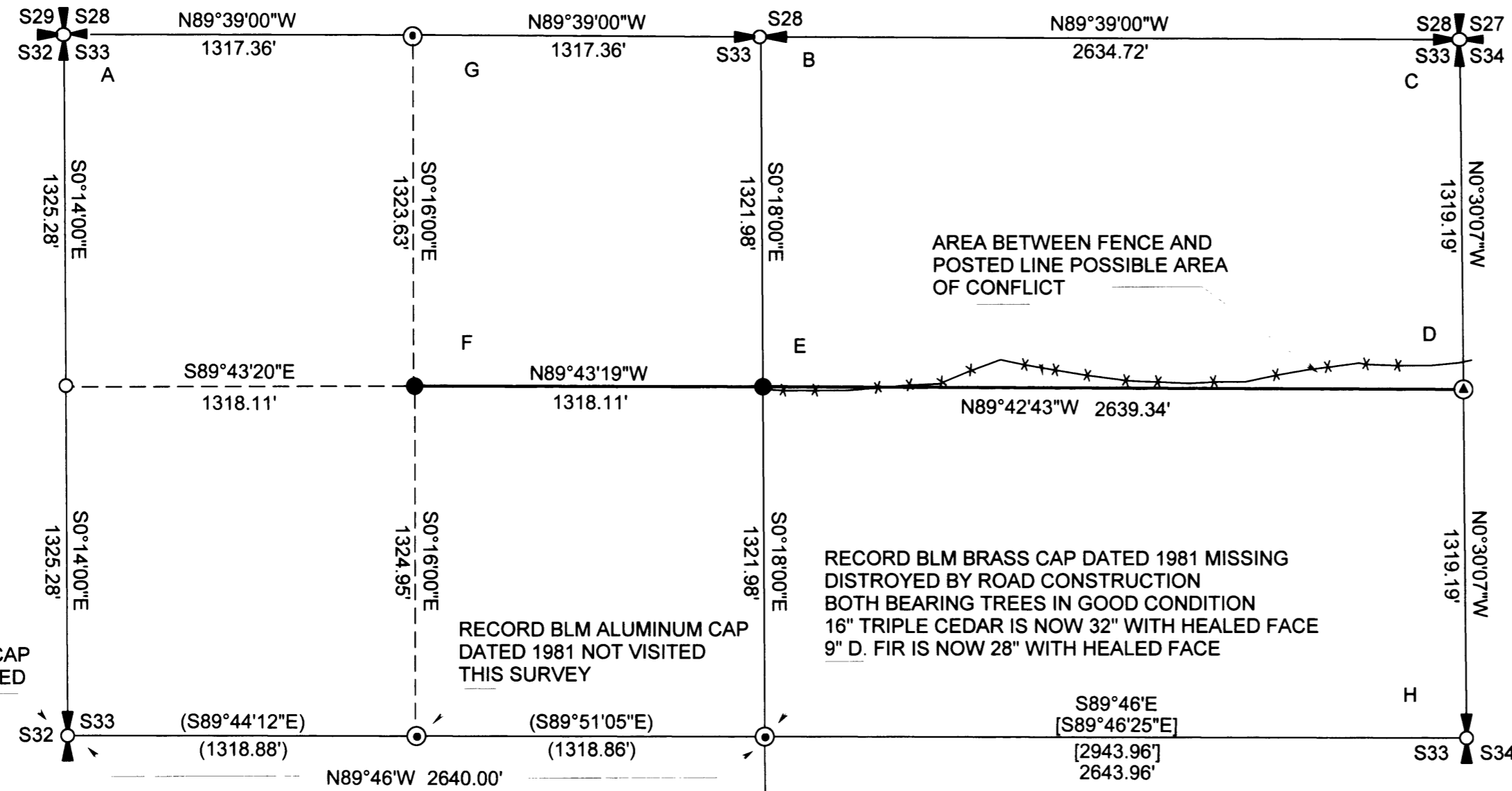


PROPERTY SURVEY  
 FOR: SENECA JONES TIMBER COMPANY  
 NW1/4 & NE1/4, SECTION 33, T21S, R5W, W.M.  
 DOUGLAS COUNTY, OREGON  
 13, NOVEMBER 2001

BASIS OF BEARING  
 1984 BLM DEPENDANT RESURVEY OF SECTION 33  
 N89°39'W 79.84CH. [N89°39'W 5269.38']



RECORD BLM BRASS CAP  
 DATED 1981 NOT VISITED  
 THIS SURVEY

RECORD BLM ALUMINUM CAP  
 DATED 1981 NOT VISITED  
 THIS SURVEY

RECORD BLM BRASS CAP DATED 1981 MISSING  
 DESTROYED BY ROAD CONSTRUCTION  
 BOTH BEARING TREES IN GOOD CONDITION  
 16" TRIPLE CEDAR IS NOW 32" WITH HEALED FACE  
 9" D. FIR IS NOW 28" WITH HEALED FACE

AREA BETWEEN FENCE AND  
 POSTED LINE POSSIBLE AREA  
 OF CONFLICT

**NARRATIVE**

THE PURPOSE OF THIS SURVEY WAS TO SET THE NW 1/16 AND THE CN 1/16 CORNERS OF SECTION 33 ALSO TO POST LINE FROM THE N1/16 BETWEEN SECTIONS 33 AND 34 TO THE CN 1/16 CORNER AND FROM THE CN 1/16 CORNER TO THE NW 1/16 CORNER, ALL WITHIN SECTION 33.

THE BASIS OF BEARING FOR THIS SURVEY WAS THE NORTH LINE OF SECTION 33 AS SHOWN ON THE 1984 BLM DEPENDANT RESURVEY PLAT OF SECTION 33.

SECTION 33 WAS SUBDIVIDED BY A BLM 1984 DEPENDANT RESURVEY. THE FOLLOWING CORNERS OF SECTION 33 WERE TIED IN A CLOSED LOOP TRAVERSE TO CHECK THE ACCURACY OF THE BLM RECORD DATA. NE, NW, W1/16 ON THE NORTH LINE AND THE E 1/4 CORNER. THESE CORNER POSITIONS CHECKED CLOSELY WITH BLM'S 1984 RECORD. THE POSITION OF THE CN 1/16 AND NW 1/16 WERE THEN CALCULATED FOLLOWING THE 1973 BLM MANUAL OF SURVEYING INSTRUCTION AND USING 1984 BLM RECORD DATA. THE SLIGHT VARIATION IN DATA SHOWN FOR THE LINE FROM THE W 1/4 TO THE C 1/4 IS BLM PLAT RECORD VERSES INVERSE PLAT CLOSURE.

THE ABOVE LINE REFERENCED AS POSTED WAS MARKED WITH 5-1/2" GALVANIZED STEEL POSTS SET AT APPROXIMATELY 200' INTERVALS OR LESS, RED PAINTED BLAZES AND RED FLAGGING. ALL CORNERS ESTABLISHED AS A RESULT OF THIS SURVEY WERE MONUMENTED WITH A 5/8" X 36" REBAR WITH 2-1/2" ALUMINUM CAP. BEARING TREES ESTABLISHED DURING THIS SURVEY HAVE A RED PAINTED BAND AND FACE PLUS YELLOW BEARING TREE TAG.

THIS SURVEY WAS PERFORMED USING A PENTAX TOTAL STATION.

DATA SHOWN ON THIS PLAT UNLESS OTHERWISE NOTED IS RECORD FROM THE 1984 BLM DEPENDANT RESURVEY OF SECTION 33.

**LEGEND**

- CALCULATED POSITION NO MONUMENT SET
- MONUMENT SET THIS SURVEY AS NOTED
- ⊙ BLM MONUMENT OF RECORD AS NOTED
- ⊕ 1/4 CORNER MONUMENT OF RECORD AS NOTED
- ⊕ SECTION CORNER MONUMENT OF RECORD AS NOTED
- [ ] RECORD DATA FROM THIS SURVEY
- - - APPROXIMATE WIRE FENCE LOCATION
- POSTED LINE THIS SURVEY
- ( ) INVERSED DATA
- ⊙ FOUND MONUMENT AS NOTED

RECORD BLM BRASS CAP  
 DATED 1981 NOT VISITED  
 THIS SURVEY

PLOTTER: HP DESIGNJET 500  
 INK: BLACK C4810A  
 MEDIA: CLEARPRINT DRAFTING VELLUM  
 TRANSLUCENT-100% NEW COTTON FIBER  
 SOLVENT FREE

**A**  
 SECTION CORNER 28,29,32,33  
 FOUND 3-1/4" BLM ALUMINUM CAP  
 DATED 1981 WITH THE FOLLOWING  
 ACCESSORIES  
 WC 2-1/2" COUNTY SURVEYORS OFFICE BRASS CAP  
 DATED 1962 BEARS NORTH 20.90' - RECORD 20.0'  
 26" GRAND FIR BEARS S6-1/4"E 36.3' HEALED FACE  
 65" D. FIR BEARS N63"E 35.0' FAINT BARK SCRIBING  
 38" I. CEDAR BEARS S50-1/2"E 67.3' HEALED FACE

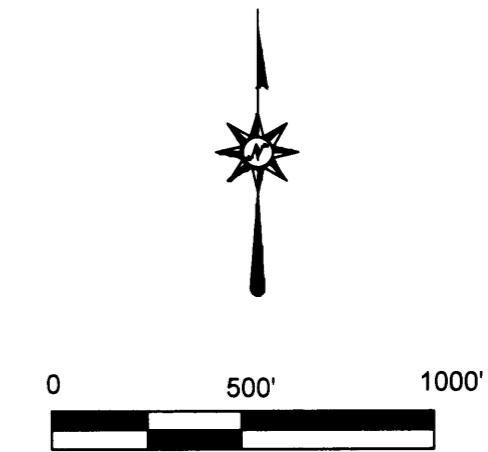
**B**  
 1/4 CORNER SECTIONS 28,33  
 FOUND 3-1/4" BLM BRASS CAP DATED 1981  
 WITH THE FOLLOWING ACCESSORIES  
 3" ALUMINUM CAP ON 2" ALUMINUM PIPE DATED 1972 SET  
 IN M46-31 BEARS S75°51'E 10.85'  
 NEW BT'S THIS SURVEY  
 8" G. FIR BEARS S66-1/2"E 81.3' BLAZED, SCRIBED "1/4 S33 BT"  
 12" MAPLE IN 4 STEM CLUMP BEARS S36-1/2"E 68.7'  
 BLAZED, SCRIBED "1/4 S33 BT"

**C**  
 SECTION CORNER 27,28,33,34  
 FOUND COUNTY SURVEYORS OFFICE  
 2-1/2" BRASS CAP DATED 1962  
 WITH THE FOLLOWING ACCESSORIES  
 24" D. FIR BEARS N20-1/4"E 37.0'  
 HEALED FACE  
 39" D. FIR BEARS S34-1/4"W 23.1'  
 HEALED FACE  
 34" D. FIR BEARS N17-1/4"W 25.1'  
 HEALED FACE  
 10" D. FIR BEARS S16-14"E 40.3'  
 HEALED FACE

**D**  
 N1/16 SECTIONS 33,34  
 FOUND 5/8" REBAR WITH 2-1/2"  
 ALUMINUM CAP, LS 1091, DATED 2001  
 WITH THE FOLLOWING ACCESSORIES  
 10" D. FIR BEARS N17°W 62.7'  
 BLAZED AND SCRIBED "N1/16 S33 BT"  
 16" TWIN B. OAK BEARS N44°E 74.0'  
 BLAZED AND SCRIBED "N1/16 S34 BT"

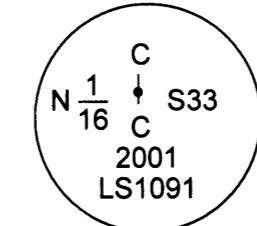
REGISTERED  
 PROFESSIONAL  
 LAND SURVEYOR  
  
 OREGON  
 ROBERT B. WARD JR.  
 JULY 30, 1976  
 LS 1091

EXPIRES: 6/30/02

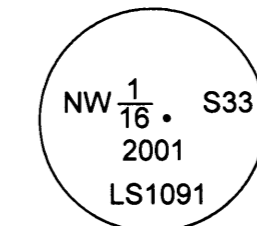


FILED  
 Date: 12/18/2001 By: JP  
 This survey consists of:  
 Map: M139-23  
 Narrative:  
 Corner Rpt:  
 DOUGLAS COUNTY  
 SURVEYOR

**E**  
 CN1/16 SECTION 33  
 SET 5/8" X 36" REBAR WITH 2-1/2" ALUMINUM CAP  
 MARKED AS SHOWN WITH THE FOLLOWING ACCESSORIES  
 14" D. FIR BEARS S34°E 14.0' BLAZED, SCRIBED "CN1/16 S33 BT"  
 24" D. FIR BEARS S57°W 27.0' BLAZED, SCRIBED "CN1/16 S33 BT"



**F**  
 NW1/16 SECTION 33  
 SET 5/8" X 36" REBAR WITH 2-1/2" ALUMINUM CAP  
 MARKED AS SHOWN WITH THE FOLLOWING ACCESSORIES  
 13" D. FIR BEARS S81°W 12.3' BLAZED, SCRIBED "NW1/16 S33 BT"  
 12" D. FIR BEARS N2°W 25.2' BLAZED, SCRIBED "NW1/16 S33 BT"



**G**  
 W1/16 SECTIONS 28,33  
 FOUND 3-1/4" BLM ALUMINUM CAP  
 DATED 1981 WITH THE FOLLOWING ACCESSORIES  
 52" X 4" D. FIR STUMP BEARS N15°E 5.3' HEALED FACE  
 9" X 3" D. FIR STUMP BEARS S57°E 24.4' OPEN FACE

**H**  
 1/4 CORNER SECTIONS 33/34  
 FOUND 3-1/4" BLM BRASS CAP  
 SET IN STONE 6" BELOW GROUND  
 DATED 1981 WITH THE FOLLOWING  
 ACCESSORIES  
 28" W. OAK BEARS S60°E 64.0'  
 HEALED FACE  
 18" D. FIR STUMP BEARS N24°W 39.0'  
 HEALED FACE  
 9" D. FIR BEARS S51°W 47.0'  
 PARTIALLY HEALED FACE  
 23" W. OAK BEARS S88°E 136.5'  
 HEALED FACE  
 12" D. FIR BEARS N48°E 237.3'  
 HEALED FACE

Ward NorthWest, Inc.  
 P.O. BOX 105 FLORENCE, OR 97439  
 (541) 997-9201 FAX: 541-997-3546

FILE X:\SURVEYS\01\01\01-64\S33.TRV

MAP FILE M139-23

MAP FILE M139-23