

# CENTERLINE MONUMENTATION

## WALNUT STREET, WARD AVENUE, AND CHESTNUT AVENUE

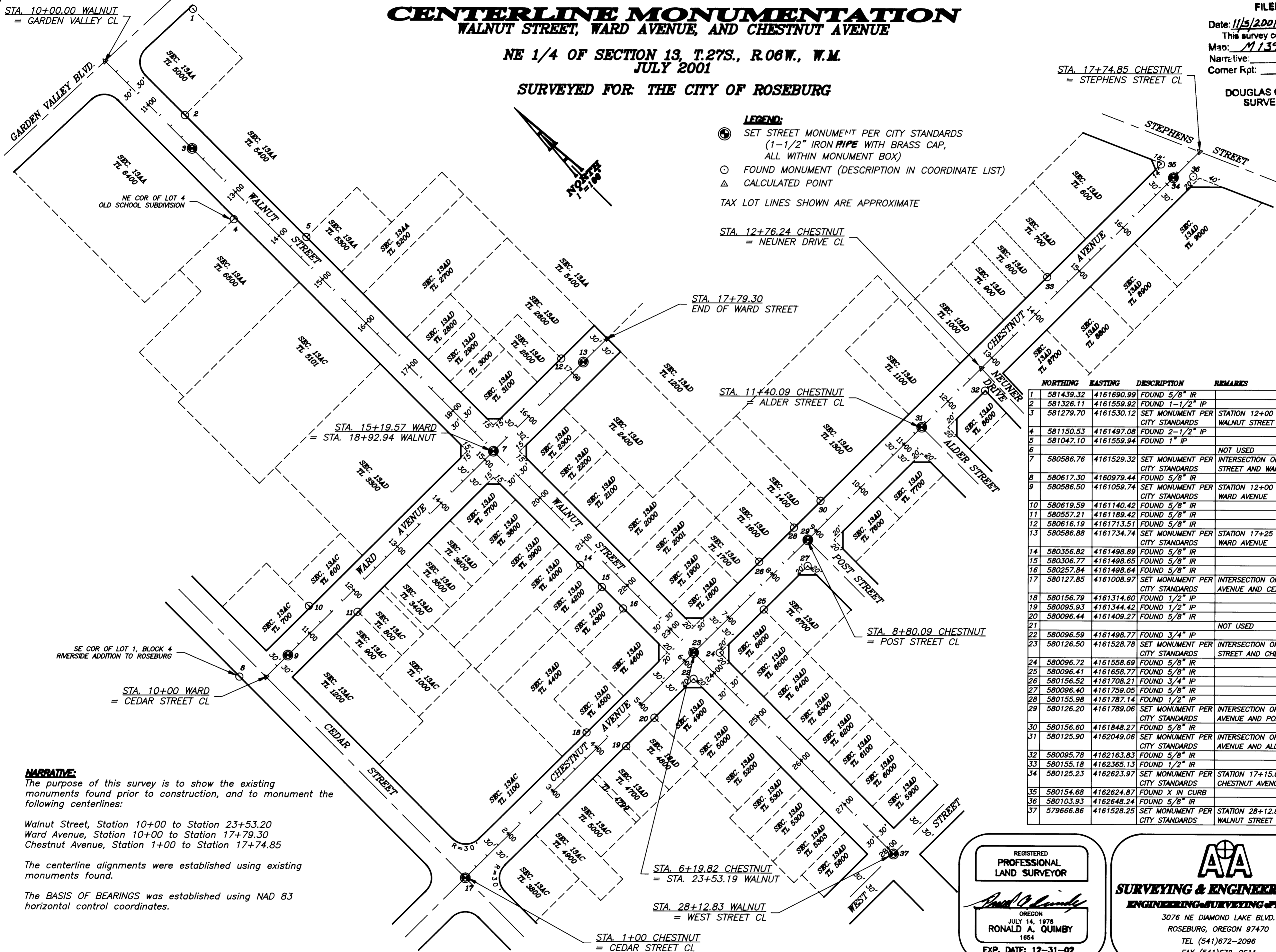
NE 1/4 OF SECTION 13, T.27S., R.06W., W.M.  
JULY 2001

SURVEYED FOR: THE CITY OF ROSEBURG

FILED

Date: 11/5/2001 By: JP  
This survey consists of:  
Map: M139-1  
Narrative: \_\_\_\_\_  
Corner Rpt: \_\_\_\_\_

DOUGLAS COUNTY  
SURVEYOR



**LEGEND:**  
 (Circle with dot) SET STREET MONUMENT PER CITY STANDARDS (1-1/2" IRON PIPE WITH BRASS CAP, ALL WITHIN MONUMENT BOX)  
 (Circle) FOUND MONUMENT (DESCRIPTION IN COORDINATE LIST)  
 (Triangle) CALCULATED POINT  
 TAX LOT LINES SHOWN ARE APPROXIMATE

STA. 12+76.24 CHESTNUT = NEUNER DRIVE CL

STA. 17+79.30 END OF WARD STREET

STA. 11+40.09 CHESTNUT = ALDER STREET CL

STA. 8+80.09 CHESTNUT = POST STREET CL

STA. 6+19.82 CHESTNUT = STA. 23+53.19 WALNUT

STA. 28+12.83 WALNUT = WEST STREET CL

STA. 1+00 CHESTNUT = CEDAR STREET CL

	NORTHING	EASTING	DESCRIPTION	REMARKS
1	581439.32	4161690.99	FOUND 5/8" IR	
2	581326.11	4161559.92	FOUND 1-1/2" IP	
3	581279.70	4161530.12	SET MONUMENT PER CITY STANDARDS	STATION 12+00 WALNUT STREET
4	581150.53	4161497.08	FOUND 2-1/2" IP	
5	581047.10	4161559.94	FOUND 1" IP	
6				NOT USED
7	580586.76	4161529.32	SET MONUMENT PER CITY STANDARDS	INTERSECTION OF WALNUT STREET AND WARD AVENUE
8	580617.30	4160979.44	FOUND 5/8" IR	
9	580586.50	4161059.74	SET MONUMENT PER CITY STANDARDS	STATION 12+00 WARD AVENUE
10	580619.59	4161140.42	FOUND 5/8" IR	
11	580557.21	4161189.42	FOUND 5/8" IR	
12	580616.19	4161713.51	FOUND 5/8" IR	
13	580586.88	4161734.74	SET MONUMENT PER CITY STANDARDS	STATION 17+25 WARD AVENUE
14	580356.82	4161498.89	FOUND 5/8" IR	
15	580306.77	4161498.65	FOUND 5/8" IR	
16	580257.84	4161498.64	FOUND 5/8" IR	
17	580127.85	4161008.97	SET MONUMENT PER CITY STANDARDS	INTERSECTION OF CHESTNUT AVENUE AND CEDAR STREET
18	580156.79	4161314.60	FOUND 1/2" IP	
19	580095.93	4161344.42	FOUND 1/2" IP	
20	580096.44	4161409.27	FOUND 5/8" IR	
21				NOT USED
22	580096.59	4161498.77	FOUND 3/4" IP	
23	580126.50	4161528.78	SET MONUMENT PER CITY STANDARDS	INTERSECTION OF WALNUT STREET AND CHESTNUT AVE.
24	580096.72	4161558.69	FOUND 5/8" IR	
25	580096.41	4161658.77	FOUND 5/8" IR	
26	580156.52	4161708.21	FOUND 3/4" IP	
27	580096.40	4161759.05	FOUND 5/8" IR	
28	580155.98	4161787.14	FOUND 1/2" IP	
29	580126.20	4161789.06	SET MONUMENT PER CITY STANDARDS	INTERSECTION OF CHESTNUT AVENUE AND POST STREET
30	580156.60	4161848.27	FOUND 5/8" IR	
31	580125.90	4162049.06	SET MONUMENT PER CITY STANDARDS	INTERSECTION OF CHESTNUT AVENUE AND ALDER STREET
32	580095.78	4162163.83	FOUND 5/8" IR	
33	580155.18	4162365.13	FOUND 1/2" IR	
34	580125.23	4162623.97	SET MONUMENT PER CITY STANDARDS	STATION 17+15.00 CHESTNUT AVENUE
35	580154.68	4162624.87	FOUND X IN CURB	
36	580103.93	4162648.24	FOUND 5/8" IR	
37	579666.86	4161528.25	SET MONUMENT PER CITY STANDARDS	STATION 28+12.83 WALNUT STREET

**NARRATIVE:**  
The purpose of this survey is to show the existing monuments found prior to construction, and to monument the following centerlines:

Walnut Street, Station 10+00 to Station 23+53.20  
Ward Avenue, Station 10+00 to Station 17+79.30  
Chestnut Avenue, Station 1+00 to Station 17+74.85

The centerline alignments were established using existing monuments found.

The BASIS OF BEARINGS was established using NAD 83 horizontal control coordinates.

REGISTERED  
PROFESSIONAL  
LAND SURVEYOR

*Ronald A. Quimby*

OREGON  
JULY 14, 1978  
RONALD A. QUIMBY  
1954  
EXP. DATE: 12-31-02

**AA**

**SURVEYING & ENGINEERING, INC.**  
ENGINEERING SURVEYING PLANNING

3076 NE DIAMOND LAKE BLVD.  
ROSEBURG, OREGON 97470  
TEL (541)672-2096  
FAX (541)672-0611

MAP FILE M139-1

MAP FILE M139-1