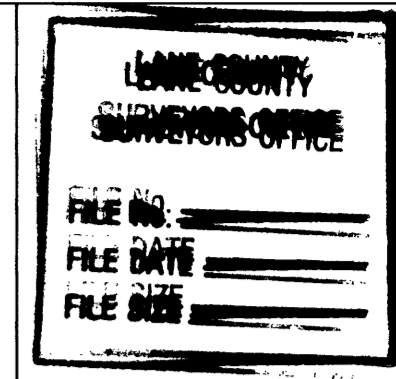




SCALE 1"=400'

FILED
Date: 9/25/2001 By: JP
This survey consists of:
Map: M138-71
Narrative:
Corner Rpt:

DOUGLAS COUNTY
SURVEYOR



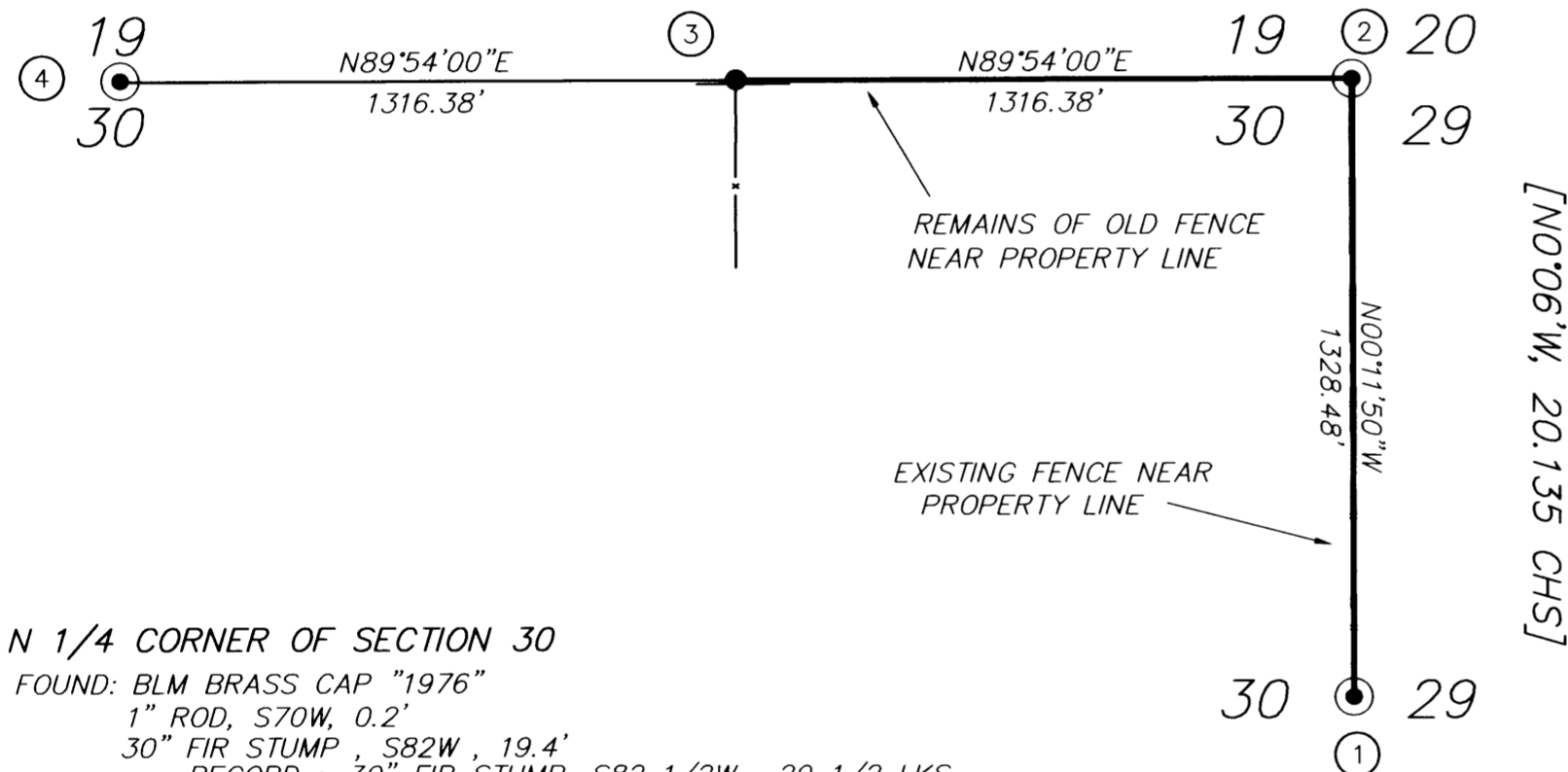
② SECTION CORNER 19, 20, 29, 30
FOUND: BLM BRASS CAP "1976"

- 20" FIR, N68E, 45.0'
RECORD : 8" FIR, N71 3/4E, 68 LKS
- 16" FIR, S19E, 57 LKS
RECORD : 6" FIR, S19E, 57 LKS
- 18" (6' HIGH) FIR STUMP, S19E, 34 LKS
RECORD : SAWED FIR STUMP, 18", S19E, 34 LKS
- FIR SNAG, N58 1/2E, 20.1'
RECORD : 43" FIR SNAG, N58 1/4E, 28 LKS
- 20" FIR, N51 3/4W, 39 1/2 LKS
RECORD : 16" FIR, N51 3/4W, 39 1/2 LKS
- 20" FIR, S7W, 193 1/2 LKS
RECORD : 8" FIR, S7W, 193 1/2 LKS

{N89°54'W, 40.00 CHS}
= BASIS OF BEARING =

- NARRATIVE -

THIS SURVEY WAS MADE IN MAY AND JUNE, 2001 BY DANIEL W. BAKER OF BAKER AND ASSOCIATES SURVEYORS, INC.. THE PURPOSE OF THIS SURVEY WAS TO LOCATE AND MARK IN THE FIELD A PORTION OF THE PROPERTY LINES OF ROCKING C RANCH L.L.C., IN SECTION 30, T23S, R4W, W.M.. A TOPCON 311S TOTAL STATION WAS USED TO PERFORM THIS SURVEY, WITH A MINIMUM ERROR OF CLOSURE OF 1' IN 40,000 FEET. THE FOLLOWING CORNERS WERE USED FOR CONTROL; THE NORTH 1/16 CORNER ON THE EAST LINE OF SECTION 30, THE NORTHEAST SECTION CORNER, THE NORTH 1/4 CORNER OF SECTION 30. THE EAST 1/16 CORNER WAS SET AT MIDPOINT ON THE EAST 1/2 OF THE NORTH LINE OF SECTION 30, AND WAS MONUMENTED WITH A 5/8"X30" REBAR WITH A YELLOW PLASTIC CAP MARKED "D.W. BAKER PLS 1978". THE PROPERTY LINES FROM THE EAST 1/16 CORNER TO THE NORTHEAST SECTION CORNER AND FROM THE NORTHEAST SECTION CORNER TO THE NORTH 1/16 CORNER WERE BLAZED(BLAZES PAINTED ORANGE) ON EITHER SIDE OF THE TRUE LINE. RECORD BEARINGS ON BEARING TREES ARE PER 1976 BLM SURVEY.



BASIS OF BEARING: EAST 1/2 NORTH LINE
SECTION 30, AS PER GLO

LEGEND

- - CORNERS FOUND (AS NOTED)
- - CORNERS SET (AS NOTED)
- - BLAZED PROPERTY LINE
- { } - RECORD DATA - 1855 GLO
- [] - RECORD DATA - 1976 BLM
- x- - EXISTING FENCE

④ N 1/4 CORNER OF SECTION 30

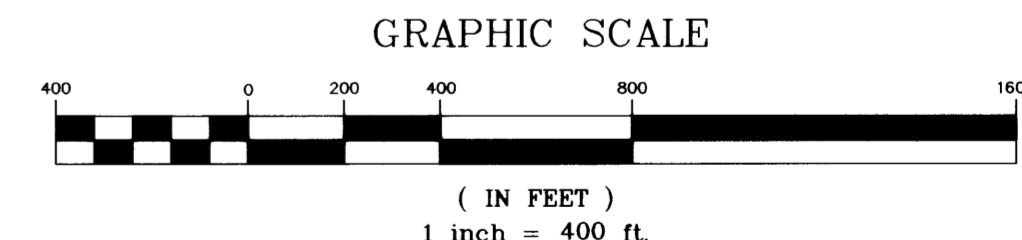
- FOUND: BLM BRASS CAP "1976"
- 1" ROD, S70W, 0.2'
- 30" FIR STUMP, S82W, 19.4'
RECORD : 30" FIR STUMP, S82 1/2W, 29 1/2 LKS
- 25" FIR, N58E, 7.5'
RECORD : 10" FIR, N59E, 11 LKS
- 20" FIR, S60W, 57.3'
RECORD : 11" FIR, S60W, 87 LKS

③ N 1/16 CORNER OF SECTION 30

- FOUND: BLM BRASS CAP "1976"
- 19" FIR, S34W, 28.0'
RECORD : 14" FIR, S36 1/2W, 39 1/2 LKS
- 16" CEDAR, N58E, 20.3'
RECORD : 8" CEDAR, N57E, 31 LKS

① E 1/16 CORNER OF SECTION 30

- SET: 5/8" REBAR WITH YELLOW PLASTIC CAP MARKED "D.W. BAKER PLS 1978"
- 13" FIR, S62W, 50.4', SCRIBED "E1/16 S30 BT"
- 22" FIR, N57W, 19.0', SCRIBED "E1/16 S19 BT"
- NOTE: FENCE CORNER BEARS S 9°41'11", 8.34'



THIS SURVEY WAS PREPARED USING AN HP51640A INK CARTRIDGE ON CONTINENTAL JPC4M2 POLYESTER FILM.

REGISTERED
PROFESSIONAL
LAND SURVEYOR

Daniel W. Baker

OREGON
JULY 16, 1982
DANIEL W. BAKER
1978

EXPIRES 12/31/01

SURVEY IN
NE 1/4 OF SECTION 30, T23S, R4W, W.M.
DOUGLAS COUNTY, OREGON

CLIENT:	ROCKING "C" RANCH
DRAWN BY:	LJJ
DATE:	6/12/01
FILE:	ROCKINGC
BAKER AND ASSOCIATES, SURVEYORS 1385 OAK STREET - SUITE 3 EUGENE, OREGON 97401 (541) 343-7243	

MAP FILE M138-71

MAP FILE M138-71