

**A SURVEY FOR SENECA JONES TIMBER COMPANY**  
**LOCATED IN THE NW 1/4 & SW 1/4 OF SECTION 8, T 28 S, R 3 W, W. M.,**  
**DOUGLAS COUNTY, OREGON**

FILED  
 Date: 8-2-2001 By: JLP  
 This survey consists of:  
 Map: M 138-46  
 Narrative:  
 Corner Rpt: CS 65/37-14 A Timber  
 DOUGLAS COUNTY SURVEYOR

**LEGEND:**

- FOUND BRASS CAP
- SET 5/8" X 36" IRON ROD W/ 2 1/2" ALUMINUM CAP MARKED  
 "T28S" "1/4 S7 S8" "R3W" "2001" "RLS 2295"
- ( ) RECORD PER 1910 GLO SURVEY BY GIBB FILED IN 1911
- LINES POSTED, RIBBONED, BLAZED & PAINTED  
 (POSTED AT 200' SPACING OR LESS; BLAZES FACING LINE  
 & LINE TREES ARE MARKED WITH 3 HACK MARKS  
 ON EACH SIDE)

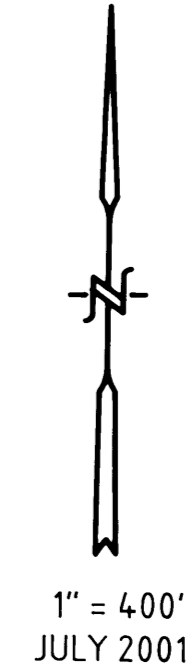
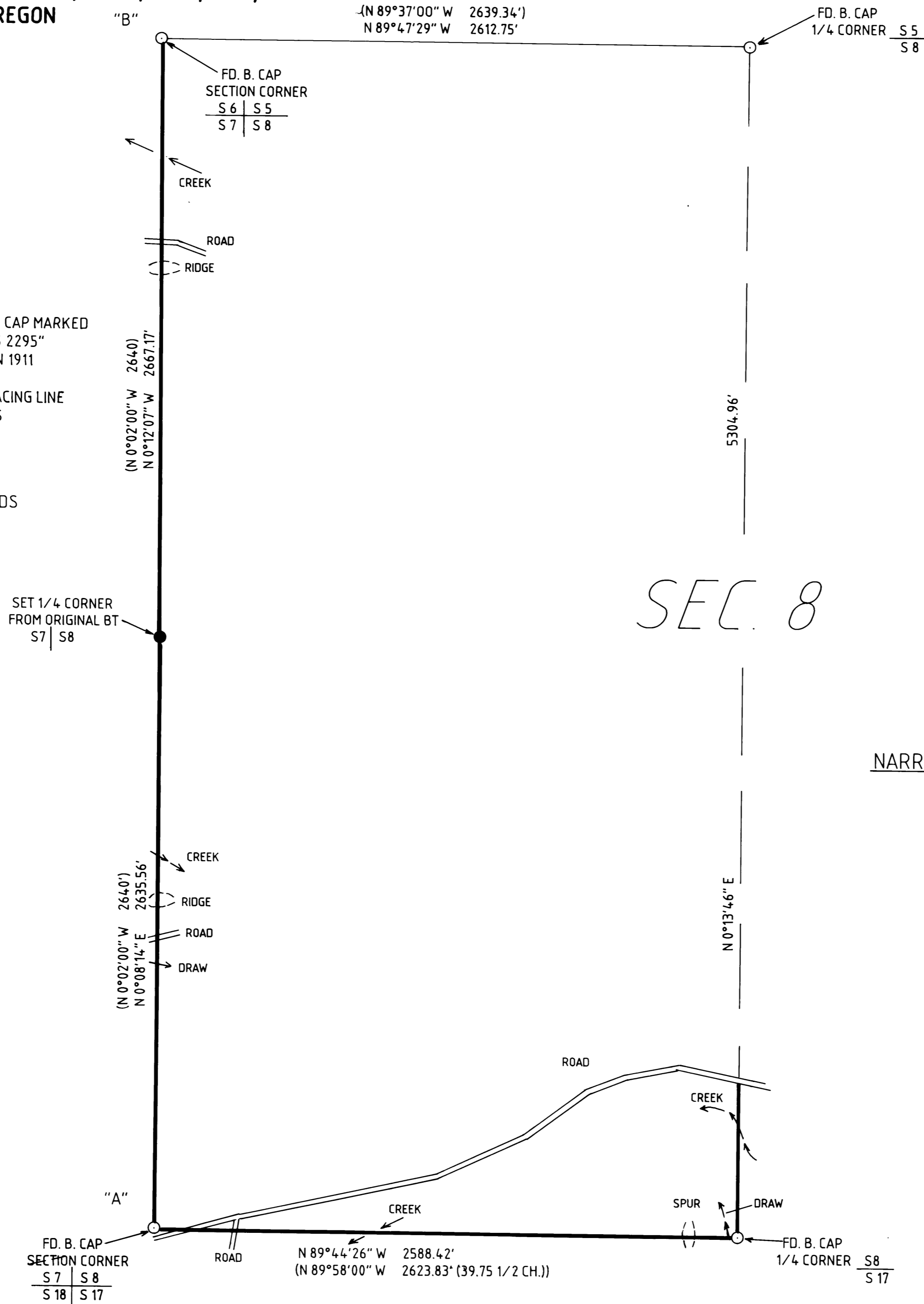
SEE C.S. \_\_\_\_\_ FOR CORNER RECORDS

**SURVEYED BY:**

MOUNTAINTOP LAND SURVEYING  
 7550 WILLIS CREEK RD.  
 WINSTON, OREGON 97496  
 (541) 679-5542



EXPIRES 12-31-02



SEC 8

**BASIS OF BEARING**  
 POINT "A" TO POINT "B"  
 N 0° 02' 00" W  
 PER 1910 GLO SURVEY BY GIBB

**NARRATIVE:**

THE PURPOSE OF THIS SURVEY IS TO MARK THE WESTERLY & SOUTHERLY BOUNDARIES AND PART OF THE EASTERLY BOUNDARY OF THE FOLLOWING DESCRIBED PROPERTY.  
 THAT PORTION OF PROPERTY DESCRIBED IN VOLUME 1200, PAGE 845 AS "SECTION 8: W 1/2"  
 THE N 1/4 CORNER, THE NW SECTION CORNER, THE SW SECTION CORNER, AND THE S 1/4 CORNER WERE ALL FOUND AS RENEWED FROM ORIGINAL EVIDENCE. AT THE W 1/4 CORNER WE CUT INTO A 29" HEMLOCK & FOUND SCRIBING "S 8" & ALSO A "4". WE SET THE CORNER AT N21°W 12.54 FT. FROM THIS ORIGINAL TREE.  
 LINES WERE POSTED, RIBBONED, BLAZED & PAINTED BETWEEN MONUMENTS AS SHOWN.

FIELD CREW: GREG & TREVOR LANG  
 EQUIP: NIKON DTM 420  
 COMPS: GREG LANG  
 DRAFTING: LAURIE LANG

MAP FILE M 138-46

MAP FILE M 138-46