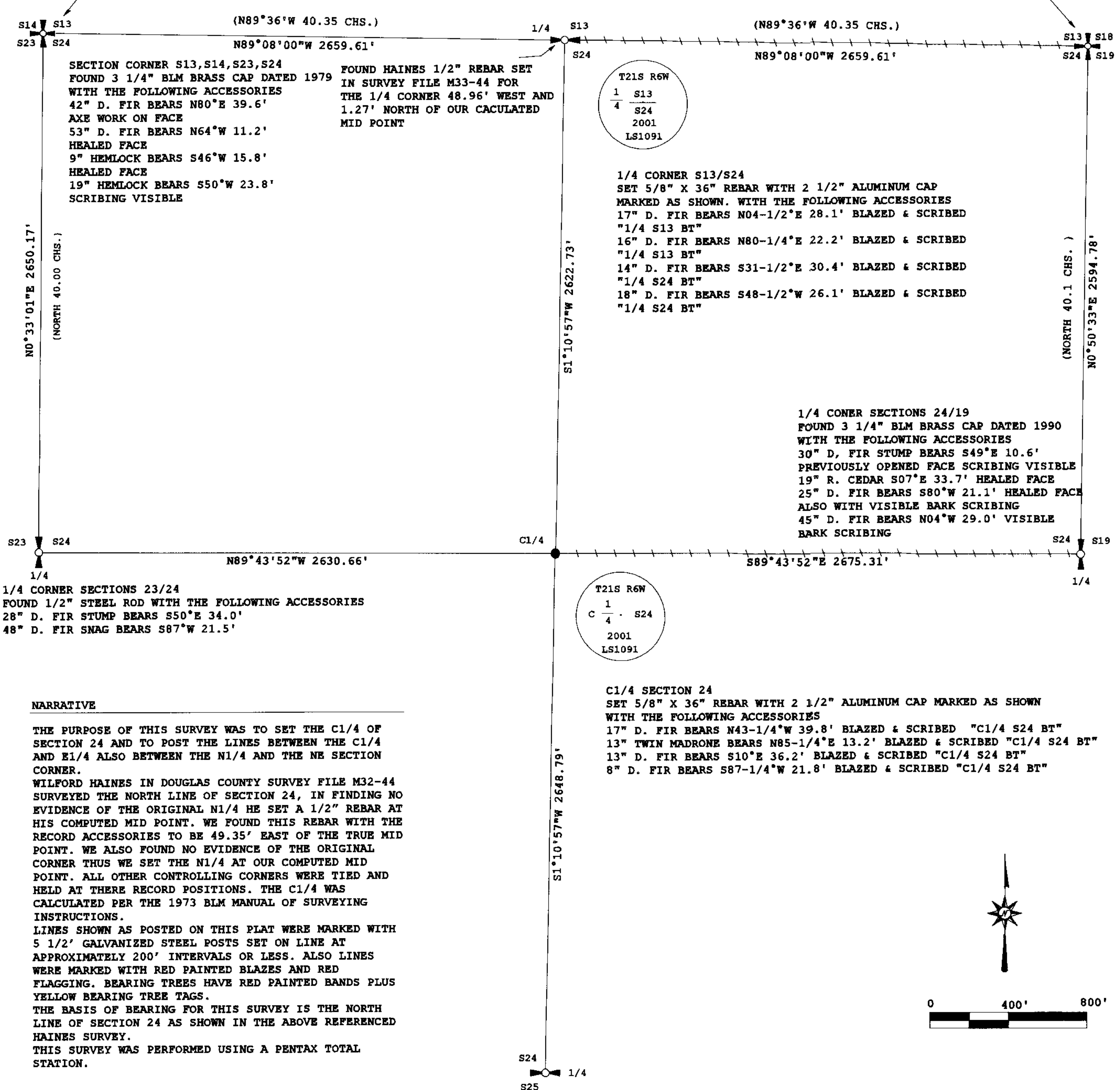


PROPERTY SURVEY
 FOR: SENECA JONES TIMBER COMPANY
 NE1/4, SECTION 24, T21S, R6W, W.M.
 DOUGLAS COUNTY, OREGON
 1, JUNE 2001

FILED
 Date: 7-2-2001 By: JC
 This survey consists of:
 Map: M138-26
 Narrative:
 Corner Rpt:
 DOUGLAS COUNTY
 SURVEYOR

SECTION CORNER S13, S18, S19, S24
 FOUND 2 1/2" COUNTY BRASS CAP DATED 1961
 WITH THE FOLLOWING ACCESSORIES
 30" R. CEDAR BEARS S60°W 33.0' SCRIBING
 VISIBLE IN PREVIOUSLY OPENED FACE
 19" D. FIR BEARS N69-1/2°E 38.7' HEALED FACE
 15" HEMLOCK BEARS S11°E 18.4' HEALED FACE
 27" R. CEDAR BEARS S54°W 57.0' HEALED FACE
 66" D. FIR BEARS N63°W 31.0' HEALED FACE

BASIS OF BEARING DOUGLAS COUNTY SURVEY FILE M32-44 [S89°08'E 5219.92'] S89°08'00"E 5319.22'



SECTION CORNER S13, S14, S23, S24
 FOUND 3 1/4" BLM BRASS CAP DATED 1979
 WITH THE FOLLOWING ACCESSORIES
 42" D. FIR BEARS N80°E 39.6'
 AXE WORK ON FACE
 53" D. FIR BEARS N64°W 11.2'
 HEALED FACE
 9" HEMLOCK BEARS S46°W 15.8'
 HEALED FACE
 19" HEMLOCK BEARS S50°W 23.8'
 SCRIBING VISIBLE

FOUND HAINES 1/2" REBAR SET
 IN SURVEY FILE M33-44 FOR
 THE 1/4 CORNER 48.96' WEST AND
 1.27' NORTH OF OUR CALCULATED
 MID POINT

T21S R6W
 1 S13
 4 S24
 2001
 LS1091

1/4 CORNER S13/S24
 SET 5/8" X 36" REBAR WITH 2 1/2" ALUMINUM CAP
 MARKED AS SHOWN. WITH THE FOLLOWING ACCESSORIES
 17" D. FIR BEARS N04-1/2°E 28.1' BLAZED & SCRIBED
 "1/4 S13 BT"
 16" D. FIR BEARS N80-1/4°E 22.2' BLAZED & SCRIBED
 "1/4 S13 BT"
 14" D. FIR BEARS S31-1/2°E 30.4' BLAZED & SCRIBED
 "1/4 S24 BT"
 18" D. FIR BEARS S48-1/2°W 26.1' BLAZED & SCRIBED
 "1/4 S24 BT"

1/4 CONER SECTIONS 24/19
 FOUND 3 1/4" BLM BRASS CAP DATED 1990
 WITH THE FOLLOWING ACCESSORIES
 30" D. FIR STUMP BEARS S49°E 10.6'
 PREVIOUSLY OPENED FACE SCRIBING VISIBLE
 19" R. CEDAR S07°E 33.7' HEALED FACE
 25" D. FIR BEARS S80°W 21.1' HEALED FACE
 ALSO WITH VISIBLE BARK SCRIBING
 45" D. FIR BEARS N04°W 29.0' VISIBLE
 BARK SCRIBING

1/4 CORNER SECTIONS 23/24
 FOUND 1/2" STEEL ROD WITH THE FOLLOWING ACCESSORIES
 28" D. FIR STUMP BEARS S50°E 34.0'
 48" D. FIR SNAG BEARS S87°W 21.5'

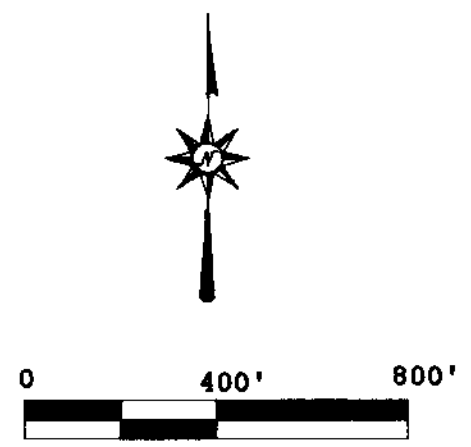
T21S R6W
 1 S24
 4 S24
 2001
 LS1091

C1/4 SECTION 24
 SET 5/8" X 36" REBAR WITH 2 1/2" ALUMINUM CAP MARKED AS SHOWN
 WITH THE FOLLOWING ACCESSORIES
 17" D. FIR BEARS N43-1/4°W 39.8' BLAZED & SCRIBED "C1/4 S24 BT"
 13" TWIN MADRONE BEARS N85-1/4°E 13.2' BLAZED & SCRIBED "C1/4 S24 BT"
 13" D. FIR BEARS S10°E 36.2' BLAZED & SCRIBED "C1/4 S24 BT"
 8" D. FIR BEARS S87-1/4°W 21.8' BLAZED & SCRIBED "C1/4 S24 BT"

NARRATIVE
 THE PURPOSE OF THIS SURVEY WAS TO SET THE C1/4 OF SECTION 24 AND TO POST THE LINES BETWEEN THE C1/4 AND E1/4 ALSO BETWEEN THE N1/4 AND THE NE SECTION CORNER.
 WILFORD HAINES IN DOUGLAS COUNTY SURVEY FILE M32-44 SURVEYED THE NORTH LINE OF SECTION 24, IN FINDING NO EVIDENCE OF THE ORIGINAL N1/4 HE SET A 1/2" REBAR AT HIS COMPUTED MID POINT. WE FOUND THIS REBAR WITH THE RECORD ACCESSORIES TO BE 49.35' EAST OF THE TRUE MID POINT. WE ALSO FOUND NO EVIDENCE OF THE ORIGINAL CORNER THUS WE SET THE N1/4 AT OUR COMPUTED MID POINT. ALL OTHER CONTROLLING CORNERS WERE TIED AND HELD AT THERE RECORD POSITIONS. THE C1/4 WAS CALCULATED PER THE 1973 BLM MANUAL OF SURVEYING INSTRUCTIONS.
 LINES SHOWN AS POSTED ON THIS PLAT WERE MARKED WITH 5 1/2' GALVANIZED STEEL POSTS SET ON LINE AT APPROXIMATELY 200' INTERVALS OR LESS. ALSO LINES WERE MARKED WITH RED PAINTED BLAZES AND RED FLAGGING. BEARING TREES HAVE RED PAINTED BANDS PLUS YELLOW BEARING TREE TAGS.
 THE BASIS OF BEARING FOR THIS SURVEY IS THE NORTH LINE OF SECTION 24 AS SHOWN IN THE ABOVE REFERENCED HAINES SURVEY.
 THIS SURVEY WAS PERFORMED USING A PENTAX TOTAL STATION.

- LEGEND**
- MONUMENT SET THIS SURVEY 5/8" X 36" REBAR WITH 2 1/2" ALUMINUM CAP MARKED AS SHOWN
 - 1/4 CORNER FOUND OR SET AS NOTED
 - ⊕ SECTION CORNER FOUND
 - LINE MARKED WITH RED PAINTED BLAZES, RED FLAGGING AND 5 1/2' GALVANIZED STEEL POSTS
 - [] RECORD DATA DOUGLAS COUNTY SURVEY FILE M32-44
 - () RECORD DATA G.L.O.

1/4 CORNER SECTIONS 25/25
 FOUND 1" X 1" HAINES T IRON WITH THE FOLLOWING ACCESSORIE
 52" R. CEDAR BEARS N68-34°W 32.3' WITH PREVIOUSLY OPENED FACE
 NEW BT THIS SURVEY
 28" HEMLOCK BEARS S23-3/4°W 30.9' BLAZED & SCRIBED "1/4 S25 BT"



REGISTERED
 PROFESSIONAL
 LAND SURVEYOR
 Robert B. Ward Jr.
 OREGON
 JULY 30, 1976
 LS 1091
 EXPIRES: 6/30/02

Ward NorthWest, Inc.
 P.O. BOX 105 FLORENCE, OR 97439
 (541) 997-9201 FAX: 541-997-3546