

# MAP OF SURVEY

LOCATED in the NW & SW 1/4's of Section 5, T. 27 S., R. 3 W., W.M.  
in Douglas County, Oregon.

May 30, 2001

FILED

Date: 6/6/2001 By: JP  
This survey consists of:  
Map: M 138-18  
Narrative: CS 65/34-8  
Corner Rpt: CS 65/34-8

DOUGLAS COUNTY  
SURVEYOR  
JP

SURVEYED FOR: ROSEBURG RESOURCES  
P.O. BOX 1088  
ROSEBURG, OREGON

SURVEYED BY: DAVID EDWARDS LAND SURVEYING  
P.O. BOX  
OAKLAND, OREGON 97462  
PHONE: (541) 459-0512

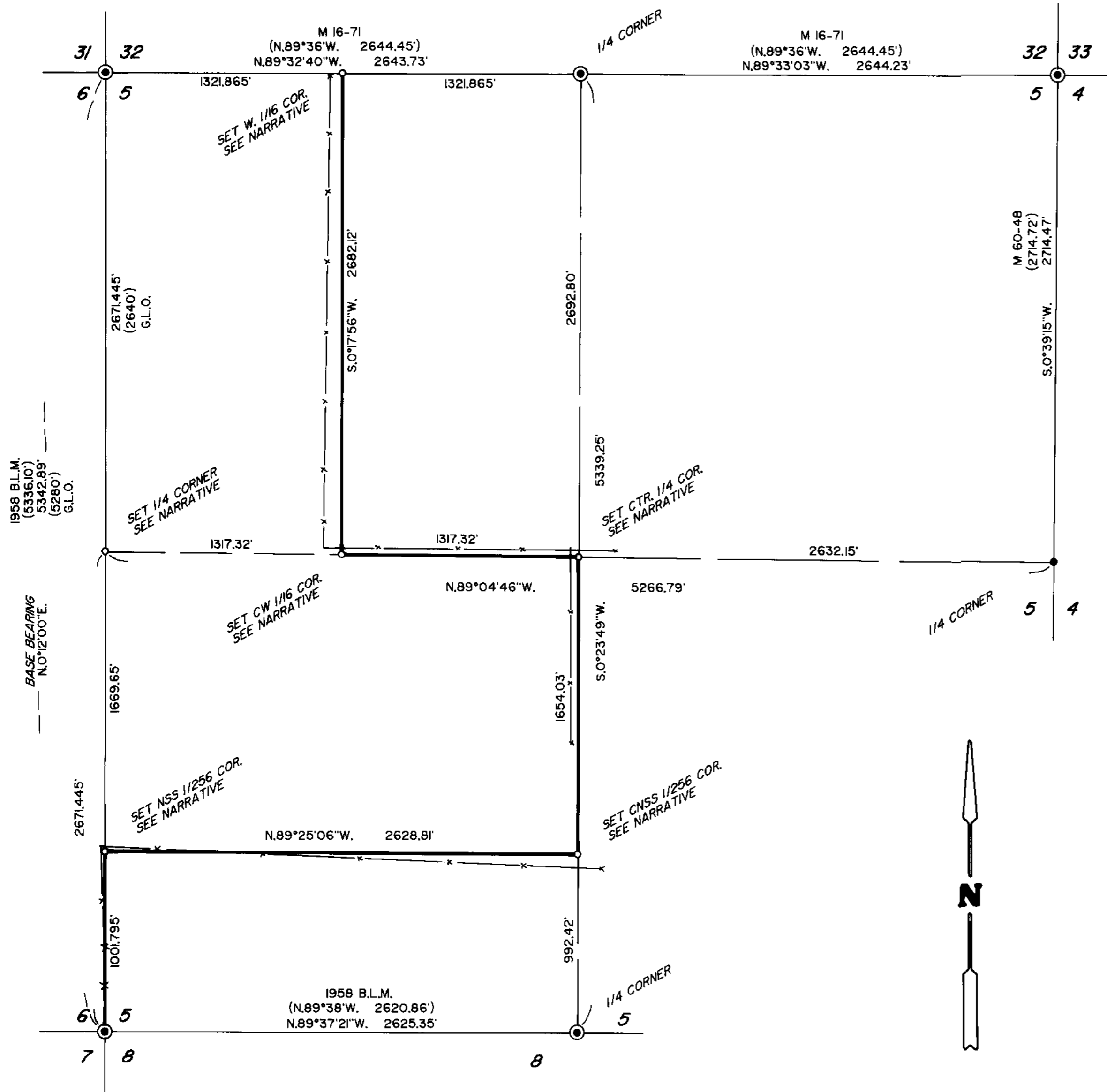
REGISTERED  
PROFESSIONAL  
LAND SURVEYOR  
*David A. Edwards*  
OREGON  
JULY 26, 1988  
DAVID A. EDWARDS  
2339  
EXPIRES 12/31/01

### LEGEND

- ⊙ INDICATES B.L.M. OR D.C.S. BRASS CAP FOUND.
- INDICATES 5/8" DIAM. IRON ROD FOUND PER M 60-48. (SEE NARRATIVE)
- INDICATES 5/8" X 44" STEEL ROD W/ALUM. CAP SET. (SEE NARRATIVE)
- ( ) DENOTES RECORD DATA AS SHOWN.
- X—X—X FENCE LINE
- INDICATES LINE FLAGGED, POSTED AND BLAZED THIS SURVEY.

B.L.M. = BUREAU OF LAND MANAGEMENT  
D.C.S. = DOUGLAS COUNTY SURVEYOR  
SCALE: 1" = 500'  
BASIS OF BEARINGS: 1958 B.L.M. RESURVEY AS SHOWN.

NARRATIVE IS A SEPARATE DOCUMENT.  
**CS 65/34-8**



MAP FILE M 138-18

MAP FILE M 138-18

# David A. Edwards - Professional Land Surveyor

P.O. Box 361  
Oakland, OR 97462

FILED

(541) 459-0512

Date: 6/6/2001 By: DP

This survey consists of:

Map: M 138-18

Narrative: CS 65/34-B

Corner Rpt: \_\_\_\_\_



DOUGLAS COUNTY  
SURVEYOR

SURVEY NUMBER M 138-18

SURVEY NARRATIVE TO COMPLY WITH CHAPTER 209, PARAGRAPH 250.  
OREGON REVISED STATUTES

SURVEY FOR: Roseburg Resources Co.  
P.O. Box 1088  
Roseburg, Oregon 97470

LOCATION: In the NW and SW 1/4's of Section 5, T. 27 S.,  
R. 3 W., W.M. in Douglas County, Oregon.

PURPOSE: To locate and monument certain boundaries in and  
around Section 5 as shown on the accompanying  
map.

PROCEDURE: Utilizing ties to the found controlling Gov't.  
corners around Section 5, I compute the  
subdivision of said Section as shown on the  
accompanying map. A diligent search was made for  
original and 1922 D.C.S. evidence at the 1/4  
corner to Sections 5 and 6 with negative results.  
Said corner was set by proportionate method.  
The proportionate 1/4 corner to Sections 4 and 5,  
set on M 60-48 by using the G.L.O. plat record  
lotting distances on the East line of Section 5,  
was held as the correct position. Random  
traverses were then run along the boundaries to  
be marked. After prudent adjustment the random  
points were then offset to true line and the true  
line was blazed on each side and steel posts were  
set along the line. Red flagging was placed along  
all blazed lines and the blazes painted red.  
Monuments set on this survey are described on the  
accompanying map and are stamped "ROSEBURG  
RESOURCES COMPANY" and "L.S. 2339" and according  
to the 1972 B.L.M. Manual. Bearing trees are  
scribed according to said Manual, are measured to  
the center of tree at root crown and are situated  
as follows:

At the West 1/16 Cor. to Sections 32 and 5:

A 17" diam. W. Oak brs. N. 68° E., 37.80 feet.  
A 9" diam. W. Oak bears S. 77° E., 72.80 feet.

At the NW Corner of Section 5:

The Douglas County Surveyor's office is  
currently rehabilitating this corner.  
I find the B.L.M. brass cap.

At the Center 1/4 Corner of Section 5:

A 16" diam. B. Oak brs. N. 33° E., 24.50 ft.  
An 11" diam. Fir bears S. 41° E., 39.77 ft.  
An 8" diam. W. Oak brs. S. 74° W., 9.33 feet.  
A 16" diam. Myrtle brs. N. 49° W., 36.87 ft.

At the 1/4 Corner to Sections 4 and 5:

A 9" diam. W. Oak brs. N. 55 1/2° E, 89.8 ft.  
A 9" diam. W. Oak brs. S. 83° E., 61.1 feet.  
A 10" diam. Mad. (dead) brs. N. 40° W., 49.1 ft  
The 3/4" diam. iron pipe set on C.S. 58/53-1  
bears N. 0° 31' E., 16.67 feet.

# David A. Edwards - Professional Land Surveyor

P.O. Box 361  
Oakland, OR 97462



(541) 459-0512

At the SW Corner of Section 5:

Old B.T.'s: A 10" diam. Mad. bears N.47 1/2°E., 14.52 ft.  
A 9" diam. Mad. bears S. 66° W., 8.58 feet.  
A 9" diam. Mad. bears N. 36° W., 41.58 feet

New B.T.: An 8" diam. Mad. bears S. 40° E., 14.40 ft.

At the South 1/4 Corner of Section 5:

Old B.T.'s: A 20" diam. Cedar bears N. 51° W., 35.64 ft.  
A 30" diam. Fir bears S. 20° W., 2.64 feet.  
A 31" diam. Fir bears N. 20° E., 2.64 feet.  
A 12" diam. Fir bears S. 61° E., 21.12 feet.

At the NE Corner of Section 5:

Old B.T.'s: A 10" di. W. Oak brs. N.47°E., (N.53°E.) 53.9 ft.  
A 16" diam. Cedar brs. S. 14° E., 62.0 feet.  
A 23" diam. Cedar brs. S.13 1/2°W., 58.1 ft.  
A 14" diam. Cedar brs. N. 83° W., 159.8 ft.

At the North 1/4 Corner of Section 5:

As per 2001 renewal.

At the NSS 1/256 Corner of Sections 5 and 6:

A 12" diam. Mad. bears S. 40° E., 24.75 feet.  
A 22" diam. Fir bears S. 33° W., 5.60 feet.

At the CNSS 1/256 Corner of Section 5:

An 8" diam. Alder brs. N. 1° E., 11.59 feet.  
A 10" diam. Fir bears N. 80° W., 60.52 feet.

At the 1/4 Corner common to Sections 5 and 6:

A 14" diam. Fir bears N. 30° E., 25.70 feet.  
A 9" diam. Fir bears N. 76° E., 25.02 feet.  
A 15" diam. Fir bears S. 1° E., 20.30 feet.  
A 9" diam. Fir bears S. 74° W., 2.48 feet.

BASIS OF BEARINGS: B.L.M. resurvey as shown on the accompanying map.

EQUIPMENT: Nikon DTM 430 Electronic Total Station.

DATE COMPLETED: May 30, 2001.



*David A. Edwards*



Expires 12/31/01