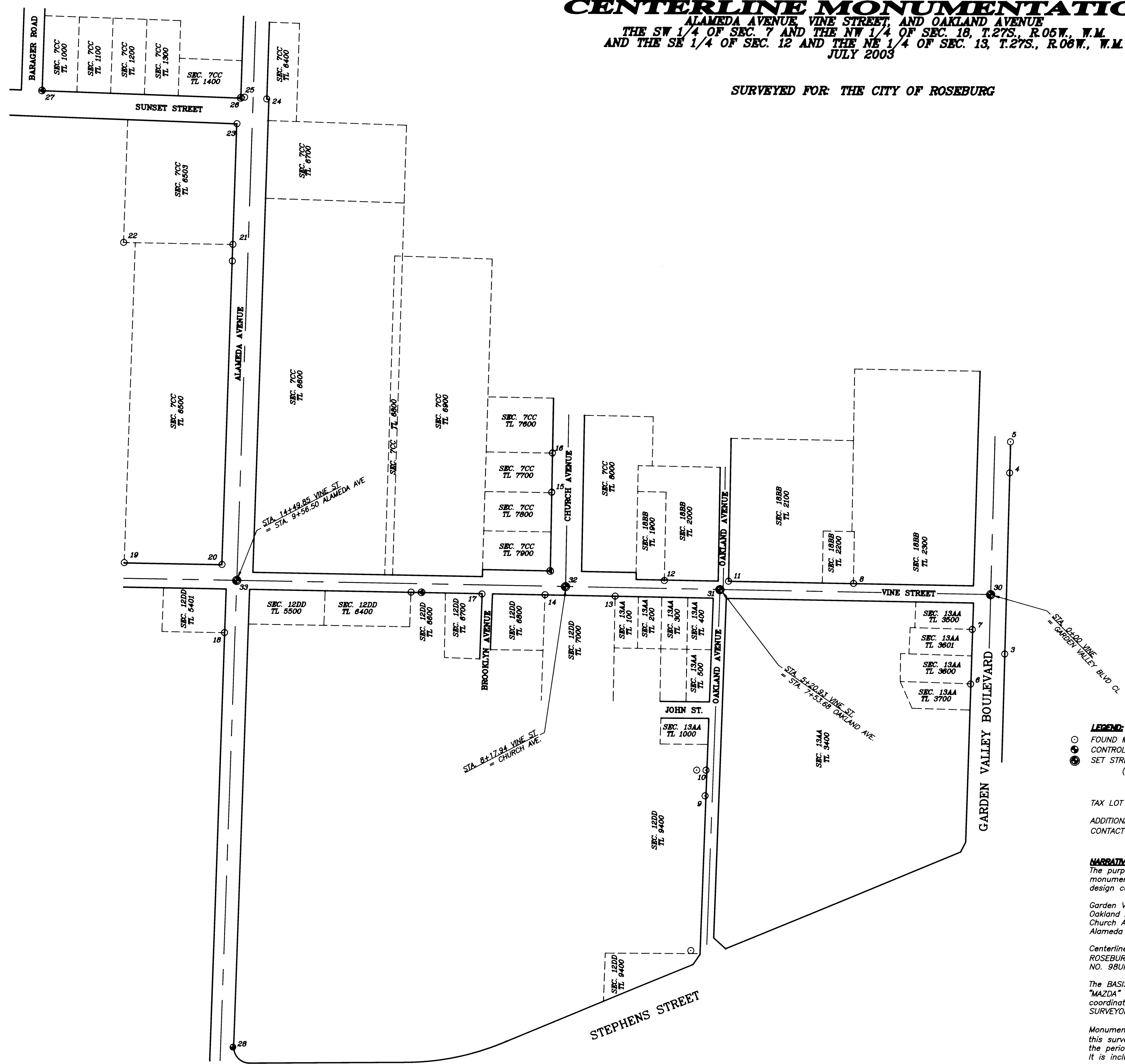


# CENTERLINE MONUMENTATION

ALAMEDA AVENUE, VINE STREET, AND OAKLAND AVENUE  
 THE SW 1/4 OF SEC. 7 AND THE NW 1/4 OF SEC. 18, T.27S., R.05W., W.M.  
 AND THE SE 1/4 OF SEC. 12 AND THE NE 1/4 OF SEC. 13, T.27S., R.06W., W.M.  
 JULY 2003

SURVEYED FOR: THE CITY OF ROSEBURG

FILED  
 Date: 8-14-2003 By: JC  
 This survey consists of:  
 Map: M137-65  
 Narrative:  
 Corner Isp:  
 DOUGLAS COUNTY  
 SURVEYOR



NO.	NORTHING	EASTING	DESCRIPTION
1	582493.66	1240722.92	DCSO "MAZDA"
2	582936.39	1240693.77	DCSO "FORD"
3	581455.68	1241566.65	5/8" IR
4	581447.56	1241914.63	5/8" IR
5	581446.08	1241974.70	5/8" IR
6	581521.19	1241508.81	5/8" IR
7	581518.32	1241613.57	5/8" IR
8	581747.03	1241701.36	5/8" IR
9	582031.09	1241291.78	5/8" IR
10	582029.48	1241341.20	5/8" IR
11	581987.64	1241704.62	5/8" IR
12	582111.04	1241705.33	5/8" IR
13	582205.58	1241674.79	5/8" IR
14	582340.31	1241676.95	5/8" IR
15	582328.28	1241873.79	5/8" IR
16	582327.17	1241949.57	5/8" IR
17	582461.49	1241677.82	5/8" IR
18	582956.02	1241601.20	5/8" IR
19	583149.17	1241735.45	5/8" IR
20	582961.43	1241732.52	5/8" IR
21	582942.82	1242349.02	5/8" IR
22	583152.73	1242352.32	5/8" IR
23	582935.73	1242581.38	5/8" IR
24	582878.69	1242629.32	5/8" IR
25	582921.22	1242632.57	5/8" IR
26	582928.63	1242631.20	X IN CONC
27	583310.60	1242644.71	3" IP
28	582936.16	1240803.65	OSHD R/W MON.
29	580432.19	1241643.10	DCSO "49-1"
30	581483.13	1241681.17	SET MONUMENT PER CITY STANDARDS
31	582004.00	1241688.66	SET MONUMENT PER CITY STANDARDS
32	582300.98	1241692.92	SET MONUMENT PER CITY STANDARDS
33	582932.82	1241702.01	SET MONUMENT PER CITY STANDARDS

- LEGEND:**
- FOUND MONUMENT (DESCRIPTION IN COORDINATE LIST)
  - CONTROL MONUMENT
  - ⊙ SET STREET MONUMENT PER CITY STANDARDS (1-1/2" IRON ROD WITH BRASS CAP, ALL WITHIN MONUMENT BOX)

TAX LOT LINES SHOWN ARE APPROXIMATE  
 ADDITIONAL RIGHT-OF-WAY WAS DEDICATED AS PART OF THIS PROJECT  
 CONTACT THE CITY OF ROSEBURG FOR INSTRUMENT NUMBERS

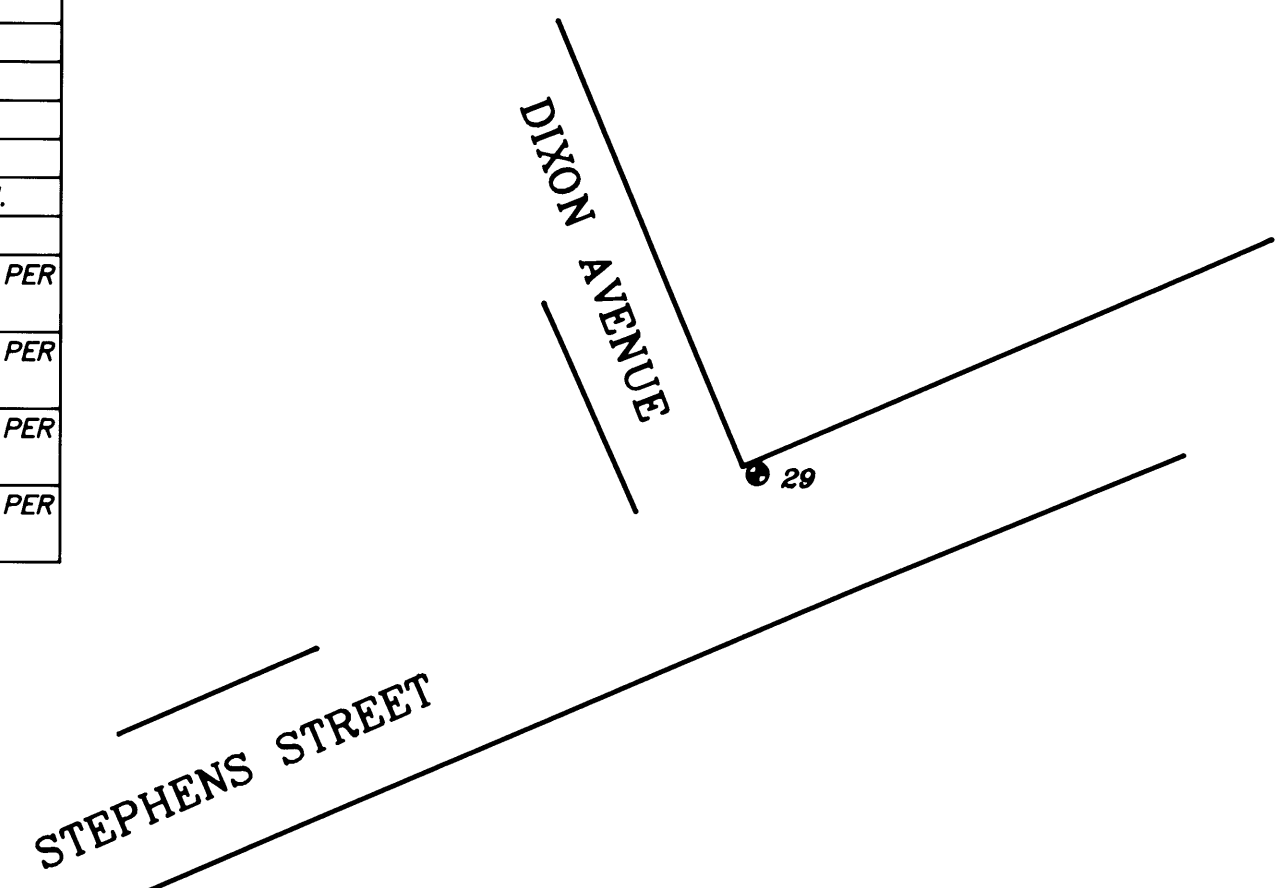
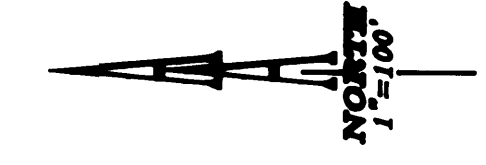
**NARRATIVE:**  
 The purpose of this survey is to show the existing monuments found prior to construction, and to monument the design centerline of Vine Street and the following intersections:

- Garden Valley Blvd.
- Oakland Ave.
- Church Ave.
- Alameda Ave.

Centerlines are based on construction centerline per CITY OF ROSEBURG VINE/ALAMEDA/OAKLAND IMPROVEMENTS, PROJECT NO. 98UR01, Dated FEBRUARY 2002.

The BASIS OF BEARINGS was established between monument "MAZDA" and monument "FORD" using horizontal control coordinates per the OFFICE OF THE DOUGLAS COUNTY SURVEYOR, Douglas County, Oregon.

Monument "FORD" was tied during the preliminary phases of this survey. Monument "FORD" has been destroyed between the period of gathering field data and creating this survey. It is included on this survey for informational purposes only.



REGISTERED  
 PROFESSIONAL  
 LAND SURVEYOR  
  
 OREGON  
 JULY 16, 1978  
**HERMAN A. PIESKE**  
 1981  
 EXP. DATE: 12-31-04

**AAA**  
**SURVEYING & ENGINEERING, INC.**  
 ENGINEERING-SURVEYING-PLANNING  
 3076 NE DIAMOND LAKE BLVD.  
 ROSEBURG, OREGON 97470  
 TEL (541)672-2096  
 FAX (541)672-0611