

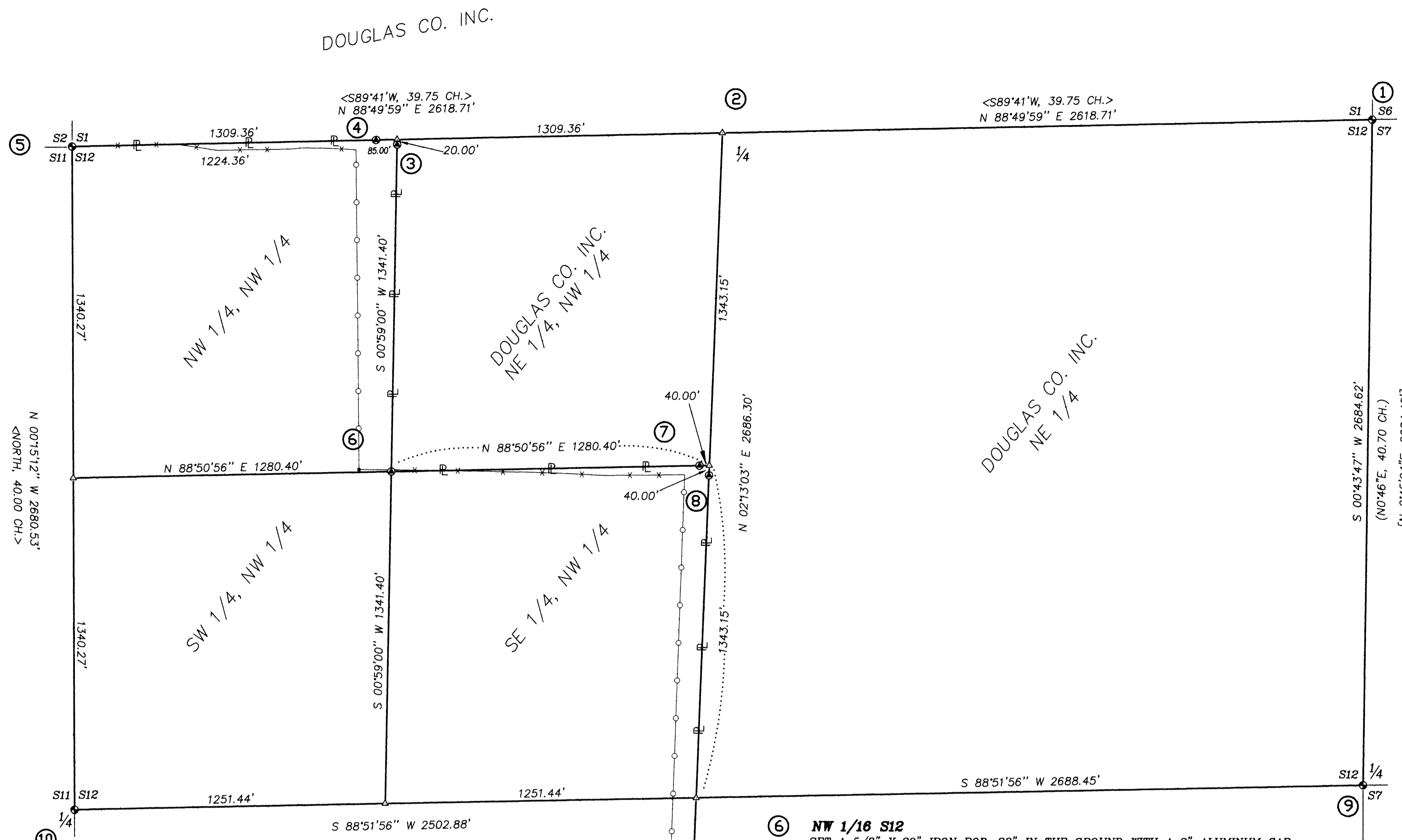
RECORD OF SURVEY

LOCATED IN SECTION 12, T25S, R4W, W.M. DOUGLAS COUNTY, OREGON

FILED
Date: 3/26/03 By: hlv
This survey consists of:
Map: M137-57
Narrative:
Corner Rpt: _____
DOUGLAS COUNTY
SURVEYOR

REGISTERED
PROFESSIONAL
LAND SURVEYOR

K. O. DEGROOT
OREGON
JULY 17, 1981
KRISTIAN O. DEGROOT
1941
RENEWAL DATE: 12-31-03



NARRATIVE:

THE PURPOSE OF THIS SURVEY WAS TO SUBDIVIDE SECTION 12, MONUMENT THE CN 1/16 CORNER, NW 1/16 CORNER AND WEST 1/16 OF SECTIONS 1 AND 12 AND TO POST, BLAZE, PAINT AND FLAG THE LINES AS SHOWN ON THE FACE OF THE MAP. CONTROLLING CORNERS 5, 10 AND 11 WERE FOUND AS RESTORED IN THEIR ORIGINAL POSITION. CONTROLLING CORNER 1 AS FOUND AS ESTABLISHED OR RESTORED BY PROPORTIONATE MEASUREMENT UNDER A 1914 USGLO DEPENDENT RESURVEY OF THE EAST LINE OF SECTION 12.

A GPS CONTROL SURVEY WAS COMPLETED AND RANDOM TRAVERSE LOOPS WERE SURVEYED BETWEEN THE GPS POINTS, CONTROLLING CORNERS, AND ALONG THE LINES POSTED. USING THESE CORNER POSITIONS, SECTION 18 WAS SUBDIVIDED AS PER THE MANUAL OF SURVEYING INSTRUCTIONS, 1973 AND THE LAWS OF THE STATE OF OREGON. BOTH THE CN 1/16 OF SECTION 12 AND THE W 1/16 OF S1/S2 FELL IN THE CHANNEL OF GASSEY CREEK AND WITNESS CORNERS WERE SET SOUTH AND WEST OF EACH CORNER POSITION AS DESCRIBED BELOW.

THIS SURVEY WAS PERFORMED BY LES FANNING, MICKEY CALVERT AND MATT DIXON USING LEICA SR299 GPS RECEIVER AND A NIKON DMT 531 TOTAL STATION WITH COMPUTATIONS BY KRIS DEGROOT AND DRAFTING BY BILL WARREN.

CORNER DESCRIPTIONS:

ALL NEW BEARING TREES HAVE DOUBLE BLAZED FACES WITH A BRASS WASHER STAMPED "PLS 1941" NAILED INTO THE LOWER BLAZE. BEARINGS ARE TAKEN TO THE CENTER OF THE TREE AT THE ROOT CROWN AND DISTANCES ARE MEASURED TO A NAIL IN THE ROOT CROWN AT THE SIDE AND CENTER OF THE TREE. ALL BEARING TREES HAVE A 6" RED BAND PAINTED AROUND THE TREE AND THE BLAZED FACE PAINTED RED AND BEARING TREE SIGNS NAILED TO THE TREE.

① **S1/S6**
S12/S7 FOUND 1944 USGLO BCIP & ACCESSORIES PER PLSS ID. NO. 700600

② **1/4 S1/S12**
CORNER SEARCHED FOR, NO EVIDENCE FOUND.

③ **SOUTH WITNESS CORNER TO W 1/16, S1/S12**
(BEARS S 0°59'01" W, 20.00 FEET FROM THE TRUE CORNER POSITION.)
SET A 5/8" X 30" IRON ROD 28" IN THE GROUND WITH A 2" ALUMINUM CAP STAMPED:

T25S R4W
W1/16 S1
S12 WC
2003
PLS 1941
20.00'

FROM WHICH A NEW BEARING TREE:
A 11" HEMLOCK BEARS S.3°E, 24.7 FEET SCRIBED "WC W1/16 S12 BT"
AND NEW BEARING OBJECT:
A 5/8" IRON ROD BEARS N 77°49'19"W, 86.59 FEET.

④ **WEST WITNESS CORNER TO W 1/16, S1/S12**
(BEARS S 88°49'59" W, 85.00 FEET FROM THE TRUE CORNER POSITION.)
SET A 5/8" X 30" IRON ROD 28" IN THE GROUND WITH A 2" ALUMINUM CAP STAMPED:

T25S R4W
W1/16 S1
S12 WC
2003
PLS 1941
85.00'

FROM WHICH A NEW BEARING TREE:
A 10" ALDER BEARS S.6°E, 20.1 FEET SCRIBED "WC W1/16 S12 BT"
AND NEW BEARING OBJECT:
A 5/8" IRON ROD BEARS S 77°49'19"E, 86.59 FEET.

⑤ **S1/S6**
S12/S7 FOUND 1964 DCSO BCIP & ACCESSORIES PER PLSS ID. NO. 600600

⑥ **NW 1/16 S12**
SET A 5/8" X 30" IRON ROD, 28" IN THE GROUND WITH A 2" ALUMINUM CAP STAMPED:

T25S R4W
NW 1/16
S12
2003
PLS 1941

FROM WHICH NEW BEARING TREES:
A 21" D.FIR BEARS N.38°E, 35.4 FEET SCRIBED "WC NW 1/16 S12 BT"
A 5" D.FIR BEARS N 7°W, 20.1 FEET SCRIBED "WC NW 1/16 S12 BT"

⑦ **WEST WITNESS CORNER TO CN 1/16, S12**
(BEARS S 88°50'56" W, 40.00 FEET FROM THE TRUE CORNER POSITION.)
SET A 5/8" X 30" IRON ROD 28" IN THE GROUND WITH A 2" ALUMINUM CAP STAMPED:

T25S R4W
40.00'
C WC
N1/16 S12
C
2003
PLS 1941

FROM WHICH A NEW BEARING TREE:
A 10" W. FIR BEARS S.70°30'W, 15.5 FEET SCRIBED "WC CN 1/16 S12 BT"
AND A NEW BEARING OBJECT:
A 5/8" IRON ROD BEARS S 44°28'01"E, 54.88 FEET.

⑧ **SOUTH WITNESS CORNER TO CN 1/16, S12**
(BEARS S 2°13'03" W, 40.00 FEET FROM THE TRUE CORNER POSITION.)
SET A 5/8" X 30" IRON ROD 28" IN THE GROUND WITH A 2" ALUMINUM CAP STAMPED:

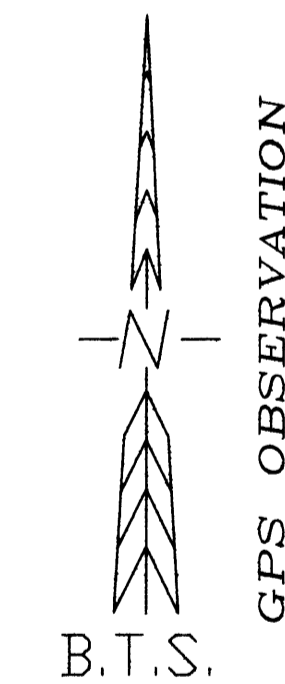
T25S R4W
C WC
N1/16 S12
C
2003
PLS 1941
40.00'

FROM WHICH A NEW BEARING TREE:
A 19" D.FIR BEARS S.1°30'E, 89.8 FEET SCRIBED "WC CN1/16 S12 BT"
AND A NEW BEARING OBJECT:
A 5/8" IRON ROD BEARS S 44°28'01"E, 54.88 FEET.

⑨ **1/4 S12/S7**
FOUND 1944 USGLO BCIP AND ACCESSORIES PER 700540

⑩ **1/4 S11/S12**
FOUND 1 1/4" AXLE AND ACCESSORIES PER PLSS ID. NO. 600540

⑪ **1/4 S12/S13**
FOUND 1956 DCSO BCIP BURIED 12" AND ACCESSORIES PER PLSS ID. NO. 640500.



GPS OBSERVATION

LEGEND:

- = SET 5/8" x 30" IRON ROD WITH 2" ALUMINUM CAP AS NOTED.
- = FOUND PLSS OR MONUMENT AS NOTED
- △ = COMPUTED POINT
- = PROPERTY LINES POSTED WITH 6" STEEL POSTS.
- () = RECORD PER 1944 USBLM DEPENDENT RESURVEY
- [] = RECORD PER M 56-3
- < > = RECORD PER USGLO
- x — x — = EXISTING FENCELINE
- — ○ — ○ = APPROXIMATE FENCELINE

BTS ENGINEERING & SURVEYING, INC.
431 S.E. MAIN ST., ROSEBURG, OR 97470
PHONE (541) 673-0966 FAX (541) 673-0105

SCALE: 1" = 300'	FOR: DOUGLAS COUNTY, INC. P.O. BOX 848 WINCHESTER, OR 97495	JOB #: 03-008 FILE: 25-4-12.DWG SHEET 1 OF 1
DATE: MARCH 10, 2003		