

SCALE 1"=200'

CE 1/16 SECTION 20

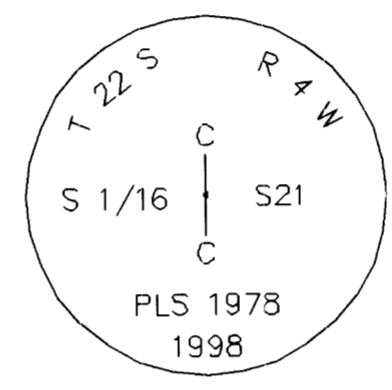
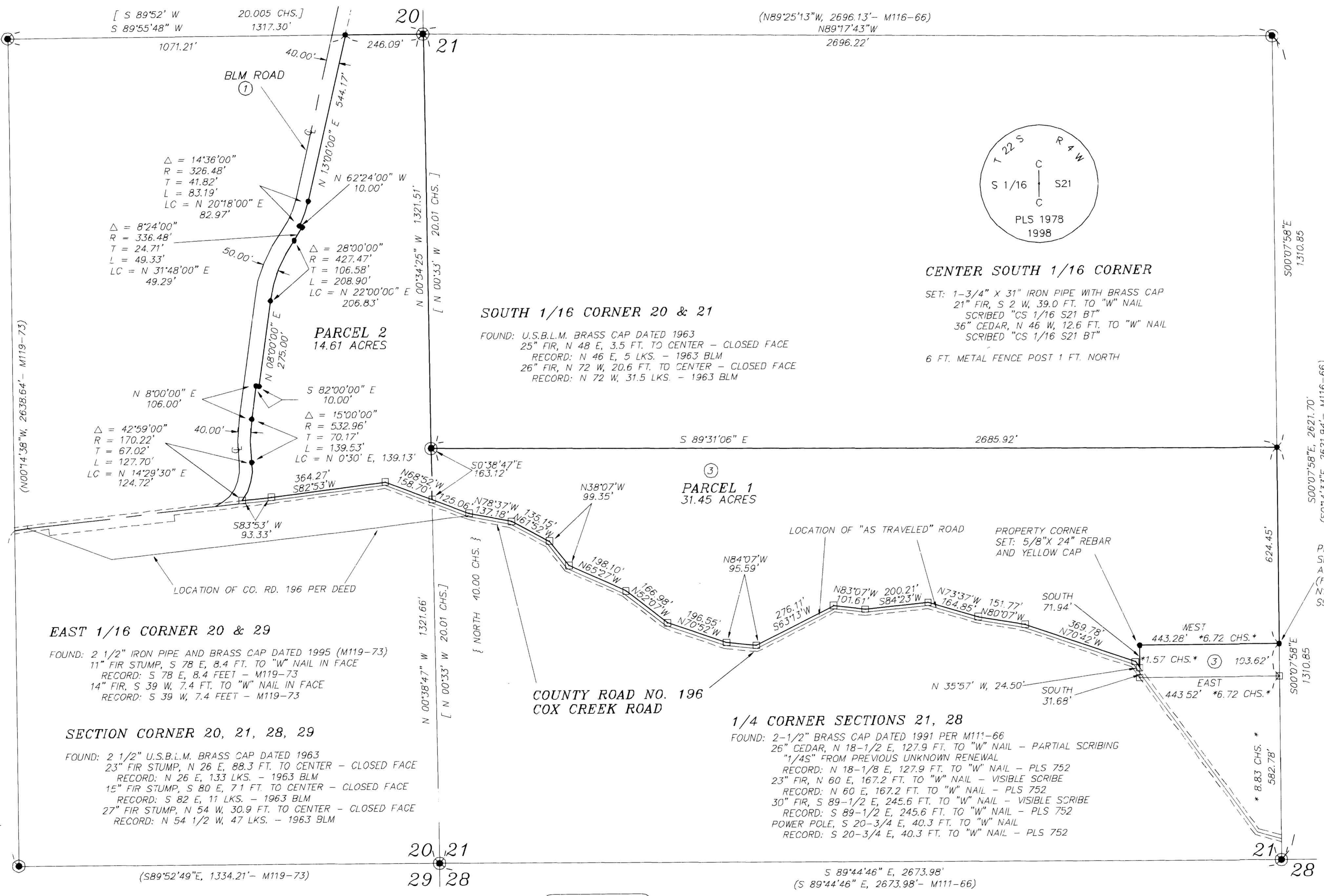
FOUND: U.S.B.L.M. BRASS CAP DATED 1963
 24" FIR, N 50-3/4 E, 60.5 FT. - CLOSED FACE
 RECORD: N 50-3/4 E, 92 LKS. - 1963 BLM
 16" FIR, S 0-1/2 W, 24.2 FT. - CLOSED FACE
 RECORD: S 0-1/4 W, 37 LKS. - 1963 BLM

1/4 CORNER SECTION 20 & 21

FOUND: DOUGLAS COUNTY BRASS CAP DATED 1961
 19" ALDER, S 8 E, 7.8 FT. TO CENTER - CLOSED FACE
 RECORD: S 6'16" E, 7.9' - M116-66
 28" CEDAR, N 88-1/2 E, 35.0 FT. TO CENTER - CLOSED FACE
 RECORD: S 88 E, 53 LKS. - 1963 BLM
 22" CEDAR, S 27-1/2 W, 28.6 FT. TO CENTER - CLOSED FACE
 RECORD: S 27 W, 44 LKS. - 1963 BLM
 RECORD: S 27 W, 28.0 FT. TO "W" NAIL - 1962 WEYERHAEUSER
 21" CEDAR, N 56 W, 20.9 FT. TO CENTER - CLOSED FACE
 RECORD: N 57 W, 21.4 FT. TO CENTER - 1961 DOUGLAS COUNTY

CENTER 1/4 CORNER

FOUND: 2-1/2" BRASS CAP DATED 1993 PER M116-66
 10" FIR, N 46 E, 32.4 FT. TO CENTER - CLOSED FACE
 RECORD: N 45-1/2 E, 32.4 FT. TO CENTER - PLS 811
 7" FIR, N 2 W, 24.9 FT. TO CENTER - CLOSED FACE
 RECORD: N 2 W, 24.9 FT. TO CENTER - PLS 811



CENTER SOUTH 1/16 CORNER

SET: 1-3/4" X 31" IRON PIPE WITH BRASS CAP
 21" FIR, S 2 W, 39.0 FT. TO "W" NAIL
 SCRIBED "CS 1/16 S21 BT"
 36" CEDAR, N 46 W, 12.6 FT. TO "W" NAIL
 SCRIBED "CS 1/16 S21 BT"
 6 FT. METAL FENCE POST 1 FT. NORTH

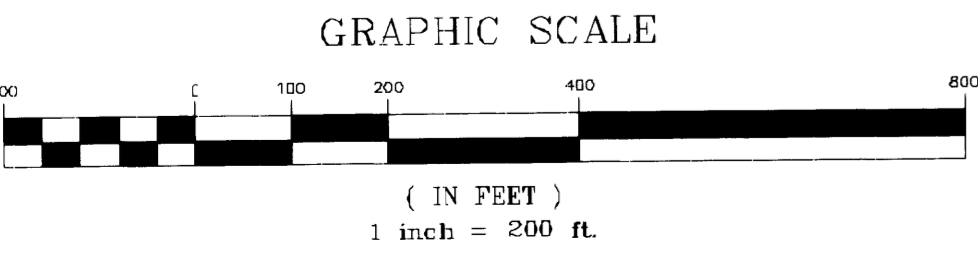
- NARRATIVE -

THIS SURVEY WAS MADE IN JANUARY AND FEBRUARY, 1998 AND MARCH, 2002 BY DANIEL W. BAKER OF BAKER AND ASSOCIATES SURVEYORS, INC. FOR WEYERHAEUSER COMPANY. THE PURPOSE OF THIS SURVEY WAS TO MONUMENT THE CORNERS OF A PORTION OF THE PROPERTY OWNED BY WEYERHAEUSER COMPANY IN SECTIONS 20 AND 21, TOWNSHIP 22 SOUTH, RANGE 4 WEST, WILLAMETTE MERIDIAN, AS DESCRIBED IN A WARRANTY DEED RECORDED JUNE 12, 1969, RECEPTION NO. 69-6454, DOUGLAS COUNTY, OREGON OFFICIAL RECORDS. THE BASIS OF BEARING FOR THIS SURVEY WAS THE WEST 1/2 OF THE SOUTH LINE OF SECTION 21 PER M111-66, WHICH WAS MADE BY THIS COMPANY IN 1991. A SERIES OF CLOSED TRAVERSES WERE RUN BETWEEN FOUND CORNERS FOR CONTROL WITH THE MINIMUM ERROR OF CLOSURE OF 1" IN 10,000'. THE CONTROLLING CORNERS USED IN THE SOUTHWEST 1/4 OF SECTION 21 WERE THE CENTER 1/4 CORNER SET IN M116-66, THE SOUTH 1/4 CORNER SET IN M111-66, THE SOUTHWEST SECTION CORNER AND SOUTH 1/16 CORNER ESTABLISHED IN A 1963 BLM SURVEY AND THE EAST 1/16 CORNER ESTABLISHED IN A 1963 BLM SURVEY AND THE WEST 1/4 CORNER PERPETUATED WITH A DOUGLAS COUNTY BRASS CAP SET IN 1961. THE CONTROLLING CORNERS USED IN SECTION 20 WERE THE WEST 1/4 CORNER AND SOUTHWEST SECTION CORNER OF SECTION 20, AS MENTIONED, THE CENTER-EAST 1/16 CORNER ESTABLISHED IN THE 1963 BLM SURVEY AND THE EAST 1/16 CORNER ON THE SOUTH LINE AS ESTABLISHED IN M119-73. THE SOUTHWEST 1/4 OF SECTION 21, ON THE NORTHERLY SIDE OF COUNTY ROAD NO. 196 (COX CREEK ROAD) WAS ESTABLISHED FROM AN EXCEPTION IN WEYERHAEUSER COMPANY DEED, VOLUME 428, PAGE 469, DOUGLAS COUNTY, OREGON OFFICIAL RECORDS. THE REMAINDER OF THE PROPERTY WAS ESTABLISHED BY THE SAME DEED, WITH THE WESTERLY BOUNDARY OF THE PROPERTY IN SECTION 20 BEING THE BLM ROAD AS ESTABLISHED IN VOLUME 316, PAGE 339, DOUGLAS COUNTY, OREGON OFFICIAL RECORDS AND THE EASTERLY MARGIN WAS MONUMENTED. THE TRUE PROPERTY LINES WERE BLAZED ON BOTH SIDES OF THE TRUE LINE, BLAZES WERE NOTCHED AND PAINTED RED, AND CORNERS SET WERE MONUMENTED WITH 5/8" X 24" REBARS WITH A YELLOW PLASTIC CAP, MARKED "D.W. BAKER PLS 1978", UNLESS SHOWN. THE SOUTHERLY BOUNDARY OF THE WEYERHAEUSER COMPANY PROPERTY IS THE NORTHERLY MARGIN OF COUNTY ROAD NO. 196 (COX CREEK ROAD) AS DESCRIBED IN A BARGAIN AND SALE DEED FROM JAMES AND GUSSIE COX TO DOUGLAS COUNTY. WE ADJUSTED THE DESCRIBED CENTERLINE FROM THE DEED TO DOUGLAS COUNTY TO FIT THE CALLS TO THE NORTH-SOUTH CENTERLINE OF SECTION 21, ON THE NORTHERLY SIDE OF COUNTY ROAD NO. 196 (COX CREEK ROAD) AS DESCRIBED IN VOLUME 316, PAGE 339, DOUGLAS COUNTY, OREGON OFFICIAL RECORDS. WE FIGURED THAT THE SECOND, THIRD AND FOURTH COURSES OF THE ROAD DESCRIPTION WERE IN THE WRONG ORDER, THE THIRD AND FOURTH COURSES SHOULD BE SECOND AND THIRD AND THE SECOND COURSE SHOULD BE THE FOURTH COURSE. THIS FITS THE EXISTING CONDITIONS VERY CLOSELY. NO MONUMENTS WERE SET ALONG THE NORTHERLY MARGIN OF COUNTY ROAD NO. 196 (COX CREEK ROAD).

BASIS OF BEARING: WEST 1/2 OF SOUTH LINE OF SECTION 21 PER M111-66

LEGEND

- - CORNERS FOUND (AS NOTED)
- - CORNERS SET - 5/8" X 24" REBAR WITH YELLOW PLASTIC CAP MARKED "D.W. BAKER PLS 1978" OR AS NOTED
- - CALCULATED POINT (NOT SET)
- - PROPERTY LINE
- { } - RECORD DATA - 1855 GLO
- [] - RECORD DATA - 1963 BLM
- () - RECORD DATA - AS NOTED
- * * - DEED REFERENCE - VOLUME 428, PAGE 469 DOUGLAS COUNTY, OREGON DEED RECORDS
- ① - BLM ROAD, VOLUME 316, PAGE 339 - D.C.O.D.R.
- ③ - WEYERHAEUSER COMPANY DEED, VOLUME 428, PAGE 469, D.C.O.D.R.
- D.C.O.D.R. - DOUGLAS COUNTY, OREGON DEED RECORDS



REGISTERED PROFESSIONAL LAND SURVEYOR
 DANIEL W. BAKER
 1978
 EXPIRES 12/31/03

I CERTIFY THAT THIS MAP WAS PREPARED USING A HP51640A INK CARTRIDGE ON CONTINENTAL JPC4M2 POLYESTER FILM

MAP NO. 22-04-20 TAX LOT 500
 MAP NO. 22-04-21 TAX LOTS 300 & 400

SURVEY IN SE 1/4 OF SECTION 20 AND SW 1/4 OF SECTION 21, T22S, R4W, W.M. DOUGLAS COUNTY, OREGON

CLIENT: **WEYERHAEUSER COMPANY**

DRAWN BY: **DWB** BAKER AND ASSOCIATES, SURVEYORS
 DATE: **2/04/02**
 FILE: **220421-COX-CK** 1385 OAK STREET - SUITE 3
 EUGENE, OREGON (541) 343-7243