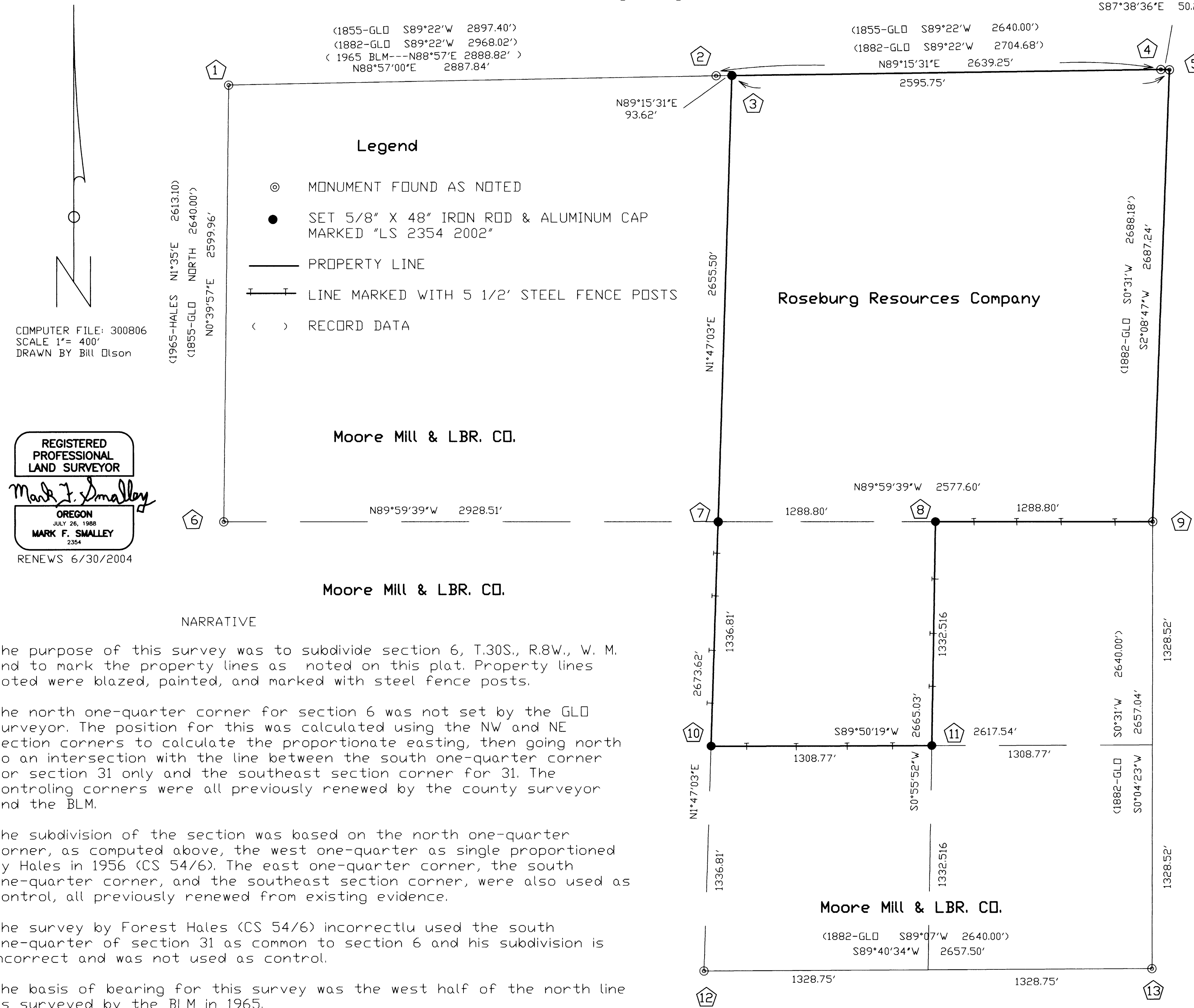


RESURVEY & SUBDIVISION IN DOUGLAS COUNTY SEC.6, T30S, R8W

FDR Roseburg Resources Co
and Moore Mill
August 2002

BY Mark F. Smalley
Roseburg Forest Products
P.O. Box 1088
Roseburg, Oregon



NARRATIVE

The purpose of this survey was to subdivide section 6, T.30S., R.8W., W. M. and to mark the property lines as noted on this plat. Property lines noted were blazed, painted, and marked with steel fence posts.

The north one-quarter corner for section 6 was not set by the GLD surveyor. The position for this was calculated using the NW and NE section corners to calculate the proportionate easting, then going north to an intersection with the line between the south one-quarter corner for section 31 only and the southeast section corner for 31. The controlling corners were all previously renewed by the county surveyor and the BLM.

The subdivision of the section was based on the north one-quarter corner, as computed above, the west one-quarter as single proportioned by Hales in 1956 (CS 54/6). The east one-quarter corner, the south one-quarter corner, and the southeast section corner, were also used as control, all previously renewed from existing evidence.

The survey by Forest Hales (CS 54/6) incorrectly used the south one-quarter of section 31 as common to section 6 and his subdivision is incorrect and was not used as control.

The basis of bearing for this survey was the west half of the north line as surveyed by the BLM in 1965.

This survey was performed using trimble GPS and a Leica TC805 total station in July 2002.

- Section corner S36|S31
BTs: For 50' pine corner tree
40" Sugar Pine stump N80°E 3.3' (DBT)
33" Fir S88°W 19.3' Partial scribe visible (DBT) (record S88°W 18.5')
Fir stump N50°W 49.2' Rotten (DBT) (Record N50°W 48.2')
BDs: 1965 BLM, Reference monument, brass cap on an iron pipe S35°E 12.21'
1958 Douglas County Surveyors brass cap on an iron pipe NORTH 10.00'
BTs: For witness corner
40" Pine stump S25°E 10.0' Scribe visible (NE bt for true corner)
37" Fir N60°W 33.0' Healed (Record N57°E 32.6')
24" Fir S49 1/2°W 27.5' Healed
32" W Fir N73°E 33.4' Healed
- One-quarter corner S31 only
Found: 1965 BLM brass cap on an iron pipe and 1958 Douglas County Surveyors brass cap on an iron pipe buried inverted
BTs:
30" W Fir N64°W 41.4' (Record N66°W 40.3')
Scribed:
6" Fir N27°W 6.5' "1/4 BT"
7" Fir N59°E 14.9' "1/4 BT"
7" Fir N13°W 13.9' "1/4 BT"
- One-quarter corner S6 only
Set: Aluminum cap on a 5/8"x48" iron rod
Marked "LS 2354 2002"
Scribed BTs:
7" Fir S70°W 23.8' "1/4 BT"
8" W Fir N87°W 12.9' "1/4 BT"
10" W Fir N58°E 13.3' "1/4 BT"
10" W Fir N20°E 9.6' "1/4 BT"
- Section corner S31|S32 only
Found: 1965 BLM brass cap on an iron pipe
BTs:
8" Fir N54°E 28.0' Healed
10" Fir N25 1/2°W 68.6' Healed
Scribed:
6" Hemlock S75 1/2°W 19.9' "S6 BT"
7" Hemlock S24°W 21.6' "S6 BT"
- Section corner S6|S5 only
Found: 1965 BLM brass cap on an iron pipe
BTs:
11" Cedar S9°W 43.2' Healed
30" Fir S64 1/2°E 43.6' Healed
Scribed:
8" Fir N48°W 5.8' "S32 BT"
8" Fir N13°E 10.5' "S32 BT"
- One-quarter corner S1|S6
Found: 3/4" iron pipe (Hales, CS54/6)
BTs:
19" Fir N62°E 3.3' Healed (Record N68°E 3.2')
17" Fir West 9.1' Healed (Record West 9.7')
SCRIBED:
12" W Fir N8°E 10.9' "1/4 S6 BT"
6" Fir S48°W 17.2' "1/4 S1 BT"
- Center-quarter corner
Set: Aluminum cap on a 5/8"x48" iron rod
Marked "LS 2354 2002"
Scribed BTs:
15" W Fir S20°W 16.6' "C1/4 BT"
8" Hemlock N54°W 13.2' "C1/4 BT"
10" Hemlock N2°W 19.7' "C1/4 BT"
18" Hemlock S72°E 18.1' "C1/4 BT"
- Center-east one-sixteenth corner
Set: Aluminum cap on a 5/8"x48" iron rod
Marked "LS 2354 2002"
Scribed BTs:
18" W Fir S9°E 15.8' "CE1/16 BT"
9" W Fir S42°W 35.1' "CE1/16 BT"
- One-quarter corner S6|S5
Found: 1965 Douglas County Surveyors brass cap on an iron pipe
BTs:
14" W Fir N74°W 11.0' Healed (Record N72°W 10.0')
10" W Fir S72°E 21.0' Healed (Record S67°E 20.3')
Scribed:
13" Chinquapin N53°E 20.0' "1/4 BT"
9" W Fir S19 1/2°W 8.7' "1/4 BT"
- Center-south one-sixteenth corner
Set: Aluminum cap on a 5/8"x48" iron rod
Marked "LS 2354 2002"
Scribed BTs:
28" Fir S89°E 38.2' "CS1/16 BT"
23" Fir N62°W 41.6' "CS1/16 BT"
- South-east one-sixteenth corner
Set: Aluminum cap on a 5/8"x48" iron rod
Marked "LS 2354 2002"
Scribed BTs:
26" Fir N76°E 3.7' "CE1/16 BT"
26" Fir S30°E 14.6' "CE1/16 BT"
- One-quarter corner S6
Found: 1965 Douglas County Surveyors brass cap on an iron pipe
BTs:
84" Stump S46°W 12.3' (DBT)
60" Stump N38°E 27.3' (DBT)
24" Stump S4°E 12.2' Healed
26" Fir N45°W 3.4' Healed
Scribed:
40" W Fir S12°W 44.9' "1/4S BT"
15" W Fir N71°E 13.7' "1/4S BT"
12" W Fir S78°E 56.8' "1/4S BT"
- Section corner S6|S5
Found: 1965 Douglas County Surveyors brass cap on an iron pipe
BTs:
10" Chinquapin N54°E 8.4' Healed (Record N54°E 8.6')
8" W Fir S18°E 12.9' Healed (Record S18 1/4°E 13.2')
10" W Fir S82°W 5.8' Healed (Record S81 1/2°W 5.6')
10" Fir N45°W 4.7' Scribing visible (Record N45 1/2°W 4.0')