

RECORD OF SURVEY

LOCATED IN
SECTION 18, T25S, R7W, W.M.
DOUGLAS COUNTY, OREGON

FILED
Date: 8/5/2002 By: [Signature]
This survey consists of:
Map: M137-49
Narrative:
Corner Rpt:

DOUGLAS COUNTY
SURVEYOR

REGISTERED
PROFESSIONAL
LAND SURVEYOR
[Signature]
OREGON
JULY 17, 1981
KRISTIAN O. DEGROOT
1941

RENEWAL DATE: 12-31-03

NARRATIVE:

THE PURPOSE OF THIS SURVEY WAS TO SUBDIVIDE SECTION 18, MONUMENT THE CW 1/16 CORNER AND TO POST, BLAZE, PAINT AND FLAG THE SECTION LINES AS SHOWN ON THE FACE OF THE MAP. CONTROLLING CORNERS 1, 8, 9 AND 12 WERE FOUND AS RESTORED IN THEIR ORIGINAL POSITION AS NOTED BELOW. CONTROLLING CORNERS 2, 3, 4, 5, 6, 10, 11 AND 13 WERE FOUND AS ESTABLISHED OR RESTORED BY PROPORTIONATE MEASUREMENT UNDER A 1964 USBLM DEPENDENT RESURVEY OF THE NORTH, SOUTH AND WEST LINES OF SECTION 18. BY AGREEMENT, NEW BEARING TREES AT CORNERS 2, 8, 9, 10 AND 12, WHICH WERE SCRIBED BY MARK SMALLEY, PLS 2354, OF ROSEBURG RESOURCES ARE BEING ENTERED INTO THE DOUGLAS COUNTY SURVEYORS RECORDS BY THIS SURVEY, IN LIEU OF SEPARATE CORNER REPORTS BEING FILED BY SMALLEY ON THESE CORNERS.

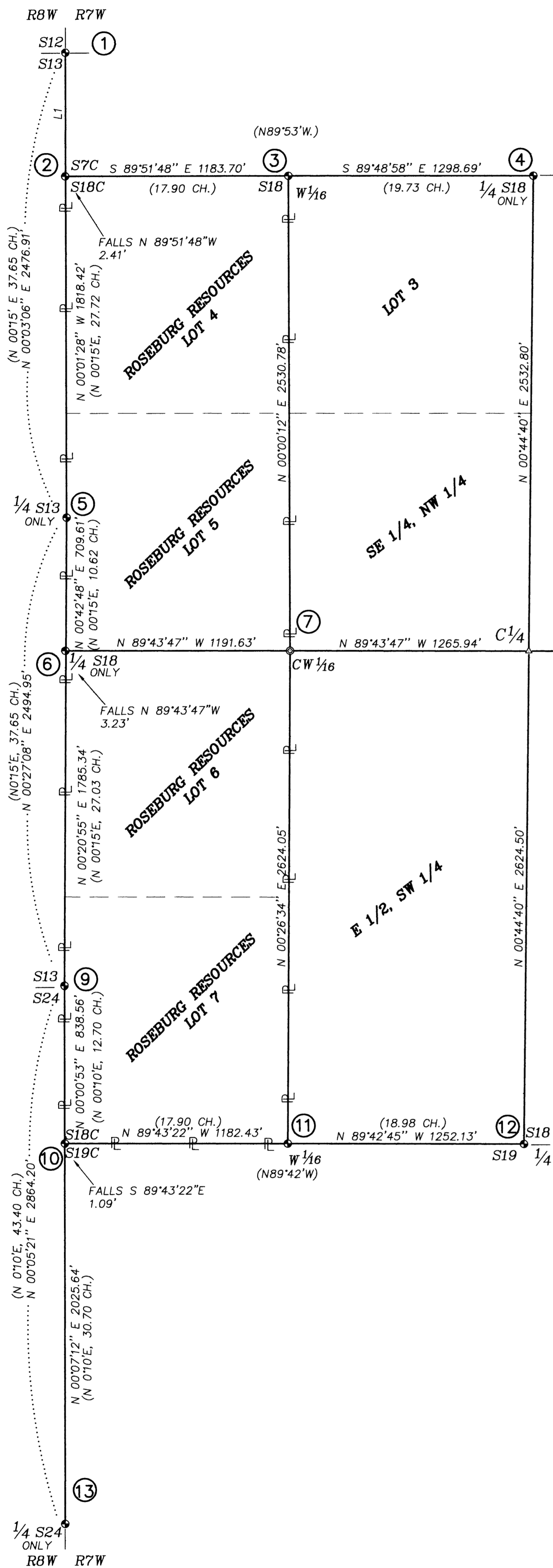
A GPS CONTROL SURVEY WAS COMPLETED AND RANDOM TRAVERSE LOOPS WERE SURVEYED BETWEEN THE CONTROLLING CORNERS, GPS POINTS, AND ALONG THE LINES POSTED USING THESE CORNER POSITIONS. SECTION 18 WAS SUBDIVIDED AS PER THE MANUAL OF SURVEYING INSTRUCTIONS, 1973 AND THE LAWS OF THE STATE OF OREGON.

THIS SURVEY WAS PERFORMED BY KRIS DEGROOT, LES FANNING, MICKEY CALVERT AND MATT DIXON USING LEICA SR299 GPS RECEIVER AND A NIKON DMT 531 TOTAL STATION WITH COMPUTATIONS BY KRIS DEGROOT AND DRAFTING BY BILL WARREN.

CORNER DESCRIPTIONS:

ALL NEW BEARING TREES HAVE DOUBLE BLAZED FACES WITH A BRASS WASHER STAMPED "PLS 1941" NAILED INTO THE LOWER BLAZE. BEARINGS ARE TAKEN TO THE CENTER OF THE TREE AT THE ROOT CROWN AND DISTANCES ARE MEASURED TO A NAIL IN THE ROOT CROWN AT THE SIDE AND CENTER OF THE TREE. ALL BEARING TREES HAVE A 6" RED BAND PAINTED AROUND THE TREE AND THE BLAZED FACE PAINTED RED AND BEARING TREE SIGNS NAILED TO THE TREE.

NUMBER DIRECTION DISTANCE
L1 N 00°15'42" E 658.49'
(N 00°15' E 9.93 CH.)



S12/S13
① FOUND A 1962 DCSO BCIP, FIRMLY SET, PROJECTING 6" ABOVE THE GROUND, STAMPED:
COUNTY SURVEYORS OFFICE
T 25S R8W
S12
S13
1962

FROM WHICH ORIGINAL BEARING TREES:
A ROOT HOLE BEARS S.85°E, 17.8 FT. WITH AN UPROOTED 28" D. FIR ALONG SIDE.
A ROOT HOLE BEARS S.85°W, 10.6 FT. WITH AN UPROOTED 48" D. FIR STUMP ALONG SIDE.
AND BEARING TREES BY GODFREY IN 1962:
A 23" W. FIR BEARS S.58 1/2°W, 23.2 FT. WITH HEALED BLAZE. (REC. S.55°W, 23.2 FT.)
AND BEARING TREES BY JOHNSTONE IN 1983:
A 17" CEDAR BEARS S.67°E, 28.9 FT. SCRIBED "BT" VISIBLE ON PARTIALLY HEALED FACE. (REC. S.67°E, 28.2 FT.)

S7/S18 CLOSING CORNER
② FOUND A 1964 BLM BCIP, FIRMLY SET, PROJECTING 3" ABOVE THE GROUND, STAMPED:
T25S
R8W R7W
S7 S18
S13 S18 CC
1964

FROM WHICH BEARING TREES BY BECK AND JELLY IN 1964:
A 36" HIGH STUMPED D. FIR BEARS S.56°E, 33.5 FT. WITH SCRIBE MARKS "T25S, R7W S18 CC BT" VISIBLE. (REC. S.59°E, 33.7 FT.)
AND BEARING TREES BY SMALLEY IN 2001:
A 11" D. FIR BEARS N.82°E, 2.8 FT. SCRIBED "S18 BT" W/BRASS WASHER STAMPED "LS 2354"
A 16" W. FIR BEARS N.24 1/2°E, 11.9 FT. SCRIBED "S7 BT". W/BRASS WASHER STAMPED "LS 2354"
A 20" W. FIR BEARS N.59°W, 37.4 FT. SCRIBED "S7 BT". W/BRASS WASHER STAMPED "LS 2354"

W 1/16 S18
③ FOUND A 1964 BLM BCIP, FIRMLY SET, PROJECTING 3" ABOVE THE GROUND, STAMPED:
W 1/16 S18
1964

FROM WHICH BEARING TREES BY BECK AND JELLY IN 1964:
A ROOT HOLE BEARS S.73°E, 26.8 FT. WITH AN UPROOTED AND ROTTING 12" D. FIR ALONG SIDE. (REC. S.79 1/2°E, 28.4 FT.)
AND NEW BEARING TREES:
A 15" HEMLOCK BEARS S.46°W, 20.2 FT. SCRIBED "W1/16 S18 BT".
A 9" D. FIR BEARS S.74 1/4°E, 15.3 FT. SCRIBED "W1/16 S18 BT".

1/4, S18 ONLY
④ FOUND A 1964 BLM BCIP, FIRMLY SET, PROJECTING 3" ABOVE THE GROUND, STAMPED:
T25S R7W
1/4 S18
1964

FROM WHICH BEARING TREES BY BECK AND JELLY IN 1964:
A 12" CEDAR BEARS S.18 1/2°W, 18.2 FT. (REC. S.20°W, 29 LKS.) WITH A HEALED FACE.
A 19" HEMLOCK BEARS S.89 1/2°E, 43.0 FT. (REC. S.88 1/2°E, 43.9 FT.) WITH A HEALED FACE.

1/4, S13 ONLY
⑤ FOUND A 1964 BLM BCIP, FIRMLY SET, PROJECTING 12" ABOVE THE GROUND, STAMPED:
T25S R8W
1/4 S13
1964

FROM WHICH BEARING TREES BY SMALLEY IN 2001:
A 16" D. FIR BEARS N.32 1/2°W, 25.2 FT. SCRIBED "1/4 S BT W/BRASS WASHER STAMPED "LS2354"
A 10" D. FIR BEARS S.62 1/2°E, 26.3 FT. SCRIBED "1/4 S BT W/BRASS WASHER STAMPED "LS2354"
NOTE: THERE IS NO EVIDENCE OF 1964 BLM BEARING TREES.

1/4, S18 ONLY
⑥ FOUND A 1964 BLM BCIP, FIRMLY SET, PROJECTING 3" ABOVE GROUND, STAMPED:
T 25 S
R 7 W
1/4 S18
1964

FROM WHICH A BEARING TREE BY BECK AND JELLY IN 1964:
A 30" W. FIR BEARS S.49°E, 27.4 FT. WITH A HEALED FACE.
AND A NEW BEARING TREE:
A 26" D. FIR BEARS N.42°E, 39.8 FT. SCRIBED "1/4 S18 BT".

CW 1/16, S18
⑦ SET A 5/8" X 30" IRON ROD 27" IN GROUND, WITH A 2 1/2" ALUMINUM CAP STAMPED:
ROSEBURG RESOURCES
T25S R7W
W1/16
C W1/16
S18
2002
PLS 1941

FROM WHICH NEW BEARING TREES:
A 10" W. FIR BEARS S.20°E, 22.2 FT. SCRIBED "CW1/16 S18 BT".
A 9" D. FIR BEARS S.89°W, 28.0 FT. SCRIBED "CW1/16 S18 BT".

1/4, S18/S17
⑧ FOUND 1967 DCSO BCIP, FIRMLY SET, PROJECTING 9" ABOVE THE GROUND, STAMPED:
COUNTY SURVEYORS OFFICE
T 25S R7W
1/4 S18 S17
1967

FROM WHICH ORIGINAL BEARING TREES:
A 69" ROTTED D. FIR STUMP BEARS N.26 1/2°W, 41.0 FT. WITH HEALED BLAZE. (REC. N.29°W, 62 LKS.)
A ROOT HOLE BEARS N.48 1/2°E, 20.5 FT. (REC. N.43°E, 19.8 FT.)
AND A BEARING TREE BY TRACY IN 1967:
A 14" ROTTED D. FIR STUMP BEARS N.11 1/2°W, 22.5 FT. (REC. N.14°W.)
AND BEARING TREES BY SMALLEY IN 2001:
A 12" MADRONE BEARS N.45 1/2°E, 20.4 FT. SCRIBED "1/4 S BT", W/BRASS WASHER STAMPED "LS 2354"
A 12" D. FIR BEARS NORTH, 28.9 FT. SCRIBED "1/4 S BT", W/BRASS WASHER STAMPED "LS 2354"
A 9" MADRONE BEARS S.59°W, 13.1 FT. SCRIBED "1/4 S BT", W/BRASS WASHER STAMPED "LS 2354"
A 11" D. FIR BEARS S.15 1/2°E, 21.1 FT. SCRIBED "1/4 S BT", W/BRASS WASHER STAMPED "LS 2354"

S13/S24
⑨ FOUND A 1964 BLM BCIP, FIRMLY SET, PROJECTING 3" ABOVE GROUND, STAMPED:
T25S
R8W R7W
S13 S18
S24 S18
1964

FROM WHICH ORIGINAL BEARING TREES:
A ROOT HOLE BEARS N.88°E, 10.3 FT. WITH AN UPROOTED, ROTTED 14" D. FIR ALONG SIDE. (REC. S.82°E, 19 LKS.)
A 16" W. FIR SNAG BEARS N.83 1/4°W, 21.4 FT. NO VISIBLE MARKS. (REC. N.85°W, 33 LKS.)
AND BEARING TREES BY BECK AND JELLY IN 1964:
A 45" FIR STUMP BEARS S.74 1/4°W, 31.9 FT. NO VISIBLE MARKS. (REC. S.75°W, 50 1/2 LKS.)
A ROOT HOLE BEARS N.25 3/4°W, 33.2 FT. WITH AN UPROOTED 45" D. FIR ALONG SIDE. (REC. N.35°W, 50 LKS.)
AND BEARING TREES BY SMALLEY IN 2001:
A 10" D. FIR BEARS S.47°W, 18.0 FT. SCRIBED "S13 BT", WITH BRASS WASHER STAMPED "LS 2354".
A 10" D. FIR BEARS N.76°W, 17.5 FT. SCRIBED "S13 BT", WITH BRASS WASHER STAMPED "LS 2354".

S18/S19 CLOSING CORNER
⑩ FOUND A 1964 BLM BCIP, FIRMLY SET, PROJECTING 3" ABOVE THE GROUND, STAMPED:
T25S
R8W R7W
S18 S19
S24 S19 CC
1964

FROM WHICH BEARING TREES BY BECK AND JELLY IN 1964:
A 23" CEDAR BEARS N.41 1/2°E, 90.4 FT. WITH A HEALED BLAZE. (REC. N.39 1/2°E.)
A 20" W. FIR BEARS S.32°E, 42.4 FT. WITH A HEALED BLAZE. (REC. S.33 1/2°E, 65 LKS.)
AND A BEARING TREE BY SMALLEY IN 2001:
A 13" W. FIR BEARS N.63 1/2°E, 14.6 FT. SCRIBED "S18 BT". WITH A BRASS WASHER STAMPED "LS 2354".
NOTE: 1" IRON PIPE AT ORIGINAL CLOSING CORNER NOW MISSING.

W 1/16, S18/S19
⑪ FOUND A 1964 BLM BCIP, FIRMLY SET, PROJECTING 3" ABOVE THE GROUND, STAMPED:
T25S R7W
W1/16 S18
S19
1964

FROM WHICH BEARING TREES BY BECK AND JELLY IN 1964:
A 18" D. FIR BEARS N.73°E, 15.5 FT. WITH A HEALED FACE. (REC. 24 LKS.)
A 22" D. FIR BEARS S.53°E, 36.2 FT. WITH A HEALED FACE. (REC. 55 1/2 LKS.)

1/4 S18/S19
⑫ FOUND A 1964 BLM BCIP, FIRMLY SET, PROJECTING 3" ABOVE THE GROUND, STAMPED:
T25S R7W
S18 S19
1964

FROM WHICH AN ORIGINAL BEARING TREE:
24" D. FIR "HIGH STUMP" BEARS N.10°W, 18.1 FT. W/ A SCRIBE MARK "T" VISIBLE. (REC. N.13°W, 27 LKS.)
AND AN ORIGINAL BEARING TREE BY JELLY IN 1964:
A 10" ROTTED FIR STUMP BEARS S.11°W, 67.0 FT. (REC. S.10°W, 67.0 FT.)
AND BEARING TREES BY SMALLEY IN 2001:
A 9" D. FIR BEARS S.60°E, 4.3 FT. SCRIBED "1/4 S BT" W/BRASS WASHER STAMPED "LS 2354"
A 11" D. FIR BEARS S.49°W, 21.4 FT. SCRIBED "1/4 S BT" W/BRASS WASHER STAMPED "LS 2354"
8" D. FIR BEARS S.66°W, 12.9 FT. SCRIBED "1/4 S BT" W/BRASS WASHER STAMPED "LS 2354"
10" D. FIR BEARS N.52°W, 17.4 FT. SCRIBED "1/4 S BT" W/BRASS WASHER STAMPED "LS 2354"

1/4 S24 ONLY
⑬ FOUND A 1964 BLM BCIP, FIRMLY SET, PROJECTING 3" ABOVE THE GROUND, STAMPED:
T 25 S
R 8 W
1/4 S24
1964

FROM WHICH BEARING TREES BY BECK AND JELLY IN 1964:
A 9" HIGH STUMPED D. FIR BEARS S.47 1/2°W, 47.2 FT. WITH A HEALED BLAZE. (REC. S.44°W, 70 LKS.)
A 10" MADRONE BEARS N.34°W, 19.5 FT. WITH A HEALED FACE. (REC. N.41 1/2°W, 29 LKS.)
AND A NEW BEARING TREE:
A 15" MADRONE BEARS S.01°W, 39.4 FT. BARK SCRIBED "1/4 S24 BT"

GPS OBSERVATION

LEGEND:
● = SET 5/8" x 30" IRON ROD w/2 1/2" ALUMINUM CAP AS NOTED.
● = FOUND BCIP OR MONUMENT AS NOTED
△ = COMPUTED POINT
— = PROPERTY LINES POSTED WITH 6' STEEL POSTS, BLAZED, PAINTED AND FLAGGED.
() = RECORD PER 1964 USBLM DEPENDENT RESURVEY
BCIP = BRASS CAPPED IRON PIPE

B.T.S.

MAP FILE M137-49

MAP FILE M137-49