

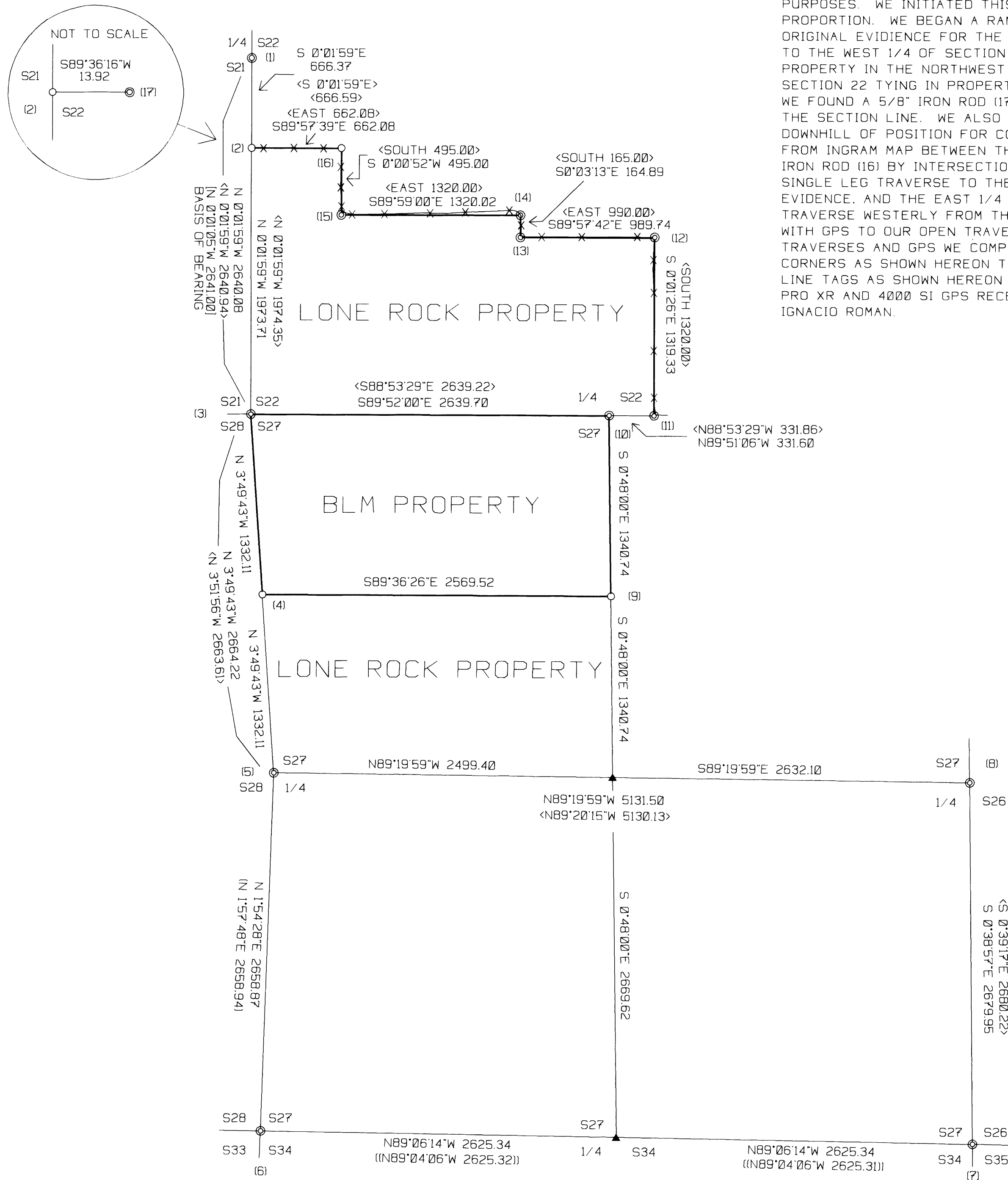
LONE ROCK TIMBER CO.

PO BOX 1127 ROSEBURG OREGON 97470 DATE: DEC. 2001
SECTION 22 & 27, TOWNSHIP 25 SOUTH, RANGE 5 WEST, W.M. DOUGLAS COUNTY, OREGON
LONE ROCK TIMBER TRACT: WAHL TRACT SCALE 1" = 600'

FILED
Date: 1-9-2002 By: JC
This survey consists of:
Map: M137-29
Narrative:
Corner Rpt:
DOUGLAS COUNTY
SURVEYOR

NARRATIVE

THIS SURVEY WAS CONDUCTED TO ESTABLISH PROPERTY CORNERS AND PROPERTY LINES FOR TIMBER CUTTING PURPOSES. WE INITIATED THIS SURVEY AT THE SOUTHWEST CORNER OF SECTION 27 A BRASS CAP SET BY PROPORTION. WE BEGAN A RANDOM TRAVERSE NORTHERLY TYING IN DOUGLAS COUNTY BRASS CAPS SET FROM ORIGINAL EVIDENCE FOR THE WEST 1/4 OF SECTION 27 AND THE NORTHWEST CORNER OF SECTION 27 CONTINUING TO THE WEST 1/4 OF SECTION 22 SET BY PROPORTION. WE THEN RAN CLOSED LOOP TRAVERSES AROUND THE BLM PROPERTY IN THE NORTHWEST 1/4 OF SECTION 27 AND THE LONE ROCK PROPERTY IN THE SOUTHWEST 1/4 OF SECTION 22 TYING IN PROPERTY CORNERS SET FOR THE NORTH BOUNDARY OF LONE ROCK'S PROPERTY BY INGRAM. WE FOUND A 5/8" IRON ROD (17) NEAR POSITION FOR CORNER (2) POSSIBLY MIS-SET OR MOVED TO 13.92 FEET WEST OF THE SECTION LINE. WE ALSO FOUND A 5/8" IRON ROD OUT OF THE GROUND IN THE BRUSH APPROXIMATELY 20 FEET DOWNHILL OF POSITION FOR CORNER (16). WE SET IRON ROD (2) ON THE SECTION LINE PROPORTIONATE DISTANCE FROM INGRAM MAP BETWEEN THE QUARTER CORNER AND SOUTHWEST CORNER OF SECTION 22. WE ALSO SET AN IRON ROD (16) BY INTERSECTION OF RECORD DISTANCES FROM INGRAMS MAP FROM CORNERS (2) AND (15). WE RAN A SINGLE LEG TRAVERSE TO THE SOUTHEAST CORNER OF SECTION 27 A DCSO BCIP SET FROM PERPETUATED ORIGINAL EVIDENCE, AND THE EAST 1/4 OF SECTION 27 A 5/8" IRON ROD SET BY INGRAM BY PROPORTION. WE THEN RAN A TRAVERSE WESTERLY FROM THE NORTHWEST CORNER OF SECTION 27 TO A CONTROL POINT WE WERE ABLE TO TIE WITH GPS TO OUR OPEN TRAVERSE TO THE SOUTHEAST CORNER OF SECTION 27. FROM OUR COMBINED SURVEY TRAVERSES AND GPS WE COMPUTED THE BREAKDOWN OF SECTION 27 TO SET THE CENTER NORTH AND NORTH 1/16 CORNERS AS SHOWN HEREON THE MAP. WE LASTLY MARKED PROPERTY LINES WITH BLAZING, PAINT, RIBBON AND LINE TAGS AS SHOWN HEREON THE MAP. THIS SURVEY WAS DONE WITH A NIKON DTM 450 TOTAL STATION, TRIMBLE PRO XR AND 4000 SI GPS RECEIVERS ASSISTING ME IN THIS SURVEY WERE GARY ANGIOLET, MARK DVORSCAK AND IGNACIO ROMAN.



CORNER INFORMATION

THE FOLLOWING IS A RECORD OF ALL CORNERS FOUND OR SET DURING THE COURSE OF THIS SURVEY.

- 1) THE 1/4 CORNER BETWEEN SECTIONS 21 AND 22
FOUND 1973 DOUGLAS COUNTY BRASS CAP WITH IRON ROD S30°W, 0.3 FEET.
-- 11' CEDAR BEARS S89 1/2°E, 7.4 FEET (RECORD N88°E, 7.5 FEET) VISIBLE SCRIBING
-- 13' DOUGLAS FIR BEARS N30 1/2°E, 13.9 FEET (RECORD N31°E, 14.5 FEET) WELL HEALED FACE AND TAG
-- 18' MADRONE BEARS N10 1/4°W, 8.9 FEET (RECORD N11°W, 8.5 FEET), VISIBLE SCRIBING
-- 20' DOUGLAS FIR BEARS S75 1/2°W, 37.5 FEET (RECORD S76°W, 38.4 FEET) WELL HEALED FACE AND TAG
CORNER LIES ON STEEP WEST SLOPE IN SECOND GROWTH TIMBER. A FENCE IS 0.6 FEET EAST FROM CORNER AND ANOTHER FENCE IS 17.2 FEET WEST FROM CORNER. BOTH FENCES RUN NORTH-SOUTH.
- 2) PROPERTY CORNER
SET 5/8" X 30" IRON ROD WITH YELLOW PLASTIC CAP MARKED LONE ROCK TIMBER PLS 2291.
-- 15' DOUGLAS FIR BEARS N40 1/4°W, 15.4 FEET. WE SCRIBE B.T. AND TAG TREE
-- 5/8" IRON ROD BEARS N89°36'16"W, 13.92 FEET.
CORNER LIES ON FLAT GROUND AT TOE OF STEEP NORTH SLOPE AND APPROXIMATELY 14 FEET WEST OF FENCE CORNER WHERE FENCE RUNS NORTH AND EAST.
- 3) THE NORTHWEST SECTION CORNER OF SECTION 27
FOUND 1995 DOUGLAS COUNTY BRASS CAP.
-- 19' MADRONE BEARS S62 1/2°W, 31.9 FEET (RECORD S62 1/2°W, 31.8 FEET) VISIBLE SCRIBING AND COUNTY TAG
-- 18' DOUGLAS FIR BEARS N28 3/4°W, 10.8 FEET (RECORD N27 1/2°W, 10.6 FEET) HEALED FACE AND COUNTY TAG
-- 6 1/2' DOUGLAS FIR BEARS N77 1/4°E, 23.4 FEET (RECORD N78°E, 23.8 FEET) VISIBLE SCRIBING AND COUNTY TAG
-- 4/8" IRON ROD BEARS S85 1/2°E, 7.18 FEET (RECORD S84°E, 7.23 FEET)
-- 5/8" IRON ROD BEARS N43 3/4°E, 7.59 FEET (RECORD N46°E, 7.73 FEET)
-- 5/8" IRON ROD BEARS N38°W, 5.17 FEET (RECORD N37°W, 5.14 FEET)
-- 5/8" IRON ROD BEARS S14°W, 5.74 FEET (RECORD S11°W, 5.80 FEET)
CORNER LIES AT SOUTHEAST CORNER OF APPROXIMATELY 10-YEAR OLD CLEARCUT. BLAZING AND PAINTING RUNS SOUTH AND EAST FROM CORNER.
- 4) THE NORTH 1/16 CORNER BETWEEN SECTIONS 27 AND 28
SET 5/8" X 40" IRON ROD WITH YELLOW PLASTIC CAP MARKED LONE ROCK TIMBER PLS 2291 0.6 FEET ABOVE GROUND IN MOUND OF STONES
-- 40' DOUGLAS FIR BEARS S36 1/4°W, 6.6 FEET. WE SCRIBE N1/16 S28 B.T. AND TAG TREE
-- 36' DOUGLAS FIR BEARS N48 1/2°E, 40.05 FEET. WE SCRIBE N1/16 S28 B.T. AND TAG TREE
CORNER LIES ON WEST EDGE OF FLAT DRAW BOTTOM AT TOE OF 60% SIDESLOPE WHICH FACES WEST.
- 5) THE 1/4 CORNER BETWEEN SECTIONS 27 AND 28
FOUND 1968 DOUGLAS COUNTY BRASS CAP.
-- 30' ROTTING FIR STUMP BEARS N33°W, 65.0 FEET (RECORD N34°W, 66.0 FEET) VISIBLE SCRIBING AND TAG
-- DID NOT LOOK FOR BEARING TREE RECORD S74°E, 112.9 FEET
CORNER LIES ON STEEP WEST SLOPE APPROXIMATELY 42.0 FEET WEST OF END OF ROAD LANDING.
- 6) THE SOUTHWEST SECTION CORNER OF SECTION 27
FOUND 1995 BRASS CAP SET IN BAKER SURVEY M19-74.
-- 13' DOUGLAS FIR STUMP BEARS S56 1/4°W, 23.4 FEET (RECORD S54°W, 23.4 FEET) B.T. AND TAG AND LARGE NAIL IN MIDDLE OF STUMP
-- 19' DOUGLAS FIR STUMP BEARS N58 1/4°W, 22.3 FEET (RECORD N61°W, 32.3 FEET) B.T. AND TAG AND LARGE NAIL IN MIDDLE OF STUMP
-- DOUGLAS FIR BEARS S10 1/4°E, 86.9 FEET (RECORD S11°E, 86.9 FEET) HEALED FACE AND TAG
-- 18' DOUGLAS FIR BEARS N80°E, 136.7 FEET (RECORD N83°E, 136.8 FEET) HEALED FACE AND TAG
CORNER LIES ON WEST SIDE OF SPUR RIDGE ON THE SOUTH SLOPE OF A GRAZED AREA
- 7) THE SOUTHEAST SECTION CORNER FOR SECTION 27
FOUND 1960 DOUGLAS COUNTY BRASS CAP 1.5 FEET ABOVE GROUND.
-- 27' DOUGLAS FIR BEARS S66°W, 73.5 FEET (AS PER RECORD)
-- 23' DOUGLAS FIR BEARS N23°W, 75.3 FEET (AS PER RECORD)
-- 22' DOUGLAS FIR BEARS N15°E, 46.1 FEET (AS PER RECORD)
CORNER LIES ON SOUTH FACING SLOPE IN OLD FENCE LINE APPROXIMATELY 100 FEET SOUTH OF OLD ROAD GRADE. FENCE RUNS NORTHERLY AND SOUTHERLY FROM CORNER.
- 8) THE 1/4 CORNER BETWEEN SECTIONS 26 AND 27
FOUND 5/8" IRON ROD 0.3 FEET ABOVE GROUND.
-- 18' DOUGLAS FIR BEARS S84°E, 49.7 FEET AS PER RECORD WITH COUNTY TAG AND SCRIBING VISIBLE
-- 18' MADRONE BEARS S36 3/4°E, 17.9 FEET (RECORD S36°E, 18.5 FEET) COUNTY TAG AND HEALED FACE
-- 18' DOUGLAS FIR BEARS N28 1/2°W, 11.7 FEET (RECORD N28°W, 11.8 FEET) COUNTY TAG AND VISIBLE SCRIBING
-- 17' DOUGLAS FIR BEARS S82 1/2°W, 21.8 FEET (RECORD S82°W, 22.0 FEET) COUNTY TAG AND HEALED FACE
- 9) THE CENTERNORTH 1/16 CORNER OF SECTION 27
SET 5/8" X 40" IRON ROD WITH YELLOW PLASTIC CAP MARKED LONE ROCK TIMBER PLS 2291 IN MOUND OF STONES 0.6 FEET ABOVE GROUND.
-- 10' CEDAR BEARS N11 1/2°E, 9.5 FEET. WE SCRIBE CN1/16 B.T. AND TAG TREE
-- 14' DOUGLAS FIR BEARS S43°E, 10.2 FEET. WE SCRIBE CN1/16 S27 B.T. AND TAG TREE
CORNER LIES ON 55% SOUTHEAST SLOPE APPROXIMATELY 60.0 FEET NORTH OF HEAD WALL OF STEEP DRAW THAT RUNS EAST.
- 10) THE 1/4 CORNER BETWEEN SECTIONS 22 AND 27
FOUND 1997 DOUGLAS COUNTY BRASS CAP IN LARGE MOUND OF STONES.
-- 12' DOUGLAS FIR BEARS N45 1/4°W, 15.5 FEET (RECORD N45°W, 15.8 FEET) WELL HEALED FACE AND TAG
-- 15' DOUGLAS FIR BEARS S33°W, 9.4 FEET (RECORD S32°W, 9.5 FEET) VISIBLE SCRIBING AND TAG
-- 26' DOUGLAS FIR BEARS S69 1/4°E, 21.7 FEET (RECORD S69°E, 21.4 FEET) VISIBLE SCRIBING AND TAG
-- 13' DOUGLAS FIR BEARS N33°E, 22.7 FEET (RECORD N31 1/2°E, 22.5 FEET) HEALED FACE AND TAG
CORNER LIES ON SOUTH SIDE OF SMALL DRAW AND APPROXIMATELY 210 FEET WEST OF MAIN DRAW.
- 11) PROPERTY CORNER
FOUND 5/8" IRON ROD 0.3 FEET ABOVE GROUND.
-- 14' DOUGLAS FIR BEARS N68 1/4°E, 13.8 FEET. WE SCRIBE B.T. AND TAG TREE
CORNER LIES ON SOUTH SIDE OF DRAW 70.0 FEET NORTH OF ROAD. FENCE LINE RUNS AROUND B.T. TREE.
- 12) PROPERTY CORNER
FOUND 5/8" IRON ROD 0.2 FEET ABOVE GROUND.
-- 9' DOUGLAS FIR BEARS N5 1/4°W, 16.0 FEET. WE SCRIBE B.T. AND TAG TREE
CORNER LIES ON NORTHEAST SLOPE NEAR FENCE CORNER.
- 13) PROPERTY CORNER
FOUND 5/8" IRON ROD 0.2 FEET ABOVE GROUND.
-- 11' DOUGLAS FIR BEARS N63°E, 20.1 FEET. WE SCRIBE B.T. AND TAG TREE
CORNER LIES ON NORTHEAST SLOPE. FENCE CORNER BEARS N18°E, 12.7 FEET
- 14) PROPERTY CORNER
FOUND 5/8" IRON ROD 0.2 FEET ABOVE GROUND.
-- 8' DOUGLAS FIR BEARS N14 1/4°E, 15.9 FEET. WE SCRIBE B.T. AND TAG TREE
CORNER LIES IN FENCE LINE THAT RUNS NORTH-SOUTH.
- 15) PROPERTY CORNER
FOUND 5/8" IRON ROD 0.2 FEET ABOVE GROUND.
-- 14' DOUGLAS FIR BEARS S63 1/2°E, 14.1 FEET. WE SCRIBE B.T. AND TAG TREE
CORNER LIES ON NORTHEAST SLOPE.
- 16) PROPERTY CORNER
SET 5/8" X 40" IRON ROD WITH YELLOW PLASTIC CAP MARKED LONE ROCK TIMBER PLS 2291 0.3 FEET ABOVE GROUND.
-- 15' DOUGLAS FIR BEARS S52 1/4°E, 8.0 FEET. WE SCRIBE B.T. AND TAG TREE
CORNER LIES ON NORTH SLOPE AT FENCE CORNER.
- 17) PROPERTY CORNER
FOUND 5/8" IRON ROD 13.92 FEET EAST OF SECTION LINE (MAY BE IRON ROD SET IN SURVEY RM 2-54) RM 2-54 SHOWS A 5/8" IRON ROD SET ON SECTION LINE 666.59 FEET SOUTH OF WEST QUARTER CORNER OF SECTION 22. THERE WERE NO REFERENCE MONUMENTS FOR THIS CORNER SO THE FOUND IRON ROD MAY HAVE BEEN MOVED OR MIS-SET INITIALLY.

LEGEND

- - FOUND MONUMENT
- - SET 5/8" BY 40" IRON ROD WITH 2 1/2" ALUMINUM CAP
- ▲ - COMPUTED NOT SET
- - PROJECTED LINES
- - PROPERTY LINES FLAGGED, BLAZED, AND PAINTED
- () - BAKER 1995 SURVEY M 119-74 FILED IN DOUGLAS COUNTY SURVEYORS OFFICE (ISTATE PLANE GRID CONVERTED TO GROUND)
- || - BAKER 1995 SURVEY M 119-76 FILED IN DOUGLAS COUNTY SURVEYORS OFFICE (ISTATE PLANE GRID CONVERTED TO GROUND)
- < > - INGRAM 1973 SURVEY RM 2-54 FILED IN DOUGLAS COUNTY SURVEYORS OFFICE
- | | - ROGER 1973 SURVEY CS 55/289 FILED IN DOUGLAS COUNTY SURVEYORS OFFICE

REGISTERED PROFESSIONAL LAND SURVEYOR
Ken W. Hoffine
OREGON JULY 16, 1989
KEN W. HOFFINE 228
EXPIRES 6-30-03

