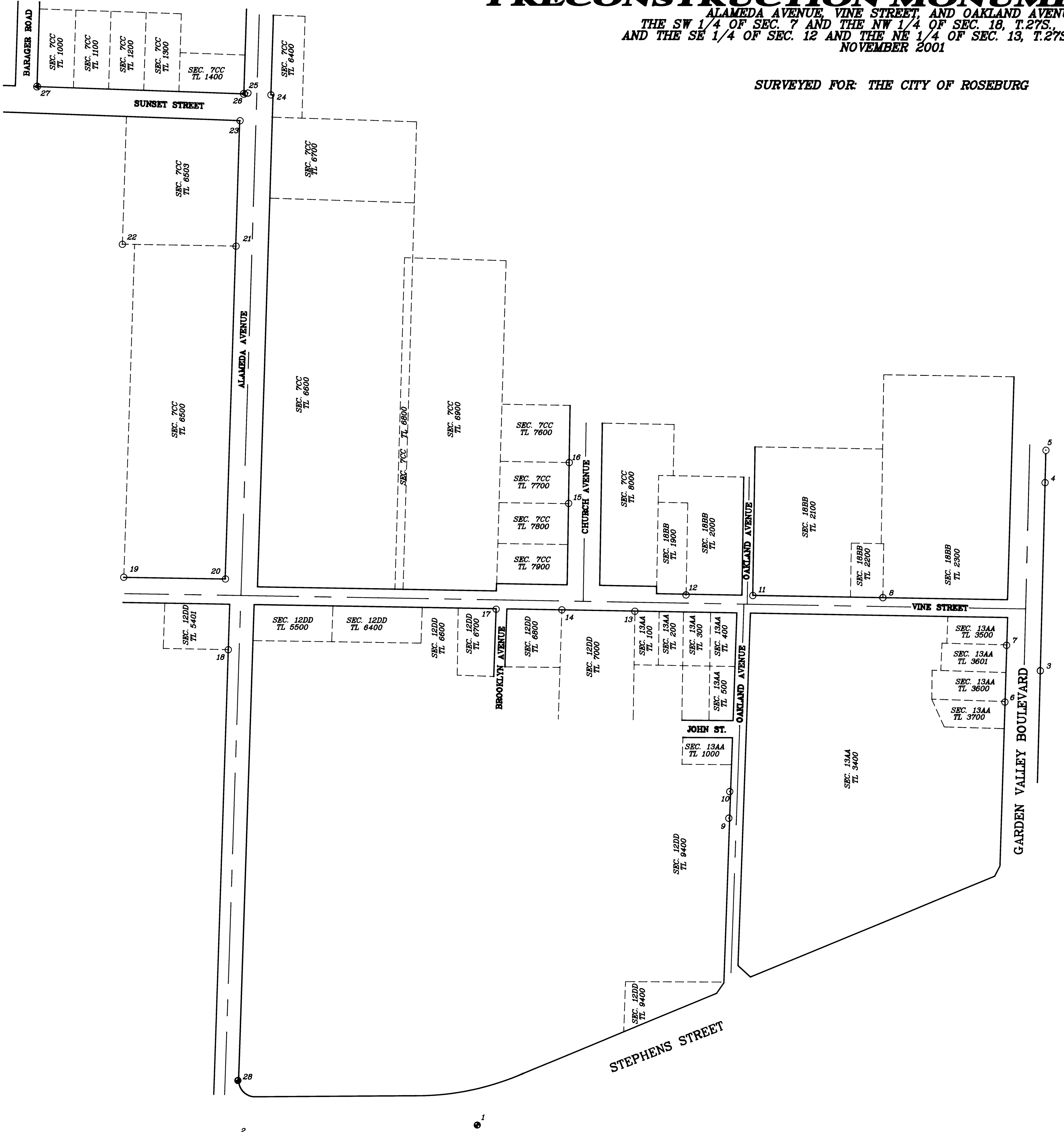


PRECONSTRUCTION MONUMENT LOCATE

ALAMEDA AVENUE, VINE STREET, AND OAKLAND AVENUE
 THE SW 1/4 OF SEC. 7 AND THE NW 1/4 OF SEC. 18, T.27S., R.05W., W.M.
 AND THE SE 1/4 OF SEC. 12 AND THE NE 1/4 OF SEC. 13, T.27S., R.08W., W.M.
 NOVEMBER 2001

SURVEYED FOR: THE CITY OF ROSEBURG

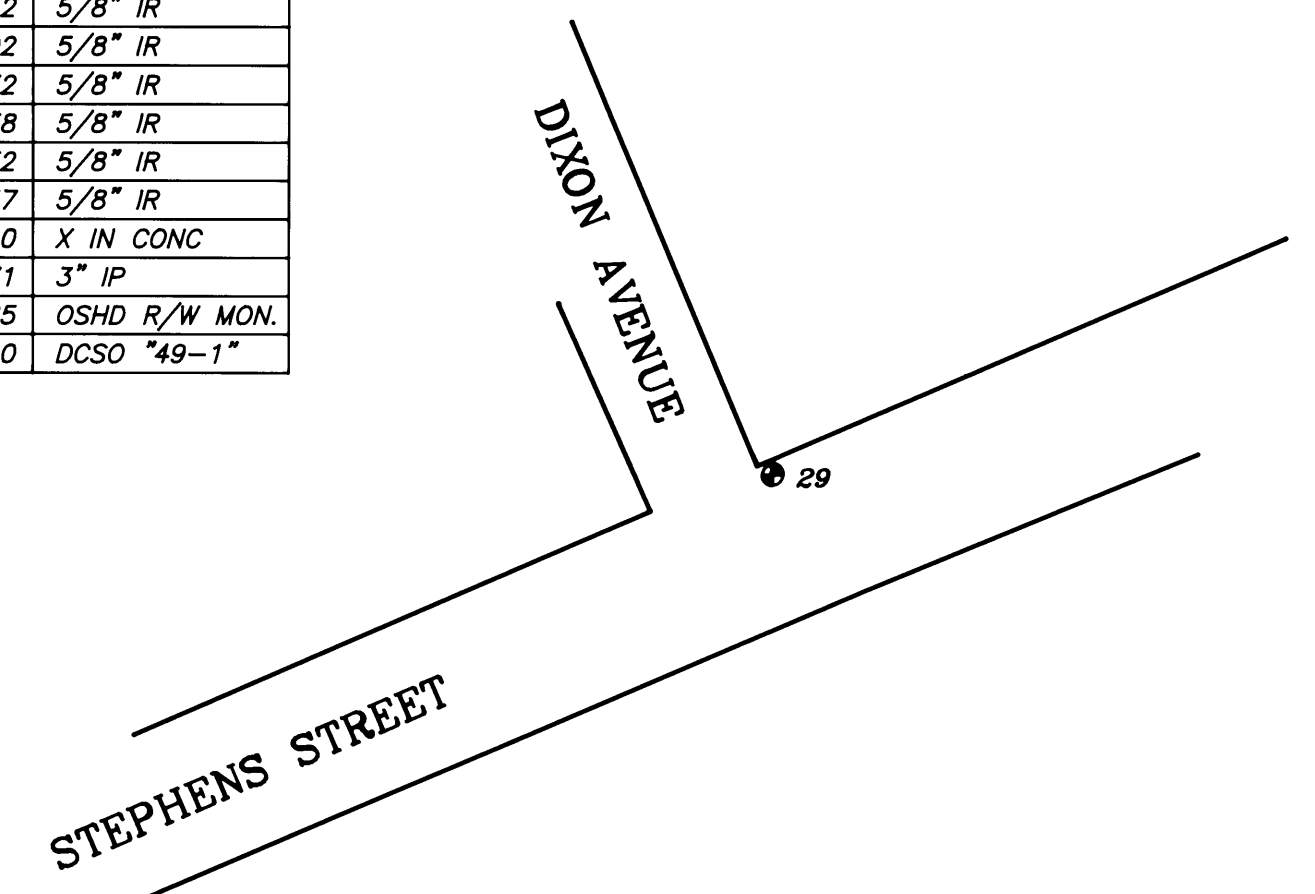
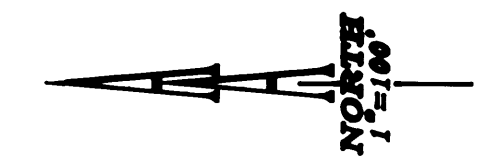
FILED
 Date: 12/13/2001 By: [Signature]
 This survey consists of
 Map: M137-28
 Narrative:
 Corner Rpt:
 DOUGLAS COUNTY
 SURVEYOR



NO.	NORTHING	EASTING	DESCRIPTION
1	582493.66	1240722.92	DCSO "MAZDA"
2	582936.39	1240693.77	DCSO "FORD"
3	581455.68	1241566.65	5/8" IR
4	581447.56	1241914.63	5/8" IR
5	581446.08	1241974.70	5/8" IR
6	581521.19	1241508.81	5/8" IR
7	581518.32	1241613.57	5/8" IR
8	581747.03	1241701.36	5/8" IR
9	582031.09	1241291.78	5/8" IR
10	582029.48	1241341.20	5/8" IR
11	581987.64	1241704.62	5/8" IR
12	582111.04	1241705.33	5/8" IR
13	582205.58	1241674.79	5/8" IR
14	582340.31	1241676.95	5/8" IR
15	582328.28	1241873.79	5/8" IR
16	582327.17	1241949.57	5/8" IR
17	582461.49	1241677.82	5/8" IR
18	582956.02	1241601.20	5/8" IR
19	583149.17	1241735.45	5/8" IR
20	582961.43	1241732.52	5/8" IR
21	582942.82	1242349.02	5/8" IR
22	583152.73	1242352.32	5/8" IR
23	582935.73	1242581.38	5/8" IR
24	582878.69	1242629.32	5/8" IR
25	582921.22	1242632.57	5/8" IR
26	582928.63	1242631.20	X IN CONC
27	583310.60	1242644.71	3" IP
28	582936.16	1240803.65	OSHD R/W MON.
29	580432.19	1241643.10	DCSO "49-1"

LEGEND:
 ○ FOUND MONUMENT (DESCRIPTION IN COORDINATE LIST)
 ● CONTROL MONUMENT
 TAX LOT LINES SHOWN ARE APPROXIMATE

NARRATIVE:
 The purpose of this survey is to show the existing monuments found prior to construction.
 The BASIS OF BEARINGS was established between monument "MAZDA" and monument "FORD" using horizontal control coordinates per the OFFICE OF THE DOUGLAS COUNTY SURVEYOR, Douglas County, Oregon.
 Monument "FORD" was tied during the preliminary phases of this survey. Monument "FORD" has been destroyed between the period of gathering field data and creating this survey. It is included on this survey for informational purposes only.



REGISTERED
PROFESSIONAL
LAND SURVEYOR

Ronald A. Quimby

OREGON
JULY 14, 1978
RONALD A. QUIMBY
1986
EXP. DATE: 12-31-02

AA

SURVEYING & ENGINEERING, INC.

ENGINEERING-SURVEYING-PLANNING

3076 NE DIAMOND LAKE BLVD.
ROSEBURG, OREGON 97470
TEL (541)672-2096
FAX (541)672-0611