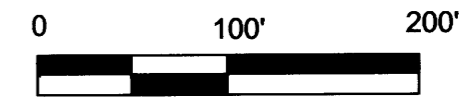


FILED
Date: 9/25/2001 By: JP
This survey consists of:
Map: M137-20
Narrative:
Corner Rpt: CS 64/30

DOUGLAS COUNTY
SURVEYOR



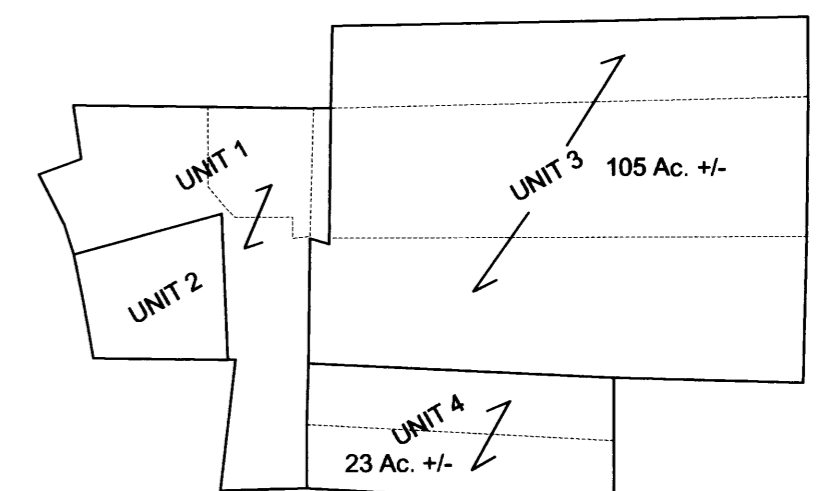
SEPTEMBER 2001

Keith L. Cubic 9/25/01
Douglas Co. Planning Dir. Date
Planning Dept File #01-M1074

60' wide access and utility easement to serve properties East

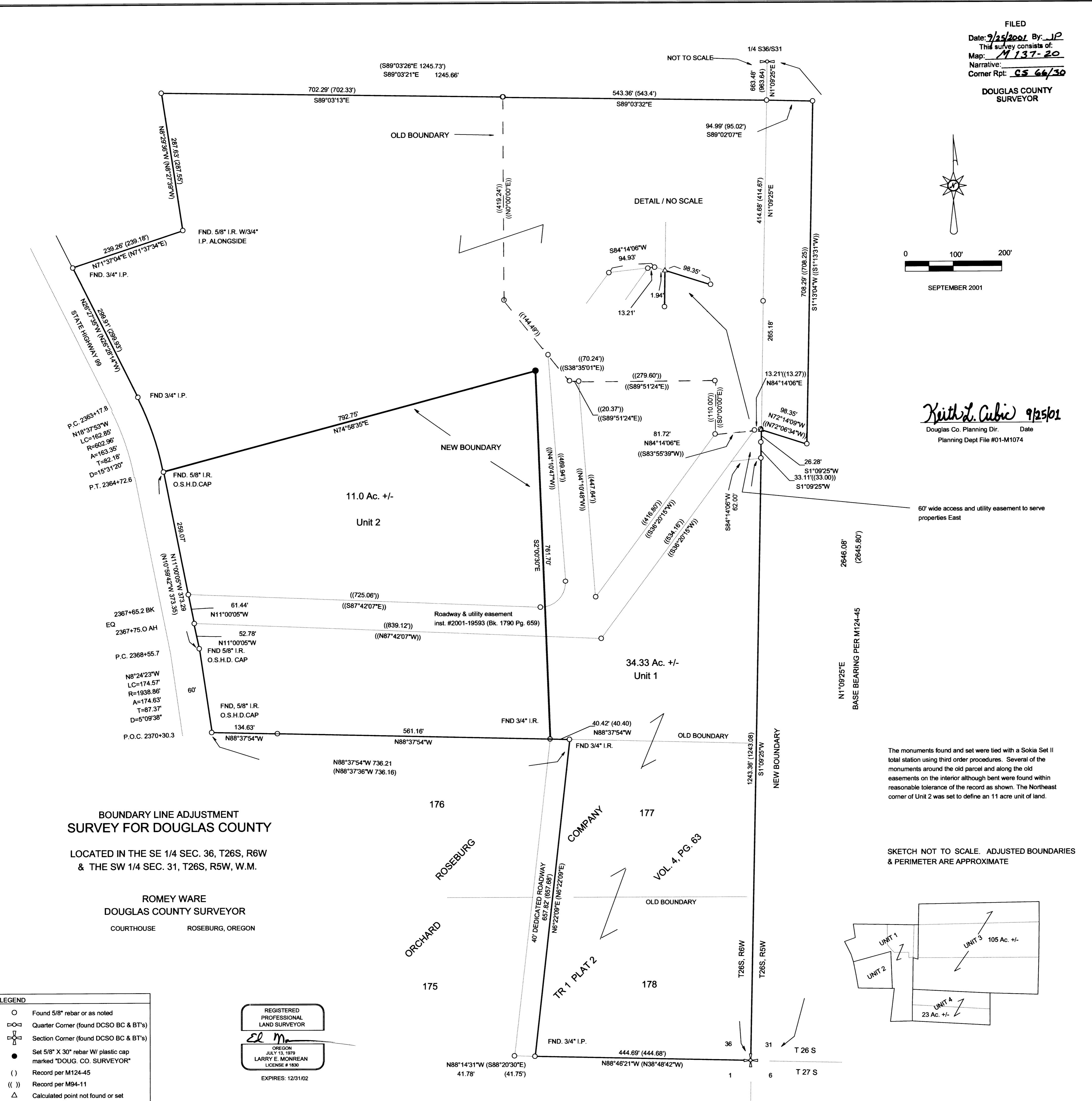
The monuments found and set were tied with a Sokkia Set II total station using third order procedures. Several of the monuments around the old parcel and along the old easements on the interior although bent were found within reasonable tolerance of the record as shown. The Northeast corner of Unit 2 was set to define an 11 acre unit of land.

SKETCH NOT TO SCALE. ADJUSTED BOUNDARIES & PERIMETER ARE APPROXIMATE



NOT TO SCALE

DETAIL / NO SCALE



**BOUNDARY LINE ADJUSTMENT
SURVEY FOR DOUGLAS COUNTY**

LOCATED IN THE SE 1/4 SEC. 36, T26S, R6W
& THE SW 1/4 SEC. 31, T26S, R5W, W.M.

**ROMEY WARE
DOUGLAS COUNTY SURVEYOR**

COURTHOUSE ROSEBURG, OREGON

LEGEND	
	Found 5/8" rebar or as noted
	Quarter Corner (found DCSO BC & BT's)
	Section Corner (found DCSO BC & BT's)
	Set 5/8" X 30" rebar W/ plastic cap marked "DOUG. CO. SURVEYOR"
()	Record per M124-45
(())	Record per M94-11
	Calculated point not found or set

REGISTERED
PROFESSIONAL
LAND SURVEYOR

EL M

OREGON
JULY 13, 1979
LARRY E. MONREAN
LICENSE # 1830
EXPIRES: 12/31/02