

# LONE ROCK TIMBER CO.

PO BOX 1127 ROSEBURG OREGON 97470 DATE: AUGUST, 2001  
SECTIONS 22, 27 TOWNSHIP 22 SOUTH, RANGE 5 WEST, W.M.  
DOUGLAS COUNTY, OREGON

LONE ROCK TIMBER TRACT: J22-5-22, J22-5-27 SCALE: 1" = 600'

### NARRATIVE:

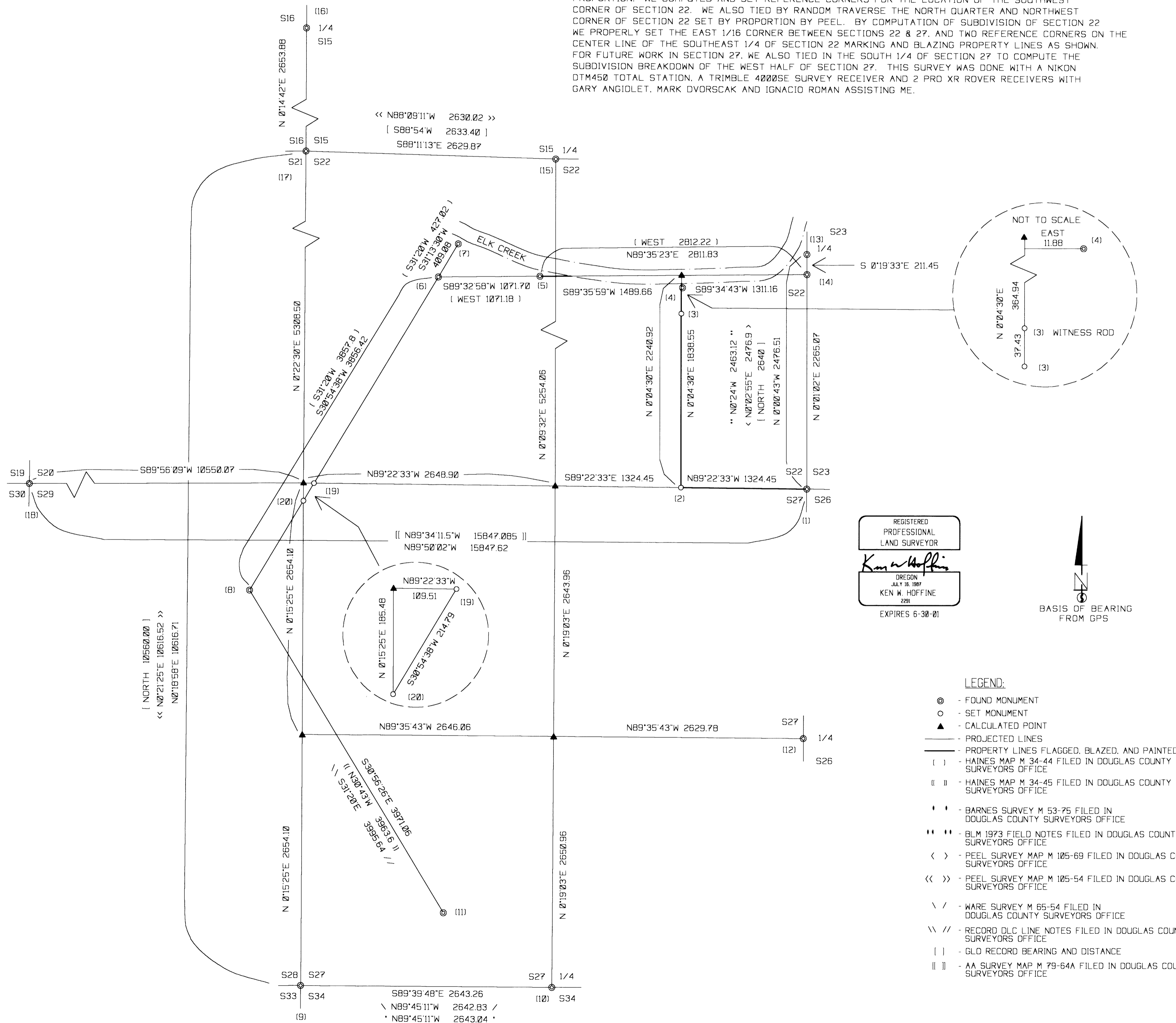
THIS SURVEY WAS CONDUCTED TO ESTABLISH PROPERTY LINES AND PROPERTY CORNERS FOR TIMBER CUTTING PURPOSES. WE INITIATED THIS SURVEY AT THE SOUTHEAST CORNER OF SECTION 22 A COUNTY BCIP SET FROM ORIGINAL EVIDENCE BEGINNING A RANDOM TRAVERSE WESTERLY AND NORTHERLY NEAR PROPERTY LINES TO ELK CREEK. FROM ELK CREEK WE RAN NUMEROUS BOTH OPEN AND CLOSED RANDOM TRAVERSES TIEING IN THE FOLLOWING CORNERS RENEWED FROM ORIGINAL EVIDENCE. WEST QUARTER CORNERS FOR SECTIONS 15, 23, AND 26, SOUTHWEST CORNERS OF SECTIONS 20 AND 27, AND THE DLC CORNER AS SHOWN HEREON. BOTH THE DOUGLAS COUNTY SURVEYORS OFFICE AND OURSELVES SEARCHED FOR ORIGINAL LOCATIONS OF THE SOUTHWEST CORNER, WEST 1/4 AND SOUTH 1/4 CORNERS OF SECTION 22 FINDING NO EVIDENCE. ALL OPEN THEODOLITE RANDOM TRAVERSES WERE CHECKED FOR CLOSURE BY GPS. THE SOUTHWEST CORNER OF SECTION 22 WAS COMPUTED BY DOUBLE PROPORTION FROM THE ABOVE ORIGINAL CORNER POSITIONS. I CONTACTED BLM CADASTRAL OFFICE CONCERNING POSSIBLY SETTING THE SOUTHWEST CORNER OF SECTION 22 FROM CORNER TIES FROM THE ORIGINAL APPLEGATE DONATION LAND CLAIM #38 WHICH THE BLM REJECTED AND RECOMMENDED DOUBLE PROPORTION. WE COMPUTED AND SET REFERENCE CORNERS FOR THE LOCATION OF THE SOUTHWEST CORNER OF SECTION 22. WE ALSO TIED BY RANDOM TRAVERSE THE NORTH QUARTER AND NORTHWEST CORNER OF SECTION 22 SET BY PROPORTION BY PEEL. BY COMPUTATION OF SUBDIVISION OF SECTION 22 WE PROPERLY SET THE EAST 1/16 CORNER BETWEEN SECTIONS 22 & 27, AND TWO REFERENCE CORNERS ON THE CENTER LINE OF THE SOUTHEAST 1/4 OF SECTION 22 MARKING AND BLAZING PROPERTY LINES AS SHOWN. FOR FUTURE WORK IN SECTION 27, WE ALSO TIED IN THE SOUTH 1/4 OF SECTION 27 TO COMPUTE THE SUBDIVISION BREAKDOWN OF THE WEST HALF OF SECTION 27. THIS SURVEY WAS DONE WITH A NIKON DTM450 TOTAL STATION, A TRIMBLE 4000SE SURVEY RECEIVER AND 2 PRO XR ROVER RECEIVERS WITH GARY ANGIOLET, MARK DVORCSAK AND IGNACIO ROMAN ASSISTING ME.

FILED  
Date: 8/22/2001 By: JLP  
This survey consists of:  
Map: M137-17  
Narrative:  
Corner Rpt:

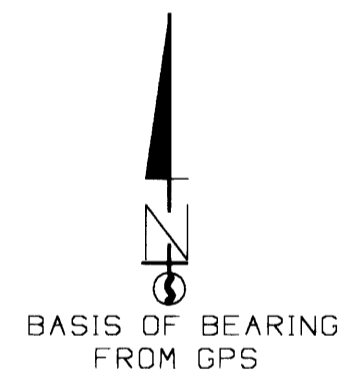
DOUGLAS COUNTY  
SURVEYOR

### CORNER INFORMATION:

- THE SECTION CORNER COMMON TO SECTIONS 22, 23, 26, 27  
FOUND 1958 DOUGLAS COUNTY BRASS CAP  
-- 21" DOUGLAS FIR BEARS N75 1/4"E, 13.5 FEET (RECORD N77"E, 13.8 FEET) WELL HEALED FACE  
-- 34" DOUGLAS FIR BEARS S78 3/4"E, 21.2 FEET (RECORD S78"E, 21.5 FEET) WELL HEALED FACE  
-- 15" MADRONE BEARS S85 1/2"W, 33.0 FEET (RECORD S85"W, 33.7 FEET) WELL HEALED FACE  
-- 22" DOUGLAS FIR STUMP BEARS N89"W, 37.9 FEET (RECORD N89"W, 38.3 FEET) WELL HEALED FACE  
CORNER LIES ON NORTHEAST SLOPE IN MIDDLE OF CUTOUT ROTTEN OLD GROWTH DOUGLAS FIR.
- THE EAST 1/16 CORNER BETWEEN SECTIONS 22 AND 27  
SET 5/8" X 40" IRON ROD WITH ALUMINUM CAP MARKED LRT PLS 2291  
-- 22" DOUGLAS FIR BEARS N37 3/4"E, 11.6 FEET, WE SCRIBE 1/16 S22 B.T. AND TAG  
-- 17" DOUGLAS FIR BEARS S9"E, 45.2 FEET, WE SCRIBE 1/16 S27 B.T. AND TAG  
CORNER LIES ON WEST EDGE OF RIDGETOP IN SECOND GROWTH TIMBER. AN OLD FENCE (MOSTLY DOWN) BEARS APPROXIMATELY 12 FEET SOUTH, FENCE RUNS EAST-WEST.
- PROPERTY LINE MONUMENT  
SET 5/8" X 40" IRON ROD WITH YELLOW PLASTIC CAP MARKED LRT PLS 2291.  
-- 11" DOUGLAS FIR BEARS N9 1/2"E, 19.8 FEET, WE SCRIBE B.T. AND TAG  
-- 5/8" X 40" IRON ROD WITH YELLOW PLASTIC CAP MARKED LRT PLS 2291 BEARS N0°04'30"E 37.4 FEET  
MONUMENT LIES ON GENTLE EAST SLOPE IN SECOND GROWTH TIMBER.
- FOUND IRON ROD SET BY WILFORD HAINES REF. MAP M34-44. ROD IS 11.88 FEET EAST OF TRUE NORTH-SOUTH PROPERTY LINE.
- PROPERTY CORNER  
FOUND 5/8" IRON ROD SET BY WILFORD HAINES ON SOUTH LINE OF DLC 43 REF. MAP M34-44.  
CORNER LIES ON NORTH SLOPE IN MIXED STAND OF CONIFERS AND HARDWOODS.  
A DIRT ROAD BEARS NORTH 25 FEET, ROAD RUNS GENERALLY EAST-WEST.
- THE SOUTH SOUTHWEST CORNER OF DLC 43  
FOUND 1975 DOUGLAS COUNTY CAP  
CORNER LIES IN FENCE LINE IN PASTURE. FENCE RUNS NORTHEAST-SOUTHWEST ON EAST LINE OF DLC 38.
- PROPERTY CORNER  
FOUND IRON ROD SET BY WILFORD HAINES REF. MAP M34-44.  
CORNER LIES IN FENCE LINE ON EAST LINE OF DLC 38.
- INTERIOR CORNER OF DLC 38  
FOUND 1975 DOUGLAS COUNTY CAP IN GOOD CONDITION.  
-- 27" MAPLE BEARS N78 1/2"E, 98.4 FEET (RECORD N79"E, 91.0 FEET) WELL HEALED FACE, NO TAG  
-- 15" OAK BEARS N38"E, 120.5 FEET (RECORD N39"E, 120.7 FEET) WELL HEALED FACE AND TAG  
CORNER LIES IN PASTURE AT GROUND LEVEL.
- THE SECTION CORNER COMMON TO SECTIONS 27, 28, 33, AND 34  
FOUND 1958 DOUGLAS COUNTY CAP IN GOOD CONDITION.  
CORNER LIES APPROXIMATELY 80 FEET WEST OF STATE HIGHWAY 99 ACROSS FROM RAILROAD SIGNAL 6053.  
CORNER LIES IN HEAVY BLACKBERRY BRUSH, UNABLE TO SEE B.T.S.
- THE 1/4 CORNER BETWEEN SECTIONS 27 AND 34  
FOUND PE 2129 CAP IN GOOD CONDITION, 1.0 FEET ABOVE GROUND.  
-- 17" OAK BEARS S18 3/4"E, 18.8 FEET (RECORD S20"E, 18.8 FEET) WELL HEALED FACE, NO TAG  
-- 17" ROTTEN OAK STUMP BEARS N41 1/4"E, 23.1 FEET (RECORD N43"E, 23.5 FEET) HEALED FACE, NO TAG  
CORNER LIES ON SOUTH SLOPE, AN OLD FENCE BEARS EAST APPROXIMATELY 8 FEET, FENCE RUNS NORTH-SOUTH.
- THE SOUTHEAST CORNER OF DLC 38  
FOUND 1981 DOUGLAS COUNTY CAP IN GOOD CONDITION, 1.1 FEET ABOVE GROUND.  
-- 9" CHERRY BEARS N70"W, 19.7 FEET (RECORD N70"W, 19.5 FEET) FRESH FACE WITH VISIBLE SCRIBING  
-- 38" OAK BEARS N6 1/2"W, 23.2 FEET (RECORD N6"W, 23.4 FEET) WELL HEALED FACE  
-- 13" DOUGLAS FIR BEARS N4 1/2"E, 16.2 FEET (RECORD N5 1/2"E, 16.4 FEET) FRESH FACE WITH VISIBLE SCRIBING  
-- 17" DOUGLAS FIR BEARS N73 1/4"E, 16.5 FEET (RECORD N73 1/2"E, 16.0 FEET) FRESH FACE WITH VISIBLE SCRIBING  
CORNER LIES ON WEST SLOPE APPROXIMATELY 20 FEET EAST OF OLD ROAD GRADE.
- THE 1/4 CORNER BETWEEN SECTIONS 26 AND 27  
FOUND 1958 DOUGLAS COUNTY CAP IN GOOD CONDITION WITH STONE SET BY THIEL ALONG SIDE.  
-- 27" DOUGLAS FIR BEARS N48 1/4"W, 23.8 FEET (RECORD N48"W, 24.0 FEET) WELL HEALED FACE, WE TAG  
-- 32" ROTTEN DOUGLAS FIR STUMP BEARS S9 3/4"E, 25.7 FEET (RECORD S10"E, 25.5 FEET) HEALED FACE AND TAG  
-- 15" DOUGLAS FIR BEARS S79 1/4"E, 33.5 FEET, WE SCRIBE 1/4 S26 B.T. AND TAG  
CORNER LIES ON NORTH SLOPE APPROXIMATELY 115 FEET BELOW RIDGETOP IN SECOND GROWTH TIMBER.
- THE 1/4 CORNER BETWEEN SECTIONS 22 AND 23  
FOUND 1973 BLM CAP IN GOOD CONDITION.  
-- 29" DOUGLAS FIR BEARS S5"W, 4.7 FEET, LOCATION TAG, NO RECORD  
-- 40" DOUGLAS FIR STUMP BEARS S74"W, 27.6 FEET (RECORD S70"W, 27.4 FEET) CHOPPED OUT FACE  
-- 25" DOUGLAS FIR BEARS S63 1/2"W, 38.8 FEET (RECORD S64 1/2"W, 38.4 FEET) CHOPPED OUT FACE  
-- 9" DOUGLAS FIR BEARS S82"E, 38.0 FEET (RECORD S79"E, 38.3 FEET) HEALED FACE AND TWO TAGS  
CORNER LIES IN FENCE LINE, FENCE RUNS NORTH, SOUTH AND EAST.
- THE SOUTHEAST CORNER OF DLC 43  
FOUND 5/8" IRON ROD SET BY WILFORD HAINES REF. MAP M34-44.  
-- LARGE ROTTEN DOUGLAS FIR STUMP BEARS S69"W, 20.8 FEET (RECORD S68"W, 21.1 FEET) VISIBLE SCRIBING  
-- 18" DOUGLAS FIR STUMP BEARS S65"W, 8.2 FEET (RECORD S62"W, 8.4 FEET) VISIBLE SCRIBING  
-- 22" DOUGLAS FIR BEARS N31"W, 9.2 FEET (RECORD N31"W, 8.8 FEET) HEALED FACE, FENCE CORNER TREE  
CORNER LIES 9 FEET SOUTH OF A FENCE CORNER.
- THE 1/4 CORNER BETWEEN SECTIONS 15 AND 22  
FOUND 1988 PLS 752 CAP IN GOOD CONDITION.  
-- 35" DOUGLAS FIR AT RECORD BEARING AND DISTANCE (RECORD N27"E, 74.8 FEET) WELL HEALED FACE AND TAG  
-- 40" OAK AT RECORD BEARING AND DISTANCE (RECORD S83"E, 142.1 FEET) WELL HEALED FACE AND TAG  
CORNER LIES ON WEST SLOPE IN PASTURE, A FENCE BEARS WEST 14.5 FEET, FENCE RUNS NORTH-SOUTH.
- THE 1/4 CORNER BETWEEN SECTIONS 15 AND 16  
FOUND 1" IRON PIPE BENT OVER TO NORTHWEST  
-- LARGE ROTTEN DOUGLAS FIR STUMP AT RECORD BEARING AND DISTANCE (RECORD S48"W, 37.6 FEET) WITH CHOPPED OUT FACE  
-- CEDAR STUMP AT RECORD BEARING AND DISTANCE (RECORD N68"W, 29.5 FEET) WITH CHOPPED OUT FACE  
-- ROTTEN WAD OF WHITE FIR WINDFALL AT APPROXIMATE RECORD BEARING AND DISTANCE (RECORD S29"E, 21.1 FEET)  
CORNER LIES ON EAST SLOPE NEXT TO FENCE CORNER POST, FENCE RUNS NORTH, SOUTH AND WEST.
- THE SECTION CORNER COMMON TO SECTIONS 15, 16, 21, AND 22  
FOUND 1988 PLS 752 CAP IN GOOD CONDITION, 1.0 FEET ABOVE GROUND.  
DID NOT MEASURE TO B.T.'S CORNER LIES ON SOUTH SIDE OF SPUR RIDGE IN GROWN OVER PASTURE.  
A METAL FENCE POST BEARS WEST 1.0 FEET.
- THE SECTION CORNER COMMON TO SECTIONS 19, 20, 29 AND 30  
FOUND 1958 DOUGLAS COUNTY CAP 1.5 FEET ABOVE GROUND BENT SOUTHERLY, BUT WE STRAIGHTEN.  
-- 37" OAK BEARS S80"E, 112.8 FEET (RECORD S81"E, 113.0 FEET) WELL HEALED FACE AND TAG  
-- 32" OAK (DEAD) BEARS N84 3/4"E, 296.5 FEET (RECORD N85"E, 298.3 FEET) OPEN ROTTEN FACE, NO TAG  
-- NE OAK FOUND AT APPROXIMATE RECORD BEARING AND DISTANCE (RECORD N29"E, 95.4 FEET) WELL HEALED FACE AND TAG  
-- SW OAK FOUND AT APPROXIMATE RECORD BEARING AND DISTANCE (RECORD S80"W, 24.4 FEET) WELL HEALED FACE, NO TAG  
-- NO EVIDENCE OF NW B.T.  
-- 6" X 12" X 14" STONE BEARS NORTH 8.0 FEET (RECORD NORTH 8.0 FEET)  
CORNER LIES ON SOUTH SLOPE IN OPEN STAND OF HARDWOODS APPROXIMATELY 140 FEET WEST OF A FENCE, FENCE RUNS NORTH - SOUTH
- REFERENCE CORNER  
SET 5/8" IRON ROD WITH YELLOW PLASTIC CAP MARKED LONE ROCK TIMBER PLS 2291  
--23" DOUGLAS FIR BEARS N20 1/2"E 54.3 FEET WE SCRIBE "BT" AND TAG  
--21" DOUGLAS FIR BEARS S32 1/4"E 29.3 FEET WE SCRIBE "BT" AND TAG  
--THE CALCULATED POSITION FOR THE NORTHWEST CORNER OF SECTION 27 BEARS N89°22'33"W 109.514 FEET  
CORNER LIES ON STEEP WEST SLOPE APPROXIMATELY 150 FEET ABOVE PASTURE IN MIXED CONIFERS AND HARDWOODS.
- REFERENCE CORNER  
SET 5/8" IRON ROD WITH YELLOW PLASTIC CAP MARKED LONE ROCK TIMBER PLS 2291  
--9" DOUGLAS FIR BEARS S46 3/4"E 17.0 FEET WE SCRIBE "BT" AND TAG  
--12" DOUGLAS FIR BEARS S27 3/4"W 23.8 FEET WE SCRIBE "BT" AND TAG  
--THE CALCULATED POSITION FOR THE NORTHWEST CORNER OF SECTION 27 BEARS N0°15'25"E 185.482 FEET  
CORNER LIES ON VERY STEEP WEST SLOPE IN MIXED HARDWOODS AND YOUNG CONIFER REPROD.



REGISTERED  
PROFESSIONAL  
LAND SURVEYOR  
*Ken W. Hoffline*  
OREGON  
JULY 16, 1987  
KEN W. HOFFLINE  
2001  
EXPIRES 6-30-01



### LEGEND:

- ⊙ - FOUND MONUMENT
- - SET MONUMENT
- ▲ - CALCULATED POINT
- - PROJECTED LINES
- — — - PROPERTY LINES FLAGGED, BLAZED, AND PAINTED
- ( ) - HAINES MAP M 34-44 FILED IN DOUGLAS COUNTY SURVEYORS OFFICE
- || || - HAINES MAP M 34-45 FILED IN DOUGLAS COUNTY SURVEYORS OFFICE
- ' ' - BARNES SURVEY M 53-75 FILED IN DOUGLAS COUNTY SURVEYORS OFFICE
- '' '' - BLM 1973 FIELD NOTES FILED IN DOUGLAS COUNTY SURVEYORS OFFICE
- < > - PEEL SURVEY MAP M 105-69 FILED IN DOUGLAS COUNTY SURVEYORS OFFICE
- << >> - PEEL SURVEY MAP M 105-54 FILED IN DOUGLAS COUNTY SURVEYORS OFFICE
- \ / - WARE SURVEY M 65-54 FILED IN DOUGLAS COUNTY SURVEYORS OFFICE
- \\ // - RECORD DLC LINE NOTES FILED IN DOUGLAS COUNTY SURVEYORS OFFICE
- | | - GLO RECORD BEARING AND DISTANCE
- || || - AA SURVEY MAP M 79-64A FILED IN DOUGLAS COUNTY SURVEYORS OFFICE