

RECORD OF SURVEY

LOCATED IN
SECTIONS 1 AND 12, T31S, R9W, W.M.
DOUGLAS COUNTY, OREGON

FILED
Date: 7/5/2001 By: J.P.
This survey consists of:
Map: M137-13
Narrative:
Corner Rpt:

DOUGLAS COUNTY
SURVEYOR

NARRATIVE:

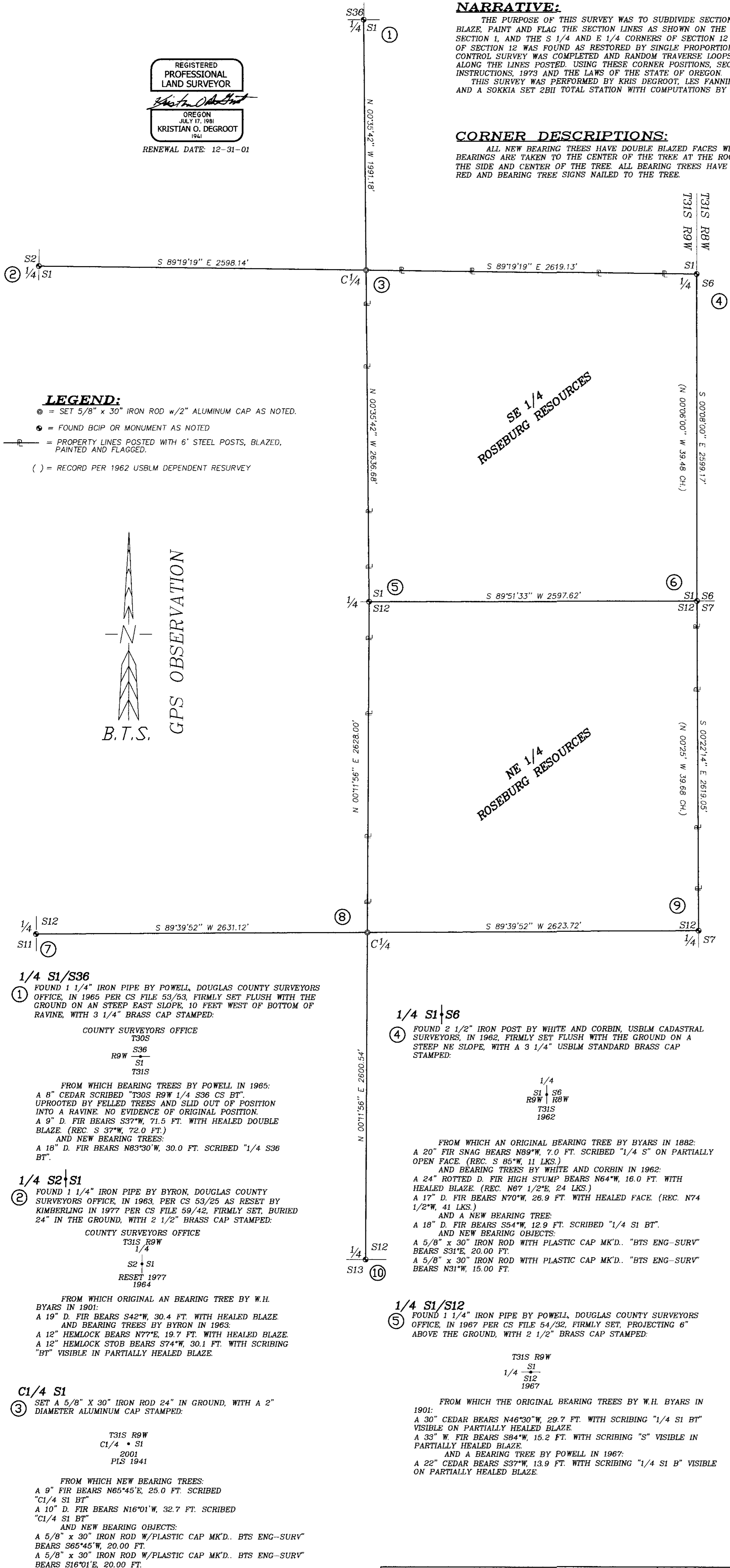
THE PURPOSE OF THIS SURVEY WAS TO SUBDIVIDE SECTION 1 AND SECTION 12, MONUMENT THE CENTER 1/4 CORNERS AND TO POST, BLAZE, PAINT AND FLAG THE SECTION LINES AS SHOWN ON THE FACE OF THE MAP. THE SE, N 1/4, S 1/4, E 1/4 AND W 1/4 CORNERS OF SECTION 1, AND THE S 1/4 AND E 1/4 CORNERS OF SECTION 12 WERE FOUND AS RESTORED IN THEIR ORIGINAL POSITION. THE W 1/4 CORNER OF SECTION 12 WAS FOUND AS RESTORED BY SINGLE PROPORTIONATE MEASUREMENT BY RONALD BRANDT IN 1971 PER CS 55/191-2. A GPS CONTROL SURVEY WAS COMPLETED AND RANDOM TRAVERSE LOOPS WERE SURVEYED BETWEEN THE CONTROLLING CORNERS AND GPS POINTS AND ALONG THE LINES POSTED. USING THESE CORNER POSITIONS, SECTIONS 1 AND 12 WERE SUBDIVIDED AS PER THE MANUAL OF SURVEYING INSTRUCTIONS, 1973 AND THE LAWS OF THE STATE OF OREGON.

THIS SURVEY WAS PERFORMED BY KRIS DEGROOT, LES FANNING, MICKEY CALVERT AND MATT DIXON USING A LEICA SR299 GPS RECEIVER AND A SOKKIA SET 2BII TOTAL STATION WITH COMPUTATIONS BY KRIS DEGROOT AND DRAFTING BY BILL WARREN.

CORNER DESCRIPTIONS:

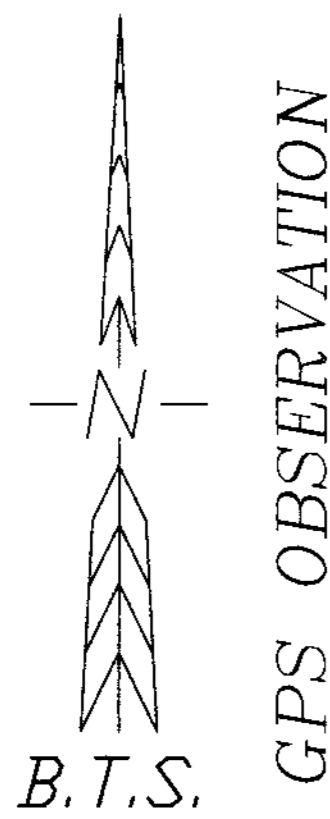
ALL NEW BEARING TREES HAVE DOUBLE BLAZED FACES WITH A BRASS WASHER STAMPED "PLS 1941" NAILED INTO THE LOWER BLAZE. BEARINGS ARE TAKEN TO THE CENTER OF THE TREE AT THE ROOT CROWN AND DISTANCES ARE MEASURED TO A NAIL IN THE ROOT CROWN AT THE SIDE AND CENTER OF THE TREE. ALL BEARING TREES HAVE A 6" RED BAND PAINTED AROUND THE TREE AND THE BLAZED FACE PAINTED RED AND BEARING TREE SIGNS NAILED TO THE TREE.

REGISTERED
PROFESSIONAL
LAND SURVEYOR
Kristian O. Degroot
OREGON
JULY 17, 1981
KRISTIAN O. DEGROOT
1941
RENEWAL DATE: 12-31-01



LEGEND:

- ⊙ = SET 5/8" x 30" IRON ROD w/2" ALUMINUM CAP AS NOTED.
- = FOUND BCIP OR MONUMENT AS NOTED
- = PROPERTY LINES POSTED WITH 6" STEEL POSTS, BLAZED, PAINTED AND FLAGGED.
- () = RECORD PER 1962 USBLM DEPENDENT RESURVEY



S1/S6/S7/S12

⑥ FOUND 2 1/2" POST BY WHITE AND CORBIN, USBLM CADASTRAL SURVEYORS IN 1962, FIRMLY SET, PROJECTING 2" ABOVE THE GROUND, WITH A 3 1/4" USBLM STANDARD BRASS CAP STAMPED:

T31S
R9W, R6W
S1/S6
S12/S7
1962

FROM WHICH ORIGINAL BEARING TREES BY BYARS IN 1882:
A 22" FIR SNAG BEARS N40°E, 25.7 FT. NO SCRIBING FOUND. (REC. 40 LKS.)
A 18" ROTTED FIR STUMP BEARS S35°E, 25.1 FT. NO SCRIBING FOUND.
A 23" FIR SNAG BEARS S58°W, 24.4 FT. NO SCRIBING FOUND. (REC. 35 LKS.)
A 20" FIR BEARS N42°30'W, 26.4 FT. WITH HEALED FACE.
AND BEARING TREES BY WHITE AND CORBIN IN 1962:
A 24" FIR STUMP BEARS N19°E, 27.6 FT. NO SCRIBING FOUND. (REC. 41 LKS.)
A 22" FIR BEARS S47°E, 34.0 FT. WITH HEALED FACE. (REC. 53 LKS.)
A 20" FIR BEARS S30°W, 16.4 FT. WITH HEALED FACE. (REC. 25 LKS.)
AND A NEW BEARING TREE:
A 6" CEDAR BEARS N36°E, 26.5 FT. SCRIBED "T31S R9W S6 BT".

1/4 S11/S12

⑦ FOUND 1" IRON ROD BY BRANDT, IN 1971 PER CS FILE 55/191-2, FIRMLY SET FLUSH WITH THE GROUND:

FROM WHICH BEARING TREES BY BRANDT IN 1971:
A 17" D. FIR BEARS N83°58'W, 19.8 FT. WITH HEALED BLAZE. (REC. 19.54 FT.)
A 12" D. FIR BEARS S26°46'E, 30.0 FT. WITH HEALED BLAZE. (REC. 29.54 FT.)

C1/4 S12

⑧ SET A 5/8" x 30" IRON ROD 29" IN THE GROUND, WITH A 2" ALUMINUM CAP STAMPED:

T31S R9W
C1/4 • S12
2001
PLS 1941

FROM WHICH NEW BEARING TREES:
A 14" D. FIR BEARS S127°26'E, 20.8 FT. SCRIBED "C 1/4 S12 BT".
A 16" D. FIR BEARS N81°52'41"W, 34.0 FT. SCRIBED "C 1/4 S12 BT".
AND NEW BEARING OBJECTS:

A 5/8" x 30" IRON ROD WITH PLASTIC CAP MK'D. "BTS ENG-SURV" BEARS S81°52'41"E, 20.0 FT.
A 5/8" x 30" IRON ROD WITH PLASTIC CAP MK'D. "BTS ENG-SURV" BEARS N127°26'W, 20.0 FT.

1/4 S12/S7

⑨ FOUND 2 1/2" IRON POST BY WHITE AND CORBIN, USBLM CADASTRAL SURVEYORS IN 1962, FIRMLY SET FLUSH WITH THE GROUND, WITH 3 1/4" USBLM STANDARD BRASS CAP STAMPED:

1/4
S12/S7
R9W/R6W
T31S
1962

FROM WHICH ORIGINAL BEARING TREES BY BYARS IN 1882:
A ROOT HOLE BEARS S44°E, 17.2 FT. WITH AN UPROOTED 56" D. FIR STUMP LYING ON THE NORTH EDGE OF THE BCIP.
A 47" FIR STUMP BEARS WEST, 13.2 TO FACE, 14.2 FT. TO BRIDGE SPIKE. (CS 61/9 REC. 14.5 FT. TO BRIDGE SPIKE)
AND A BEARING TREE BY WHITE AND CORBIN IN 1962:
A 56" FIR STUMP BEARS N80°W, 32.5 FT. NO SCRIBING VISIBLE. (REC. 50 LKS.)
AND A BEARING TREE BY QUIBELL, DOUGLAS COUNTY SURVEYORS OFFICE IN 1981 PER CS 61/19:
A 48" FIR STUMP BEARS N38°E, 66.9 FT. TO A BOAT SPIKE.
AND NEW BEARING TREES:
A 6" D. FIR BEARS S31°E, 16.5 FT. SCRIBED "1/4 S7 BT".
A 9" W. FIR BEARS S76°W, 22.0 FT. SCRIBED "1/4 S12 BT".

1/4 S12/S13

⑩ FOUND 1 1/4" IRON PIPE, BY POWELL, DOUGLAS COUNTY SURVEYORS OFFICE, IN 1967 PER CS 54/32, FIRMLY SET, PROJECTING 2" ABOVE THE GROUND WITH A 2 1/2" BRASS CAP STAMPED:

COUNTY SURVEYORS OFFICE
T31S R9W
S12
1/4
S13
1967

FROM WHICH ORIGINAL BEARING TREES BY W.H. BYARS IN 1901:
A 60" D. FIR STUMP BEARS N75°E, 10.6 FT. WITH HEALED BLAZE.
A 24" ROTTED W. FIR STUMP BEARS S45°W, 6.6 FT. WITH SCRIBING "1/4" VISIBLE.
AND BEARING TREES BY POWELL IN 1967:
A 18" W. FIR BEARS N54°E, 52.4 FT. WITH A HEALED BLAZE.
A 18" D. FIR BEARS S14°E, 19.7 FT. WITH A HEALED BLAZE.

1/4 S1/S36

① FOUND 1 1/4" IRON PIPE BY POWELL, DOUGLAS COUNTY SURVEYORS OFFICE, IN 1965 PER CS FILE 53/53, FIRMLY SET FLUSH WITH THE GROUND ON AN STEEP EAST SLOPE, 10 FEET WEST OF BOTTOM OF RAVINE, WITH 3 1/4" BRASS CAP STAMPED:

COUNTY SURVEYORS OFFICE
T30S
S36
R9W
S1
T31S

FROM WHICH BEARING TREES BY POWELL IN 1965:
A 8" CEDAR SCRIBED "T30S R9W 1/4 S36 CS BT". UPROOTED BY FELLED TREES AND SLID OUT OF POSITION INTO A RAVINE. NO EVIDENCE OF ORIGINAL POSITION.
A 9" D. FIR BEARS S37°W, 71.5 FT. WITH HEALED DOUBLE BLAZE. (REC. S. 37°W, 72.0 FT.)
AND NEW BEARING TREES:
A 18" D. FIR BEARS N83°30'W, 30.0 FT. SCRIBED "1/4 S36 BT".

1/4 S2/S1

② FOUND 1 1/4" IRON PIPE BY BYRON, DOUGLAS COUNTY SURVEYORS OFFICE, IN 1963, PER CS 53/25 AS RESET BY KIMBERLING IN 1977 PER CS FILE 59/42, FIRMLY SET, BURIED 24" IN THE GROUND, WITH 2 1/2" BRASS CAP STAMPED:

COUNTY SURVEYORS OFFICE
T31S R9W
1/4
S2/S1
RESET 1977
1964

FROM WHICH ORIGINAL AN BEARING TREE BY W.H. BYARS IN 1901:
A 19" D. FIR BEARS S42°W, 30.4 FT. WITH HEALED BLAZE AND BEARING TREES BY BYRON IN 1963:
A 12" HEMLOCK BEARS N77°E, 19.7 FT. WITH HEALED BLAZE.
A 12" HEMLOCK STOB BEARS S74°W, 30.1 FT. WITH SCRIBING "BT" VISIBLE IN PARTIALLY HEALED BLAZE.

C1/4 S1

③ SET A 5/8" x 30" IRON ROD 24" IN GROUND, WITH A 2" DIAMETER ALUMINUM CAP STAMPED:

T31S R9W
C1/4 • S1
2001
PLS 1941

FROM WHICH NEW BEARING TREES:
A 9" FIR BEARS N65°45'E, 25.0 FT. SCRIBED "C1/4 S1 BT"
A 10" D. FIR BEARS N16°01'W, 32.7 FT. SCRIBED "C1/4 S1 BT"
AND NEW BEARING OBJECTS:
A 5/8" x 30" IRON ROD W/PLASTIC CAP MK'D. "BTS ENG-SURV" BEARS S65°45'W, 20.00 FT.
A 5/8" x 30" IRON ROD W/PLASTIC CAP MK'D. "BTS ENG-SURV" BEARS S16°01'E, 20.00 FT.

1/4 S1/S6

④ FOUND 2 1/2" IRON POST BY WHITE AND CORBIN, USBLM CADASTRAL SURVEYORS, IN 1962, FIRMLY SET FLUSH WITH THE GROUND ON A STEEP NE SLOPE, WITH A 3 1/4" USBLM STANDARD BRASS CAP STAMPED:

1/4
S1/S6
R9W/R6W
T31S
1962

FROM WHICH AN ORIGINAL BEARING TREE BY BYARS IN 1882:
A 20" FIR SNAG BEARS N89°W, 7.0 FT. SCRIBED "1/4 S" ON PARTIALLY OPEN FACE. (REC. S 85°W, 11 LKS.)
AND BEARING TREES BY WHITE AND CORBIN IN 1962:
A 24" ROTTED D. FIR HIGH STUMP BEARS N64°W, 16.0 FT. WITH HEALED BLAZE. (REC. N67 1/2°E, 24 LKS.)
A 17" D. FIR BEARS N70°W, 26.9 FT. WITH HEALED FACE. (REC. N74 1/2°W, 41 LKS.)
AND A NEW BEARING TREE:
A 18" D. FIR BEARS S54°W, 12.9 FT. SCRIBED "1/4 S1 BT".
AND NEW BEARING OBJECTS:
A 5/8" x 30" IRON ROD WITH PLASTIC CAP MK'D. "BTS ENG-SURV" BEARS S31°E, 20.00 FT.
A 5/8" x 30" IRON ROD WITH PLASTIC CAP MK'D. "BTS ENG-SURV" BEARS N31°W, 15.00 FT.

1/4 S1/S12

⑤ FOUND 1 1/4" IRON PIPE BY POWELL, DOUGLAS COUNTY SURVEYORS OFFICE, IN 1967 PER CS FILE 54/32, FIRMLY SET, PROJECTING 6" ABOVE THE GROUND, WITH 2 1/2" BRASS CAP STAMPED:

T31S R9W
1/4
S1
S12
1967

FROM WHICH THE ORIGINAL BEARING TREES BY W.H. BYARS IN 1901:
A 30" CEDAR BEARS N46°30'W, 29.7 FT. WITH SCRIBING "1/4 S1 BT" VISIBLE ON PARTIALLY HEALED BLAZE.
A 33" W. FIR BEARS S84°W, 15.2 FT. WITH SCRIBING "S" VISIBLE IN PARTIALLY HEALED BLAZE.
AND A BEARING TREE BY POWELL IN 1967:
A 22" CEDAR BEARS S37°W, 13.9 FT. WITH SCRIBING "1/4 S1 B" VISIBLE ON PARTIALLY HEALED BLAZE.

BTS ENGINEERING & SURVEYING, INC.
431 S.E. MAIN ST., ROSEBURG, OR 97470
PHONE (541) 673-0966 FAX (541) 673-0105

SCALE: 1" = 400'
DATE: JUNE 11, 2001

FOR: ROSEBURG RESOURCES
P.O. BOX 1089
ROSEBURG, OREGON 97470

JOB #: 01-025
FILE: RR31-9-1.DWG
SHEET 1 OF 1