

SURVEY FOR:
STATE OF OREGON - DEPARTMENT OF FORESTRY
SECTION 18, T. 33S., R. 6W., W. M.
DOUGLAS AND JOSEPHINE COUNTIES, OREGON
THEODOLITE AND EDM SURVEY BY:
J. M. MCINTOSH, T. VAN VLEET AND R. C. HALL
DRAWN BY: T. VAN VLEET
FEBRUARY 22, 2001
SCALE 1" = 500'

SURVEY BY:
REGISTERED
PROFESSIONAL
LAND SURVEYOR
James M. McIntosh
OREGON
JULY 13, 1984
JAMES M. MCINTOSH
2103
JAMES M. MCINTOSH
63612 FIFTH ROAD
COOS BAY, OREGON
EXPIRATION DATE OF CERTIFICATE 12-31-02

FILED
Date: 4/9/2001 By: JP
This survey consists of:
Map: M136-74
Narrative: _____
Corner Rpt: _____
**DOUGLAS COUNTY
SURVEYOR**

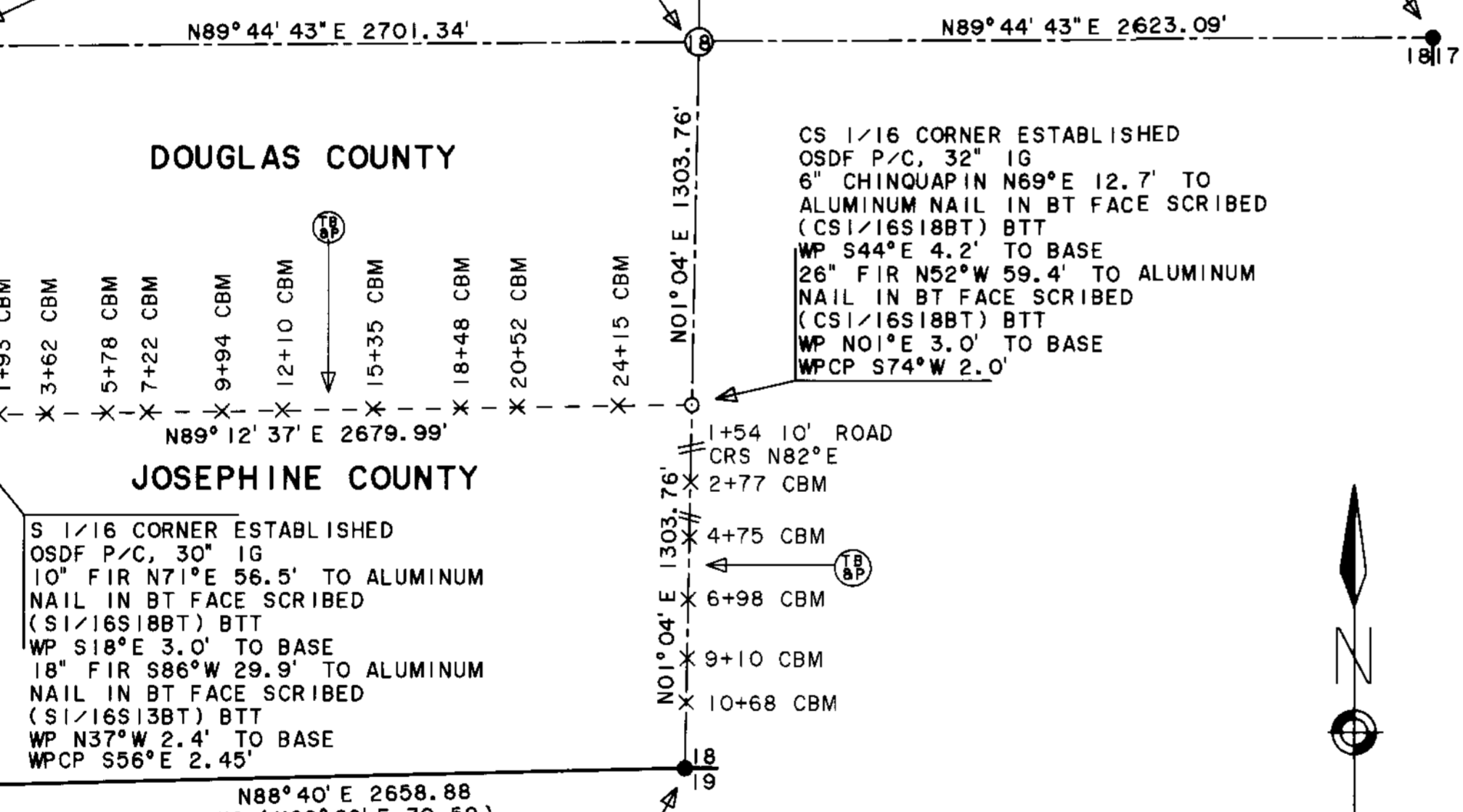
1/4 CORNER FOUND
BLM P/C, 1963 (IN PLACE)
24" FIR (1855) N52°W 32 LKS
(NOW 40" IN PLACE, FACE
EXPOSED PARTIAL SCRIBES
VISIBLE, BTT)
6" FIR (1963) S72°E 140 LKS
(NOW 12" IN PLACE, FACE
CLOSED)
10" FIR (1963) S78°W 74 LKS
(NOW 11" X 25' HIGH SNAG IN
PLACE, FACE OPEN PARTIAL
SCRIBES VISIBLE)
REWITNESS
WP N69°W 2.9' TO BASE
WP S53°E 3.1' TO BASE

CTR 1/4 CORNER ESTABLISHED
OSDF P/C, 30" IG
13" FIR N43°W 15.6' TO ALUMINUM NAIL IN
BT FACE SCRIBED (C1/4S18BT) BTT
15" FIR N39°E 11.3' TO ALUMINUM NAIL IN
BT FACE SCRIBED (C1/4S18BT) BTT
13" CEDAR S62°E 5.7' TO ALUMINUM NAIL
IN BT FACE SCRIBED (C1/4S18BT) BTT
WP S11°E 3.15' TO BASE
WPCP S61°W 3.5'

1/4 CORNER FOUND
BLM P/C, 1964 (IN PLACE)
10" FIR (1964) N57°E 55 1/2 LKS (NOW
21" IN PLACE, FACE CLOSED) ADDED BTT
16" FIR (1964) S76°W 39 LKS (NOW 29"
IN PLACE, FACE CLOSED) ADDED BTT
REWITNESSED
25" FIR N01°E 16.4' TO ALUMINUM NAIL
IN BT FACE SCRIBED (1/4S7BT) BTT
WP S05°E 3.9' TO BASE

1/4 CORNER FOUND
BLM AP&C, 1982 (IN PLACE)
10" B. OAK (1882) N45°E 25 LKS (NOW 20"
IN PLACE, FACE CLOSED) ADDED BTT
12" LAUREL (1882) WEST 14 LKS (NOW
DEPRESSION IN PLACE)
29" P. PINE (1982) S86 3/4°E 62 1/2 LKS
(NOW 32" IN PLACE, FACE CLOSED, BTT)
24" FIR (1982) S55 3/4°W 83 LKS (NOW
29" IN PLACE, FACE CLOSED, BTT)
REWITNESSED
WP N33°W 3.50' TO BASE
WP S36°E 3.45' TO BASE

CS 1/16 CORNER ESTABLISHED
OSDF P/C, 32" IG
6" CHINQUAPIN N69°E 12.7' TO
ALUMINUM NAIL IN BT FACE SCRIBED
(CS1/16S18BT) BTT
WP S44°E 4.2' TO BASE
26" FIR N52°W 59.4' TO ALUMINUM
NAIL IN BT FACE SCRIBED
(CS1/16S18BT) BTT
WP N01°E 3.0' TO BASE
WPCP S74°W 2.0'



- LEGEND**
- OSDF P/C = OREGON STATE DEPARTMENT OF FORESTRY 1 1/2" X 36" ALUMINUM PIPE WITH 3 3/4" ALUMINUM CAP AND MAGNETIC INSERT
 - BLM P/C = BUREAU OF LAND MANAGEMENT 2 1/2" X 28" IRON PIPE WITH BRASS CAP
 - BLM AP&C = BUREAU OF LAND MANAGEMENT 2 1/2" X 28" ALUMINUM PIPE AND CAP
 - P. PINE = PONDEROSA PINE
 - B. OAK = BLACK OAK
 - BTT = BEARING TREE TAG
 - BT = BEARING TREE
 - ⊙ = MONUMENT FOUND
 - ⊙ = ORANGE CARSONITE MARKER CBM-250 LABELED WITNESS POST
 - ⊙ = MONUMENT SET
 - ⊗ = ORANGE CARSONITE MARKER AND STATION CBM-250 LABELED BOUNDARY MARKER
 - IG = IN GROUND
 - ⊙ = TRUE BLAZED AND POSTED
 - ⊙ = ESTABLISHED
 - ⊙ = NEW MONUMENT SET
 - YMLP = YELLOW METAL LOCATION POSTER
 - WPCP = 4" X 4" X 72" WHITE PAINTED CEDAR POST
 - #1 () = RECORD BEARING AND DISTANCE IN CHAINS LAKE AND HYDE, 1855, CONTRACT NO. 54
 - #2 () = RECORD BEARING AND DISTANCE IN CHAINS WILLIAM H. BYARS, 1882, CONTRACT NO. 431
 - #3 () = RECORD BEARING AND DISTANCE IN CHAINS JELLEY, AANRUD AND ROSEBERRY, 1969, GROUP NO.
 - #4 () = RECORD BEARING AND DISTANCE IN CHAINS VIRGIL L. STANGER, 1982, GROUP NO. 1052

PROCEDURE

A RANDOM TRAVERSE, USING A WILD T1000 THEODOLITE AND D11600 EDM, WAS USED TO CONNECT CONTROLLING CORNERS. BEARING AND DISTANCE WERE COMPUTED AND OFFSETS CALCULATED TO POINTS ON TRUE LINE FOR CARSONITE BOUNDARY MARKERS. ALL CORNER ACCESSORIES WERE MARKED AS OUTLINED IN THE "MANUAL OF INSTRUCTIONS FOR THE SURVEY OF PUBLIC LANDS OF THE U.S." 1973. BEARINGS TO ACCESSORIES WERE TAKEN WITH A STAFF COMPASS SET AT 20° EAST MAGNETIC DECLINATION. DISTANCES WERE MEASURED TO AN ALUMINUM NAIL IN BEARING TREE FACE. ALL ROADS ARE AT APPROXIMATE LOCATIONS UNLESS OTHERWISE INDICATED. FOR A DETAILED REPORT ON FOUND CORNERS SEE COUNTY RECORDS.

PURPOSE

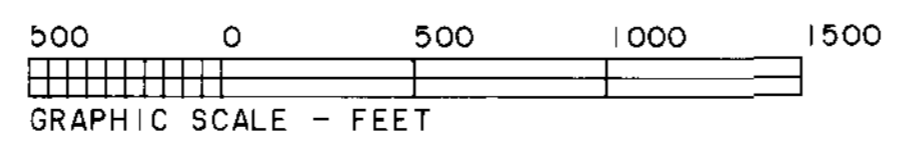
TO SEPARATE STATE FOREST LAND AND PRIVATE LANDS LOCATED IN SECTION 18, TOWNSHIP 33 SOUTH, RANGE 6 WEST, WILLAMETTE MERIDIAN.

BASIS OF BEARING

VIRGIL L. STANGER, 1982 DEPENDENT RESURVEY UNDER GROUP NO. 1052 (JOSEPHINE COUNTY, BLM BOOK #15 PAGE 480 AND DOUGLAS COUNTY SURVEYORS OFFICE RECORDS VOLUME 46 PAGE 17587) FROM THE ONE QUARTER CORNER OF SECTIONS 18 AND 19 TO THE SECTION CORNER OF SECTIONS 13, 18, 19 AND 24, TOWNSHIP 33 SOUTH, RANGE 6 AND 7 WEST, WILLAMETTE MERIDIAN.

SECTION CORNER FOUND
BLM P/C, 1963 (IN PLACE)
20" FIR (1855) N52°E 19 LKS (NOW 54" IN
PLACE, FACE EXPOSED NO SCRIBES VISIBLE, BTT)
10" B. OAK (1855) S74°E 75 LKS (NOW 31" IN
PLACE, TOP FACE OPEN AND ROTTED, BOTTOM FACE
CLOSED, BTT)
36" B. OAK (1963) N26°E 111 LKS (NOW 41"
DOUBLED TRUNKED IN PLACE, FACE CLOSED, BTT)
6" FIR (1963) S41°E 106 LKS (NOW 18" IN
PLACE, FACE CLOSED, BTT)
6" B. OAK (1963) S18°W 48 LKS (NOW 10" X 2'
HIGH STUMP IN PLACE, NO MARKS VISIBLE,
REMAINING PORTION OF TREE LYING DOWNHILL WITH
BTT ATTACHED)
6" MADRONE (1963) N20°W 46 1/2 LKS (NOW 10"
IN PLACE, FACE CLOSED BTT)
27" FIR S38°W 6.4' TO CLOSED FACE, AXE WORK
VISIBLE, NO RECORD
REWITNESSED
WP N50°W 3.80' TO BASE
WP S27°W 2.70' TO BASE

1/4 CORNER FOUND
BLM AP&C, 1982 (IN PLACE)
9" TANOAK (1982) N51 1/4°E 62 LKS (NOW
10" IN PLACE, SCRIBES VISIBLE, BTT)
9" FIR (1982) S30 3/4°W 5 LKS (NOW 12"
IN PLACE, FACE CLOSED, BTT)
REWITNESSED
WP N18°W 1.9' TO BASE
12" FIR S19°E 25.5' TO ALUMINUM NAIL IN
BT FACE SCRIBED (1/4S19BT) BTT



MAP FILE M136-74

MAP FILE M136-74