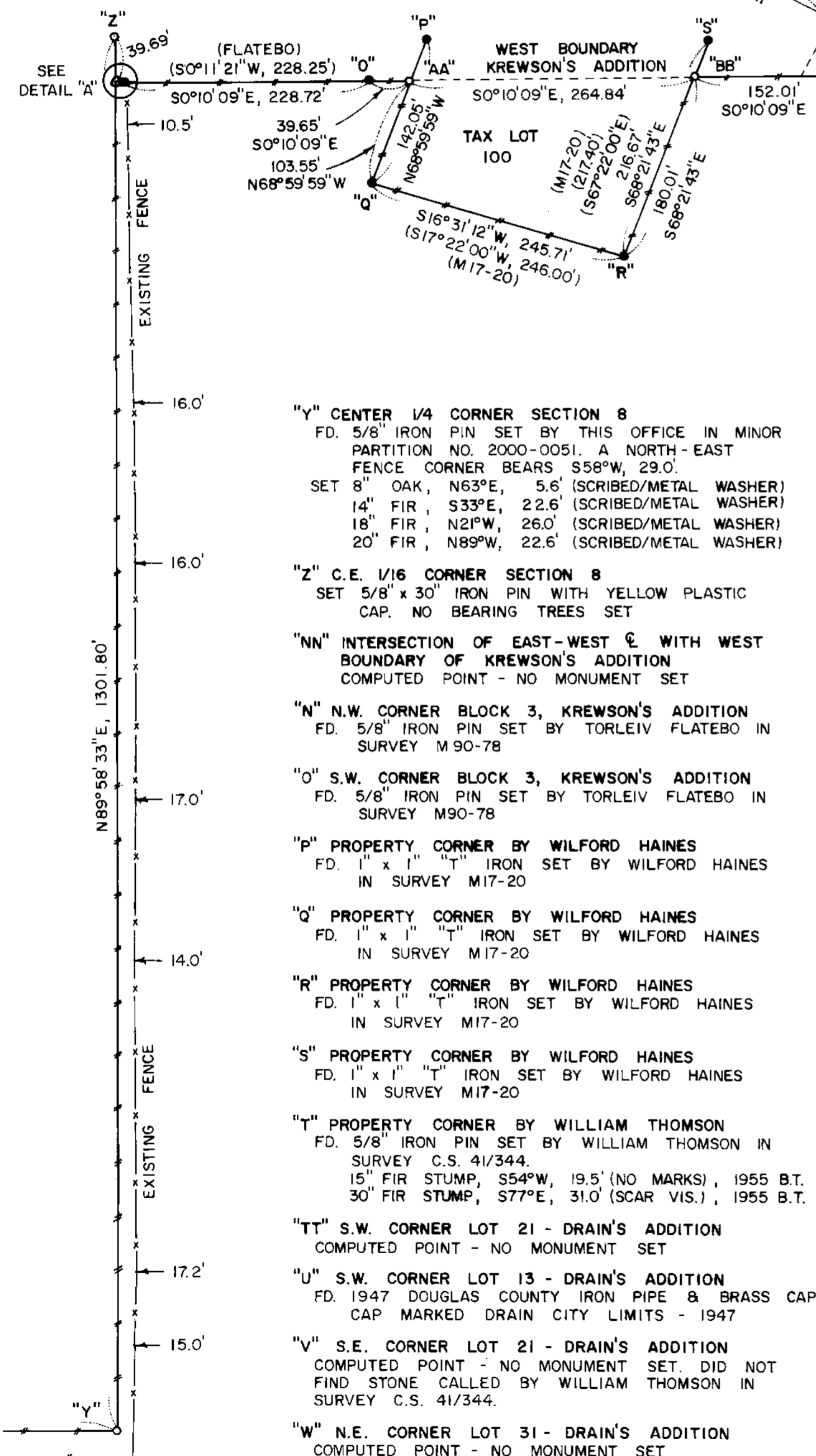


SCALE 1" = 100'
JANUARY 5, 2001

BOUNDARY SURVEY
IN
SECTION 8, T22S, R5W, W.M.
DOUGLAS COUNTY, OREGON
FOR
SENECA JONES TIMBER COMPANY
BY
ROBERTS SURVEYING INC.
P.O. BOX 7155
EUGENE, OREGON 97401
PHONE 345-1112

MAP FILE M 136-64B



LEGEND,

- MONUMENTS FOUND AND USED FOR CONTROL
- △ COMPUTED POINT - NO MONUMENT SET
- MONUMENTS SET - 5/8" x 30" IRON PINS WITH YELLOW PLASTIC CAPS. CAPS MARKED ROBERTS SURVEYING INC.
- LINE MARKED WITH RED PAINTED BLAZES, RED PLASTIC RIBBON AND GREEN METAL FENCE POSTS
- () DATA OF RECORD - KREWSON'S ADDITION TO DRAIN (VOLUME 2, PAGE 2). DRAIN'S ADDITION TO DRAIN (VOLUME 10, PAGE 181). SURVEY OF DRAIN'S ADDITION TO DRAIN BY G.G. STEWART ON JANUARY 23, 1922. COUNTY SURVEY C.S. 41/344 BY WILLIAM THOMSON IN FEBRUARY OF 1955. MAP FILE M90-78 BY TORLEIV FLATEBO IN OCTOBER OF 1985.

(CONTINUED)

MINOR PARTITION 2000-0051, WAS FOUND TO BE LOCATED AT THE POINT OF INTERSECTION OF THE NORTH-SOUTH AND EAST-WEST CENTERLINES OF SAID SECTION 8. THE C.E. 1/16 CORNER, MONUMENT "Z", WAS SET HALFWAY BETWEEN THE FOUND CENTER 1/4 CORNER AND THE FOUND EAST 1/4 CORNER. A CLOSED RANDOM PROPERTY LINE TRAVERSE, USING A WILD T-16 THEODOLITE AND A DI-4L E.D.M., WAS RUN ALONG ALL PROPERTY LINES TO BE BLAZED AND PAINTED. OFFSETS WERE COMPUTED FROM THIS RANDOM PROPERTY LINE TRAVERSE TO THE TRUE PROPERTY LINES. PROPERTY LINES WERE MARKED IN THE FIELD WITH RED PAINTED BLAZES AND RED PLASTIC RIBBON. PAGE 2 NARRATIVE, THE PURPOSE OF THIS SURVEY IS TO BLAZE AND POST THE FOLLOWING LINES: 1) THE WEST BOUNDARY OF KREWSON'S ADDITION TO DRAIN LYING IN GOVERNMENT LOT 1 (LINES "N-O-AA" AND "BB-CC") 2) THE NORTH, WEST AND SOUTH BOUNDARIES OF TAX LOT 100 (LINES "AA-Q", "Q-R" AND "R-BB"). ALSO MONUMENTS "AA", "BB", "CC" AND "DD" WERE SET IN THIS SURVEY. MONUMENTS "N", "O", "P", "Q", "R", "S", "T" AND "U" WERE FOUND IN THE FIELD AND USED AS CONTROL FOR THIS SURVEY. ALSO OREGON STATE HIGHWAY RIGHT-OF-WAY PINS AT STATIONS 19+63.42 P.T., 22+00.00 P.O.T., 24+00.00 P.O.T. AND 28+00.00 P.O.T., WERE FOUND IN THE FIELD AND USED AS CONTROL FOR THIS SURVEY. AN E.D.M. CONTROL TRAVERSE, USING A WILD T-16 THEODOLITE AND A DI-4L E.D.M., WAS RUN BETWEEN THE CONTROLLING CORNERS FOUND IN THE FIELD. THE S.W. CORNER OF LOT 21 (COMPUTED POINT "TT") WAS ESTABLISHED ON LINE "T-U" AT A DISTANCE OF 23.20 FEET (DISTANCE CALL FROM SURVEY C.S. 41/344) SOUTHWESTERLY OF FOUND MONUMENT "T". THE S.E. CORNER OF LOT 21 (COMPUTED POINT "V") WAS ESTABLISHED BY USING THE RECORD ANGLE OF 108°59'30" BETWEEN LINES "T-U" AND "TT-V" AND THE RECORD DISTANCE OF 200.00 FEET AS SHOWN ON SURVEY C.S. 41/344. THUS THE COMPUTED BEARING AND RECORD DISTANCE OF S89°16'18"E, 200.00 FEET FOR LINE "TT-V". THE N.E. CORNER OF LOT 31 (COMPUTED POINT "W") WAS ESTABLISHED BY DISTANCE-DISTANCE INTERSECTION AS FOLLOWS. COMPUTED POINT "W" WAS ESTABLISHED 550.00 FEET NORTHEASTERLY OF COMPUTED POINT "V" AND 94.00 FEET WEST OF THE CENTERLINE OF THE SOUTHERN PACIFIC RAILROAD TRACKS (DATA OF RECORD FROM G.G. STEWART'S SURVEY DATED JANUARY 23, 1922. THUS THE INVERSE BEARING AND DISTANCE OF N28°38'00"E, 550.00 FEET FOR LINE "V-W". THE N.W. CORNER OF LOT 31 (MONUMENT "DD") WAS SET 200.00 FEET WEST (DATA OF RECORD FROM G.G. STEWART'S SURVEY DATED JANUARY 23, 1922) OF COMPUTED POINT "W". THE S.W. CORNER OF BLOCK 1, LOT 4, KREWSON'S ADDITION (MONUMENT "CC") WAS SET AS FOLLOWS. LINE "N-O" WAS EXTENDED S0°10'09"E, 456.50 FEET (COMPUTED DISTANCE FROM FLATEBO SURVEY M90-78) TO POINT "CC". THUS THE INVERSE BEARING AND DISTANCE OF S35°20'02"W, 334.57 FEET FOR LINE "CC-DD". MONUMENT "BB" WAS SET BY INTERSECTION AS FOLLOWS. LINE "N-O" WAS EXTENDED S0°10'09"E TO THE POINT OF INTERSECTION WITH LINE "R-S". THUS THE INVERSE BEARINGS AND DISTANCES OF S0°10'09"E, 304.49 FEET FOR LINE "O-BB" AND S68°21'43"E, 180.01 FEET FOR LINE "R-BB". MONUMENT "AA" WAS SET BY INTERSECTION AS FOLLOWS. LINE "N-O" WAS EXTENDED S0°10'09"E TO THE POINT OF INTERSECTION WITH LINE "P-Q". THUS THE INVERSE BEARINGS AND DISTANCES OF S0°10'09"E, 39.65 FEET FOR LINE "O-AA" AND N68°59'59"W, 103.55 FEET FOR LINE "AA-Q". PROPERTY LINES WERE MARKED IN THE FIELD WITH RED PAINTED BLAZES AND RED PLASTIC RIBBON.

MAP FILE M 136-64B