

LONE ROCK TIMBER CO.

PO BOX 1127 ROSEBURG OREGON 97470 DATE: FEBRUARY 2001
 SECTION 23 & 24, TOWNSHIP 22 SOUTH, RANGE 6 WEST, W.M. DOUGLAS COUNTY, OREGON
 JUNIPER PROPERTIES TRACT: J 22-6-23 & 24 SCALE: 1" = 600'

FILED

Date: 3/7/2001 By: JP
 This survey consists of:
 Map: M136-56
 Narrative:
 Corner Ppt: _____

DOUGLAS COUNTY
 SURVEYOR

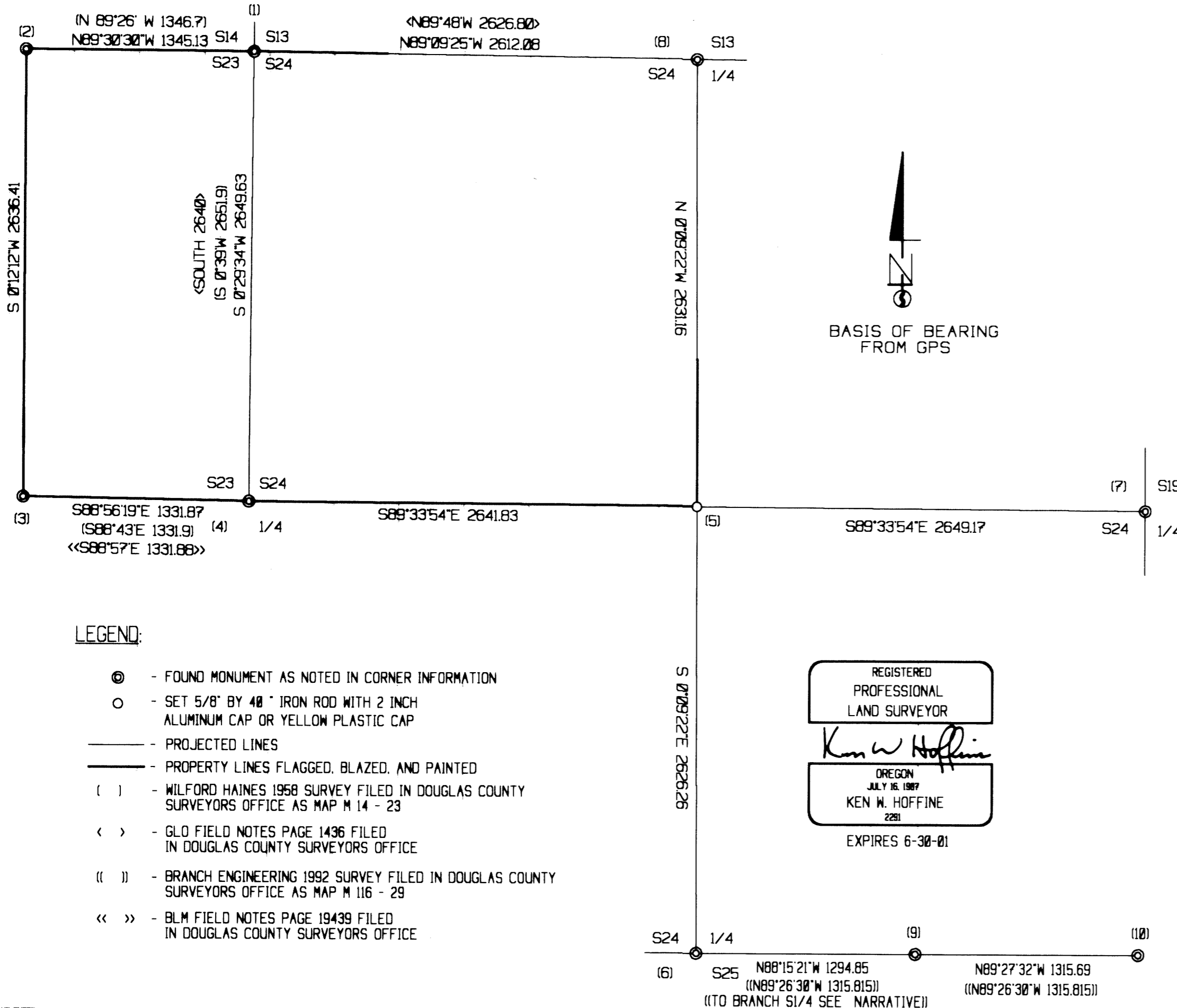
NARRATIVE

THIS SURVEY WAS CONDUCTED TO ESTABLISH PROPERTY CORNERS AND PROPERTY LINES FOR TIMBER CUTTING PURPOSES. WE INITIATED THIS SURVEY AT THE NORTHWEST CORNER OF SECTION 24 A COUNTY BCIP SET FROM ORIGINAL EVIDENCE RUNNING A RANDOM SURVEY LINE NEARLY AROUND THE JUNIPER PROPERTIES TRACT CLOSING ON GPS CONTROL POINTS WE ESTABLISHED. OUR RANDOM TRAVERSE TIED IN THE NORTH 1/4 OF SECTION 24. A COUNTY BCIP SET FROM PERPETUATED ORIGINAL EVIDENCE, AND THE WEST 1/4 OF SECTION 24 A BLM BCIP SET FROM PERPETUATED ORIGINAL EVIDENCE. WE ALSO MADE A RANDOM CLOSED LOOP TRAVERSE TO THE EAST AND SOUTH 1/4 CORNERS OF SECTION 24. THE EAST 1/4 OF SECTION 24 IS A SHANER BCIP SET FROM ORIGINAL EVIDENCE. THE SOUTH 1/4 IS A HAINES T-BAR SET FROM AN ORIGINAL BT STUMP WITH SCRIBE MARKS AT NEAR RECORD DISTANCE AND BEARING. A BRANCH ENG. REBAR FOR THE NORTH 1/4 OF SECTION 25 SET BY PROPORTION BEARS S38 1/3°W, 34.5 FEET. WE ALSO RAN AN OPEN TRAVERSE TO THE EAST 1/16 BETWEEN SECTIONS 24 AND 25 AND THE SOUTHEAST CORNER OF SECTION 24 (THESE CORNERS ARE INTERVISIBLE) TO PROVIDE OPPORTUNITY FOR EASIER SURVEY, RECOMPUTATION AND RESETTING OF CORNERS IN SECTION 25. WE SET THE CENTER 1/4 OF SECTION 24 AT OUR COMPUTED POSITION AND MARKED PROPERTY LINES AS SHOWN HEREON FROM OFFSETS OF OUR RANDOM TRAVERSE WHERE APPLICABLE. THERE ARE OLD POOR CONDITION MEANDERING FENCE LINES ON THE NORTH AND WEST LINE OF SECTION 24 AND THE SOUTH LINE OF JUNIPER TRACT IN SECTIONS 23 AND 24. WE VERBALLY AGREED WITH LANDOWNER REPRESENTATIVE, JB WHIPPLE, TO MARK TRUE DEED LINES AS PROPERTY LINES. I WAS ASSISTED WITH THIS SURVEY BY GARY ANGIOLET, MARK DVORSCAK, IGNACIO ROMAN USING A NIKON 450 DTM TOTAL STATION, TRIMBLE 4400 SI BASE GPS RECEIVER AND TWO TRIMBLE PRO XR ROVER RECEIVERS.

CORNER INFORMATION

THE FOLLOWING IS A RECORD OF CORNERS SET OR FOUND DURING THE COURSE OF THIS SURVEY.

- 1) THE NORTHEAST SECTION CORNER OF SECTION 23
 FOUND 1961 DOUGLAS COUNTY CAP ON IRON PIPE BENT SEVERLY TO SOUTHWEST.
 -- 22' DOUGLAS FIR BEARS N2 3/4°E, 14.5 FEET, NO RECORD, TAG, NO FACE
 -- 20' DOUGLAS FIR BEARS N42 3/4°E, 46.8 FEET (RECORD N38°E, 46.86 FEET), WELL HEALED FACE AND TAG
 -- 22' DOUGLAS FIR BEARS S7 3/4°E, 60.0 FEET (RECORD S7°E, 60.72 FEET) WELL HEALED FACE AND TAG
 -- 21' DOUGLAS FIR BEARS S10°W, 76.8 FEET (RECORD S10°W, 76.56 FEET) WELL HEALED FACE AND TAG
 CORNER LIES ON RIDGETOP 15.0 FEET NORTH OF CENTERLINE OF NEW DIRT ROAD. AN OLD FENCE CORNER BEARS N80°W, 5.5 FEET. FENCE RUNS NORTH AND WEST.
- 2) THE EAST 1/16 CORNER BETWEEN SECTION 23 AND SECTION 14
 FOUND 3/4" "T" IRON BENT NORTHWARD.
 -- ROTTEN DOUGLAS FIR STUMP OF INDETERMINATE SIZE BEARS N35 1/2°E, 10.7 FEET (RECORD N34°E, 11.0 FEET)
 -- ROTTEN DOUGLAS FIR STUMP OF INDETERMINATE SIZE BEARS S1°E, 3.3 FEET (RECORD S2°W, 3.0 FEET)
 -- 8' DOUGLAS FIR BEARS S79 3/4°W, 28.7 FEET, WE TAG TREE AND SCRIBE B.T.
 -- 6' DOUGLAS FIR BEARS S16 1/4°E, 22.8 FEET, WE TAG TREE AND SCRIBE B.T.
 -- 7' DOUGLAS FIR BEARS N10°E, 24.5 FEET, WE TAG TREE AND SCRIBE S14 B.T.
 CORNER LIES ON GENTLE NORTH SLOPE IN YOUNG REPROD. A VERY OLD FENCE BEARS EAST APPROXIMATELY 60 FEET. FENCE IS DOWN, BUT RUNS NORTH AND SOUTH.
- 3) THE CENTEREAST 1/16 CORNER OF SECTION 23
 FOUND 1993 BLM BCIP IN GOOD CONDITION.
 -- 9' DOUGLAS FIR BEARS S33 1/2°E, 83.6 FEET (RECORD S29°E, 83.49 FEET) HEALED FACE AND TAG
 -- 22' DOUGLAS FIR BEARS N74 3/4°E, 145.4 FEET (RECORD N74 1/2°E, 145.2 FEET) WELL HEALED FACE, WE TAG TREE
 -- ROTTEN DOUGLAS FIR STUMP FOUND AT APPROXIMATE RECORD BEARING AND DISTANCE BY COMPASS AND PACING
 (RECORD N89 1/2°E, 105.6 FEET)
 CORNER LIES IN GRASSY OPENING ON GENTLY SOUTHWEST SLOPE. AN OLD FENCE CORNER BEARS N25°E, 30.5 FEET. FENCE RUNS WEST, EAST AND NORTH.
- 4) THE 1/4 CORNER BETWEEN SECTIONS 23 AND 24
 FOUND 1993 BLM BCIP IN GOOD CONDITION.
 -- 25' DOUGLAS FIR BEARS S45°W, 96.2 FEET (RECORD S44°W, 96.36 FEET) SOME VISIBLE BARK SCRIBING AND TAG
 -- 26' DOUGLAS FIR BEARS N19°E, 21.7 FEET (RECORD N19°E, 21.78 FEET) WELL HEALED FACE AND TAG
 CORNER LIES ON GENTLE WEST SLOPE IN OLD FENCE LINE. FENCE RUNS EAST AND WEST. A NEW DIRT ROAD BEARS NORTH APPROXIMATELY 60 FEET.
- 5) THE CENTER 1/4 CORNER OF SECTION 24
 SET 5/8" X 40" IRON ROD WITH ALUMINUM CAP MARKED LRT PLS 2291.
 -- 10' DOUGLAS FIR BEARS N85 3/4°W, 43.5 FEET, WE TAG TREE AND SCRIBE 1/4 S24 B.T.
 -- 27' DOUGLAS FIR BEARS S3°E, 56.3 FEET, WE TAG TREE AND SCRIBE 1/4 S24 B.T.
 -- 23' DOUGLAS FIR BEARS S16°W, 44.3 FEET, WE TAG TREE AND SCRIBE 1/4 S24 B.T.
 -- 20' DOUGLAS FIR BEARS N66 1/4°W, 22.7 FEET, WE TAG TREE AND SCRIBE 1/4 S24 B.T.
 CORNER LIES ON EAST SLOPE.
- 6) THE 1/4 CORNER BETWEEN SECTIONS 24 AND 25
 FOUND HAINES "T" IRON BENT TO SOUTHEAST.
 -- 6' DOUGLAS FIR BEARS S41 1/2°W, 7.6 FEET, FRESH SCRIBING VISIBLE AND TAG
 -- 23' DOUGLAS FIR BEARS N65°W, 56.9 FEET, FRESH SCRIBING VISIBLE AND TAG
 -- 48' DOUGLAS FIR STUMP BEARS S4 1/4°W, 87.1 FEET (RECORD S5°W, 90.42 FEET) SOME SCRIBING VISIBLE IN CHOPPED OUT FACE
 -- 25' DOUGLAS FIR BEARS N57°E, 24.9 FEET, FRESH SCRIBING VISIBLE AND TAG
 5/8" IRON ROD WITH BRANCH ENGINEERING PLS 1138 YELLOW PLASTIC CAP BEARS S38 1/2°W, 34.5 FEET FROM WHICH ARE THE FOLLOWING B.T.'S:
 -- 14" WHITE FIR BEARS S16 3/4°W, 30.9 FEET (RECORD S15°W, 31.2 FEET) PARTIAL SCRIBING VISIBLE, NO TAG
 -- 13' DOUGLAS FIR BEARS S10°W, 45.0 FEET (RECORD S12°W, 45.3 FEET) WELL HEALED FACE, NO TAG
 CORNER LIES ON NORTHEAST SLOPE IN SECOND GROWTH CONIFER.
- 7) THE 1/4 CORNER BETWEEN T22S, R6W, SECTION 24 AND T22S, R5W, SECTION 19
 FOUND 1981 PLS 430 ALUMINUM CAP IN GOOD CONDITION.
 -- 25' OAK BEARS S79 3/4°E, 26.0 FEET (RECORD S79°E, 26.3 FEET) WELL HEALED FACE AND TAG AND HAINES WASHER
 -- 26' OAK BEARS S42 3/4°W, 5.6 FEET, NO RECORD, OPENED AND PARTIALLY REHEALED FACE AND TAG
 -- 27' OAK BEARS S71 1/2°W, 15.8 FEET (RECORD S74°W, 15.2 FEET) CUT OUT FACE AND HAINES WASHER AND TAG
 -- 12' DOUGLAS FIR BEARS N66 3/4°W, 26.1 FEET (RECORD N67°W, 26.5 FEET) WELL HEALED FACE AND TAG
 CORNER LIES ON GENTLE WEST SLOPE IN MIXED CONIFER AND HARDWOOD TIMBER.
- 8) THE 1/4 CORNER BETWEEN SECTIONS 24 AND 13
 FOUND 1978 DOUGLAS COUNTY CAP IN GOOD CONDITION WITH HAINES "T" IRON ALONG SIDE.
 -- 20' DOUGLAS FIR BEARS N36°E, 21.9 FEET (RECORD N36 1/2°E, 22.2 FEET) WELL HEALED FACE AND TAG
 -- 36' DOUGLAS FIR STUMP BEARS S16°E, 145.0 FEET (RECORD S16°E, 145.9 FEET) WELL HEALED FACE AND TAG
 CORNER LIES ON NORTHWEST SLOPE WITH YOUNG REPROD NORTHWEST AND SOUTHEAST. SECOND GROWTH CONIFER NORTHEAST AND SOUTHWEST. AN OLD FENCE CORNER BEARS N40°E APPROXIMATELY 25 FEET. FENCE RUNS NORTH AND EAST.
- 9) FOUND BRANCH IRON ROD WITH PLASTIC CAP
 -- 11' FIR BEARS S57°W 82.2 FEET (RECORD S58°W 81.6 FEET) HEALED FACE AND TAG
 -- 13' FIR BEARS N57°W 100.6 FEET (RECORD N58°W 100.6 FEET) HEALED FACE AND TAG
 LOCATION FOR THIELS EAST 1/16 CORNER BEARS N 3°E 12.0 FEET FROM WHICH
 -- 36' CEDAR STUMP BEARS N24°W 2.6 FEET FROM CHOPPED OUT FACE VISIBLE SCRIBING
 -- 12' OAK DOWN WITH VISIBLE SCRIBING BEARS S20°E 7.3 FEET FROM FACE OF ROOT HOLE
 CORNER IS LOCATED ON A FLAT SOUTH BEARING SPUR RIDGE.
- 10) THE SOUTHEAST SECTION CORNER FOR SECTION 24.
 FOUND 1959 COUNTY BRASS CAP
 -- 36' DEAD OAK BEARS N87 1/2°E, 48.5 FEET (RECORD N89°E, 47.5 FEET) HEALED FACE AND TAG
 -- 21' DEAD OAK BEARS S77 3/4°E, 32.7 FEET (RECORD S74°E, 32.8 FEET) HEALED FACE
 -- 20' DOUGLAS FIR BEARS S59 1/2°E, 55.4 FEET (RECORD S57°E, 55.7 FEET) HEALED FACE AND TAG
 -- 12' OAK BEARS N37 3/4°W, 9.1 FEET (RECORD N37°W, 8.5 FEET) HEALED FACE AND TAG
 -- 21' OAK BEARS S68°W, 63.4 FEET (RECORD S68°W, 66.0 FEET) HEALED FACE AND TAG
 CORNER LIES ON SOUTH FACING SLOPE APPROX. 35 FEET NORTH OF SMALL DRAW AND 1 FOOT NORTH OF NORTH - SOUTH FENCE LINE



MAP FILE M136-56

MAP FILE M136-56

**COUNTY SURVEYORS FILE DATA
 DO NOT REMOVE FROM OFFICE**