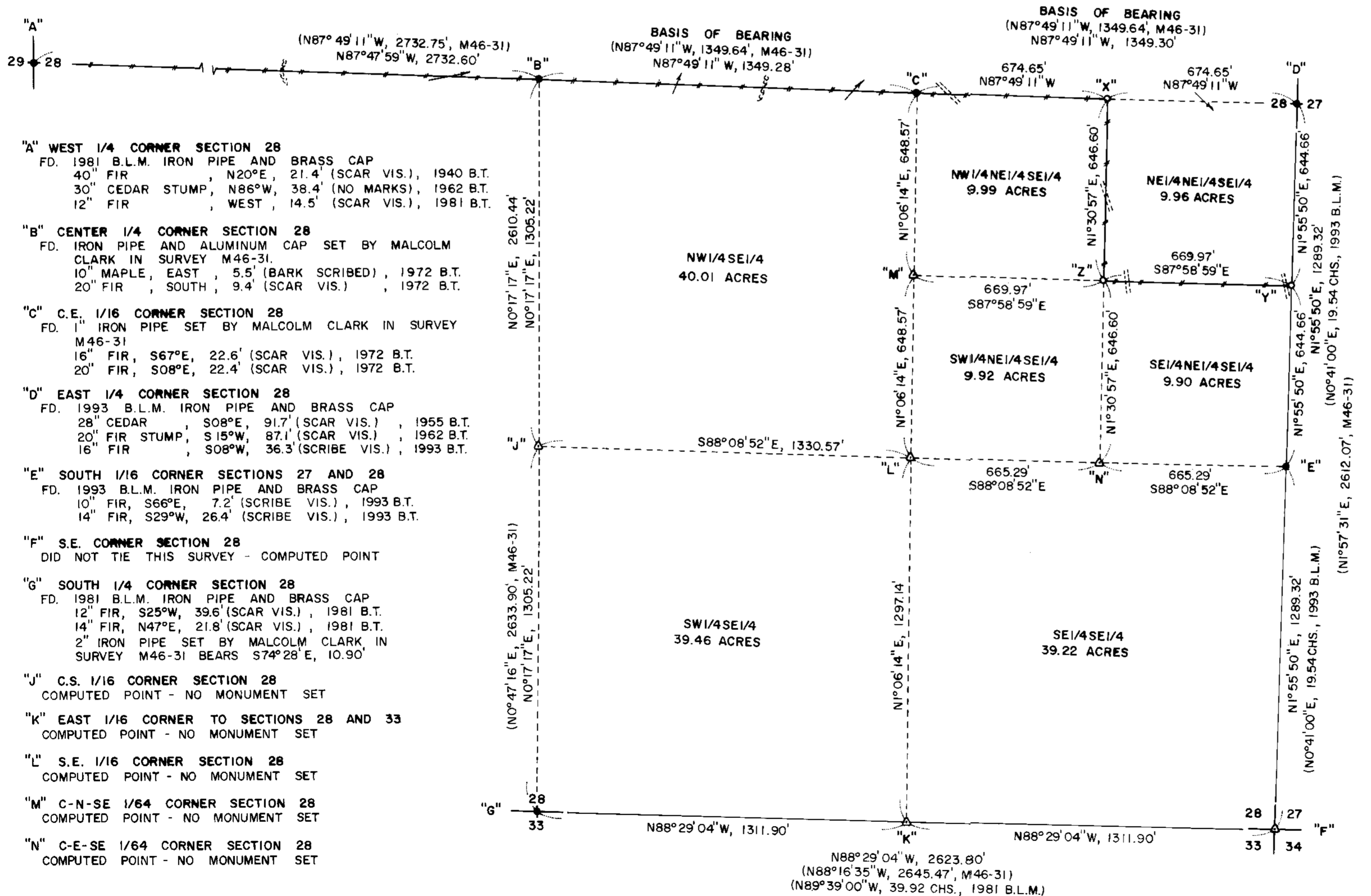


NARRATIVE, THE PURPOSE OF THIS SURVEY IS TO BLAZE AND PAINT THE FOLLOWING PROPERTY LINES; 1) THE WEST 1/2 OF THE EAST-WEST CENTERLINE OF SECTION 28 (LINE A-B) 2) THE NORTH LINE OF THE NW1/4SE1/4 OF SECTION 28 (LINE B-C) 3) THE NORTH LINE OF THE NW1/4NE1/4SE1/4 OF SECTION 28 (LINE C-X) AND 4) THE WEST AND SOUTH LINES OF THE NE1/4NE1/4SE1/4 OF SECTION 28 (LINES X-Z AND Z-Y). ALSO THE NORTHWEST, SOUTHWEST AND SOUTHEAST CORNERS OF THE NE1/4NE1/4SE1/4 WERE SET IN THIS SURVEY. THE WEST 1/4 CORNER (MONUMENT "A"), THE CENTER 1/4 CORNER (MONUMENT "B"), THE C.E. 1/16 CORNER (MONUMENT "C"), THE EAST 1/4 CORNER (MONUMENT "D"), THE SOUTH 1/16 CORNER (MONUMENT "E") AND THE SOUTH 1/4 CORNER (MONUMENT "G") WERE FOUND IN THE FIELD AND USED AS CONTROL FOR THIS SURVEY. A CLOSED RANDOM CONTROL TRAVERSE, USING A WILD T-16 THEODOLITE AND A DI-4L E.D.M., WAS RUN BETWEEN THE CONTROLLING CORNERS FOUND IN THE FIELD. THE S.E. SECTION CORNER WAS ESTABLISHED BY EXTENDING LINE "D-E", S1°55'50"W, 1289.32 FEET TO COMPUTED POINT "F". THE C.S. 1/16 CORNER, COMPUTED POINT "J", WAS ESTABLISHED HALFWAY BETWEEN THE FOUND CENTER 1/4 CORNER AND THE FOUND SOUTH 1/4 CORNER. THE EAST 1/16 CORNER TO SECTIONS 28 AND 33, COMPUTED POINT "K", WAS ESTABLISHED HALFWAY BETWEEN THE COMPUTED S.E. SECTION CORNER AND THE FOUND SOUTH 1/4 CORNER. THE S.E. 1/16 CORNER, COMPUTED POINT "L", WAS ESTABLISHED AT THE POINT OF INTERSECTION OF THE NORTH-SOUTH AND EAST-WEST CENTERLINES OF THE SE1/4 OF SAID SECTION 28. THE CENTER NORTH-SOUTHEAST 1/64 CORNER, COMPUTED POINT "M", WAS ESTABLISHED HALFWAY BETWEEN THE FOUND CE1/16 CORNER AND THE COMPUTED SE1/16 CORNER. THE CENTER EAST-SOUTHEAST 1/64 CORNER, COMPUTED POINT "N", WAS ESTABLISHED HALFWAY BETWEEN THE FOUND SOUTH 1/16 CORNER AND THE COMPUTED SE1/16 CORNER. THE CENTER EAST-SOUTHEAST 1/64 CORNER, COMPUTED POINT "O", WAS ESTABLISHED HALFWAY BETWEEN THE FOUND SOUTH 1/16 CORNER AND THE COMPUTED SE1/16 CORNER. THE CENTER EAST-SOUTHEAST 1/64 CORNER, MONUMENT "X", WAS SET HALFWAY BETWEEN THE FOUND CE1/16 CORNER AND THE FOUND EAST 1/4 CORNER. THE NORTH-SOUTH 1/64 CORNER, MONUMENT "Y", WAS SET HALFWAY BETWEEN THE FOUND EAST 1/4 CORNER AND THE FOUND SOUTH 1/16 CORNER. THE NORTHEAST-SOUTHEAST 1/64 CORNER, MONUMENT "Z", WAS SET AT THE POINT OF INTERSECTION OF THE NORTH-SOUTH AND EAST-WEST CENTERLINES OF THE NE1/4SE1/4 OF SAID SECTION 28. A CLOSED RANDOM PROPERTY LINE TRAVERSE, USING A WILD T-16 THEODOLITE AND A DI-4L E.D.M., WAS RUN ALONG ALL PROPERTY LINES TO BE BLAZED AND PAINTED. OFFSETS WERE COMPUTED FROM THIS RANDOM PROPERTY LINE TRAVERSE TO THE TRUE PROPERTY LINES. PROPERTY LINES WERE MARKED IN THE FIELD WITH RED PAINTED BLAZES AND RED PLASTIC RIBBON

BOUNDARY SURVEY
FOR
SENECA JONES TIMBER COMPANY
IN
SECTION 28, T21S, R5W, W.M.
DOUGLAS COUNTY, OREGON
BY
ROBERTS SURVEYING INC.
P.O. BOX 7155
EUGENE, OREGON 97401
PHONE 345-1112

MAP FILE M136-42



REGISTERED PROFESSIONAL AND SURVEYOR
L. D. Roberts
EXPIRES 12-31-2002

SCALE 1" = 300'
JANUARY 19, 2001

- LEGEND
- MONUMENTS FOUND AND USED FOR CONTROL
 - △ COMPUTED POINT - NO MONUMENT SET
 - MONUMENTS SET - 5/8" x 30" IRON PINS WITH YELLOW PLASTIC CAPS. CAPS MARKED ROBERTS SURVEYING INC.
 - LINES MARKED WITH RED PAINTED BLAZES AND RED PLASTIC RIBBON
 - () DATA OF RECORD - MAP FILE M46-31 BY MALCOLM CLARK IN MARCH AND AUGUST OF 1972. 1981 B.L.M. SURVEY BY WAYNE ROGERS AND 1993 B.L.M. SURVEY BY BRYAN SIEBOLD.
 - BASIS OF BEARING, EAST-WEST OF SECTION 28 (LINE B-C-D) FROM MALCOLM CLARK SURVEY M46-31
 - DISTANCES TO BEARING TREES ARE CENTER MEASURE
 - ALL NEW BEARING TREES ARE SCRIBED AND HAVE A METAL WASHER STAMPED P.L.S. 1039 NAILED TO LOWER BLAZE. LOWER BLAZES ARE PAINTED RED.
 - ==== DIRT OR GRAVEL ROAD
 - RIDGE
 - DRAW OR CREEK

- "X" CE-E 1/64 CORNER SECTION 28
SET 5/8" x 30" IRON PIN WITH YELLOW PLASTIC CAP
8" ALDER, S37°E, 6.8' (BARK SCRIBED/METAL WASHER)
12" FIR, S80°W, 33.5' (SCRIBED/METAL WASHER)
- "Y" N-S 1/64 CORNER SECTION 28
SET 5/8" x 30" IRON PIN WITH YELLOW PLASTIC CAP
12" ALDER, N22°E, 23.6' (SCRIBED/METAL WASHER)
14" CEDAR, N68°W, 59.9' (SCRIBED/METAL WASHER)
- "Z" NE-SE 1/64 CORNER SECTION 28
SET 5/8" x 30" IRON PIN WITH YELLOW PLASTIC CAP
8" FIR, S49°W, 18.9' (SCRIBED/METAL WASHER)
36" FIR, N79°E, 26.2' (SCRIBED/METAL WASHER)

MAP FILE M136-42